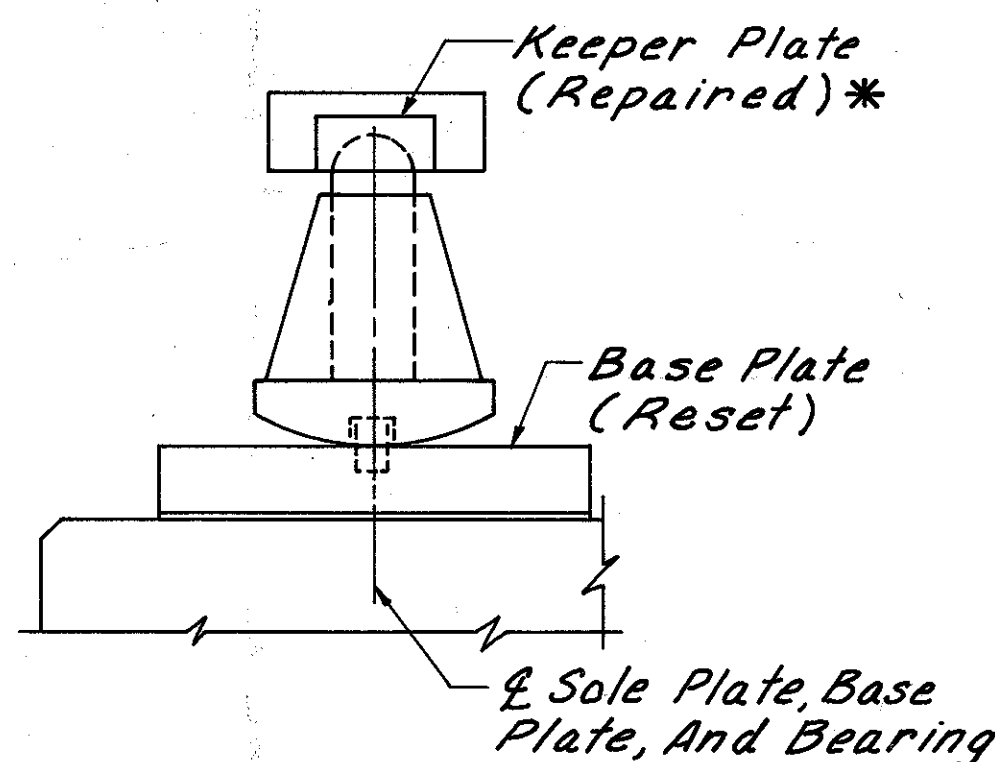


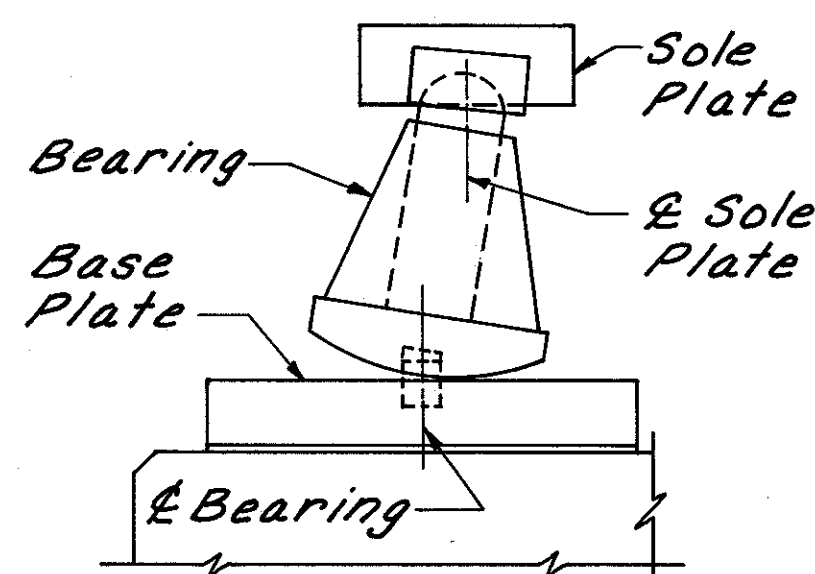
**PROCEDURE FOR RESETTING ROCKERS \***

1. Raise The Entire Superstructure At The Abutment Until There Is No Contact Between The Sole Plate And The Bearing (1/4" Max).
2. Reset The Rocker And Base Plate In Final Position By Centering The Base Plate Under The Sole Plate Both In The Longitudinal And Transverse Direction (At 60°F).
3. Reweld Keeper Plate To Sole Plate As Required With A 5/16" Fillet Weld.
4. Lower Superstructure.

This Work Shall Be Paid For Under Item Special- Reset Bearings. All Expansion Bearings On The Abutments Shall Be Reset Per The Procedure Described Above.



RESET SIDE ELEVATION



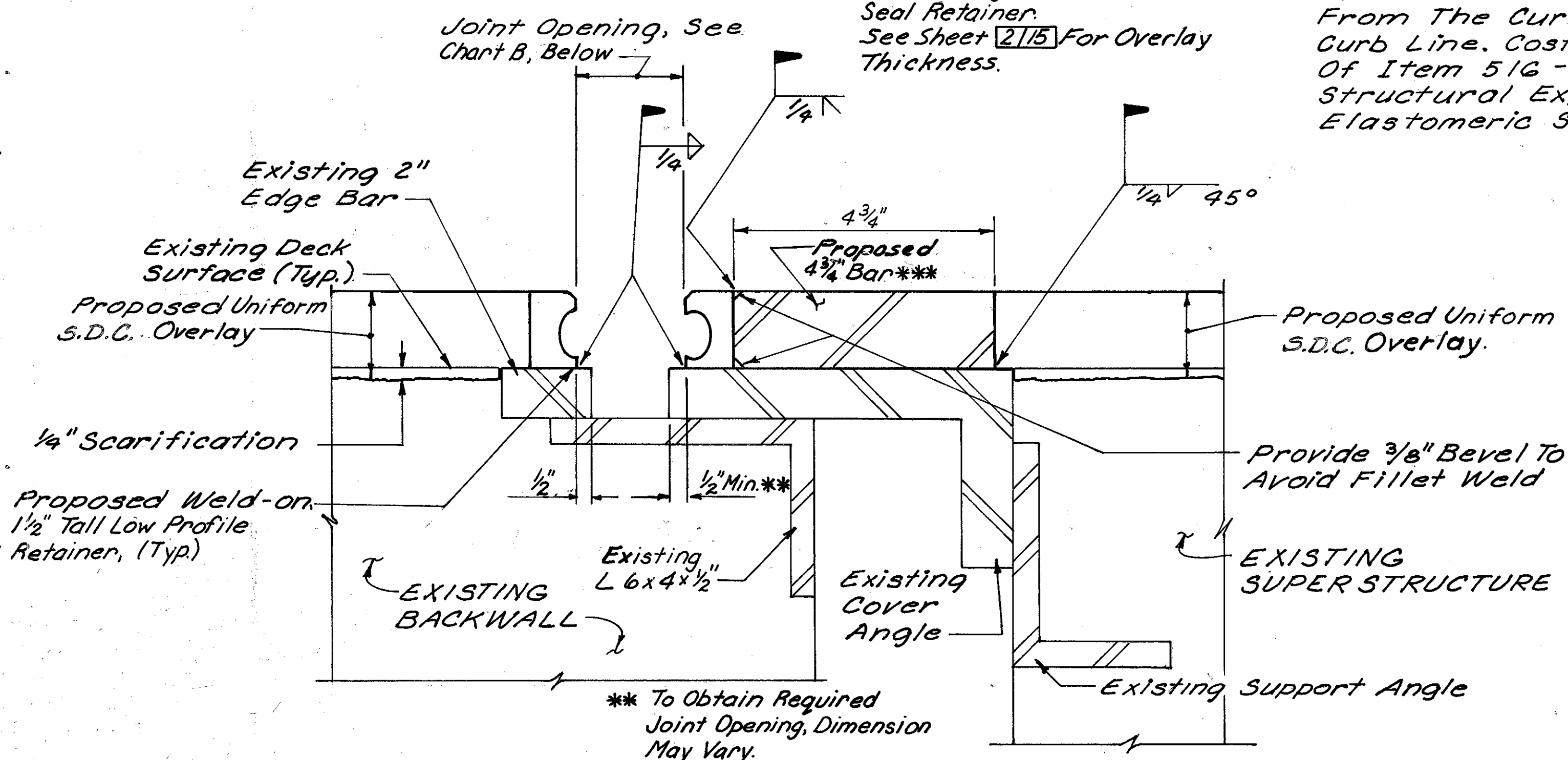
EXISTING SIDE ELEVATION

\* If Necessary As Determined By The Engineer.

**ROCKER RESET DETAILS**

\*\*\* Thickness Of Bar Shall Be The Height Of The Strip Seal Retainer. See Sheet 215 For Overlay Thickness.

Note: Pour "Item Special - Poured Polyurethane Joint Seal" In The Strip Seal And Extrusion From The Curb Line To One Foot From The Curb Line. Cost To Be Included In The Cost Of Item 516 - Vertical Extension Of Structural Expansion Joints, Including Elastomeric Strip Seals.



**ITEM 516 - VERTICAL EXTENSION OF STRUCTURAL EXPANSION JOINTS**

(INCLUDING ELASTOMERIC STRIP SEALS, AS PER PLAN)

STRUCTURE NO.	JOINT OPENING	SEAL SIZE	JOINT LENGTH	SKEW
LAK-44-0510	See Chart B This Sheet	4"	28'-0"	6°-32'-30"
F		4"	28'-0"	
R				

CHART A

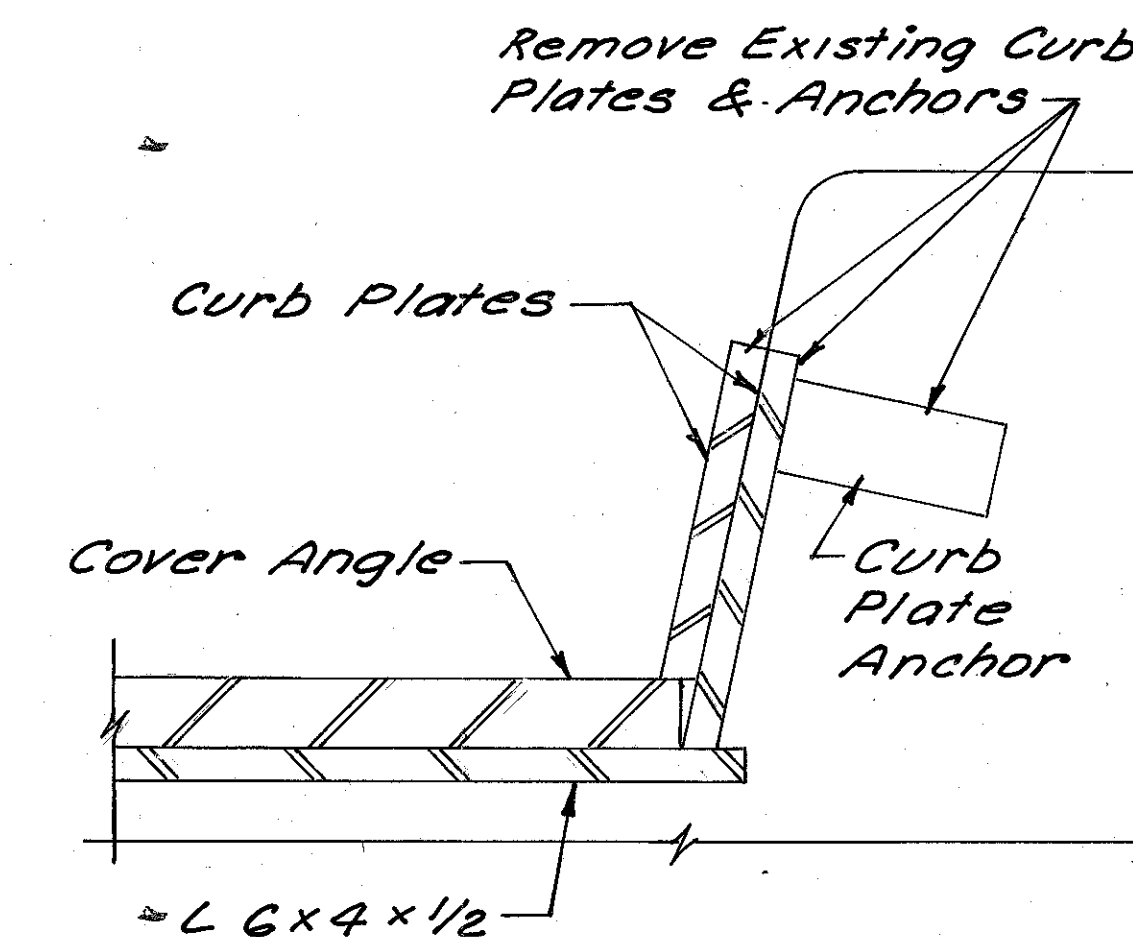
EXPANSION JOINT OPENING							
TEMPERATURE °F	30°	40°	50°	60°	70°	80°	90°
JOINT OPENING	3"	2 15/16"	2 27/32"	2 3/4"	2 21/32"	2 9/16"	2 1/2"

CHART B

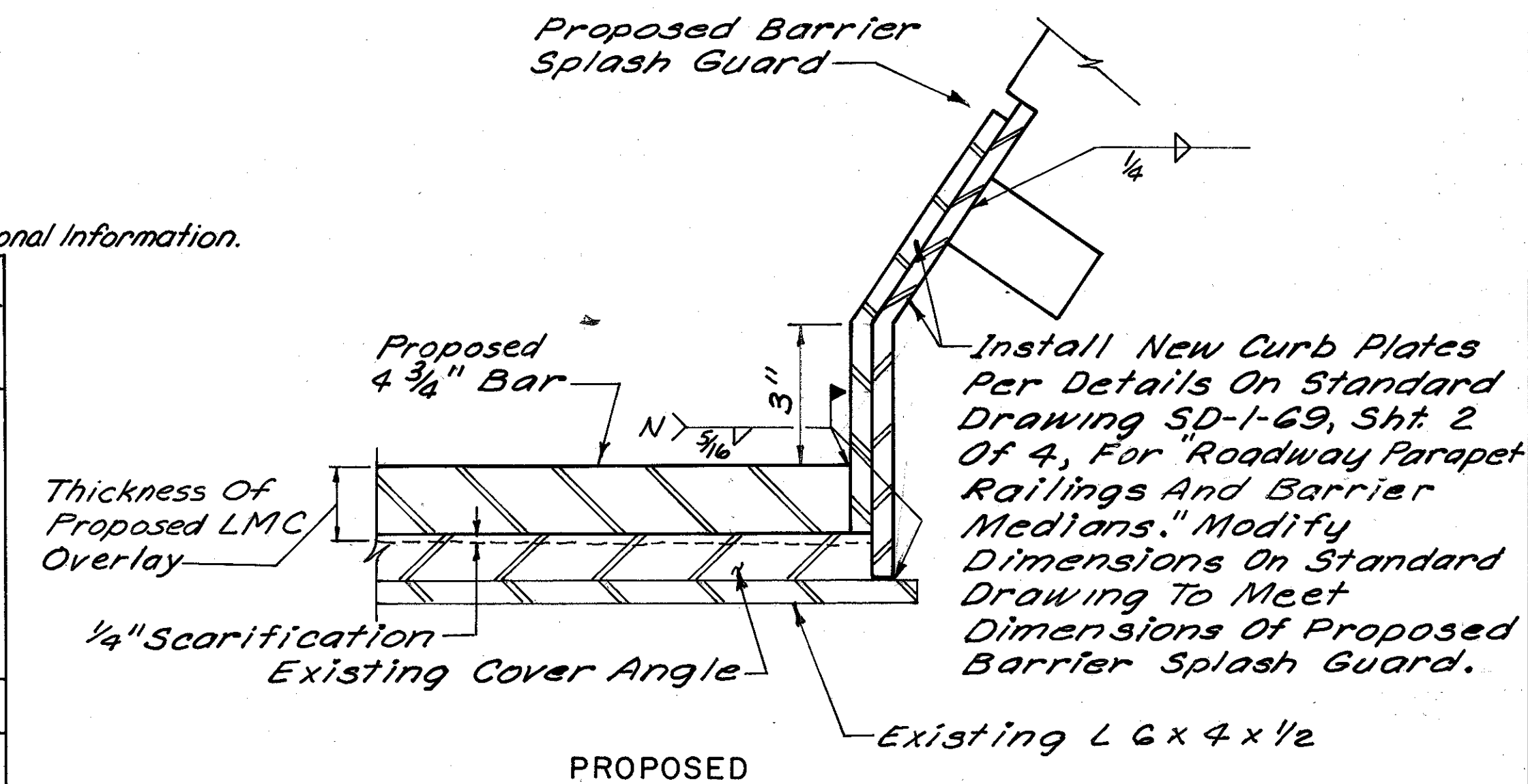
See Standard Drawing EXJ-4-87 For Additional Information.

SEAL MOVEMENT RATING	MANUFACTURER & DESIGNATION		
	D. S. BROWN	STRUCTURAL ACCESSORIES	WATSON BOWMAN & ACME
4"	SS-400	40 SEQ	S-400
WELD-ON EXTRUSION	TYPE SSE	TYPE SA	TYPE E

Note: A Mfg. Rep. Shall Be Present On Site Until Such Time As He And The Engineer Are Sure That The Contractor Is Qualified In All Aspects Of Joint Sealing.



EXISTING



PROPOSED

**CURB PLATE MODIFICATION AT EXPANSION JOINT**

Burgess & Niple, Limited  
Engineers and Architects



10 / 15

MISCELLANEOUS DETAILS

BRIDGE NO. LAK-44-0510  
JACKSON STREET OVER S.R.44

DESIGNED	DRAWN	TRACED	CHECKED	REVIEWED DATE	REVISED
PJOD	RLH		WAC	WAC 12/89	