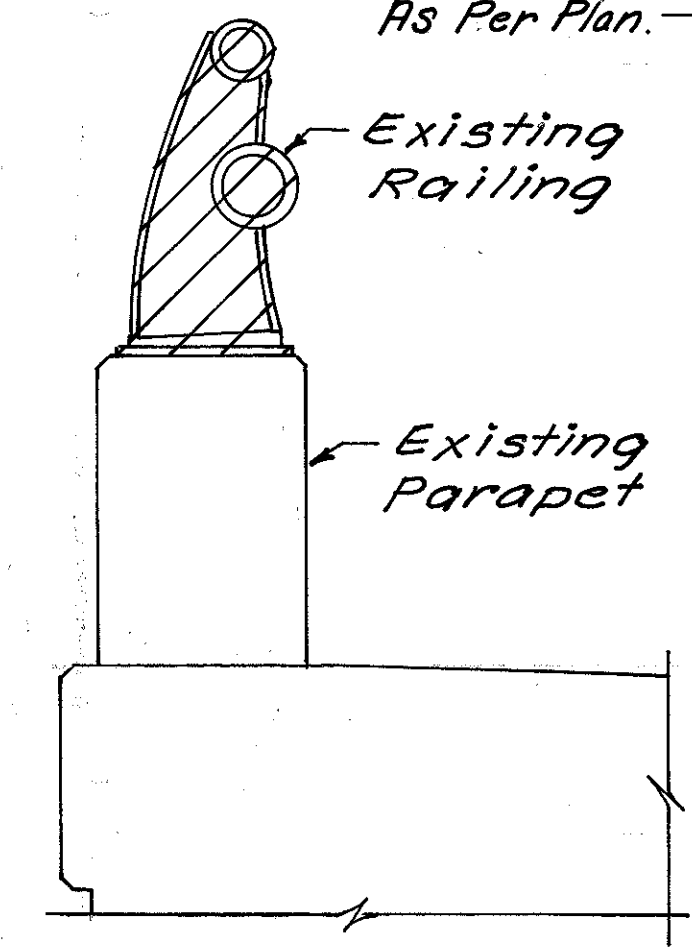


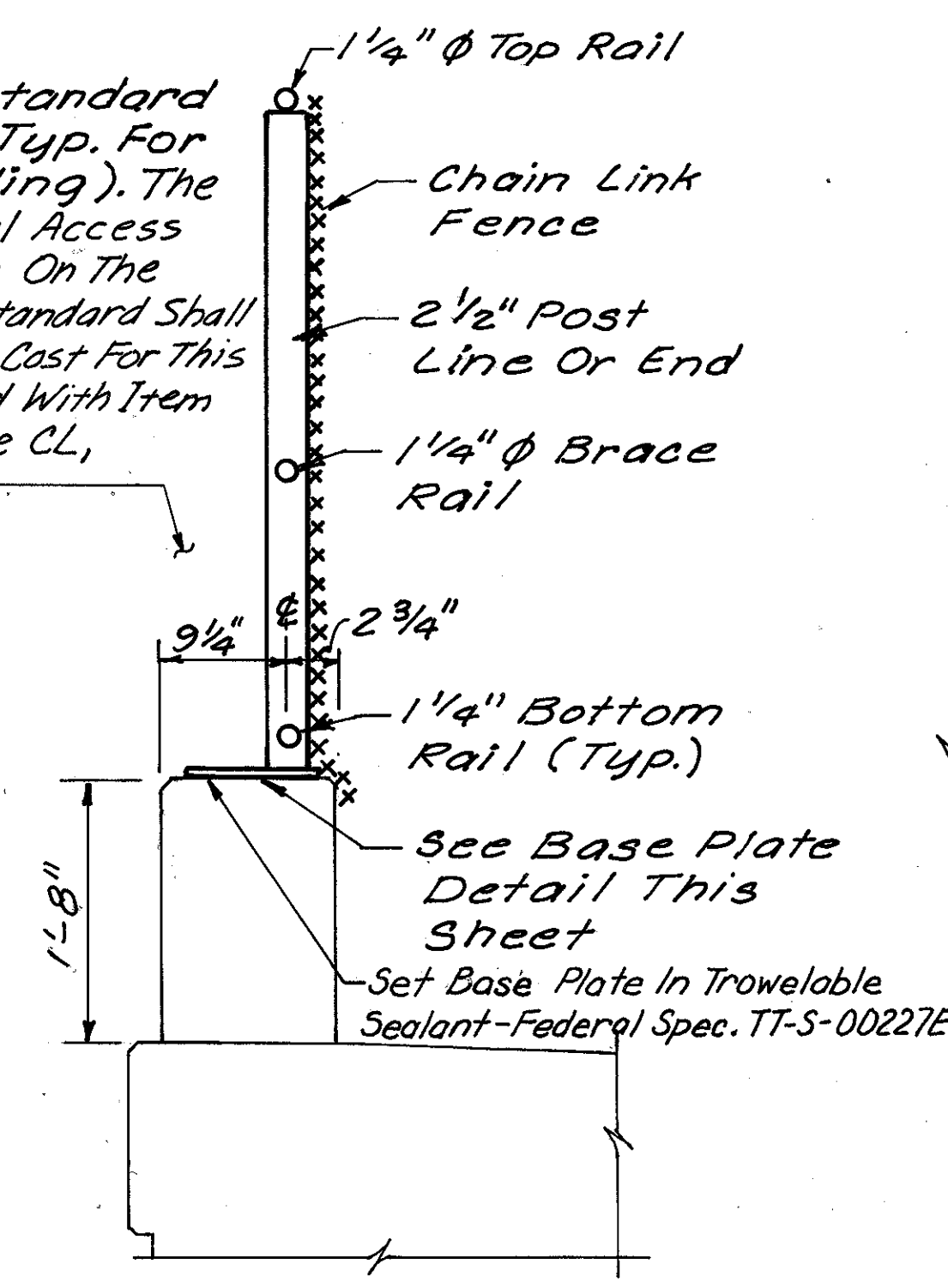
**SECTION B-B**

**LEGEND**  
 [Hatched Area] Indicates Area To Be Removed Per Item 202- Portions Of Structures Removed.

Light Pole Standard Not Shown (Typ. For 2, South Railing). The Missing Electrical Access Hole Cover Plate On The West Light Pole Standard Shall Be Replaced. The Cost For This Shall Be Included With Item 607, "Fence Type CL, As Per Plan."

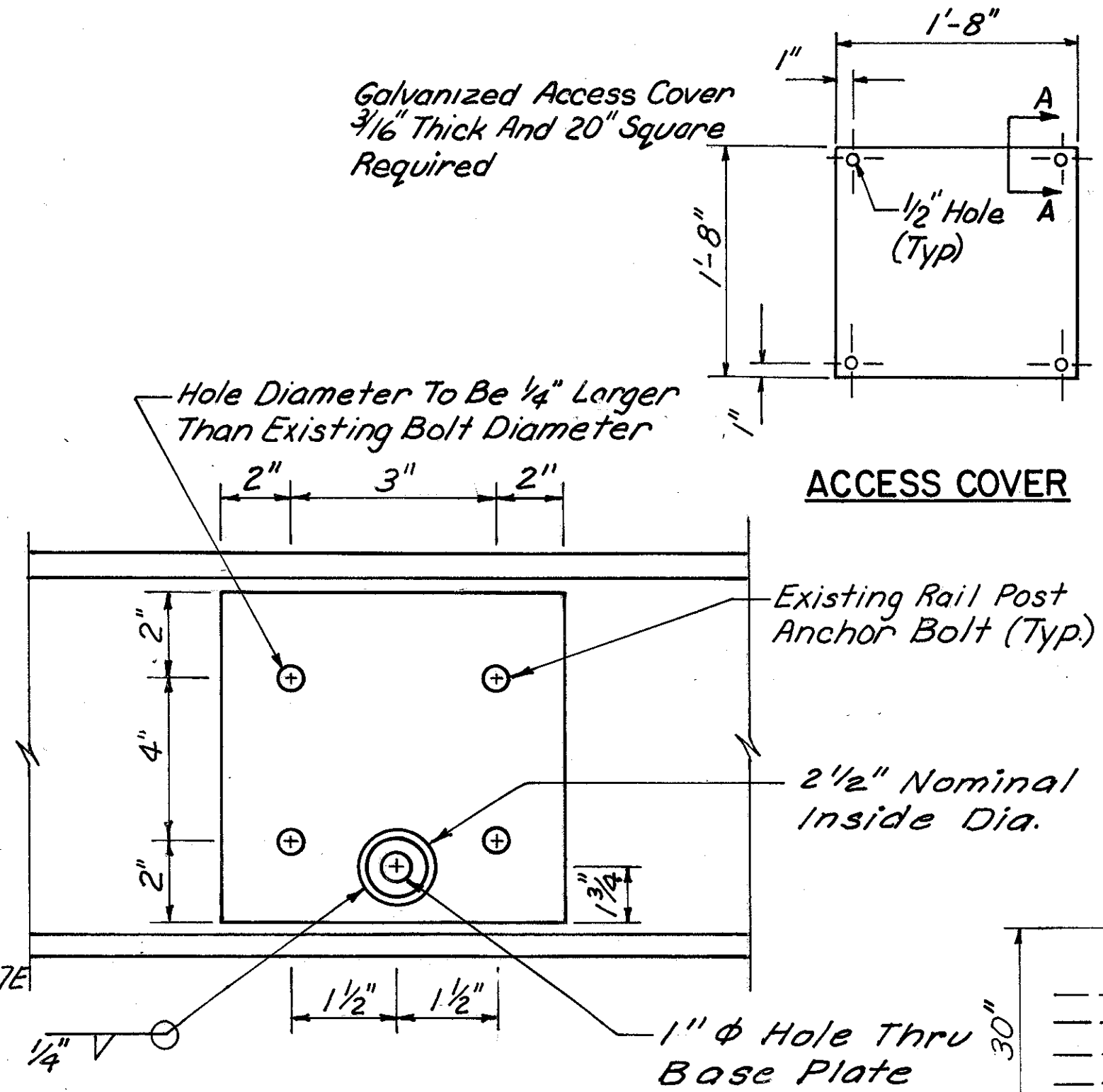


**EXISTING BRIDGE RAILING**



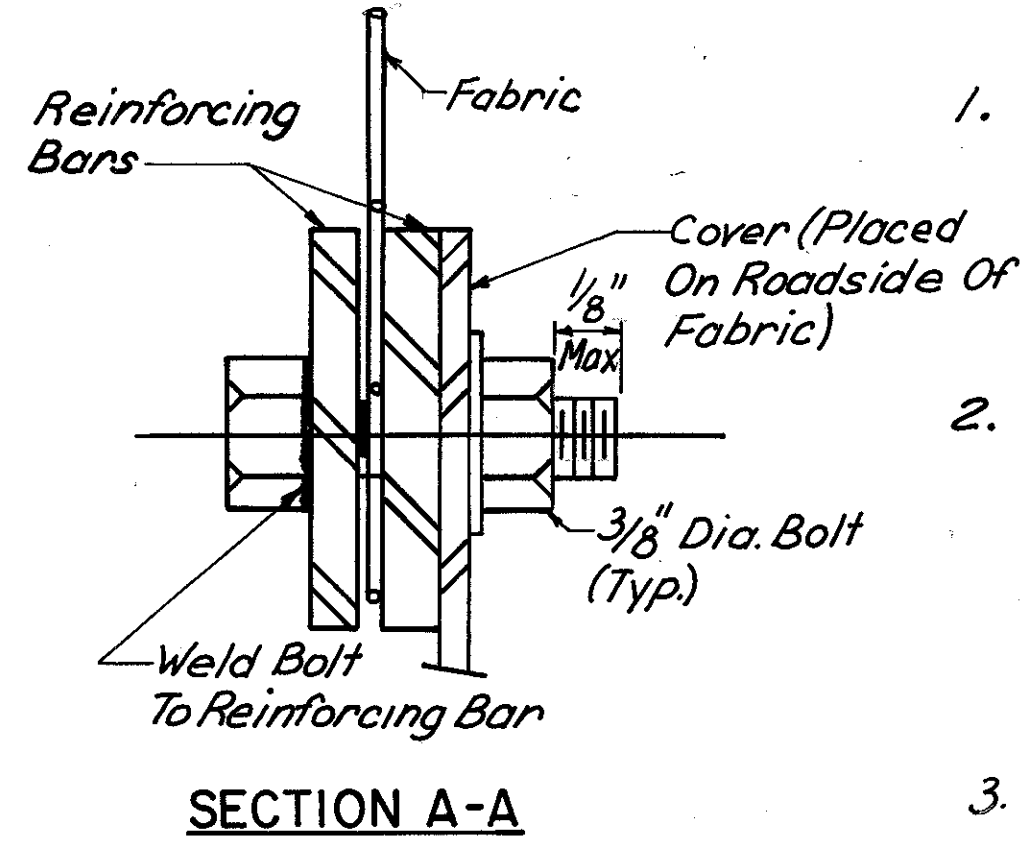
**PROPOSED BRIDGE RAILING**

**INSIDE ELEVATION**

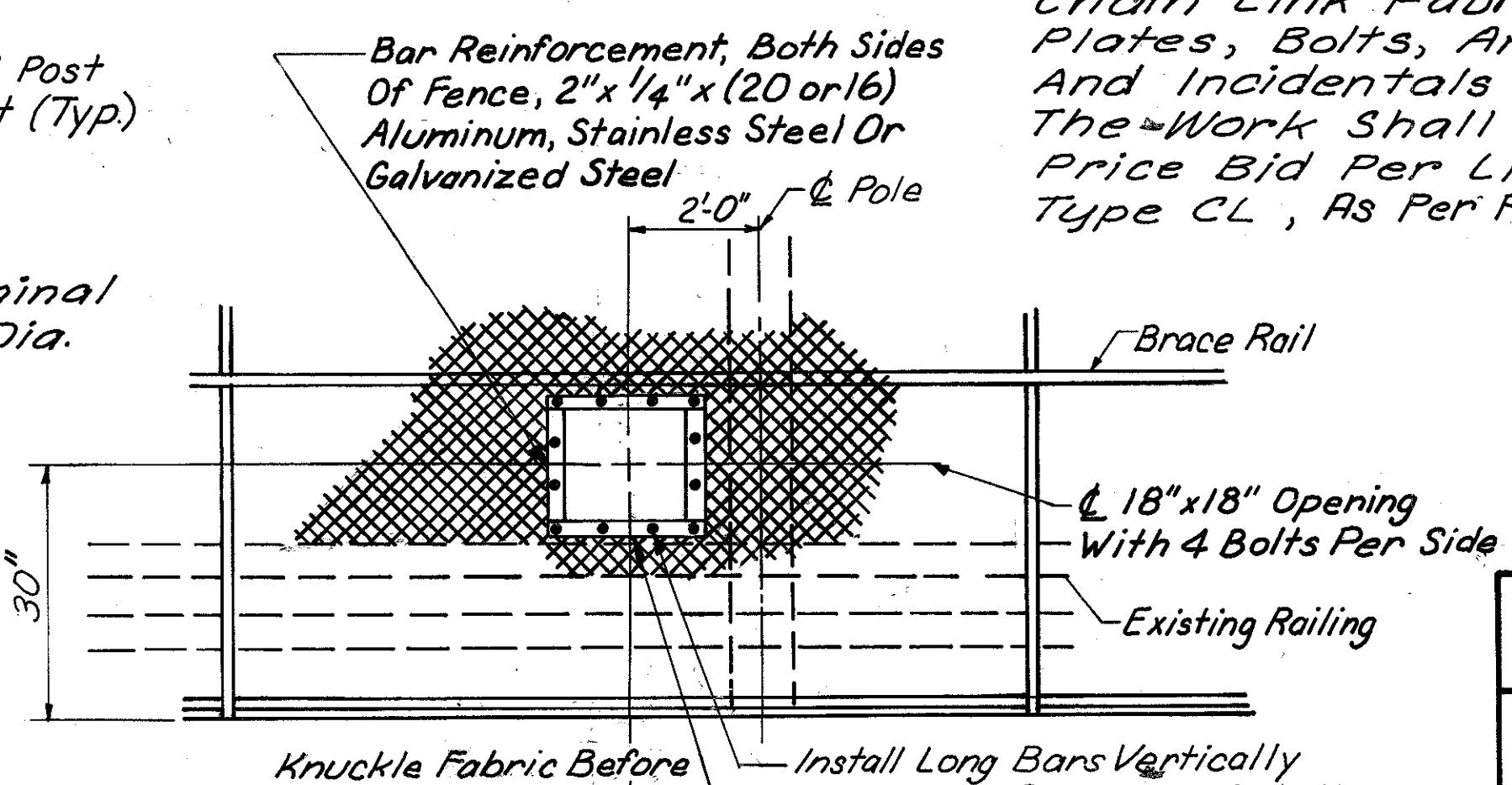


**PLAN VIEW BASE PLATE**

**ACCESS COVER**



**SECTION A-A**



**DETAIL AT LIGHT POLE**

**NOTES**

1. Post Tops Shall Be Fitted With A Cap Suitable For Accommodating A Continuous Top Rail. The End Post Caps Shall Be Of A Design To Contain The Top Rail To Prevent Lateral Movement.
2. The Contractor Shall Make Every Effort To Place Posts In A Vertical Position. If Necessary, Galvanized Metal Shims Shall Be Used To Secure Posts In A Plumb And Organized Position. Cost Of Shims Shall Be Included In The Price Bid For Item 607.
3. The Cost Of All Materials, Including Access Cover And Appurtenances, Chain Link Fabric, Posts, Brackets, Base Plates, Bolts, And Bolt Holes, Labor, Tools, And Incidentals Necessary To Complete The Work Shall Be Included In The Unit Price Bid Per Lin. Ft. For Item 607, "Fence Type CL, As Per Plan."

Burgess & Niple, Limited  
 Engineers and Architects  
 bn 1982

**FENCE DETAILS**  
 BRIDGE NO. LAK-44-0510  
 JACKSON STREET OVER S.R.44

DESIGNED	DRAWN	TRACED	CHECKED	REVIEWED DATE	REVISED
PJOD	RLH		WAC	WAC 12/89	