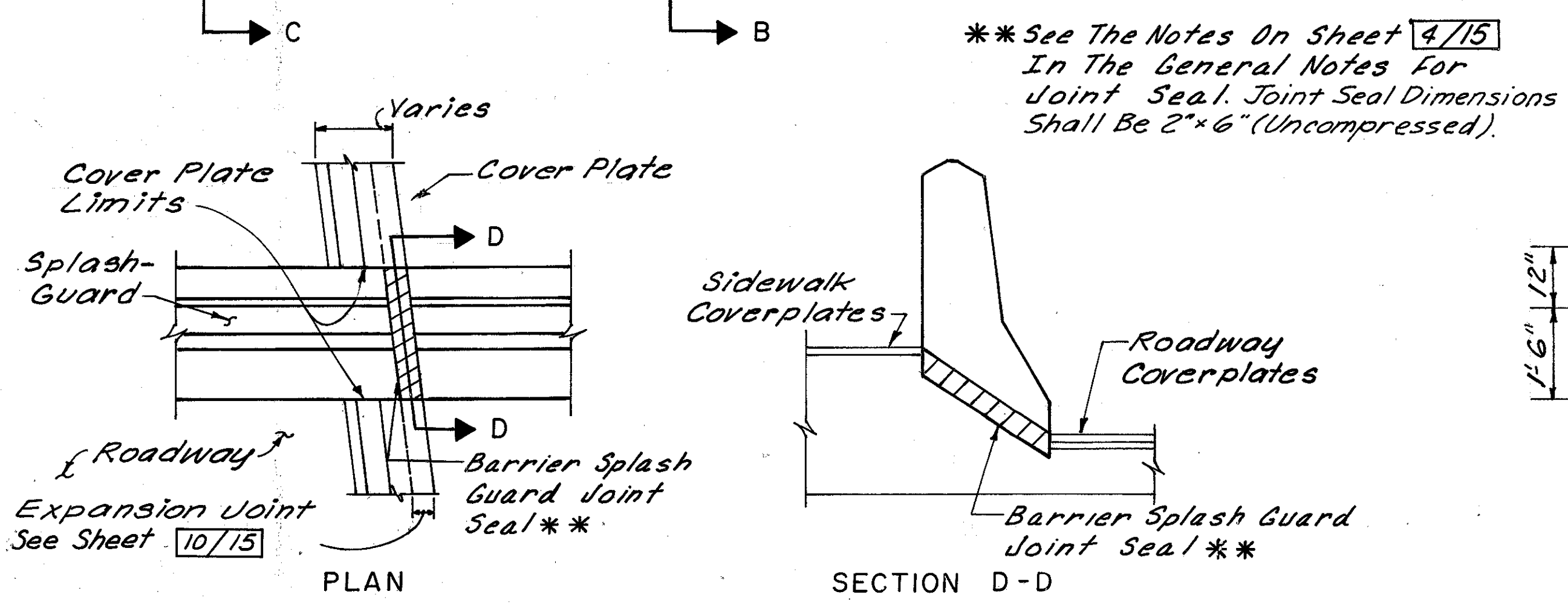


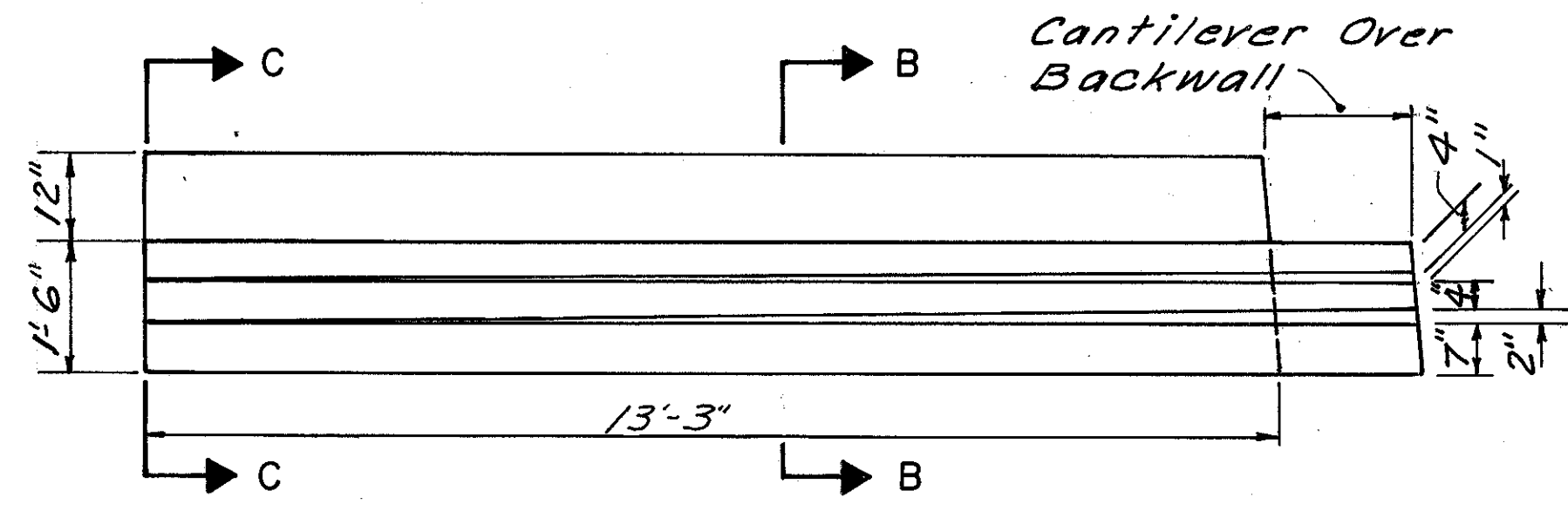
ELEVATION

Item 802-Barrier Reflector, Type B
Barrier Reflectors Shall Be Installed On
The Splash Guard In Accordance With Item
802. Barrier Reflector, Type B The Following
Quantity Has Been Carried To The Estimated
Quantities Sheet 5/15
Item 802-Barrier Reflector, Type B 6 Each.

Limits For Sealing Of Concrete Surfaces (Typ. For Section B-B Straight Transition Also)
Note: For Similar Dimensions And Notes, See Section B, Straight Transition, This Sheet.

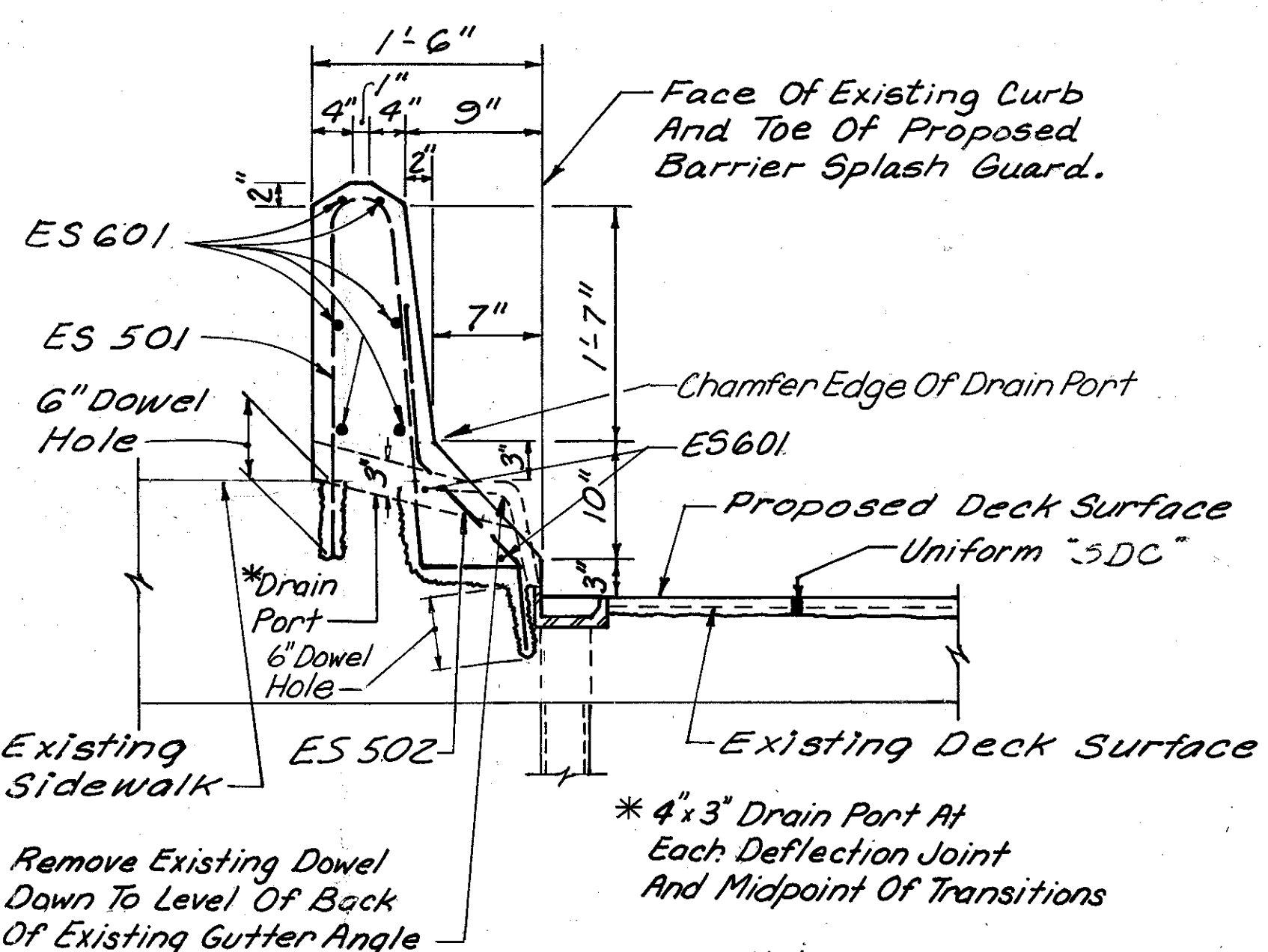


EXPANSION JOINT DETAIL



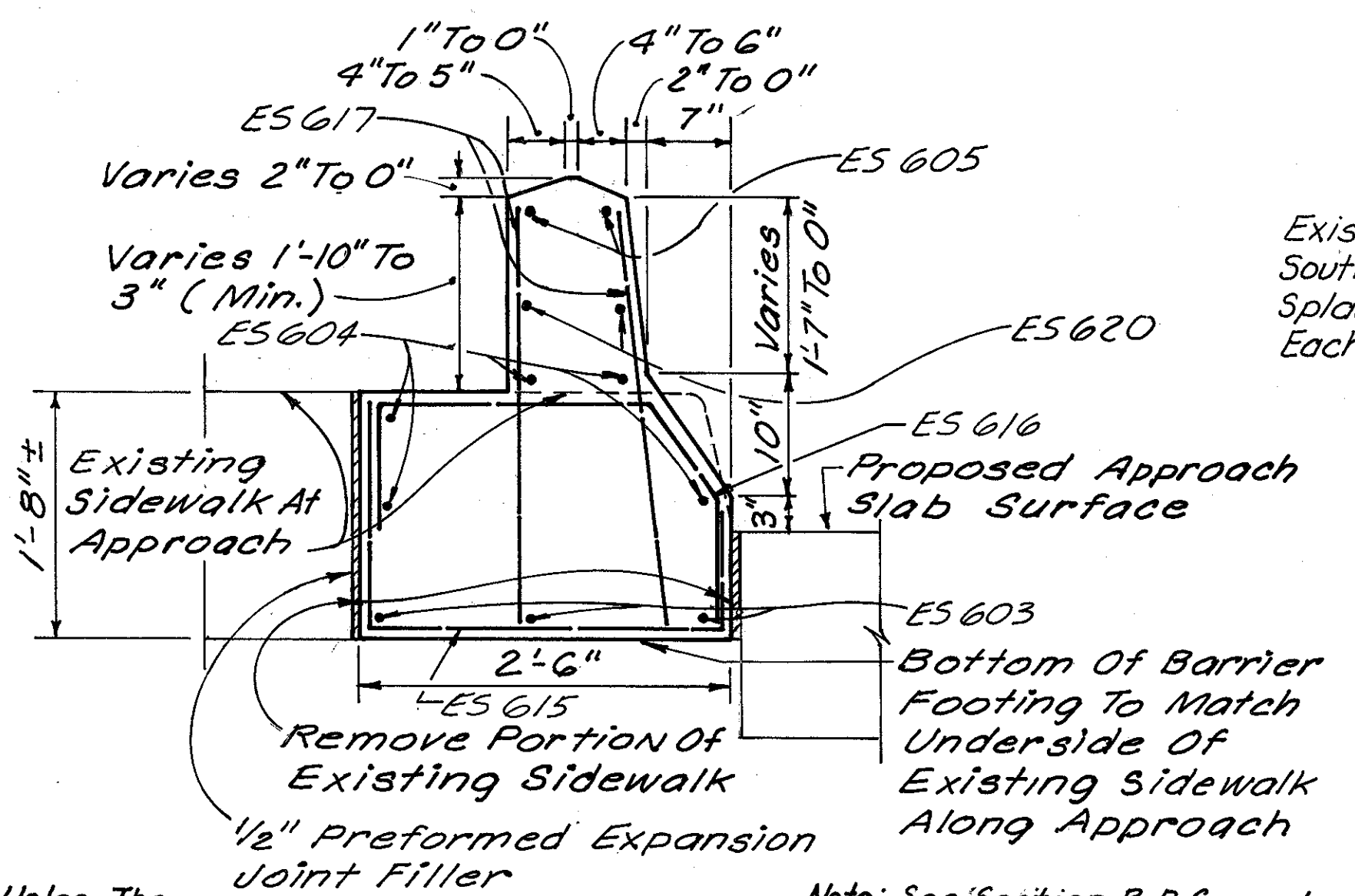
PLAN - TRANSITION

Note: Straight Transition Shown. At West End Of South Barrier, Provide Curved Transition To Match Existing Curve At The Approach (Radius To Vertical Face Of Barrier Splash Guard On Sidewalk To Be 25'-6"±) Length Of Curved Transition Measured Along Vertical Face On Sidewalk.



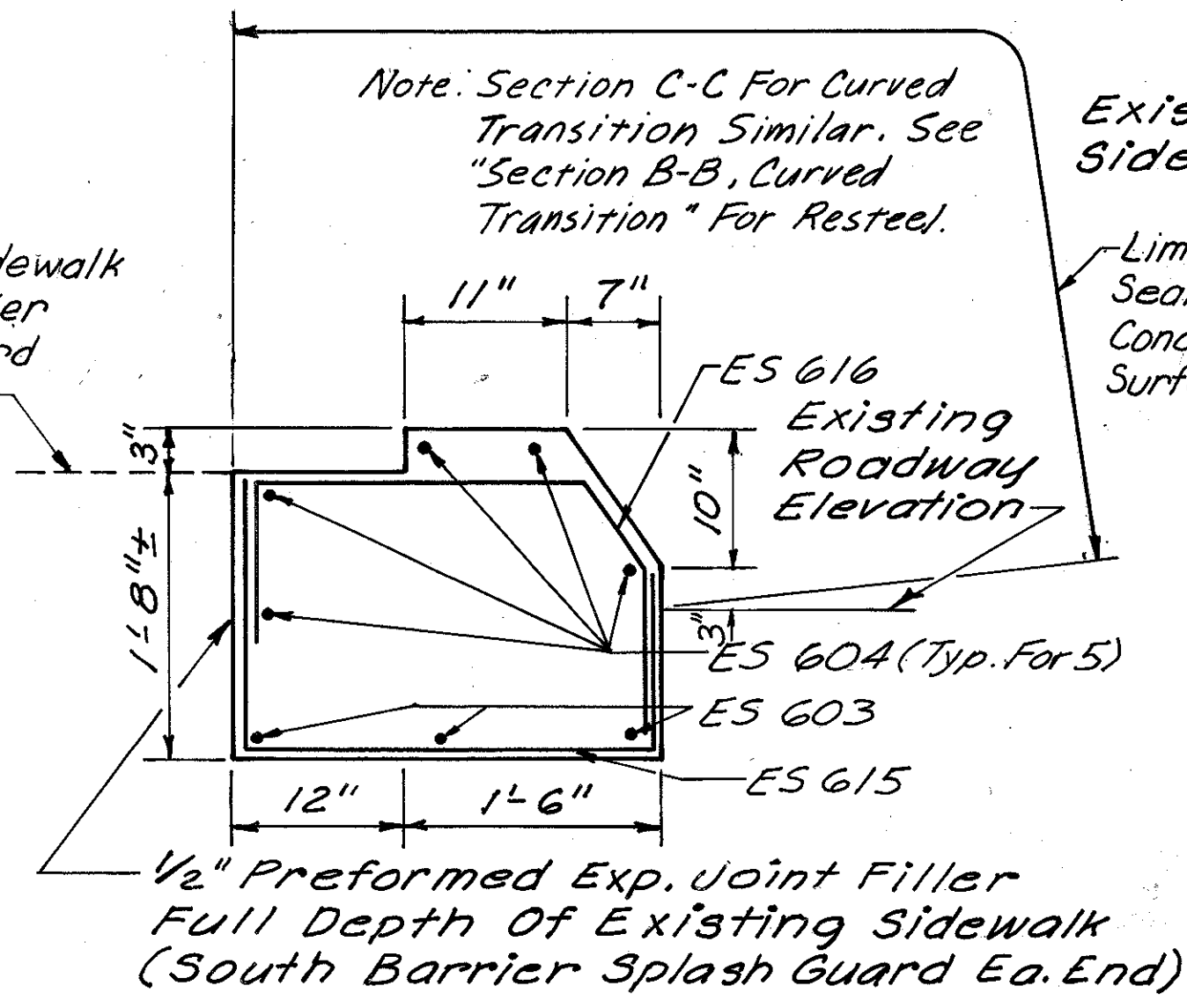
SECTION A-A

Note: Prior To Drilling Dowel Holes, The Contractor Shall Use A Rebar Locator To Verify The Location Of The Existing Deck Reinforcing. Dowel Holes Shall Not Be Drilled Over Open Traffic Lanes Below. See Maintenance Of Traffic Notes And Details.



SECTION B-B STRAIGHT TRANSITION

Note: See Section B-B Curved Transition On This Sheet For Limits For Sealing Of Concrete Surfaces



SECTION C-C STRAIGHT TRANSITION

Note: Section C-C For Curved Transition Similar. See Section B-B, Curved Transition For Reveal.

1/2" Preformed Exp. Joint Filler Full Depth Of Existing Sidewalk (South Barrier Splash Guard Ea. End)

*** Existing Sidewalk Fence Removed And Salvaged Is The Property Of The City Of Painesville And Shall Be Stockpiled For Pick Up By The City. The Work And Payment For This Item Shall Be In Accordance With Item 202-Portions Of The Structures Removed.

SECTION B-B CURVED TRANSITION

Existing Fence On South Sidewalk, Including All Base Plates, To Be *** Removed And Salvaged.

See Supplemental Spec. 850 As Per Plan For CP For Portions Of Deck To Be Removed.

Concrete Removal Shall Be Minimized, But Shall Be Adequate To Accommodate Proposed Steel And Shall Remove All Deteriorated Concrete At The Curb Edge. Sidewalk Curb Removal Shall Be In Accordance With And Included For Payment With Item 202-Portions Of Structures Removed.

SIDEWALK CURB REMOVAL ON BRIDGE

Burgess & Niple, Limited Engineers and Architects		8/15	
BARRIER SPLASH GUARD DETAILS			
BRIDGE NO. LAK - 44 - 0510 JACKSON STREET OVER S.R. 44			
DESIGNED PJOD	DRAWN HS/JRR	TRACED WAC	CHECKED WAC
REVIEWED DATE 12/89		REVISED	