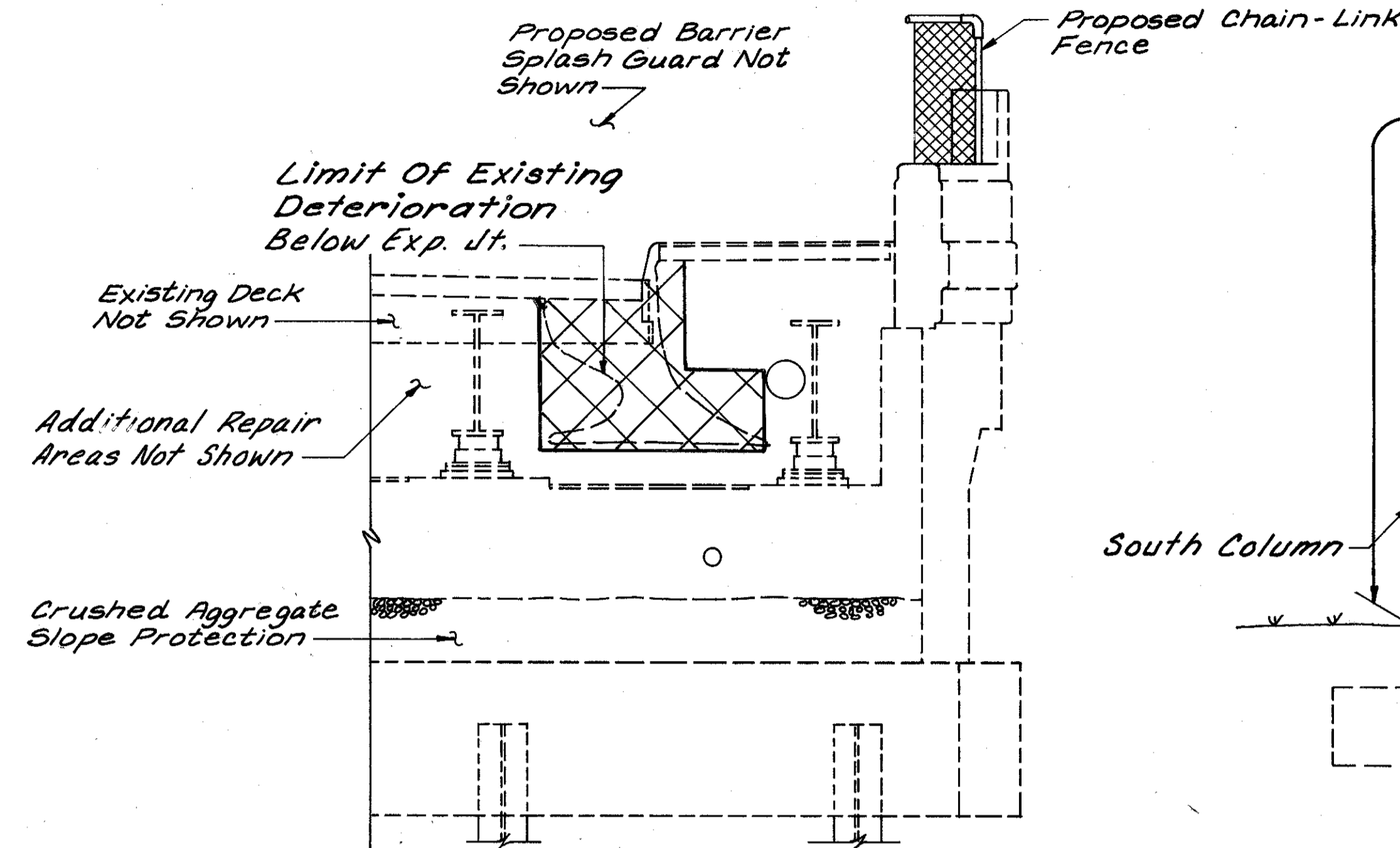
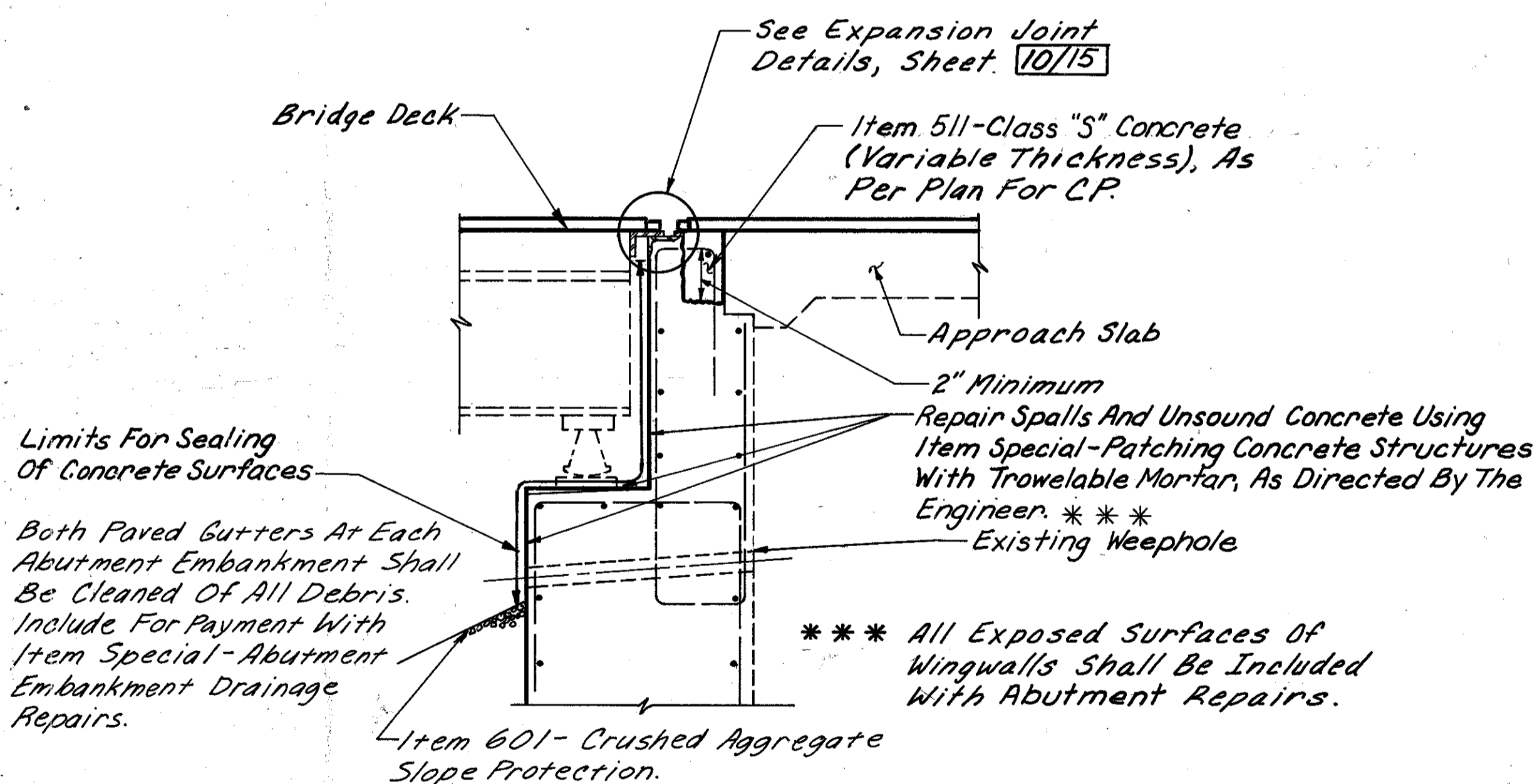
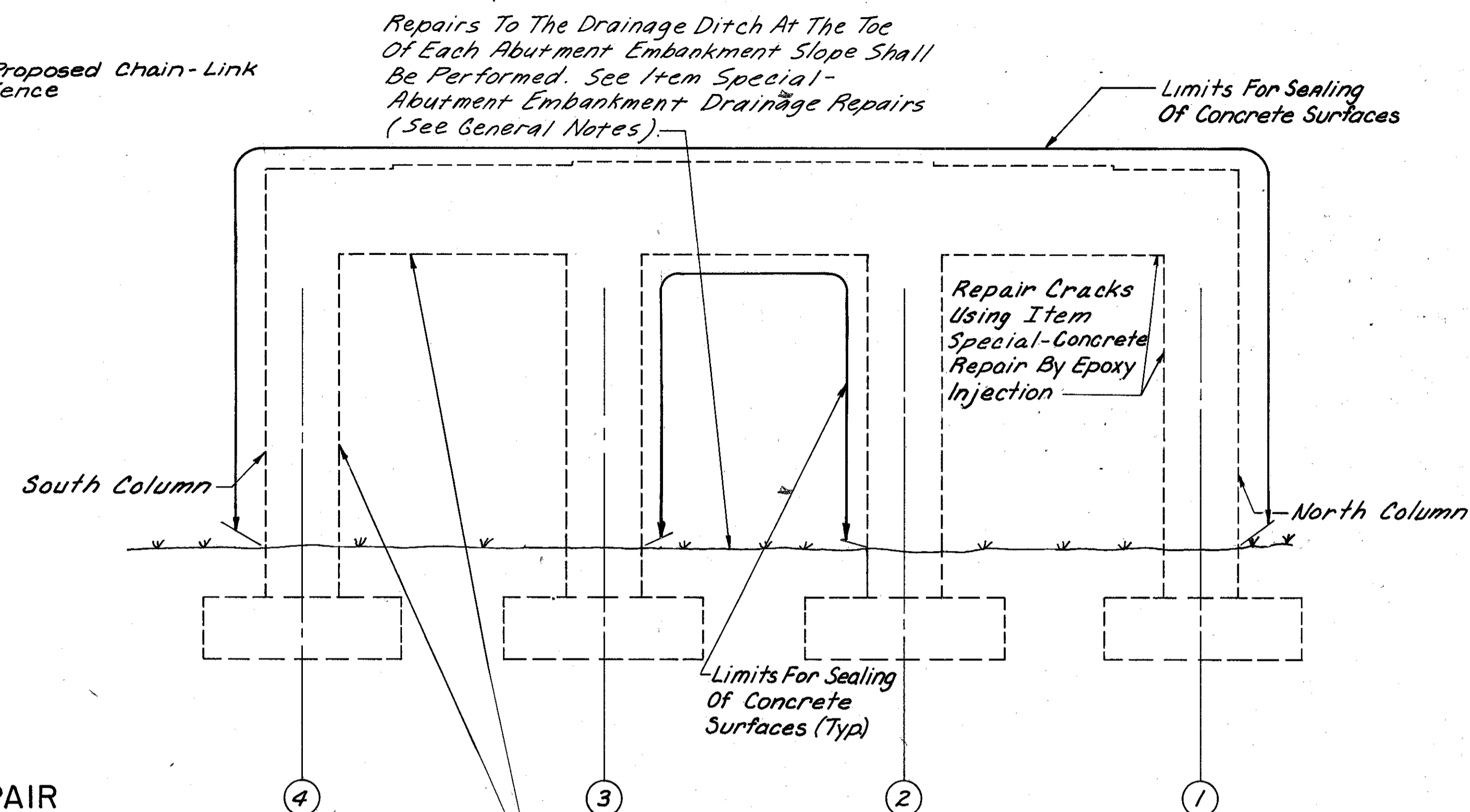


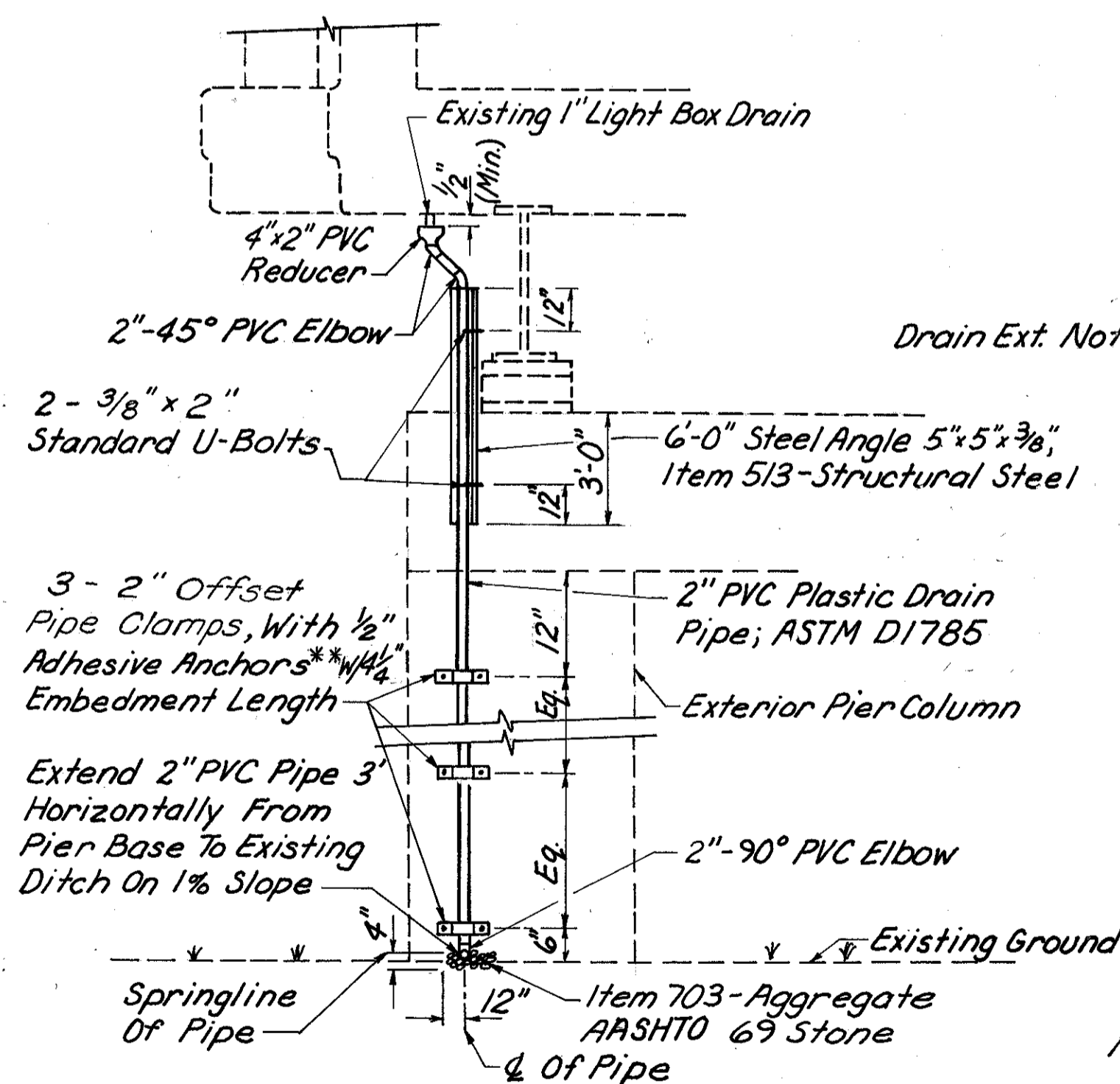
EXISTING BACKWALL



FORWARD ABUTMENT, SOUTH END REPAIR



PROPOSED ABUTMENT REPAIRS



TYPICAL LIGHT BOX DRAIN EXTENSION

- Drain Ext. Notes:
- All PVC Fittings To Conform To ASTM D2466.
 - Angle To Be Painted Per Item Special-Painting Of Existing Steel, System OZEU, Prior To Installation.
 - Install Angle To Pier Cap Beam With 3-2" Adhesive Anchors** With 4" Embedment Length. Anchor Bolts Shall Be Spaced 6" From Top Of Pier Cap, 6" From Base Of Angle, And 12" Spacing Between Bolts.
- ** 1/2" Adhesive Anchors As Per Supplemental Specification 852-Grout Anchoring With Polyester And Vinylester Mortars.

TYPICAL EXISTING PIER AND PROPOSED REPAIRS

SUMMARY OF PIER REPAIR QUANTITIES				
Pier No.	Item Special-Patching Concrete Structures w/ Trowelable Mortar		Item Special-Epoxy Injection	
	Patch Repair (S.F.) Measured	Estimated*	Crack Repair (L.F.) Measured	Estimated*
1	66	132	6	12
2	34	68	10	20
3	46	92	10	20
Totals		292		52

* Estimated Quantity Has Been Increased 100% Over Measured Quantity To Allow For Additional Deterioration. Exact Dimensions Shall Be Determined By The Engineer In The Field For Final Pay Quantity.

Note: One Drain Extension Req'd At Each Of The Two Light Pole Locations.

SUMMARY OF ABUTMENT REPAIR QUANTITIES						
Abutment	Item 519-Patching Concrete Structures, As Per Plan		Item Special-Patching Concrete Structures With Trowelable Mortar		Item Special-Epoxy Injection	
	Patch Repair (S.F.) Measured	Estimated*	Patch Repair (S.F.) Measured	Estimated*	Crack Repair (L.F.) Measured	Estimated*
Rear Abut.			55	110	21	42
Forward Abut.	12	24	2	4	19	38
Totals		24		114		80

Item Special-Sealing Of Concrete Surfaces			
Location	Type Of Sealant	Sealing Area Epoxy (S.Y.)	Sealing Area Non-Epoxy(S.Y.)
Superstructure	Epoxy	878	
Piers (Caps & Columns)	Non-Epoxy		319
Abutments ***	Epoxy	108	
Total		986	319

*** Including Backwalls, Wingwalls & Bridge Seats.

LEGEND

Indicates Area To Be Patched Per Item 519-Patching Concrete Structures, As Per Plan.

Burgess & Niple, Limited
Engineers and Architects

ABUTMENT- AND PIER REPAIRS
BRIDGE NO. LAK-44-0510
JACKSON STREET OVER S.R.44

DESIGNED	DRAWN	TRACED	CHECKED	REVIEWED DATE	REVISED
PJOD	HS		WAC	WAC 12/89	