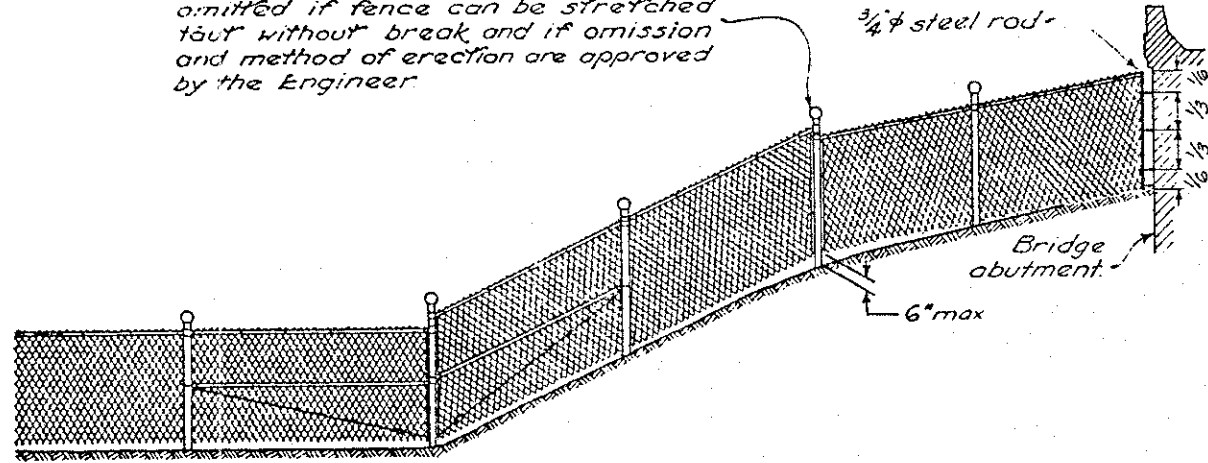
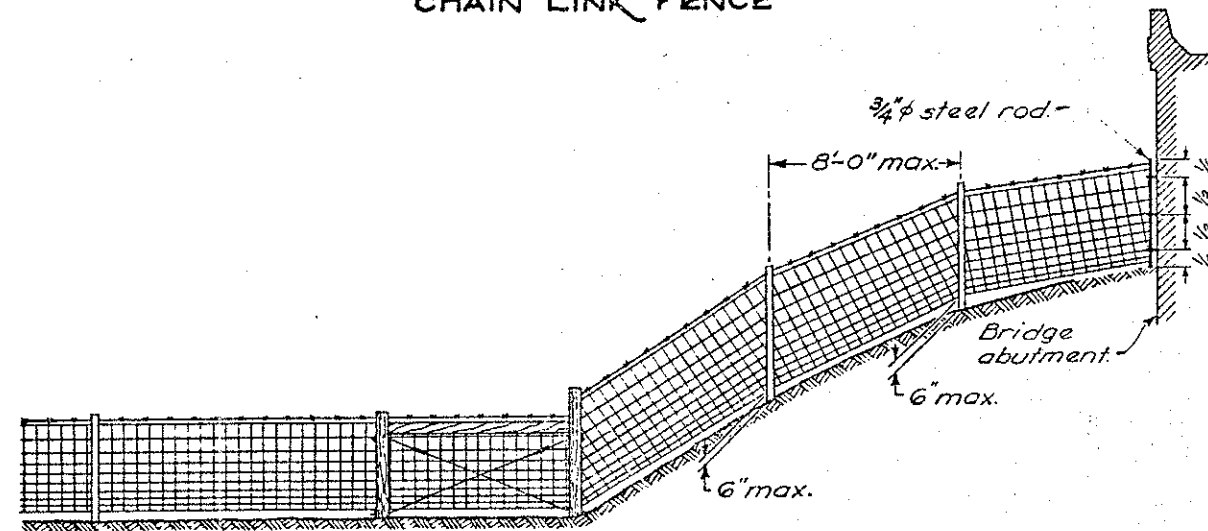


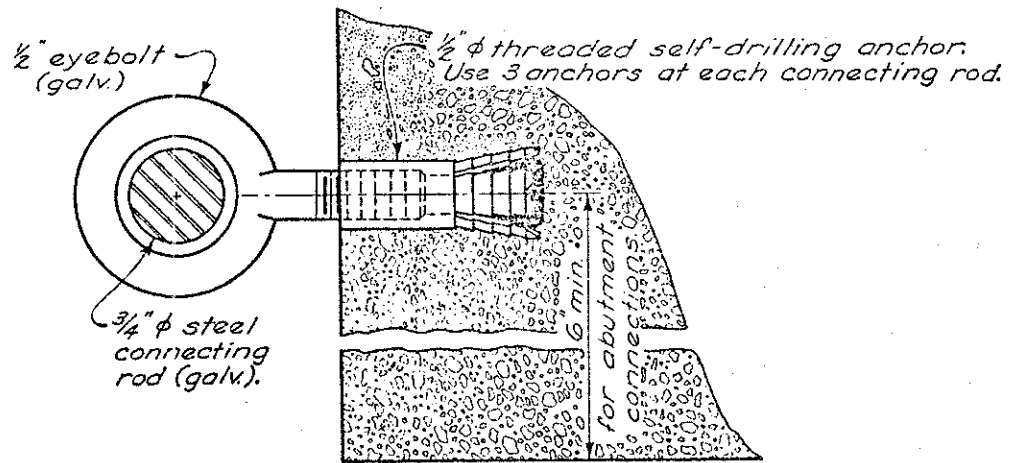
Break in fence at this post may be omitted if fence can be stretched taut without break and if omission and method of erection are approved by the Engineer.



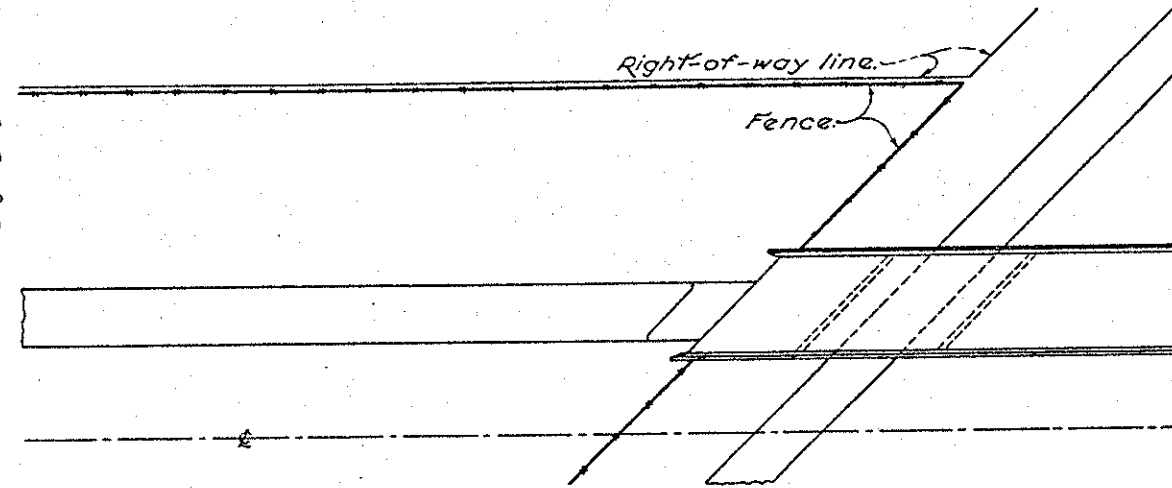
CHAIN LINK FENCE



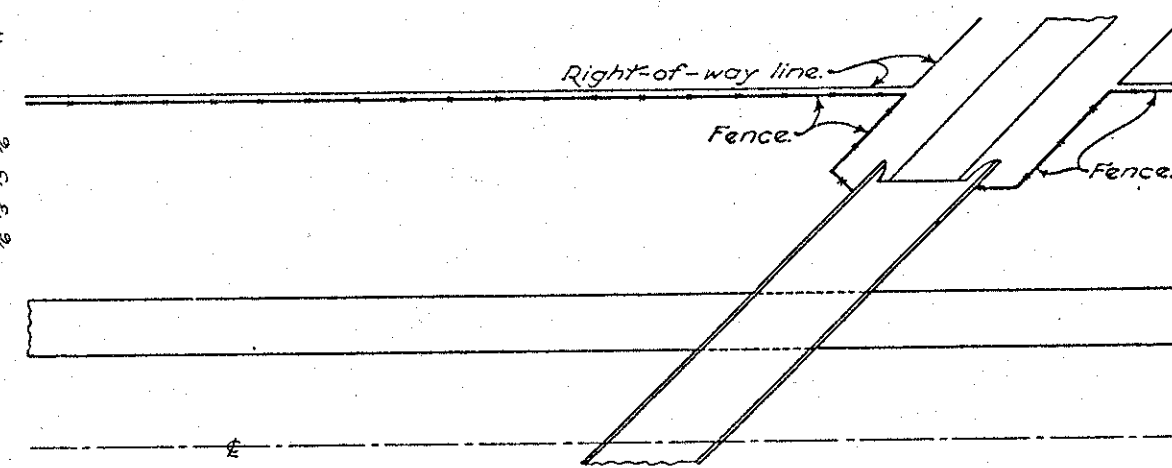
WOVEN WIRE FENCE



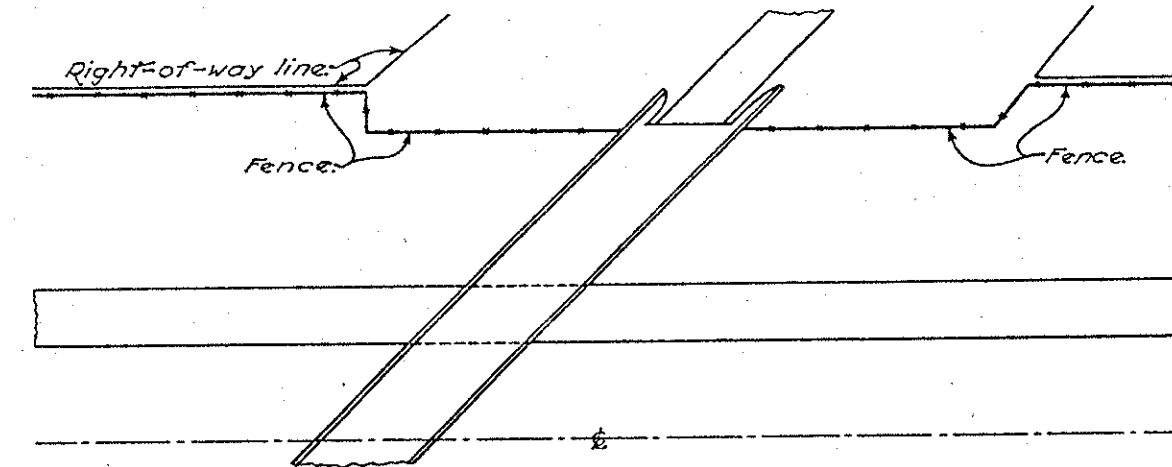
ABUTMENT CONNECTION



FENCE ARRANGEMENT AT FREEWAY OVERPASS



FENCE ARRANGEMENT CROSS ROAD ON ORIGINAL PROFILE



FENCE ARRANGEMENT CROSS ROAD ON HIGH FILL

NOTES

GENERAL: Details shown herein shall be used in conjunction with standard drawings F-1 and F-2.

ABUTMENT CONNECTION: Cost of furnishing and installing connecting rods, eyebolts and anchors shall be included in the unit price bid per linear foot of fence. Where needed to clear deck projections or other irregularities the shaft length of the eyebolt may vary.

ANCHORS: Self-drilling anchors shall conform to 712.01. Threaded steel inserts may be placed in the wet concrete when the structure is constructed instead of using self-drilling anchors.

EYEBOLTS shall conform with ASTM A 489, except that the bend test is waived and finish shall be hot dipped galvanized in accordance with ASTM A 153.

CLEARANCE of the lower wires on embankments approaching bridge connections may vary from 0 inches to 6 inches.

BUREAU OF ROADWAY DESIGN OHIO DEPARTMENT OF TRANSPORTATION	
FENCE DETAILS AT BRIDGES	DATE
	2-1-63
	6-1-63
	10-1-66
	2-20-68
3-10-69	
5-1-76	
STANDARD CONSTRUCTION DRAWING	F-3
APPROVED <i>[Signature]</i>	ENGR. R. D.