

NOTES

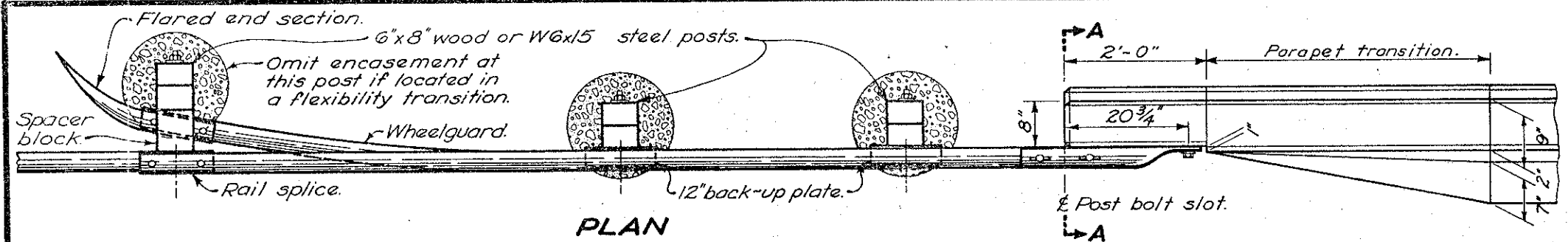
PAYMENT for item 606, each, Bridge terminal assembly, Type —, shall include the additional cost in excess of normal guardrail cost, such as: additional or heavier posts, concrete encasement, wheelguard, terminal connector, and other hardware, etc.; except, the TS8x4 spacers and tubing outside the bridge limits, and the concrete insert anchor assemblies are included in the bridge rail or parapet cost.

TYPE A: The wheelguard shall be required on all uncurbed approach connections and on all uncurbed trailing connections on undivided highways. The wheelguard shall be omitted: on all curbed connections, on uncurbed trailing connections on divided or directional roadways, and all three posts shall have spacer blocks and concrete encasement.

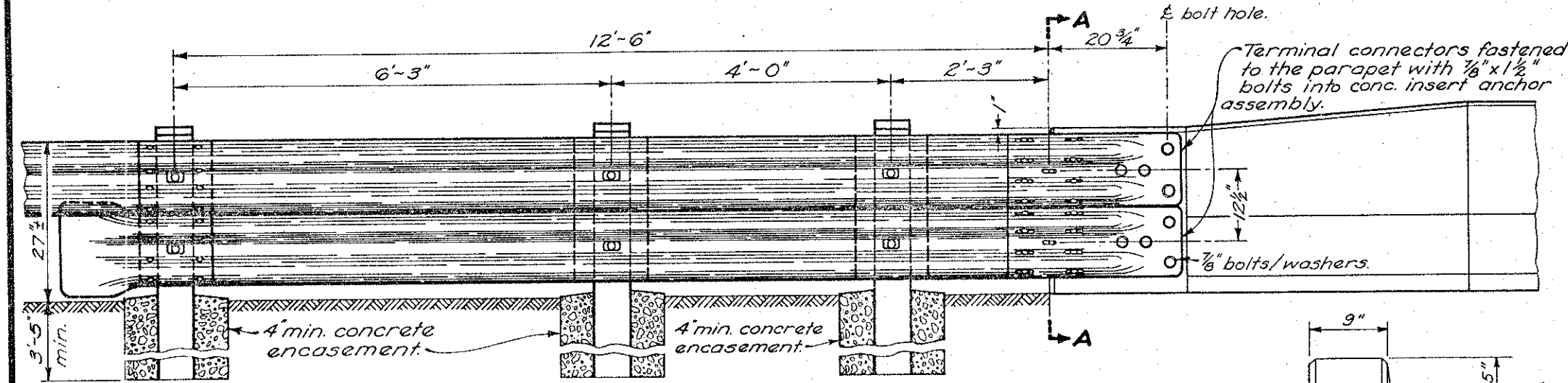
TERMINAL CONNECTORS of Type A shall be fastened to existing (safety shape) parapets, not having concrete insert anchor assemblies, with four 7/8" dia hexhead bolts through the parapet with 3" x 3" x 1/2" plate washers and hex nuts on back of parapet.

POST TYPE shall be the same material type as used on approach guardrail for Type A and the outermost post of Type B.

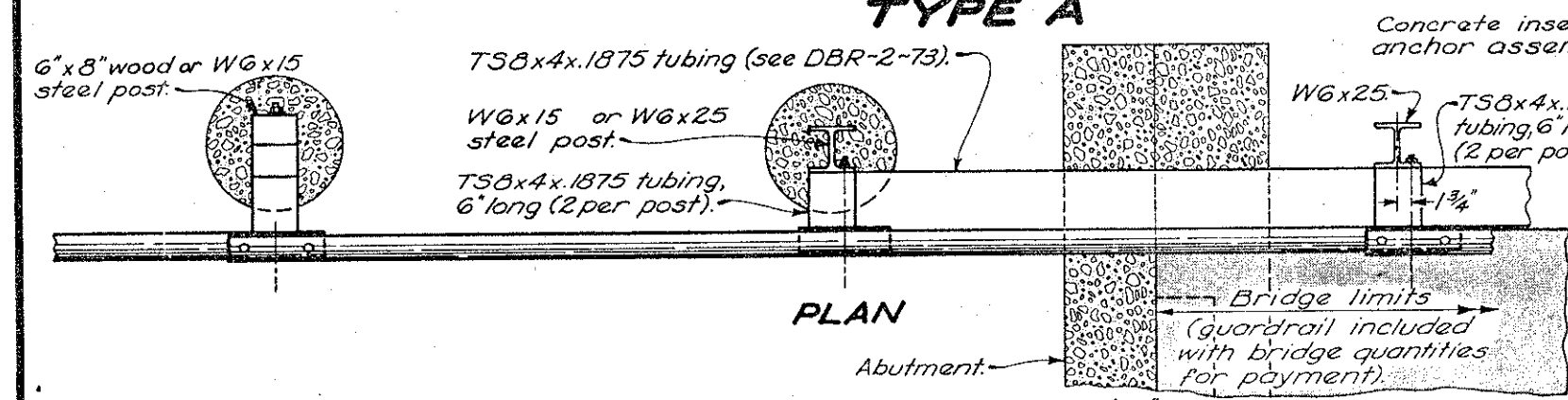
FOR DETAILS not shown, see GR-1 and other Standard Construction Drawings pertaining to design of specific guardrail Type.



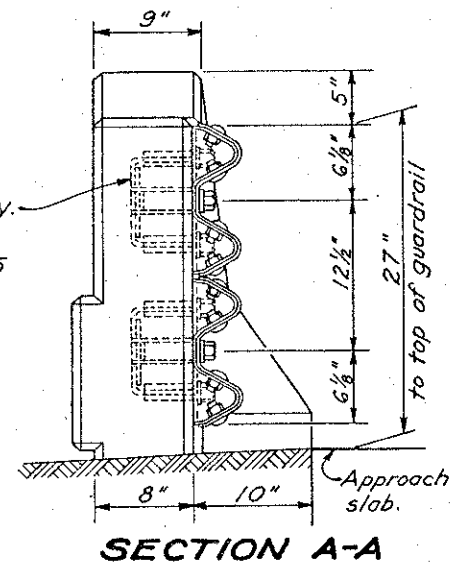
PLAN



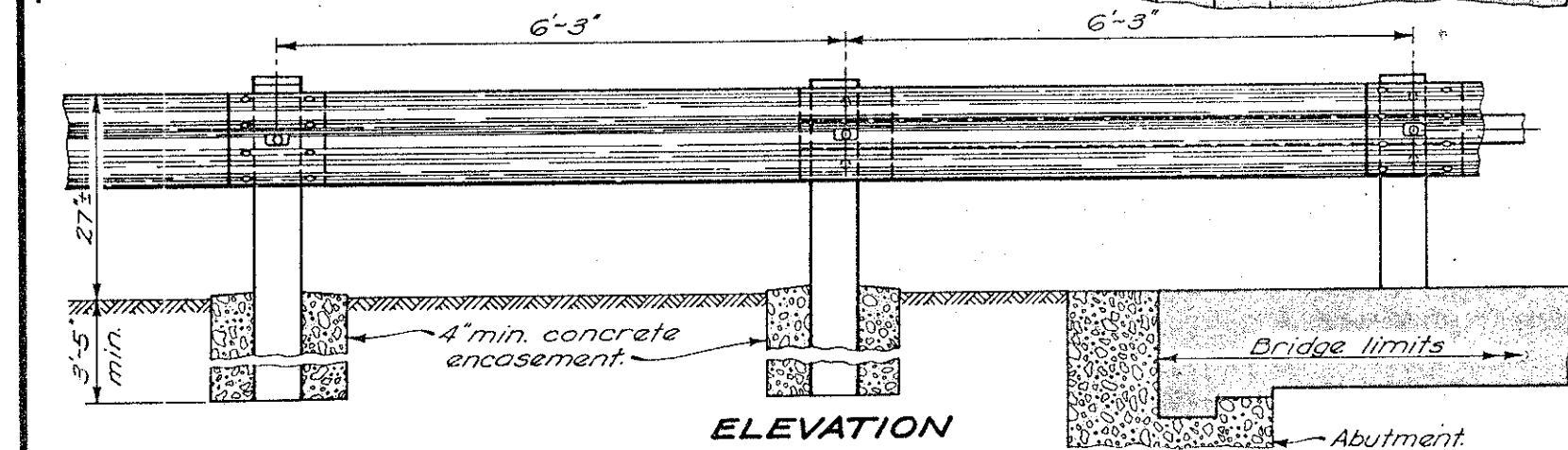
ELEVATION TYPE A



PLAN



SECTION A-A



ELEVATION TYPE B

BUREAU OF LOCATION AND DESIGN OHIO DEPARTMENT OF TRANSPORTATION	
BRIDGE TERMINAL ASSEMBLIES	
DATE 1-1-71 11-9-71 12-6-76 2-5-82	
STANDARD CONSTRUCTION DRAWING	GR-3
APPROVED _____	ENGR., L.B.D.