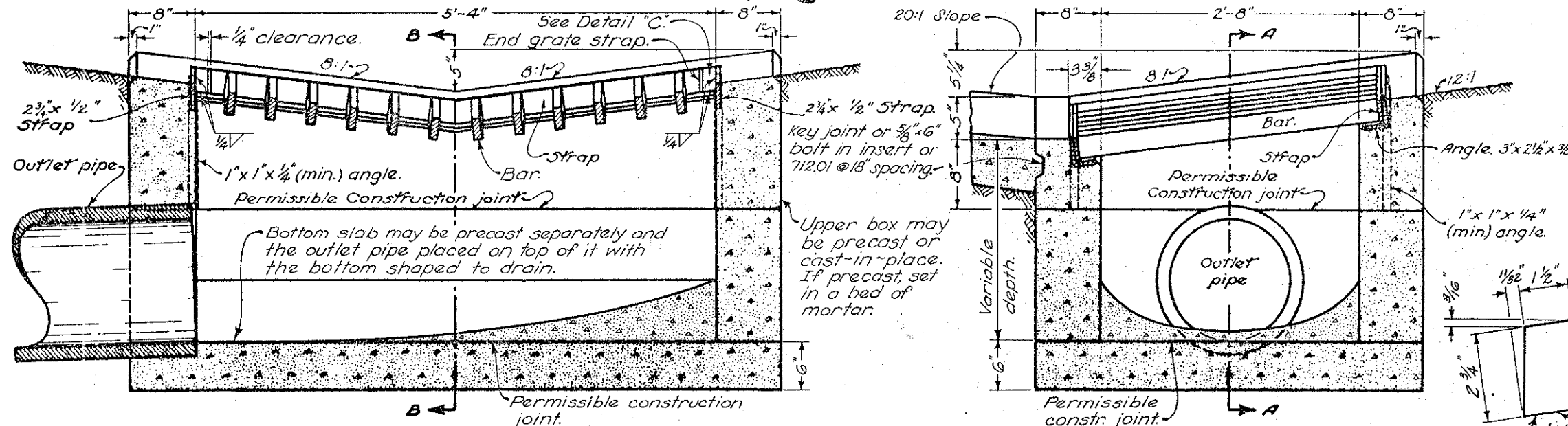


STANDARD NO. 4 CATCH BASIN

BRICK, concrete block, or cast-in-place walls shall have a nominal thickness of 8 inches from the bottom slab to the upper box. Precast walls shall have a minimum thickness of 6 inches and be reinforced sufficiently to permit shipping and handling without damage.



OPENINGS for pipes shall be O.D. + 2" when prefabricated or field cut. BASINS OVER 12 FEET IN DEPTH shall be precast or cast-in-place concrete; reinforced with No. 4 bars on 12" centers both vertically and horizontally with 2" clearance from inside wall face. GRATING AND FRAME shall be of structural steel in accordance with 711.01 and 5. The design shall be essentially the same and equally as strong as the one shown hereon.

GRATE shall be depressed 5" below the upstream end of the concrete apron at the centerline of the ditch.

Unless grate "E" is specifically required by the plans, grate "D" shall be furnished and installed.

LOCATION when given on the plans is the center of the grate. The elevation is the lowest point on the grate.

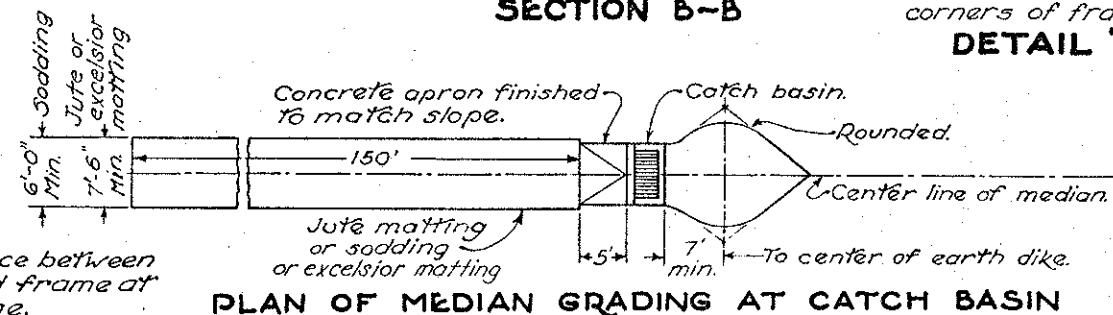
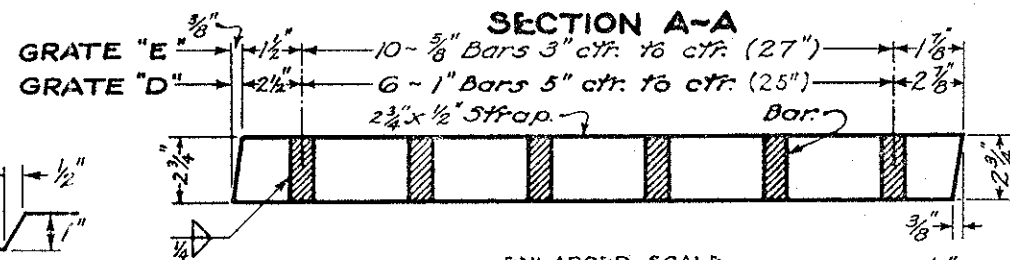
DITCH PROTECTION: Provide a 150 foot length of sodding, jute matting or excelsior matting as shown. Installation and payment for ditch protection shall conform with 660, 667 or 668 respectively.

BASINS IN SAG: When catch basin is placed in a sag, omit the earth dike and longitudinal slope of grate, also provide concrete apron and ditch protection on each side of basin.

STEPS shall be provided where the depth exceeds 72" and shall meet the requirements of MH-1.

CONCRETE APRONS to be adjusted in such a manner that the outside edges be at equal elevation.

COST: The concrete apron and downstream dike shall be considered incidental to Item 604, Catch Basins. However, the apron may be deleted by specifying Item 604, Catch Basins, Without Apron.

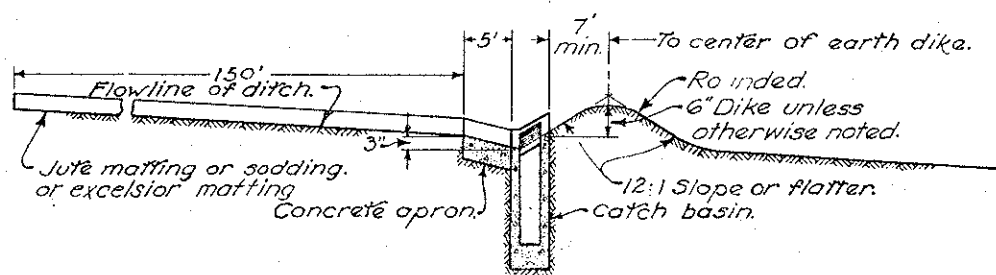
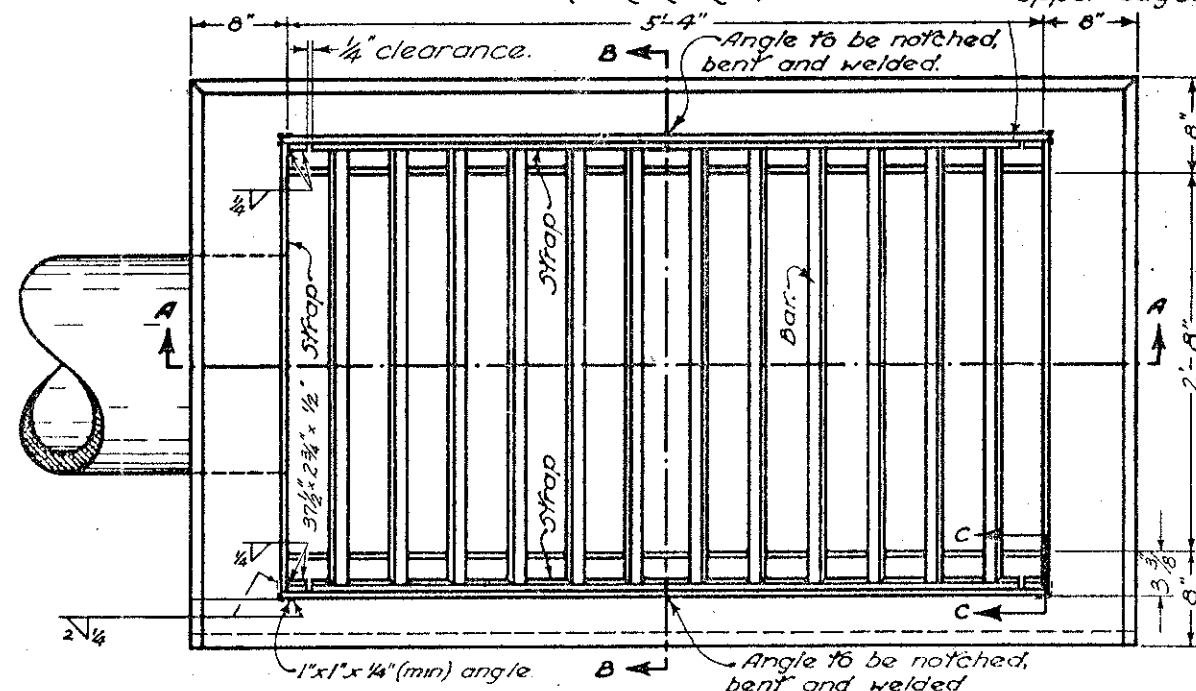


KEY JOINT

ENLARGED SCALE SECTION THRU GRATE (2 REQUIRED)

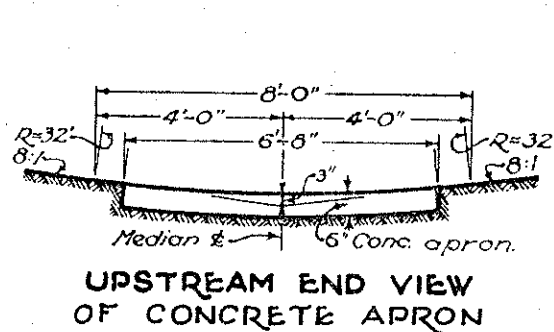
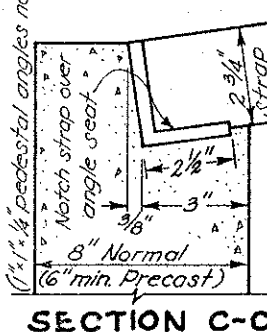
1/4" min. clearance between grate and frame at upper edge.

PLAN OF MEDIAN GRADING AT CATCH BASIN



(1/4" and pedestal angles not shown)

PROFILE OF MEDIAN GRADING AT CATCH BASIN



CONSTRUCTION INFORMATION	
Typical weight of grate =	375 lbs.
Typical weight of frame =	100 lbs.

BUREAU OF LOCATION AND DESIGN
OHIO DEPARTMENT OF TRANSPORTATION

CATCH BASINS

STANDARD CONSTRUCTION DRAWING
APPROVED *[Signature]* ENGR. L. & D.

DATE
6-1-65
6-6-65
9-1-69
5-1-79
11-10-83

CB-4