

CHECKED BY: *CLB*  
 DATE: 11/20/11

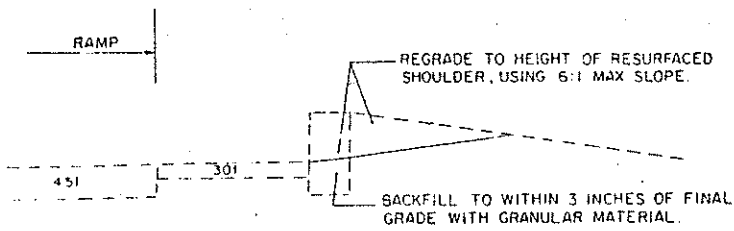
FHWA REGION	STATE	PROJECT
5	OHIO	

LAKE COUNTY  
LAK-44-4.14

ITEM 202 - CURB REMOVED, AS PER PLAN

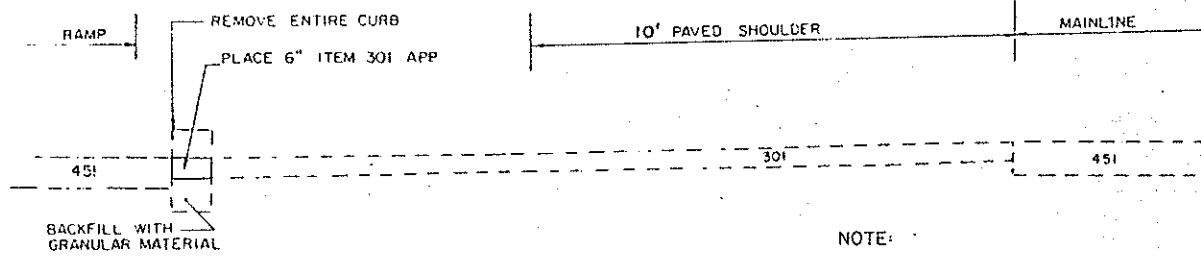
THE FOLLOWING DETAILS AND SPECIFICATIONS SHALL APPLY TO THIS ITEM OF WORK:

CASE 1



NOTES  
 RESTORE DISTURBED AREA IN CONFORMANCE WITH ITEM 659.  
 ALL WORK SHOWN SHALL BE INCLUDED UNDER ITEM 202 (WITH THE EXCEPTION OF THE 301 ITEM.)

CASE 2



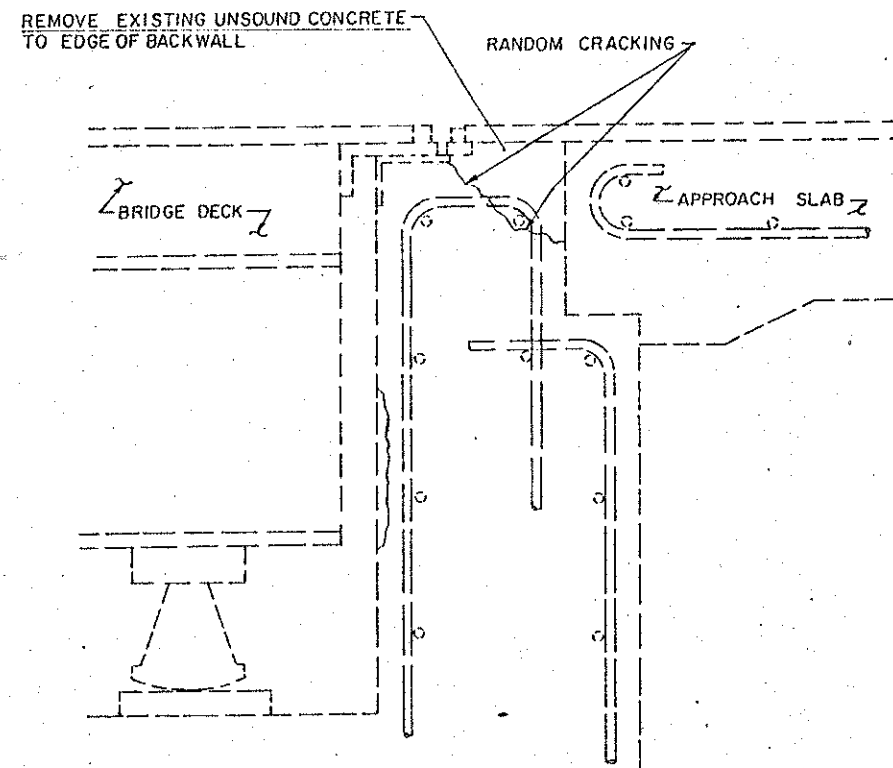
NOTE:  
 CONNECT THE OUTSIDE EDGE OF THE 10 FT. PAVED SHOULDER AND THE CURB GUTTER LINE WITH A STRAIGHT GRADE

ESTIMATED QUANTITIES

RAMP N <sup>o</sup>	LOCATION		202	
	FROM	TO	CURB REMOVED AS PER PLAN	LIN. FT.
2	0+00	3+75		375
H	11+71.47	14+71.47		300
E	4+59.62	1+59.82		300
PARTICIPATION - TOTALS				975

BACKWALL REPAIR QUANTITIES

ITEM	UNITS	TOTAL		BRIDGE No. LAK-44-0620
SPCL.	SQ. FT.	710	PATCHING CONCRETE STRUCTURES WITH SUPERIOR BONDING MATERIALS	710
SPCL.	SQ. YD.	2,029	SEALING OF CONCRETE SURFACES (EPOXY) (SEE PROPOSAL NOTE)	2,029

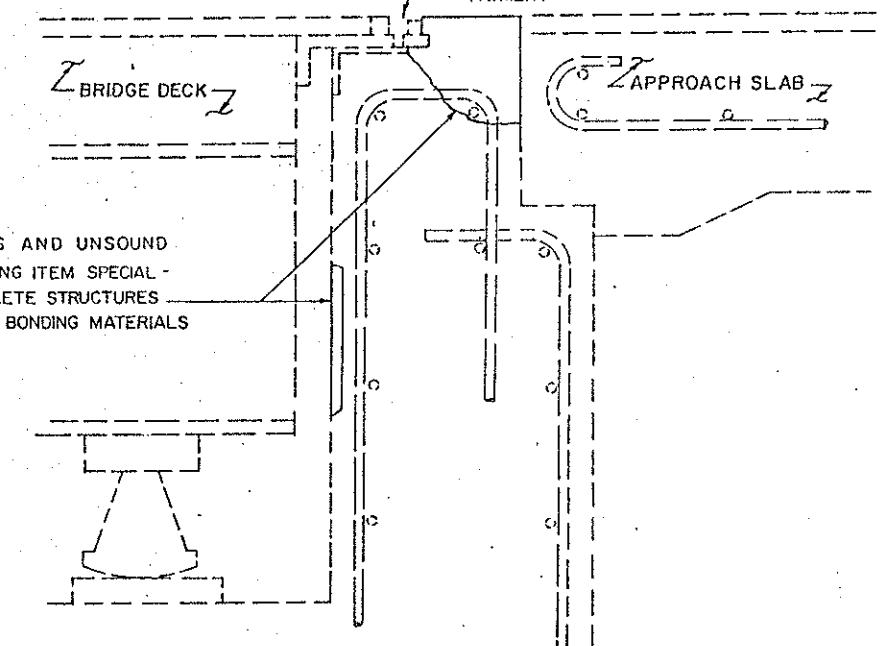


EXISTING BACKWALL  
(STRUCTURE LAK-44-0620)

ALL REPAIRS SHALL BE AS DIRECTED BY THE ENGINEER.

ALL COSTS FOR CUTTING AND WELDING TO RESET JOINT (IF NECESSARY) ARE INCLUDED UNDER ITEM SPECIAL-PATCHING CONCRETE STRUCTURES WITH SUPERIOR BONDING MATERIALS FOR PAYMENT

REPAIR SPALLS AND UNSOUND CONCRETE USING ITEM SPECIAL-PATCHING CONCRETE STRUCTURES WITH SUPERIOR BONDING MATERIALS



PROPOSED BACKWALL REPAIR  
(STRUCTURE LAK-44-0620)