

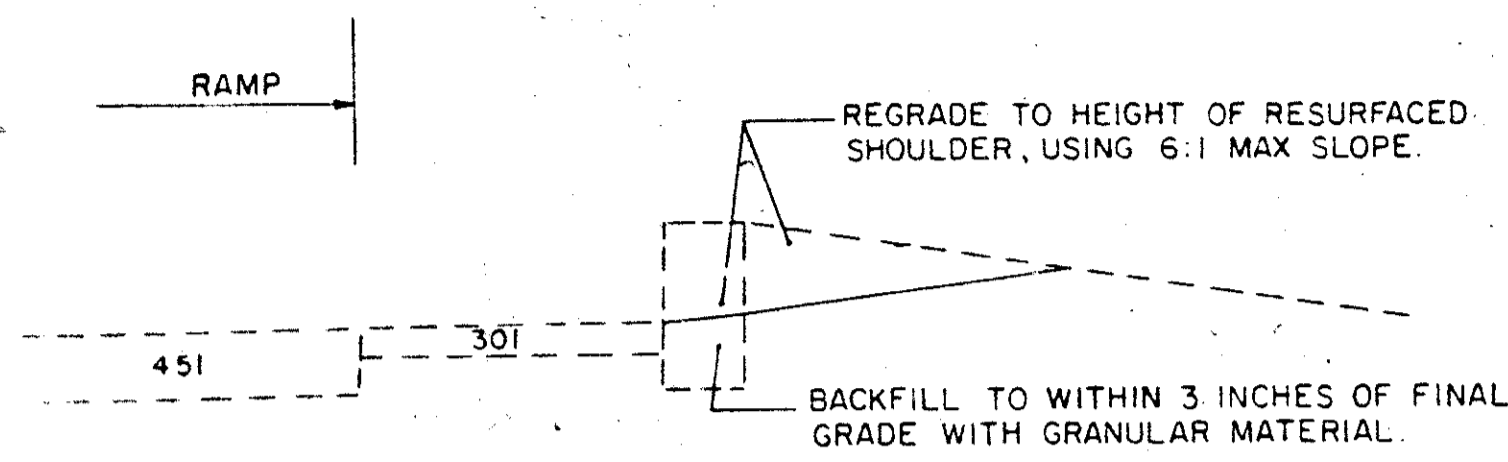
COMPUTED BY: *CLB*
 CHECKED BY: *LMM*

FHWA REGION	STATE	PROJECT	
5	OHIO		

ITEM 202 - CURB REMOVED, AS PER PLAN

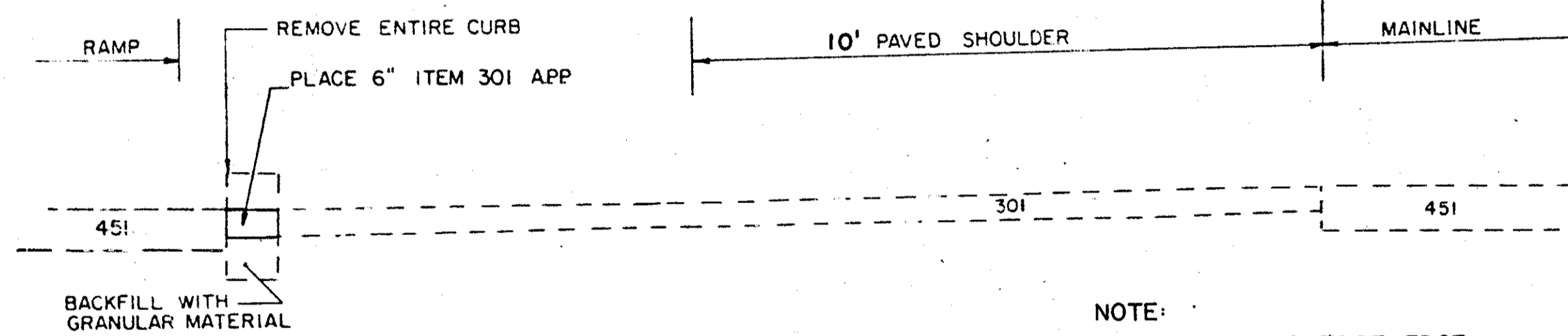
THE FOLLOWING DETAILS AND SPECIFICATIONS SHALL APPLY TO THIS ITEM OF WORK:

CASE 1



NOTES
 RESTORE DISTURBED AREA IN CONFORMANCE WITH ITEM 659.
 ALL WORK SHOWN SHALL BE INCLUDED UNDER ITEM 202 (WITH THE EXCEPTION OF THE 301 ITEM.)

CASE 2



NOTE:
 CONNECT THE OUTSIDE EDGE OF THE 10 FT. PAVED SHOULDER AND THE CURB GUTTER LINE WITH A STRAIGHT GRADE

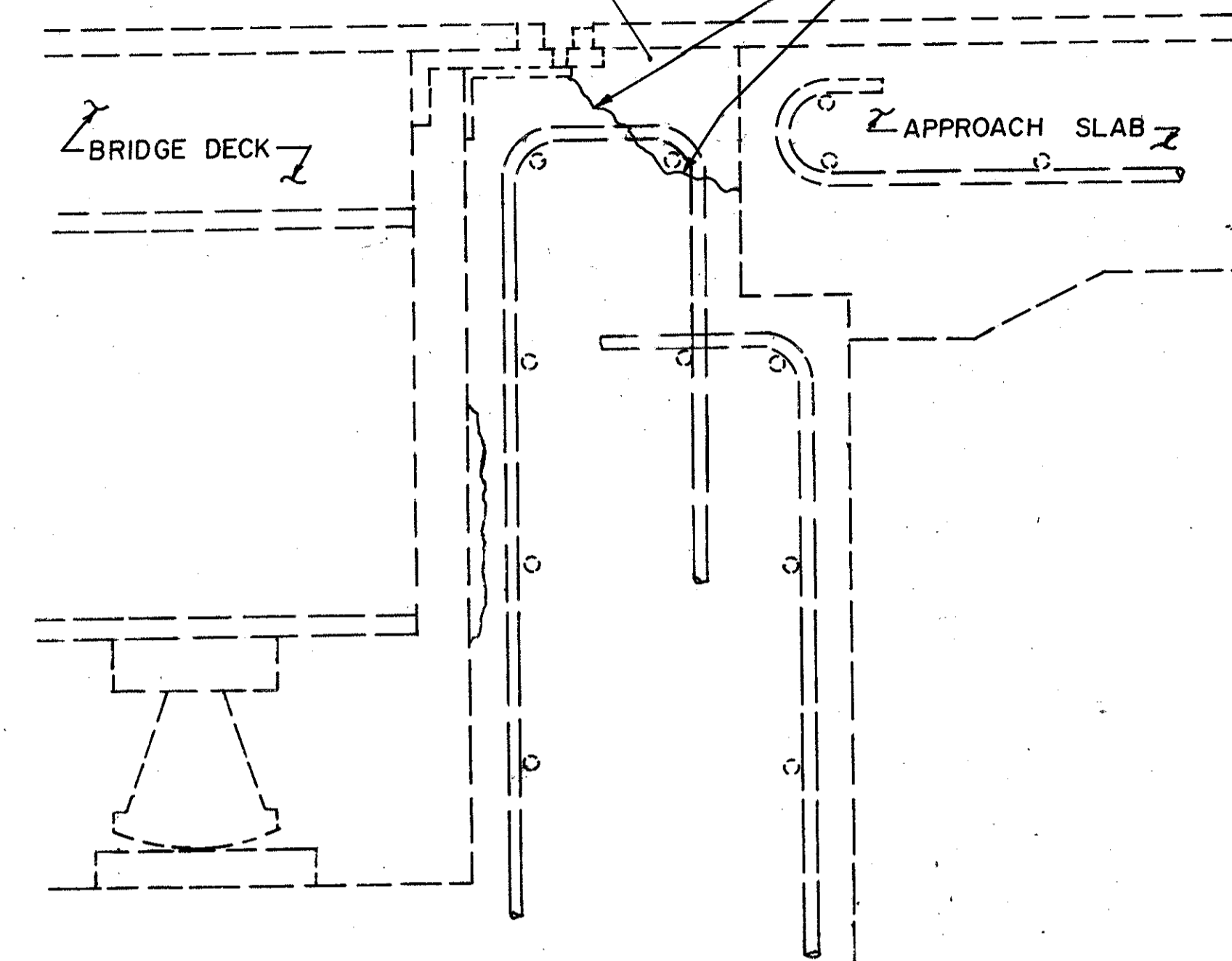
ESTIMATED QUANTITIES

RAMP No.	LOCATION		202	
	FROM	TO	CURB REMOVED AS PER PLAN	LIN. FT.
2	0+00	3+75		375
H	11+71.47	14+71.47	300	
E	4+59.82	1+59.82	300	
PARTICIPATION - TOTALS			975	

BACKWALL REPAIR QUANTITIES

ITEM	UNITS	TOTAL	BRIDGE No. LAK-44-0620
SPCL.	SQ. FT.	710	PATCHING CONCRETE STRUCTURES WITH SUPERIOR BONDING MATERIALS
SPCL.	SQ. YD.	2,029	SEALING OF CONCRETE SURFACES (EPOXY) (SEE PROPOSAL NOTE)

REMOVE EXISTING UNSOUND CONCRETE TO EDGE OF BACKWALL
 RANDOM CRACKING

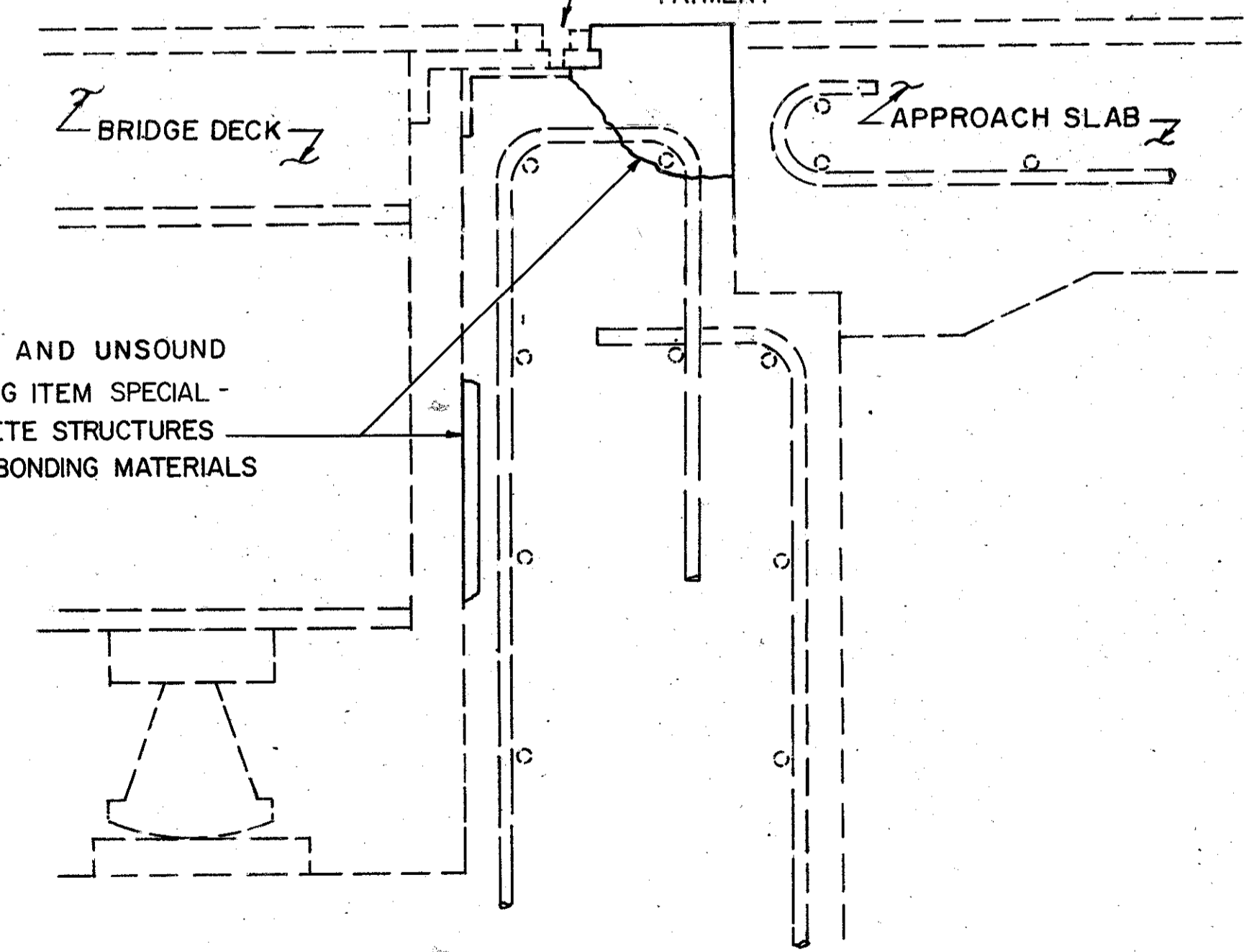


EXISTING BACKWALL
(STRUCTURE LAK-44-0620)

ALL REPAIRS SHALL BE AS DIRECTED BY THE ENGINEER.

ALL COSTS FOR CUTTING AND WELDING TO RESET JOINT (IF NECESSARY) ARE INCLUDED UNDER ITEM SPECIAL-PATCHING CONCRETE STRUCTURES WITH SUPERIOR BONDING MATERIALS FOR PAYMENT

REPAIR SPALLS AND UNSOUND CONCRETE USING ITEM SPECIAL-PATCHING CONCRETE STRUCTURES WITH SUPERIOR BONDING MATERIALS



PROPOSED BACKWALL REPAIR
(STRUCTURE LAK-44-0620)