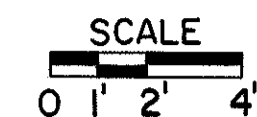


TYPICAL SECTIONS

TYPE OPEN GRADED 404



| | | |
|-------------|-------|---------|
| FHWA REGION | STATE | PROJECT |
| 5 | OHIO | |

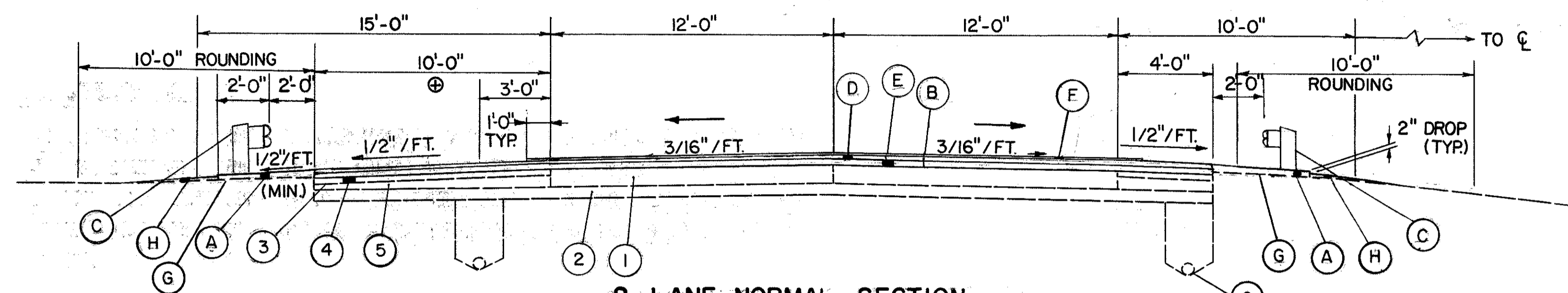
LAKE COUNTY
LAK-44-4.14

NOTES

TYPICAL SECTIONS ARE INTENDED TO SHOW THE GENERAL ROADWAY AND PAVEMENT FEATURES ONLY. FOR DETAILS, SEE THE PLAN SHEETS, DETAIL SHEETS AND CROSS SECTION SHEETS.

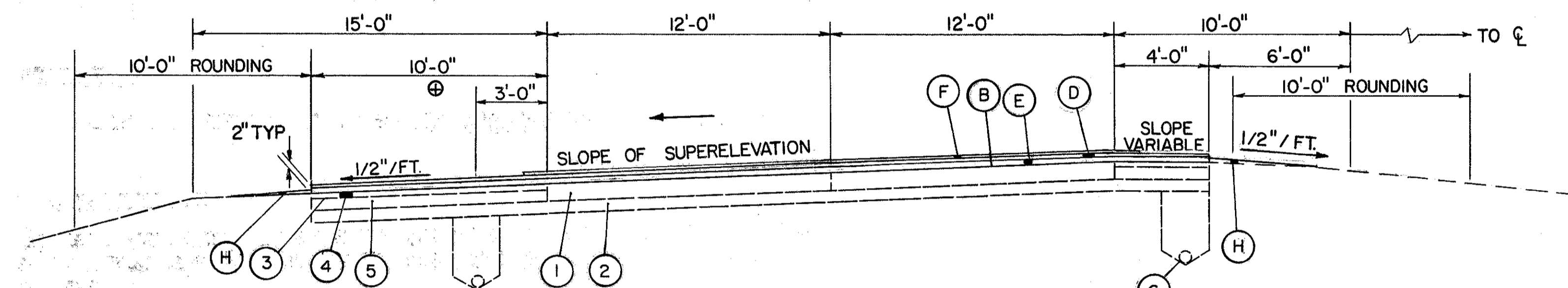
SPREADING EQUIPMENT: AN AUTOMATIC SCREED CONTROL HAVING A 40 FOOT SKI ARM SHALL BE USED FOR PLACING THE INTERMEDIATE COURSE (SEE PROPOSAL NOTE). FOR FULL WIDTH PAVING, THE WIDTH LAID SHALL NOT EXCEED THE PAVER'S RATED WIDTH AS RECOMMENDED BY THE PAVER MANUFACTURER.

LONGITUDINAL JOINTS: LONGITUDINAL JOINTS BETWEEN A PAVEMENT LANE AND ADJOINING BERM OR SPEED CHANGE LANE AND BETWEEN A SPEED CHANGE LANE AND THE ADJOINING BERM SHALL BE MADE THE SAME DAY. ALL LONGITUDINAL JOINTS SHALL BE HOT WITH THE EXCEPTION OF ONE COLD JOINT PER ROADWAY. LONGITUDINAL JOINT LOCATIONS SHALL BE AS APPROVED BY THE ENGINEER. EACH RAMP SHALL HAVE ONLY ONE LONGITUDINAL COLD JOINT LOCATED APPROXIMATELY HALFWAY ACROSS THE RAMP.



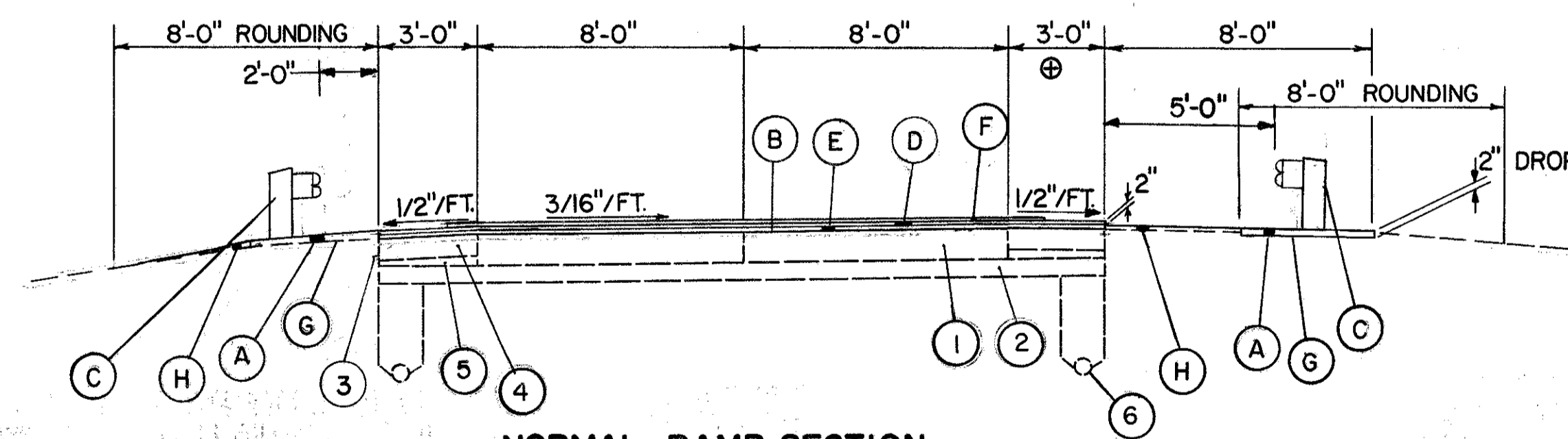
2 LANE NORMAL SECTION

STA. 237+10 NB/SB TO STA. 254+41.89 NB/SB RAMP E- STA. 31+00 NB TO STA. 43+42.51 NB
STA. 272+94.23 NB/SB TO STA. 301+77.35 NB/SB RAMP G- STA. 3+00 SB TO STA. 18+00 SB



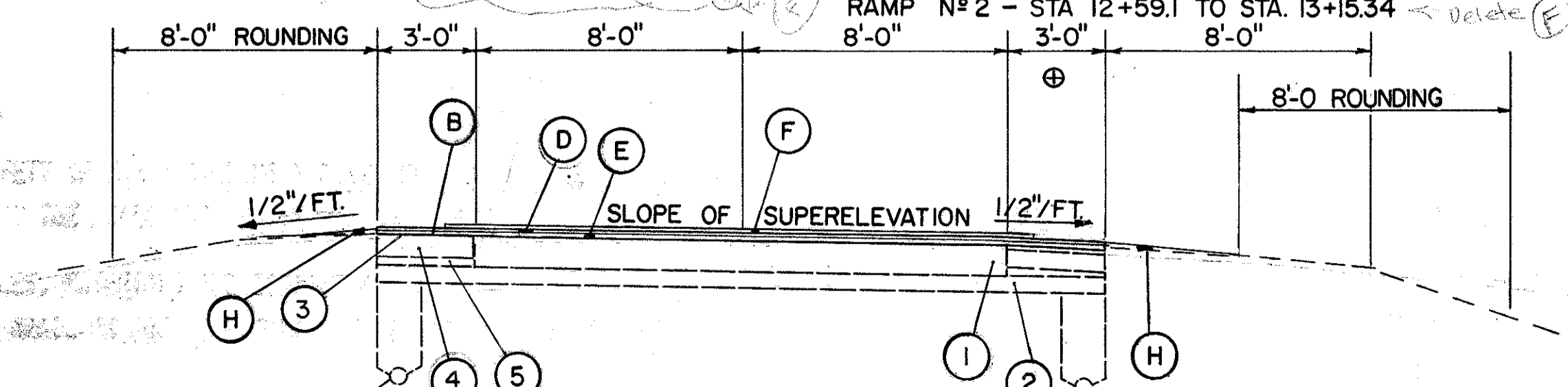
2 LANE SUPERELEVATED SECTION

STA. 254+41.89 NB/SB TO STA. 272+94.23 NB/SB RAMP E- STA. 43+42.51 NB TO STA. 45+84.63 NB
STA. 301+77.35 NB/SB TO STA. 308+94.33 NB/SB RAMP G- STA. 1+33.33 SB TO STA. 3+00 SB
RAMP G- STA. 18+00 SB TO STA. 20+65 SB



NORMAL RAMP SECTION

RAMP N° 1 - STA. 5+18.56 TO STA. 7+50 RAMP N° 2 - STA. 3+75 TO STA. 6+00
RAMP N° 1 - STA. 12+25 TO STA. 14+17.77 RAMP N° 2 - STA. 10+75 TO STA. 12+39.1
RAMP N° 2 - STA. 12+59.1 TO STA. 13+15.34



SUPERELEVATED RAMP SECTION

RAMP N° 1 - STA. 7+50 TO STA. 11+04.8
RAMP N° 1 - STA. 11+34.8 TO STA. 12+25
RAMP N° 2 - STA. 6+00 TO STA. 10+75

⊕ RIGHT HAND SHOULDER IN THE DIRECTION OF TRAFFIC

RAMP N° 2
STA 12+59.1 TO STA 13+15.34 AND
RAMP N° 1
STA 11+04.8 TO STA 14+17.77
DO NOT HAVE (F), ITEM SPECIAL, 3/4" OPEN GRADED ASPHALT ON THE ROADWAY

LEGEND

EXISTING

- ① 9" REINFORCED PORTLAND CEMENT CONCRETE PAVEMENT
- ② SUBBASE
- ③ BITUMINOUS SURFACE TREATMENT
- ④ WATERPROOFED AGGREGATE BASE COURSE
- ⑤ POROUS BASE COURSE
- ⑥ UNDERDRAIN

PROPOSED

- (A) ITEM 301 3" BITUMINOUS AGGREGATE BASE, AS PER PLAN, AC-20, RT-11, OR RT-12
- (B) ITEM 407 TACK COAT AND COVER AGGREGATE (SEE GENERAL NOTES)
- (C) ITEM 606 GUARD RAIL, TYPE 5
- (D) ITEM 848 1 1/4" ASPHALT CONCRETE SURFACE COURSE, TYPE 1, AC-20
- (E) ITEM 848 1 3/4" ASPHALT CONCRETE INTERMEDIATE COURSE, TYPE 2 (1 3/4" AVG.), AC-20
- (F) ITEM SPCL. 3/4" OPEN GRADED ASPHALT (SEE NOTE IN PROPOSAL)
- (G) ITEM SPCL. HERBICIDES FOR WEED CONTROL
- (H) ITEM 203 LINEAR GRADING (TO BE USED ON ALL SHOULDERS)