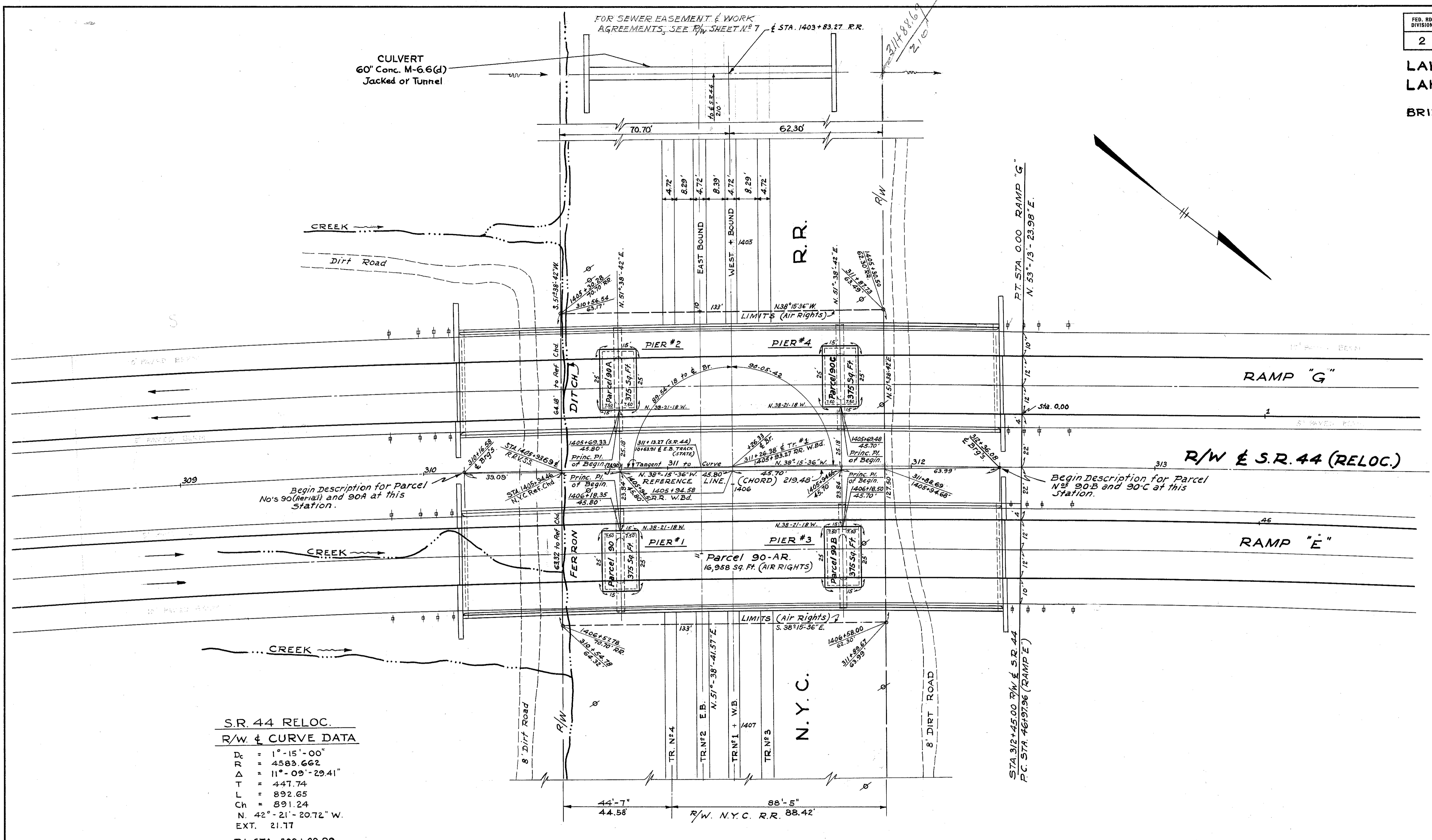


LAKE COUNTY  
LAK - 44 - 3.79

BRIDGE N° LAK. 44 - 0556

R/W (7A)



**S.R. 44 RELOC.**  
**R/W & CURVE DATA**

$D_c = 1^\circ - 15' - 00''$   
 $R = 4583.662$   
 $\Delta = 11^\circ - 09' - 29.41''$   
 $T = 447.74$   
 $L = 892.65$   
 $Ch = 891.24$   
 $N. 42^\circ - 21' - 20.72'' W.$   
 $EXT. 21.77$

$P.I. = STA. 308 + 00.09$   
 $P.C. = STA. 303 + 52.35$   
 $P.T. = STA. 312 + 45.00$

**NOTE :-** RIGHT-OF-WAY DESCRIPTIONS FOR PIER FOOTINGS TIED IN WITH R/W & REFERENCE CHORD DIMENSIONS SHOWN ARE 1 FOOT BEYOND PIER FOOTINGS.

SCALE :- 1" = 20'

**NOTE:** R.R.V.S.S. DENOTES RAILROAD VALUATION SURVEY STATION

COMPLETED		2-20-62
DATE	REVISIONS	