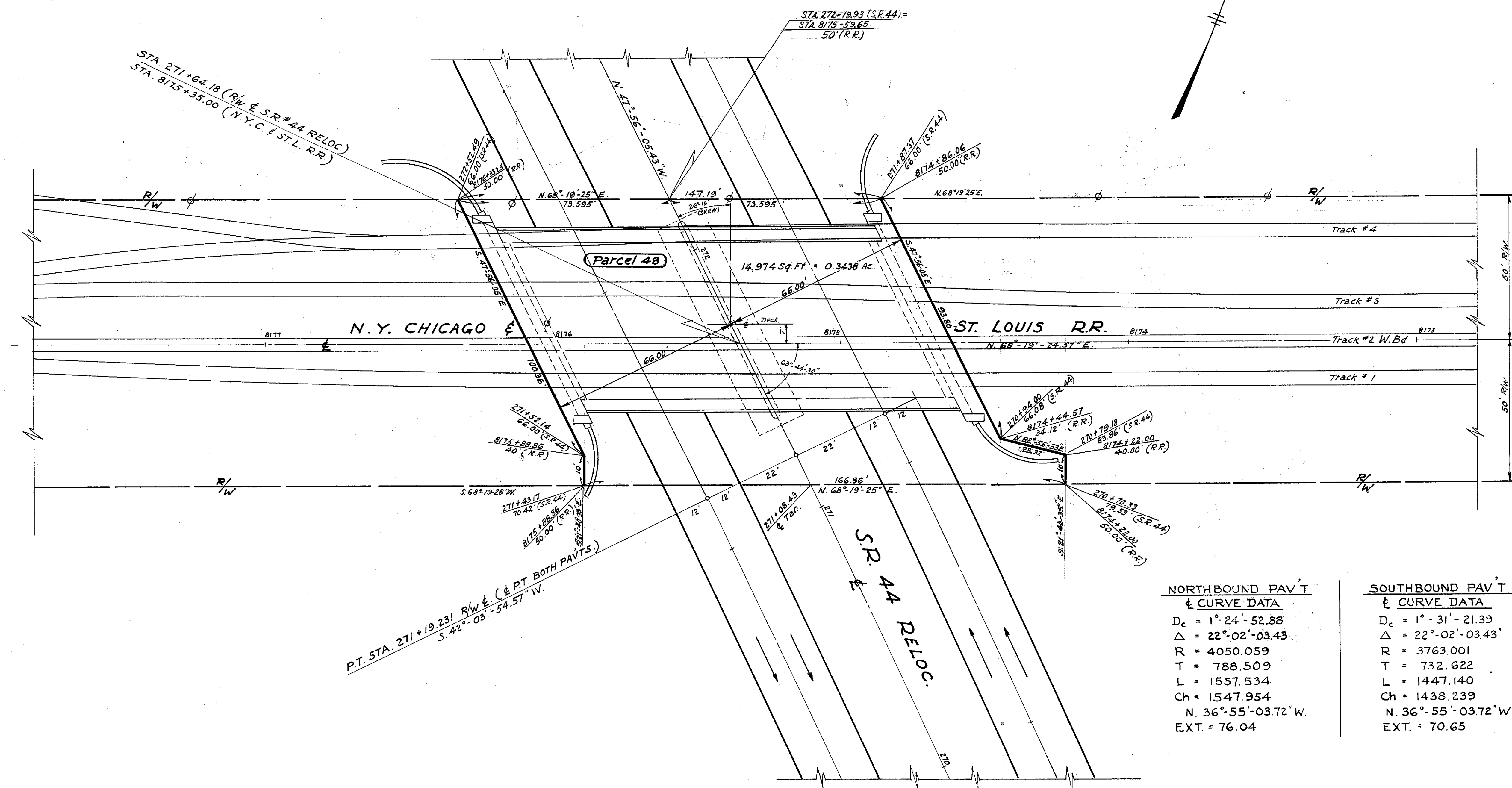


LAKE COUNTY
LAK. - 44 - 3.79
BRIDGE N° LAK-44-0483

R/W 4-A



NORTHBOUND PAV'T & CURVE DATA

$D_c = 1^\circ - 24' - 52.88''$
 $\Delta = 22^\circ - 02' - 03.43''$
 $R = 4050.059$
 $T = 788.509$
 $L = 1557.534$
 $Ch = 1547.954$
 $N. 36^\circ - 55' - 03.72'' W.$
 $EXT. = 76.04$

SOUTHBOUND PAV'T & CURVE DATA

$D_c = 1^\circ - 31' - 21.39''$
 $\Delta = 22^\circ - 02' - 03.43''$
 $R = 3763.001$
 $T = 732.622$
 $L = 1447.140$
 $Ch = 1438.239$
 $N. 36^\circ - 55' - 03.72'' W.$
 $EXT. = 70.65$

SR. N° 44 RELOC. R/W & CURVE DATA

$D^\circ = 1^\circ - 28' - 00''$
 $\Delta = 22^\circ - 02' - 03.43''$
 $R = 3906.53$
 $T = 760.566$
 $L = 1502.337$
 $Ch = 1493.097$
 $N. 36^\circ - 55' - 03.72'' W$
 $EXT. = 73.349$

Scale :- 1" = 20'

| COMPLETED | | 2-20-62 |
|-----------|-----------|---------|
| DATE | REVISIONS | |
| | | |
| | | |
| | | |
| | | |
| | | |
| | | |
| | | |
| | | |
| | | |
| | | |