

CONCORD TOWNSHIP
LOT 48 TRACT 4

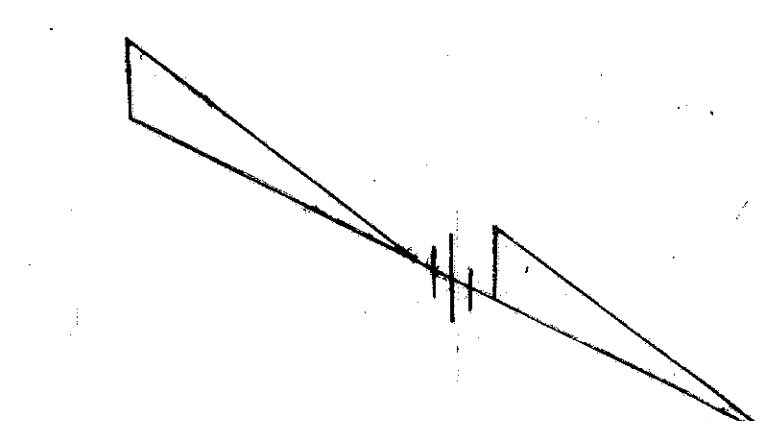
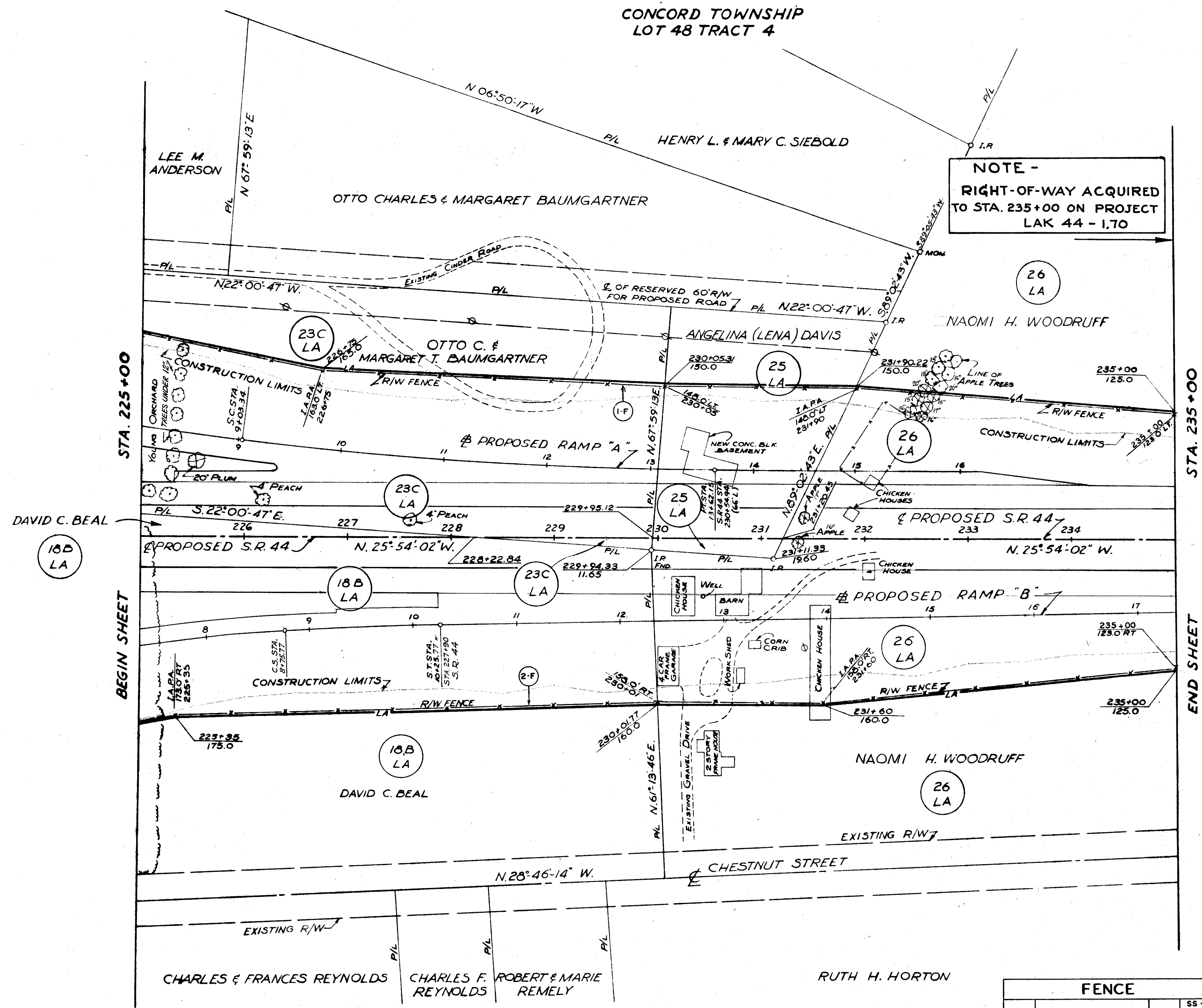
FED RD DIVISION	STATE	PROJECT
2	OHIO	

195
204

LAKE COUNTY
LAK-44-3.79

R/W ②

NOTE -
RIGHT-OF-WAY ACQUIRED
TO STA. 235+00 ON PROJECT
LAK 44 - 1.70



COMPLETED		2-20-62
DATE	REVISIONS	

TRYGVE HOFF & ASSOCIATES
ENGINEERS
1922 EAST 107TH STREET CLEVELAND, OHIO

R/W PLAN
STA. 225+00 TO STA. 235+00

REF. NO.	STATION		SIDE	SS-18 FENCE TYPE "C"
	FROM	TO		
1-F	225+00	235+00	LT.	1005
2-F	225+00	235+00	RT.	1006
TOTAL (U-388(12) RURAL)				2011

DESIGNED	DRAWN	TRACED	CHECKED	REVIEWED	DATE
AS	AS		GH	T.L.L.	10/1/58