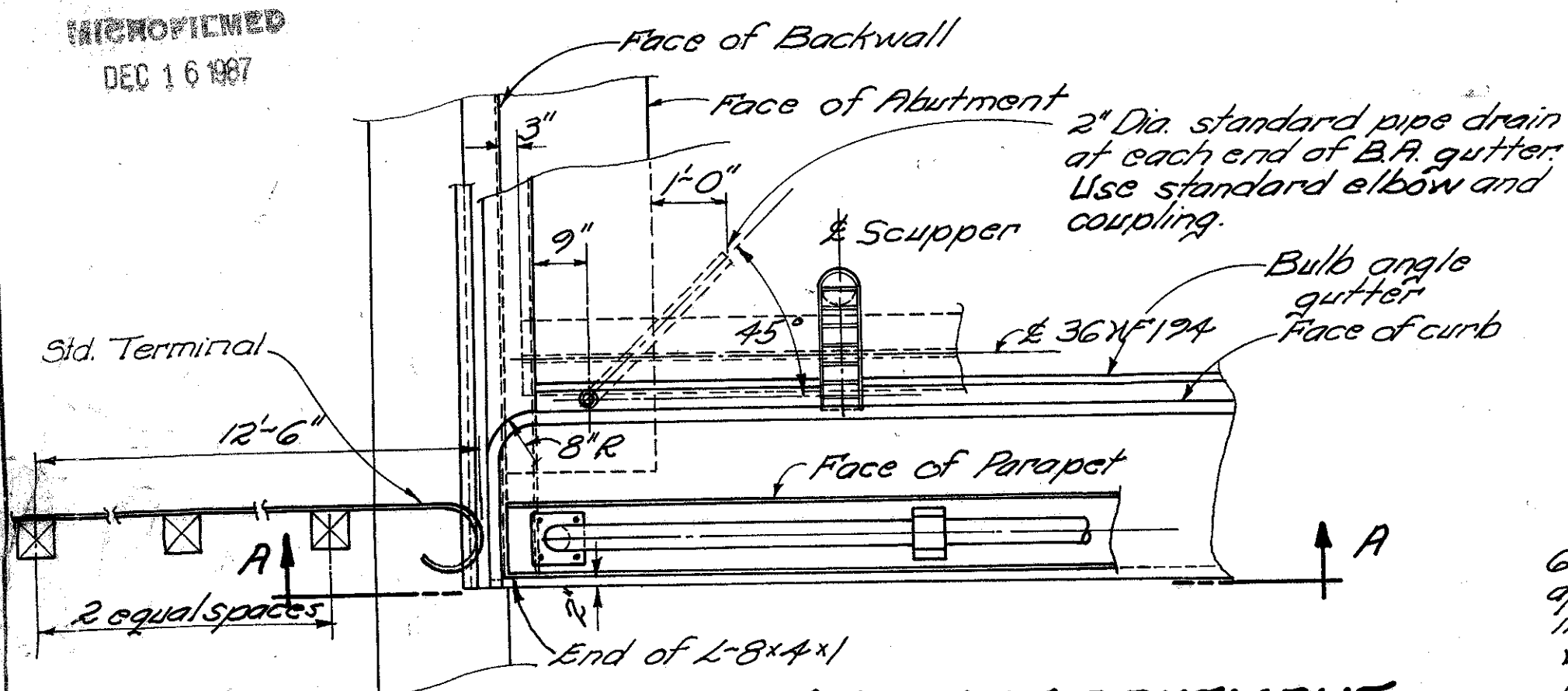


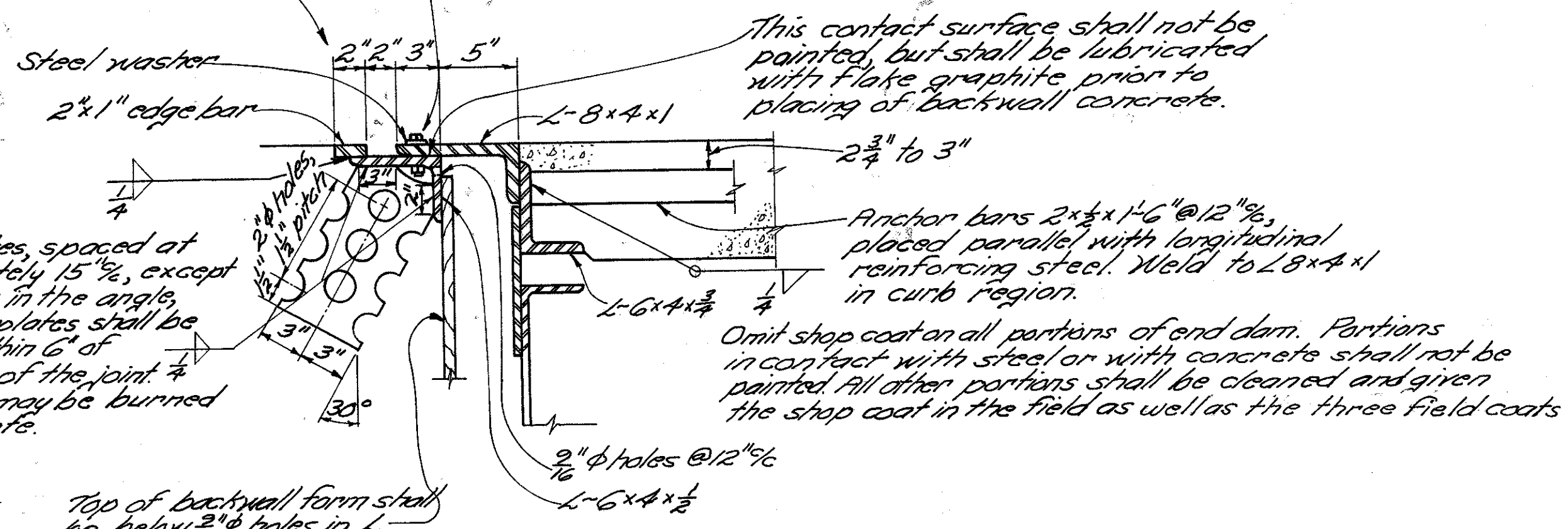
REPRODUCTION
DEC 16 1987



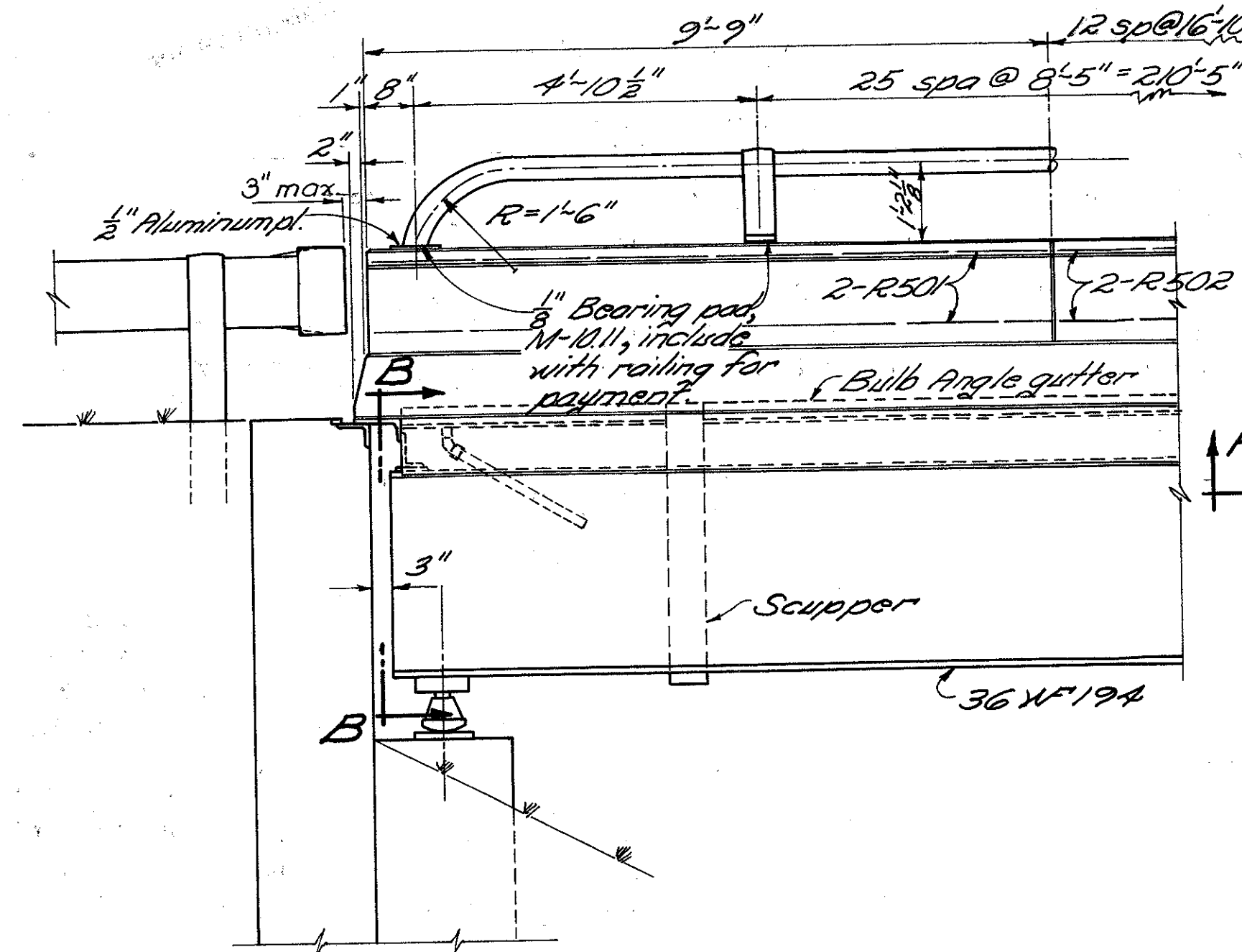
PART PLAN AT ABUTMENT

Joints may be provided in the edge bar and in the $6 \times 4 \times \frac{1}{2}$ L at a minimum spacing of 6'-0". (Joints shall not be welded.)

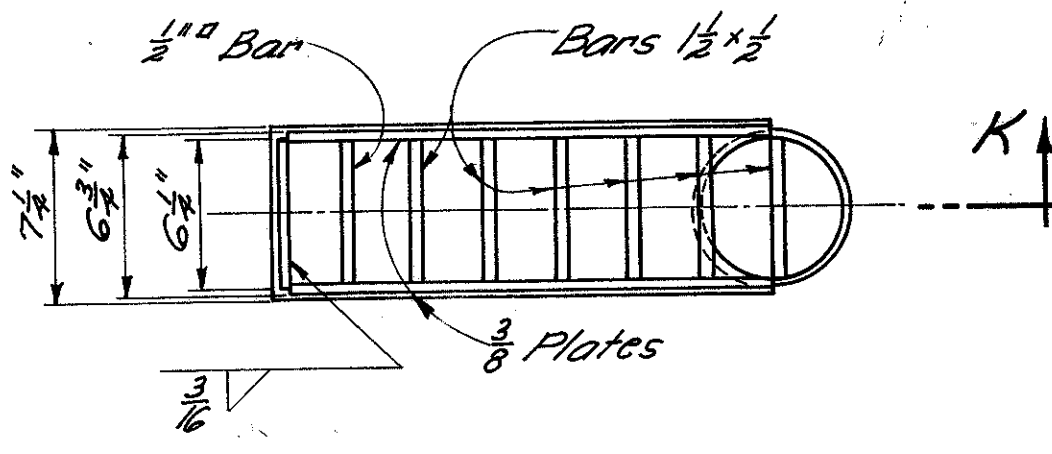
$\frac{5}{8} \times 2$ " bolts at not more than 2'-0", with nuts tack welded to under side of lower angle. $1\frac{1}{2}$ " holes in upper angle. Center $\frac{5}{8}$ " bolts in $1\frac{1}{2}$ " holes. Apply flake graphite between washers and angle. Turn bolt tight and release $\frac{1}{2}$ turn. Remove bolts as soon as concrete has set, preferably within two hours, to avoid effect of temperature expansion or contraction of superstructure. Fill holes with bituminous materials.



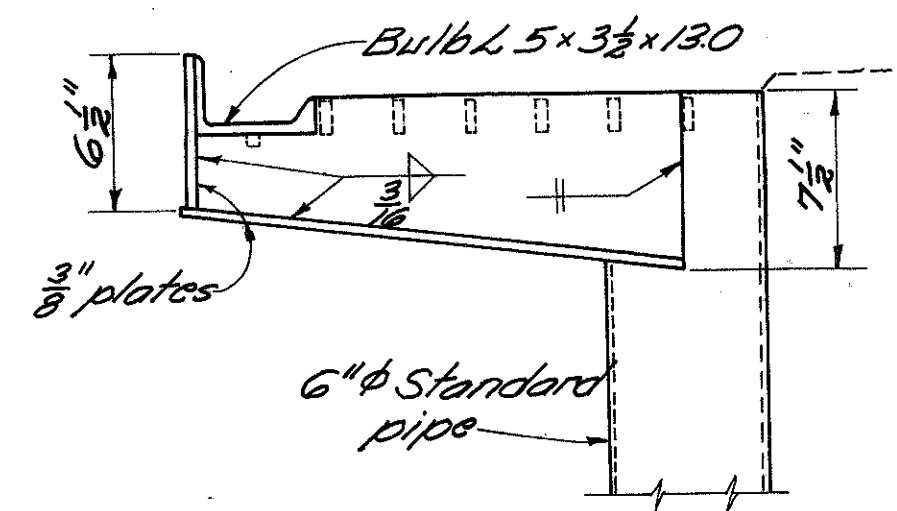
SECTION C-C



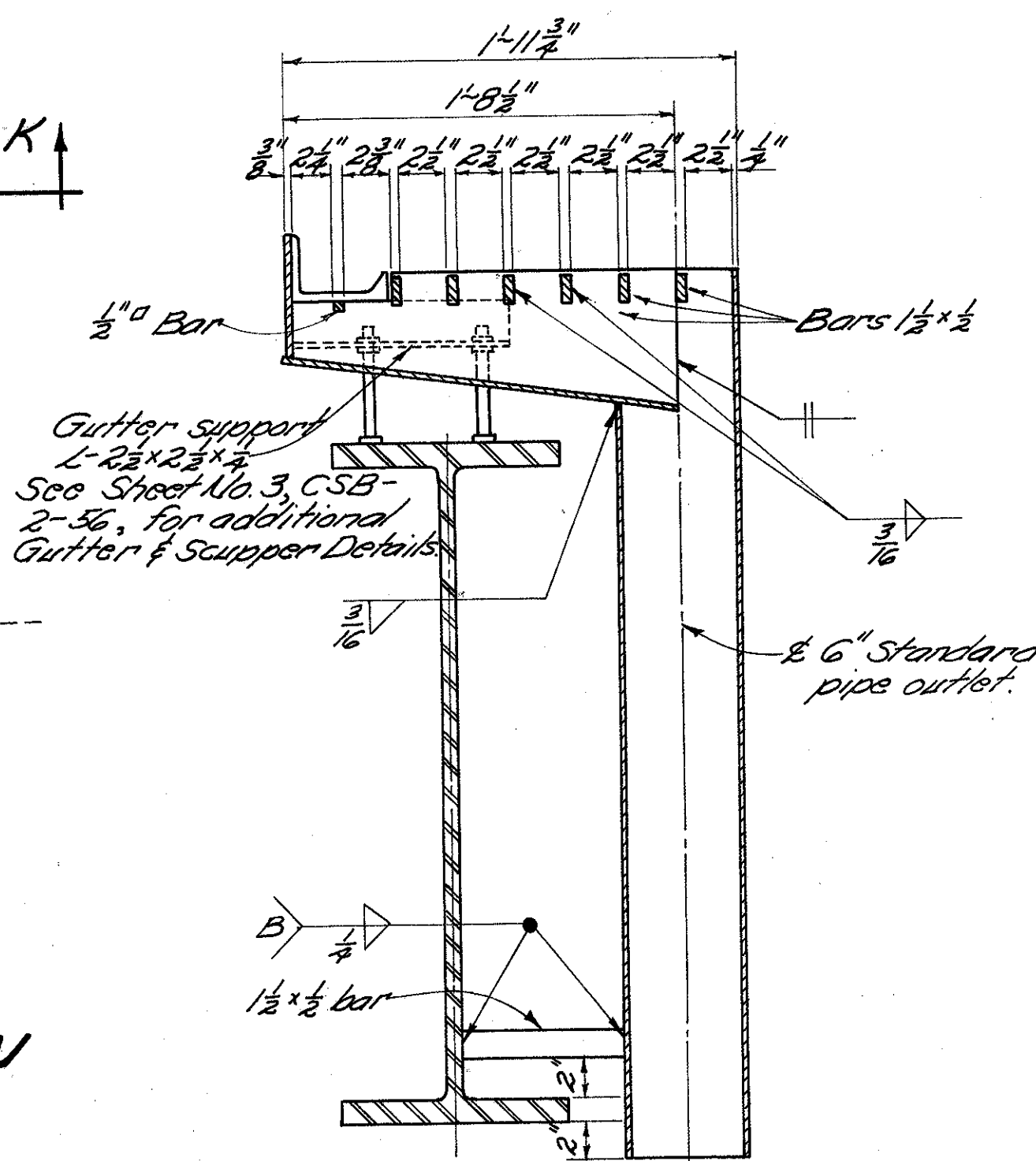
SECTION A-A



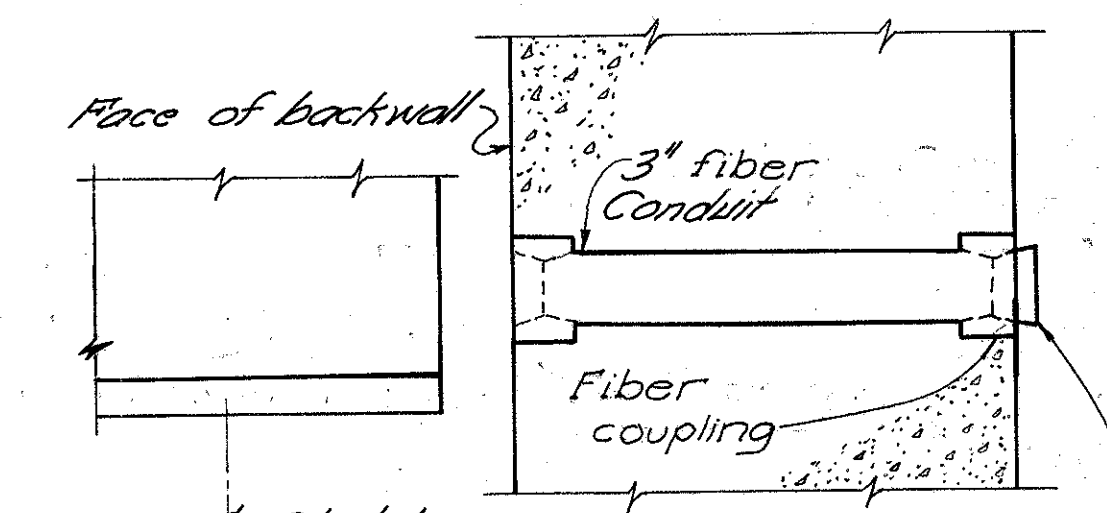
SCUPPER PLAN



SCUPPER ELEVATION

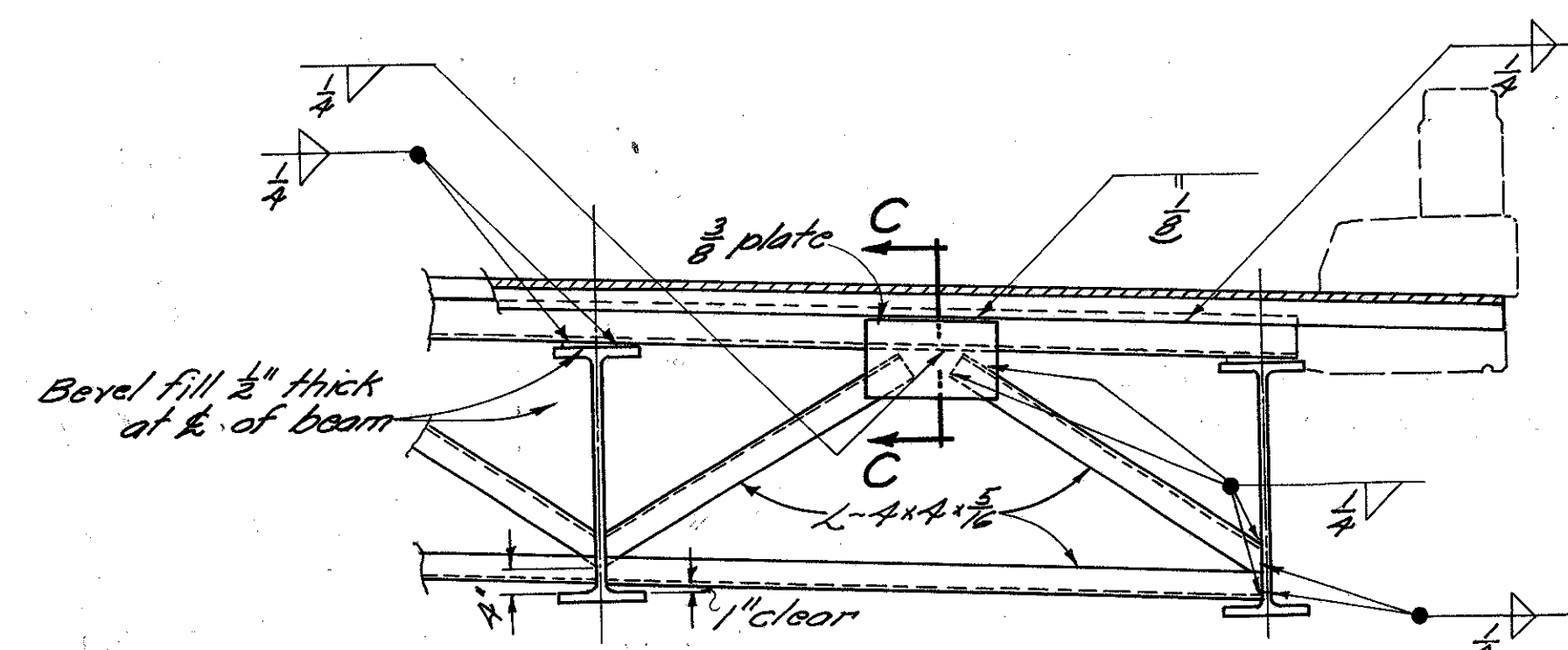


SECTION K-K



CONDUIT DETAILS

Conduit, couplings and plugs included with Item 5-25, 'Electric grounding system' for payment.



SECTION B-B

For additional "Gutter and Scupper Details" refer to Sheet 3, CSB-2-56

STATE OF OHIO DEPARTMENT OF HIGHWAYS DIVISION OF DESIGN AND CONSTRUCTION BUREAU OF BRIDGES						
SUPERSTRUCTURE DETAILS						
BRIDGE No. LAK-44-0556 L&R OVER NYC RR						
LAKES COUNTY						
STA 310+14.33 312+38.33						
DESIGNED	DRAWN	TRACED	CHECKED	REVIEWED	DATE	REVISED
CPD	CPD	Neelan	Ray	BFG	3/16-67	6-7-61