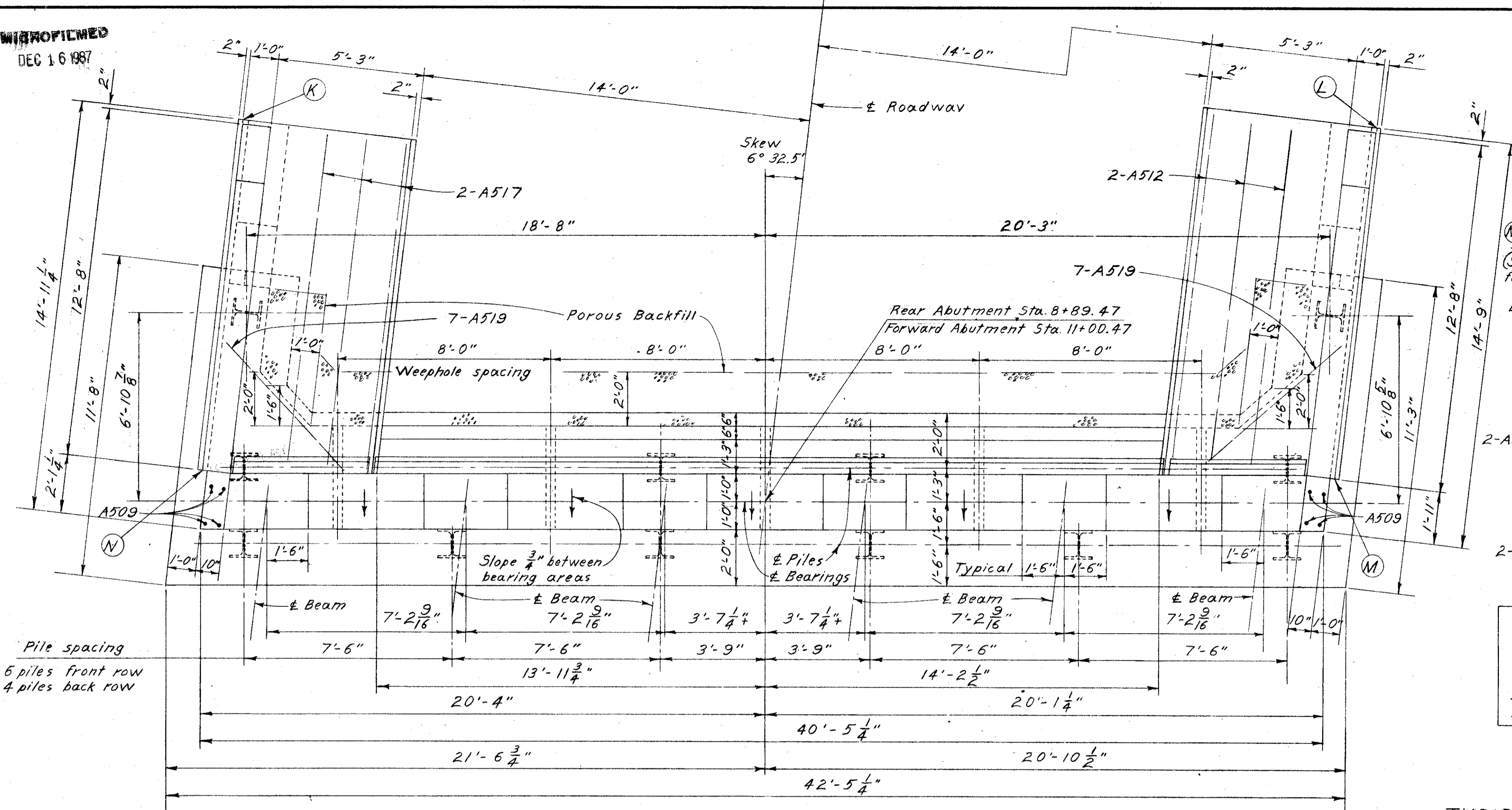
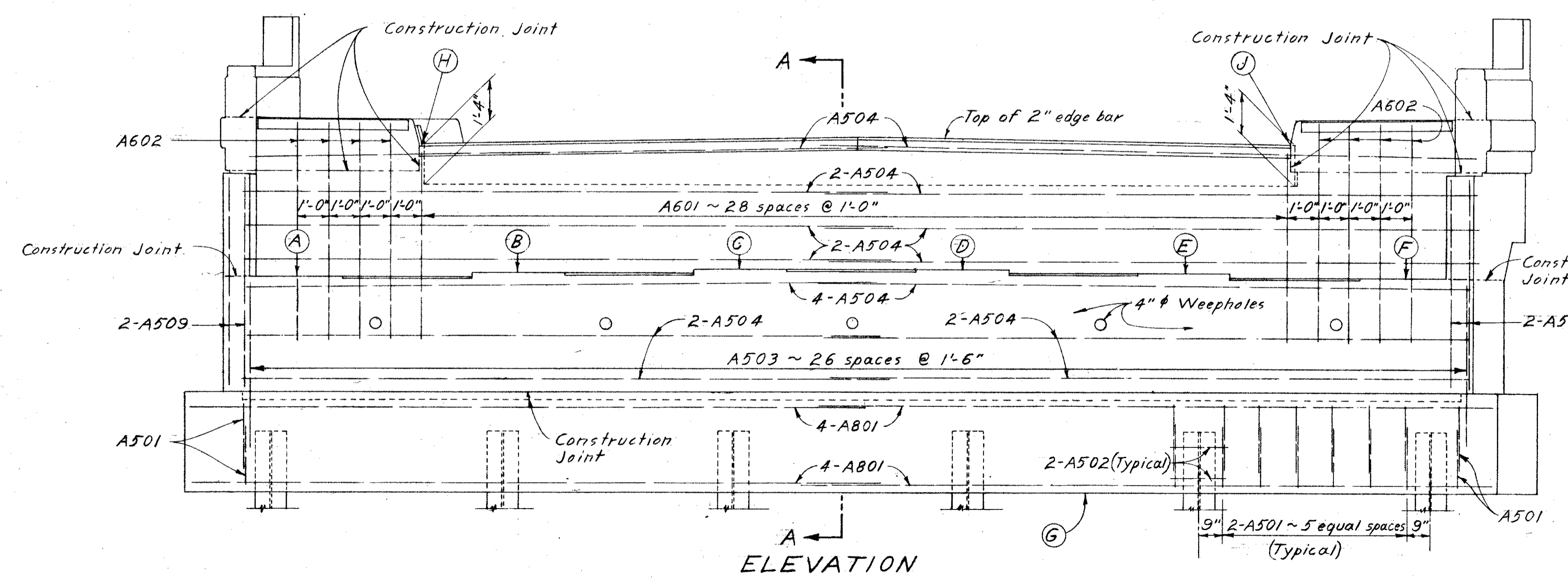


WIDENFILMED
DEC 16 1987

FED. NO. DIVISION	STATE	PROJECT	
2	OHIO	LAK-44-3.79	(181/204)



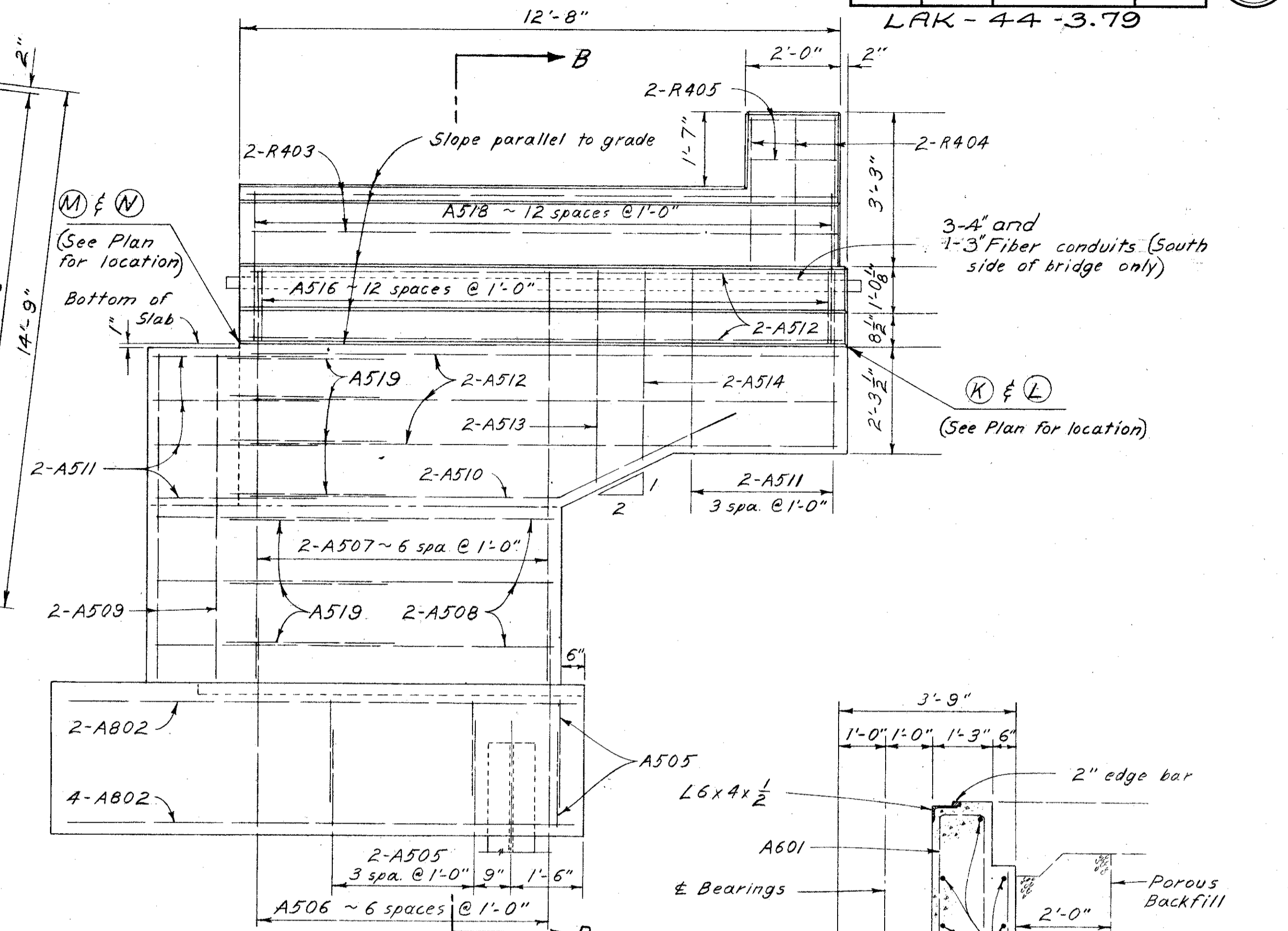
PLAN
Forward abutment shown



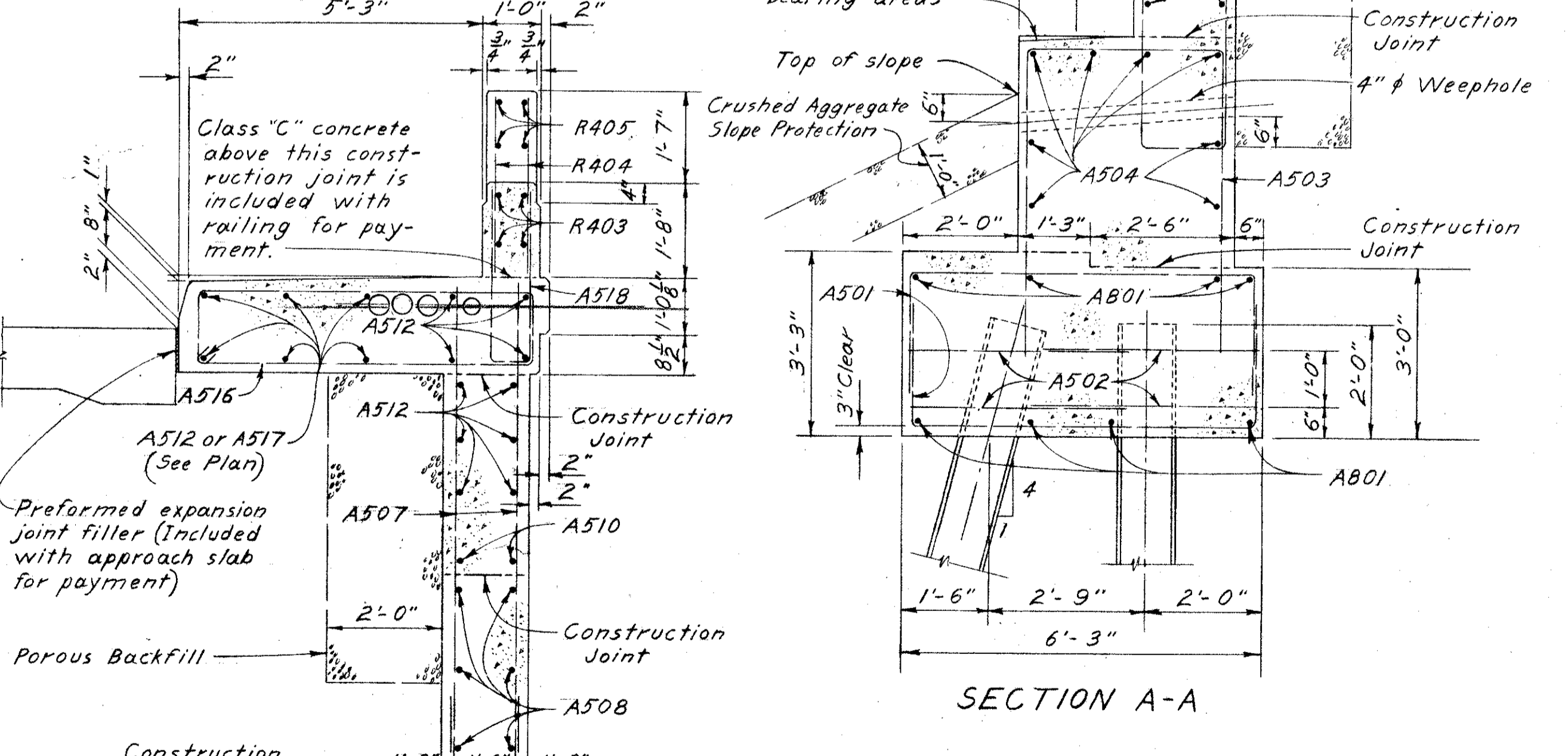
ELEVATION

	A	B	C	D	E	F	G	H	J	K	L	M	N
Rear Abutment	668.80	668.91	669.01	669.01	668.89	668.77	661.60	673.10	673.08	672.23	672.20	672.28	672.30
Forward Abutment	669.13	669.24	669.35	669.35	669.23	669.11	662.00	673.44	673.42	672.57	672.54	672.62	672.64

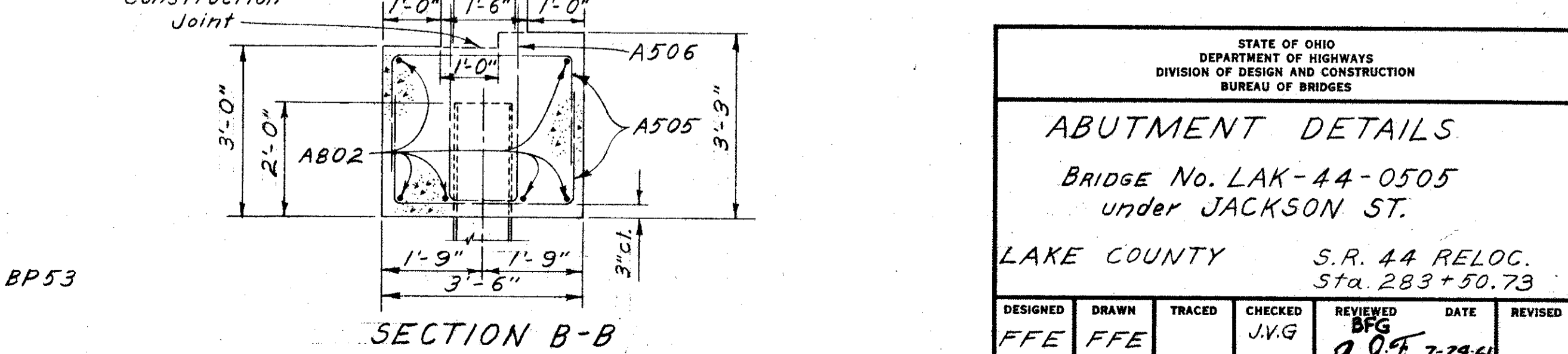
NOTE: All piles 12BP53



TYPICAL WINGWALL ELEVATION



SECTION A-A



SECTION B-B

STATE OF OHIO
DEPARTMENT OF HIGHWAYS
DIVISION OF DESIGN AND CONSTRUCTION
BUREAU OF BRIDGES

ABUTMENT DETAILS
BRIDGE No. LAK-44-0505
under JACKSON ST.

LAKE COUNTY S.R. 44 RELOC.
Sta. 283+50.73

DESIGNED	DRAWN	TRACED	CHECKED	REVIEWED	DATE	REVISED
FFE	FFE		J.V.G.	B.F.C.	7-29-61	