

MICROFILMED
DEC 15 1987

LAK-44-3.79

DESIGN DATA

SPECIFICATION AREA 1960
LOADING Cooper E-72 (diesels only)
SPANS 2 @ 66'-4" % bearings (Continuous)
GIRDER SPACING 3'-6" %
DEAD LOAD/GIRDER Track, ballast, deck slab and waterproofing = 1360 #/l
 Steel (including diaphragms) = 350 #/l
 Total = 1710 #/l

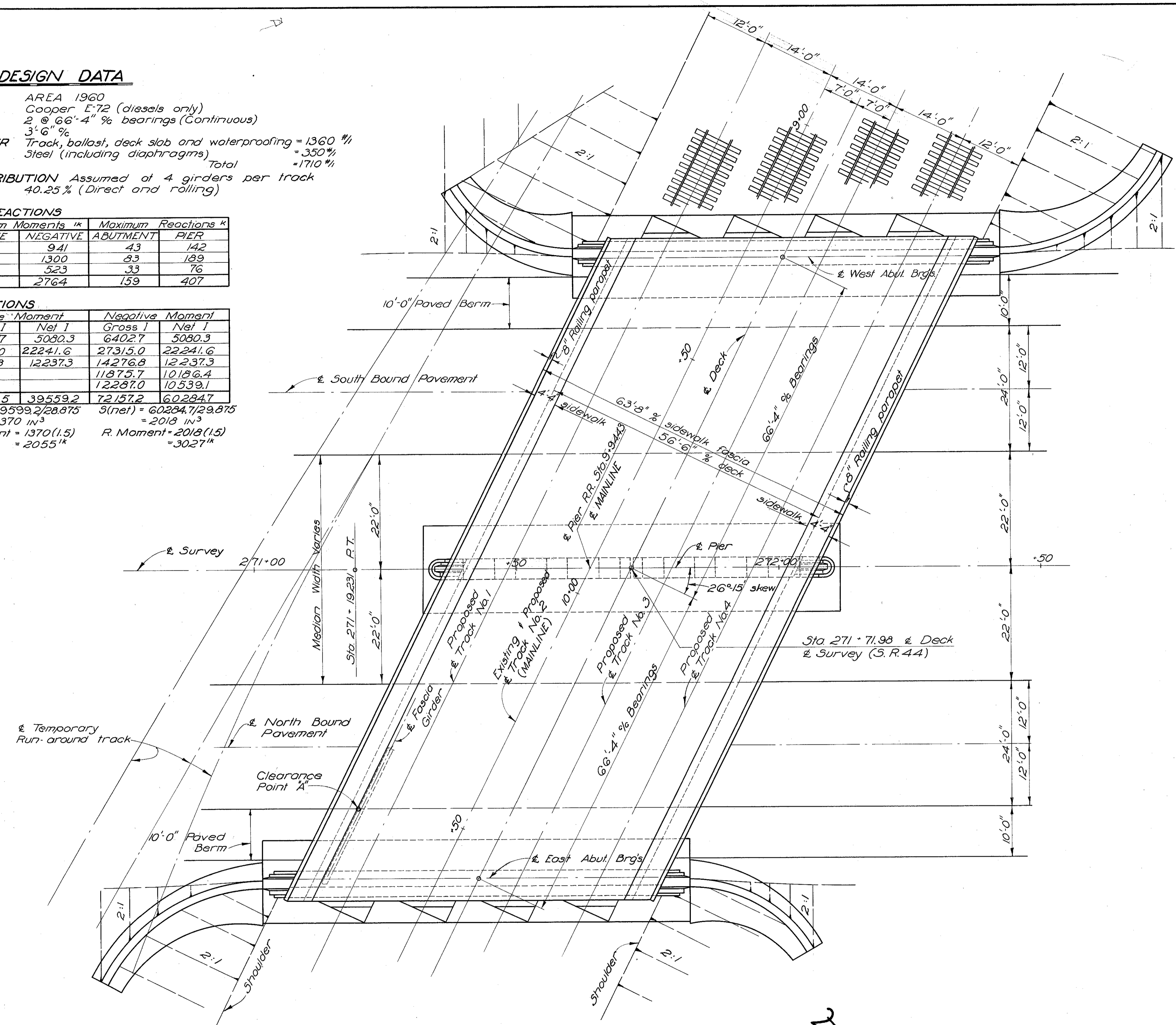
LIVE LOAD DISTRIBUTION Assumed at 4 girders per track
IMPACT 40.25% (Direct and rolling)

MOMENTS AND REACTIONS

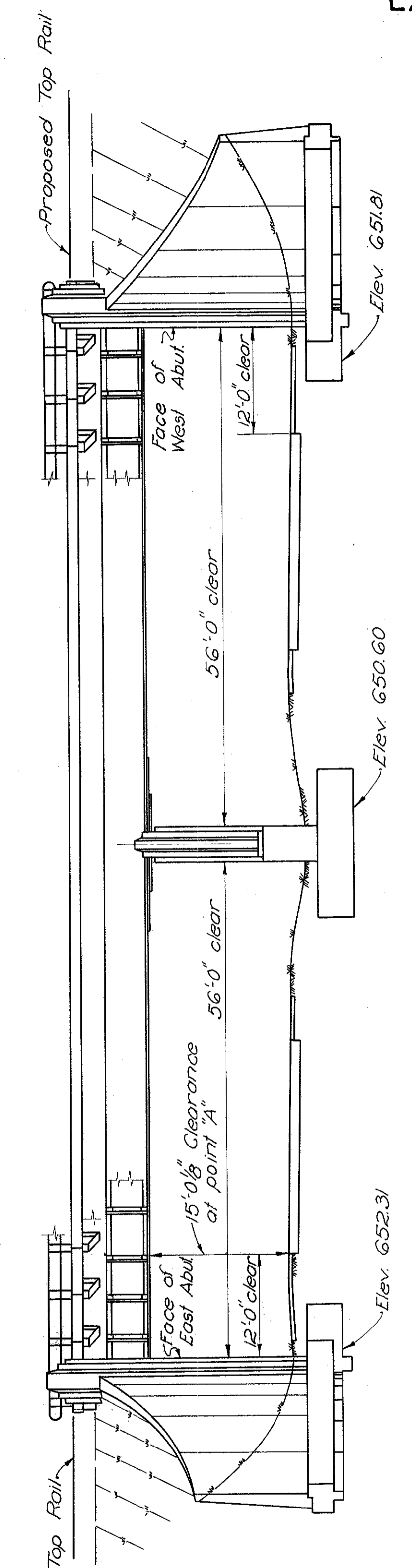
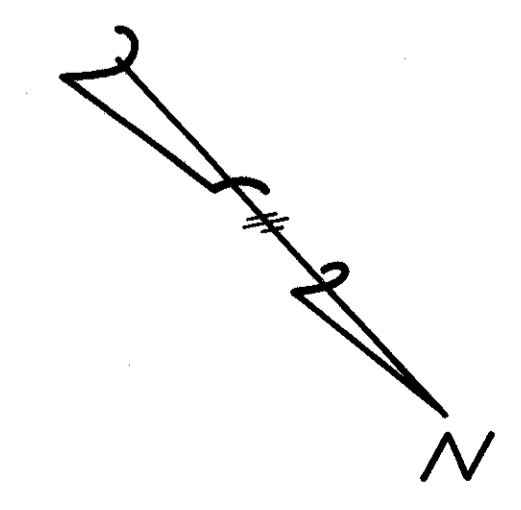
	Maximum Moments ^{1k}		Maximum Reactions ^{1k}	
	POSITIVE	NEGATIVE	ABUTMENT	PIER
Dead Load	511	941	43	142
Live Load	1030	1300	83	139
Impact	414	523	33	76
Total	1955	2764	159	407

PROPOSED SECTIONS

Proposed Section	Positive Moment		Negative Moment	
	Gross I	Net I	Gross I	Net I
Web 56" x 1/16"	6402.7	5080.3	6402.7	5080.3
4Ls 6" x 6" x 1/8"	27315.0	22241.6	27315.0	22241.6
2Rs 14" x 9/16"	14276.8	12237.3	14276.8	12237.3
2Rs 14" x 1/2"			11875.7	10186.4
2Rs 14" x 1/2"			12287.0	10539.1
Total	47994.5	39559.2	72157.2	60284.7
S(net) = 39599.2/28.875 = 1370 in ³		S(net) = 60284.7/29.875 = 2018 in ³		
R. Moment = 1370(1.5) = 2055 ^{1k}		R. Moment = 2018(1.5) = 3027 ^{1k}		



GENERAL PLAN



ELEVATION

STATE OF OHIO
DEPARTMENT OF HIGHWAYS
DIVISION OF DESIGN AND CONSTRUCTION
BUREAU OF BRIDGES

GENERAL PLAN, ELEVATION AND DESIGN DATA
 BRIDGE No. LAK-44-0483
 UNDER N.Y.C. & ST. L. R.R.

LAKE COUNTY Sta. 271+64.18

DESIGNED MPB RLM	DRAWN MPB	TRACED G.P.G.	CHECKED WCK	REVIEWED BFG	DATE 9/8/88	REVISED
------------------------	--------------	------------------	----------------	-----------------	----------------	---------