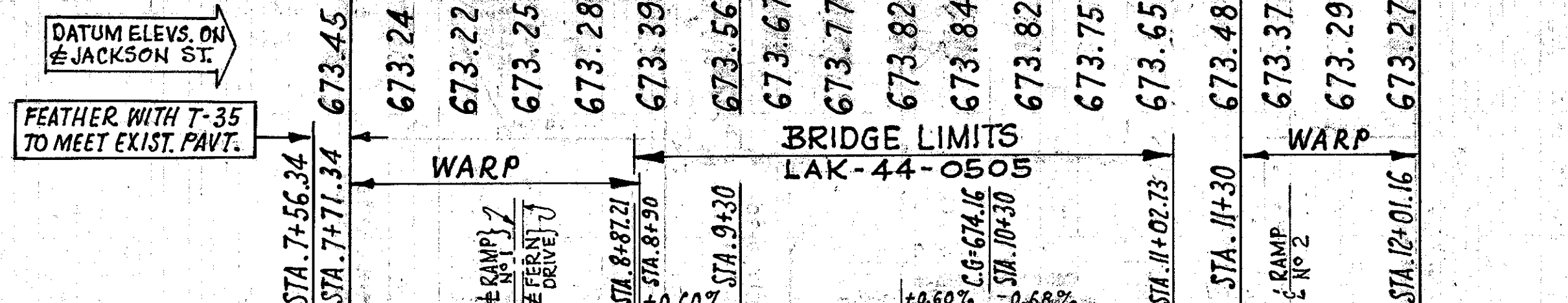
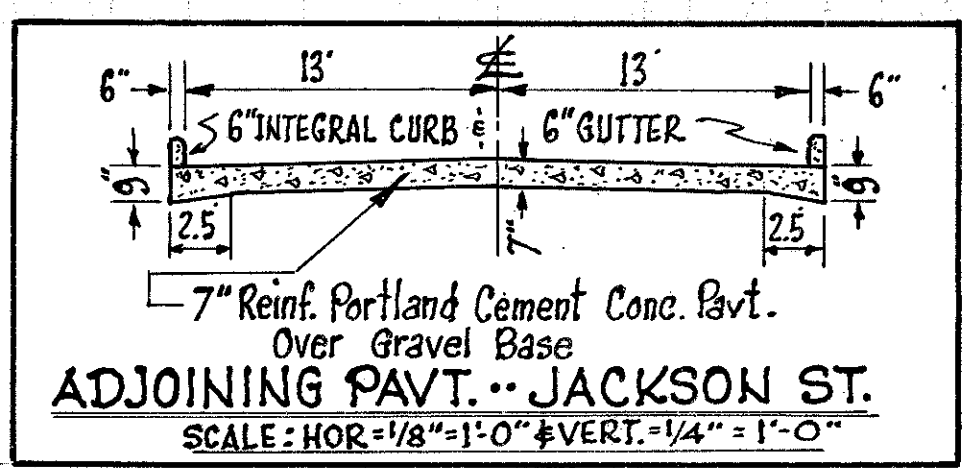
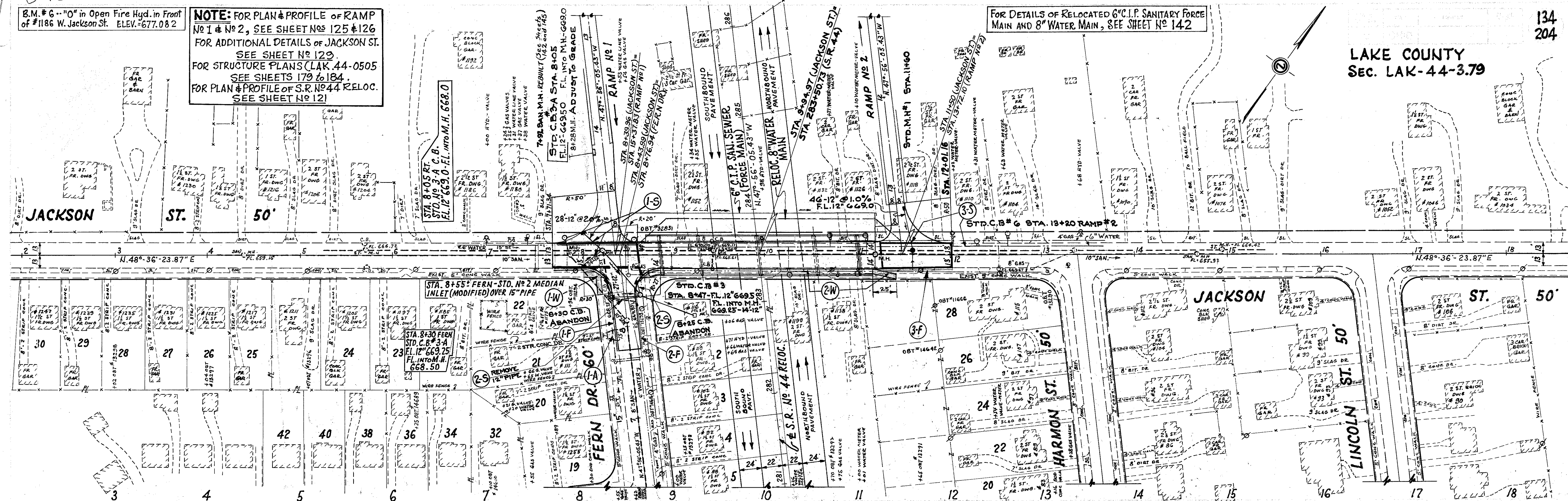


G-15  
L-11  
B.M. # 6 - "O" in Open Fire Hyd. in Front of #1186 W. Jackson St. ELEV.=677.082

**NOTE:** FOR PLAN & PROFILE OF RAMP No 1 & No 2, SEE SHEET Nos 125 & 126 FOR ADDITIONAL DETAILS OF JACKSON ST. SEE SHEET No 129 FOR STRUCTURE PLANS (LAK. 44-0505 SEE SHEETS 179 to 184 FOR PLAN & PROFILE OF S.R. No 44 RELOC. SEE SHEET No 121

LAKE COUNTY  
SEC. LAK-44-3.79

134  
204



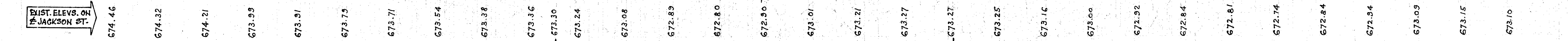
DRIVEWAYS				
Ref. No.	Station	SIDE R OR L	ITEM E-1	ITEM T-70
			EXCAVATION METHOD "B" CU. YDS.	8" PORTLAND CONCRETE SQ. YDS.
U-388(2) MUNICIPAL	1-A 7+94 (FERN)	L	2.4	12
<b>TOTAL</b>			<b>2.4</b>	<b>12</b>

SIDEWALK				
Ref. No.	Station	SIDE R OR L	ITEM E-8	ITEM T-13
			REMOVAL & DISPOSAL OF EXIST. WALK SQ. FT.	4" CONC. WALK SQ. FT.
U-388(2) MUNICIPAL	1-W JACKSON 8+05	R	215	195
	2-W 8+67	R	1380	150
<b>TOTAL</b>			<b>1595</b>	<b>345</b>

UNDERDRAINS				
Ref. No.	Station	ITEM I-1 LIN. FT.		
		6" Class I-3 SHALLOW	6" Class A-1 M-6.6 (b) M-6.8 (b)	6" Tee
U-388(2) MUNICIPAL	1-F 7+74	132		
	2-F 7+75 FERN 8+88	36		
	3-F 11+02	96	18	1
<b>TOTAL</b>		<b>324</b>	<b>18</b>	<b>1</b>

**PROPOSED STRUCTURE**  
TYPE: Continuous steel beams with reinf. concrete deck and substructure.  
SPANS: 43.5'-62'-62'-43.5' /c brgs.  
ROADWAY: 28'-0" /t/f 5'-3" sidewalks  
LOAD FREQUENCY: CF-400 (S7)  
SKEW: 6'-32.5' R.F.  
WEARING SURFACE: 1" monolithic concrete  
APPROACH SLABS: AS-1-54 (25' Long) Special  
ALIGNMENT: Tangent

DRAINAGE										
Ref. No.	Station		ITEM I-1 LIN. FT.		ITEM I-8 EACH				ITEM I-16 EACH	
	FROM	TO	12" CLASS A-1 SEC. M-6.6(a) OR M-6.8(b)	12" CLASS E-1	STANDARD C.B. No 3-A	STANDARD C.B. No 3-B	STANDARD MANHOLE No 1	STORM M.H. ADJUSTED TO GRADE	CATCH BASIN ABANDONED	PIPE REMOVED 15" UNDER
1-S	8+55 FERN	RAMP No 1	52		2		1			
2-S	8+26 FERN	8+47 FERN	27	14	1	1			2	30
3-S	11+60 JACKSON	13+20 RAMP No 2	46				1			
<b>TOTAL (U-388(2) MUNICIPAL)</b>			<b>125</b>	<b>14</b>	<b>3</b>	<b>1</b>	<b>1</b>	<b>1</b>	<b>2</b>	<b>30</b>



PLAN & PROFILE JACKSON STREET STA. 3+00 to STA. 18+00