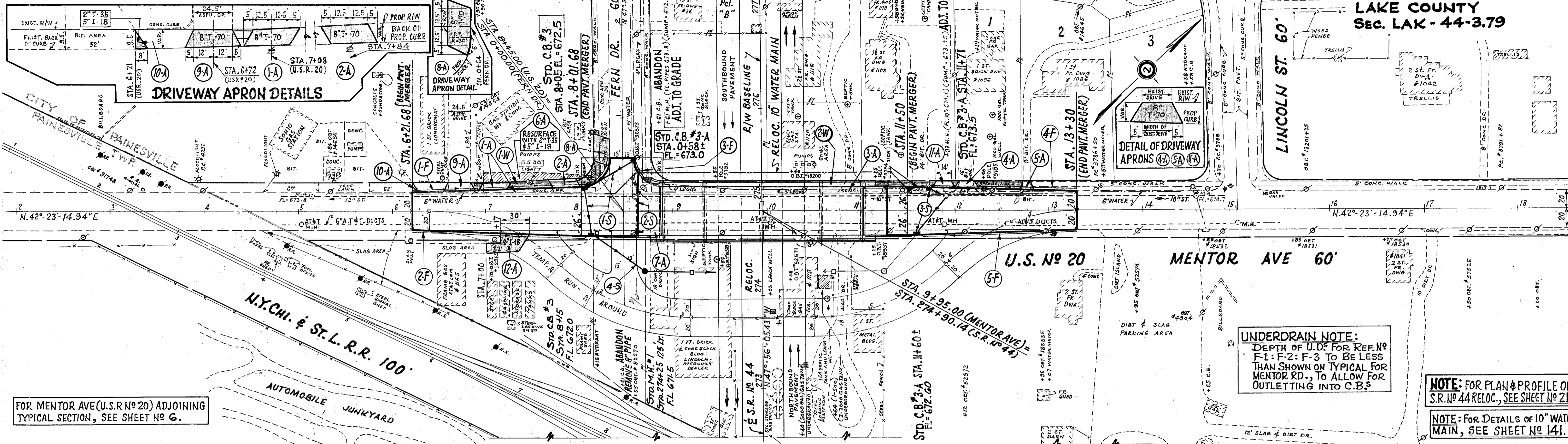


B.M.#5 ... R.R. SPIKE SET IN POLE (LP NUMBER) STA. 272+90 (S.R.#44) 145' W of P. ADJ. ELEV. = 680.443

See Extra Area Detail Sheet No 129 for Pavement Intersection Details.

130
204



FOR MENTOR AVE (U.S. No 20) ADJOINING TYPICAL SECTION, SEE SHEET No 6.

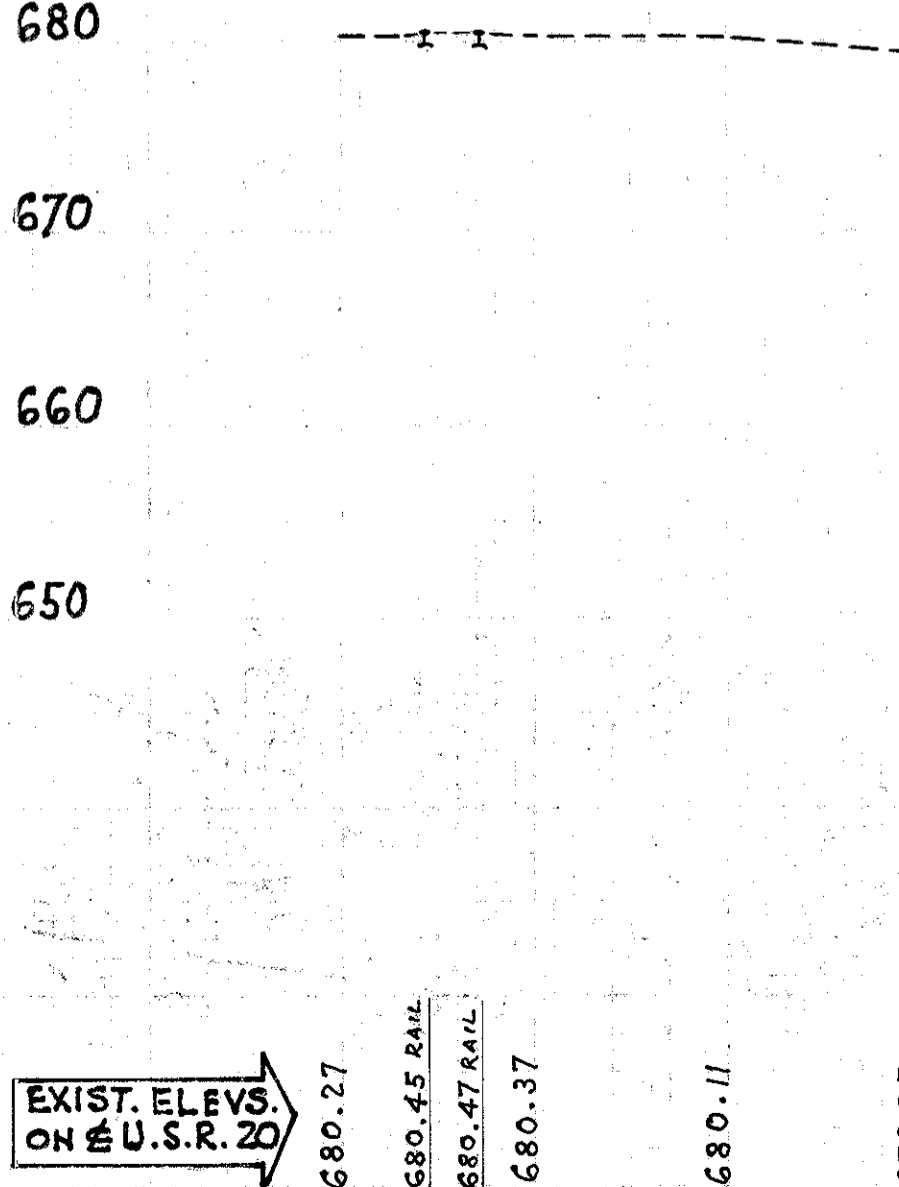
UNDERDRAIN NOTE:
DEPTH OF U.D. FOR REF. No F-1-F-2-F-3 TO BE LESS THAN SHOWN ON TYPICAL FOR MENTOR RD., TO ALLOW FOR OUTLETTING INTO C.B.S.

NOTE: FOR PLAN & PROFILE OF S.R. No 44 RELOC., SEE SHEET No 21

NOTE: FOR DETAILS OF 10" WATER MAIN, SEE SHEET No 141.

SIDEWALK				
Ref. No	Station	SIDE R/W	ITEM E-8	ITEM I-13
			REMOVAL & DISPOSAL OF EXIST. SIDEWALK	4" CONC. WALK
	FROM TO		SQ. FT.	SQ. FT.
1-W	6+84	FERN 0+88	1085	515
2-W	9+95	12+82	1080	570
TOTAL			2165	1085

DATUM ELEV. ON U.S. 20



NOTE: FOR STRUCTURE PLANS LAK-44-0489, SEE SHEETS 170 & 178

PROPOSED STRUCTURE
TYPE: Continuous steel beams with reinf. conc. deck and substructure.
SPANS: 43'-62.0'-62.0'-43' brgs.
ROADWAY: 52'-0" f/c Curbs with 5'-3" sidewalks
LOAD FREQUENCY: CF= 4.00 (57)
SKEW: None
WEARING SURF: 1" Monolithic Concrete
APPROACH SLABS: AS-1-54 Modified (25' long)
ALIGNMENT: Tangent.

EXCAVATION 355 C.Y.
EMBANKMENT 88 C.Y.
EMB. + 18% 80 C.Y.
SEED & PROTECT. 797 S.Y.

UNDERDRAINS			
Ref. No	Station	I-I LIN. FT.	
		FROM	TO
1-F	6+21	0+56	FERN
2-F	6+21	8+82	
3-F	0+56	FERN	8+82
4-F	11+04	13+30	
5-F	11+04	13+30	
TOTAL		966	

Ref. No	Station	I-I LIN. FT.	
		FROM	TO
1-F	6+21	0+56	FERN
2-F	6+21	8+82	
3-F	0+56	FERN	8+82
4-F	11+04	13+30	
5-F	11+04	13+30	
TOTAL		966	

DRAINAGE									
I-I LIN. FT.	I-8 EACH STD. M.H. (C) OR M-6.4 (B)	I-5 EACH 25" BEND M-6.4 (C) Class F-1	Ref. No	Station		ITEM I-1 12" CLASS-1 Sec M-6.6 (A) or M-6.8 (B)	ITEM I-8 STANDARD C.B. #3 #3-A To Grade	ITEM I-16 STORM M.H. ADJUSTED	ITEM E-12 PIPE REMOVED 15" AND UNDER
				FROM	TO				
			1-S	8+05	8+61	110	1	1	
			2-S	0+30±	8+61				2
			3-S	11+60±	11+93	20	2	1	
			4-S	8+15	27+25 (T)				2
72 50	1 2	1 2	TOTAL (U-388 (12) MUNICIPAL)			130	2 3	2 2	48

Ref. No	Station	ITEM E-8 12" CLASS-1 PORTLAND CEMENT CONCRETE CURB		ITEM I-16 12" CLASS-1 PORTLAND CEMENT CONCRETE CURB		ITEM I-16 12" CLASS-1 PORTLAND CEMENT CONCRETE CURB		ITEM E-12 PIPE REMOVED 15" AND UNDER	
		CU. YDS.	SQ. YDS.	CU. YDS.	SQ. YDS.	CU. YDS.	SQ. YDS.	CU. YDS.	SQ. YDS.
1-A	6+90	8+15	6	73	27				
2-A	7+84	8+15	7	55	30				
3-A	10+04	11+64	1		19				
4-A	12+11	12+76	3		16				
5-A	12+76	12+76	2						
6-A	6+90	8+15	21		20				
7-A	8+15	8+15	3		40				
8-A	0+64	FERN	3		56				
9-A	6+21	12+29	9		26				
10-A	6+72	11+86	6		12				
11-A	11+86	11+86	2						
12-A	17+00	17+47	16						
TOTAL			59		188				22 22