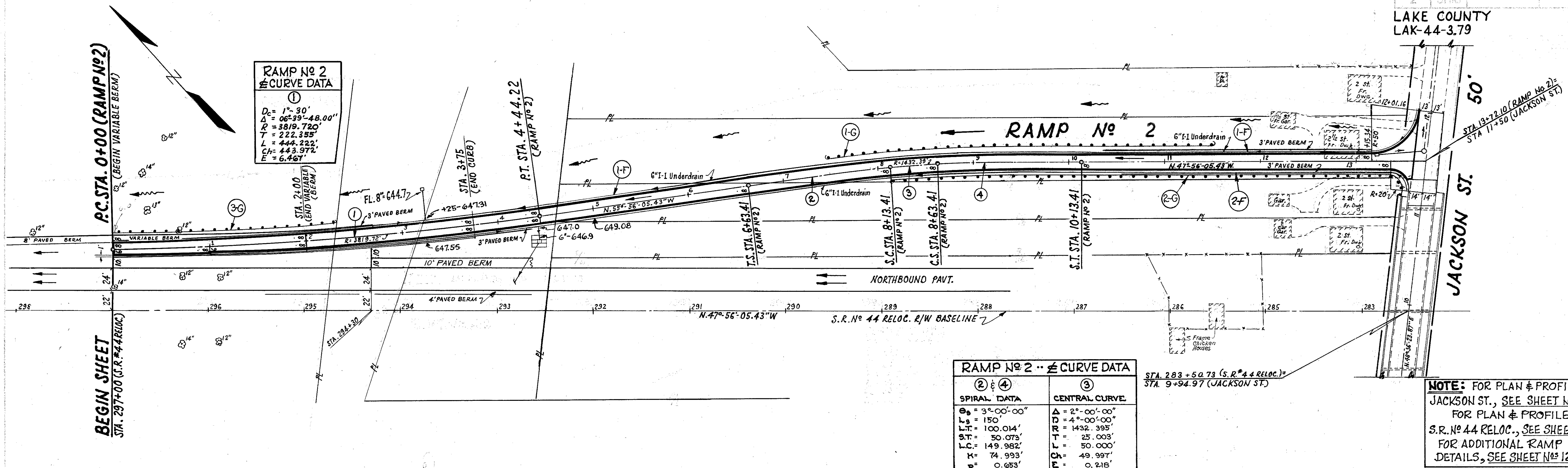


B.M. # 7 - R.R. SPIKE IN S. ROOT OF TRIPLE MAPLE  
STA. 290+64, (115' L OF E) ADJ. ELEV. = 650.174

B.M. # 6 - "O" IN OPEN FIRE HYD. IN FRONT  
OF #186 W. JACKSON ST. ELEV. = 677.082

LAKE COUNTY  
LAK-44-3.79



**RAMP No 2**  
E CURVE DATA

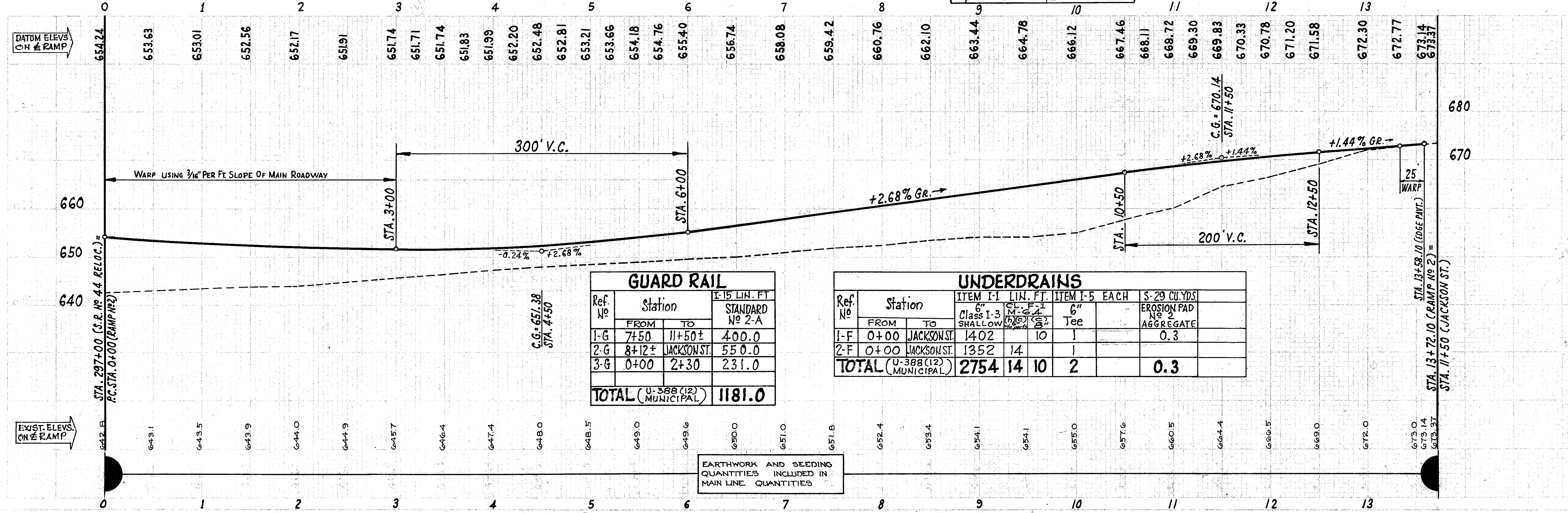
①

$D_c = 1^{\circ}-30'$   
 $\Delta = 06^{\circ}-39'-48.00''$   
 $R = 3819.720$   
 $T = 222.355'$   
 $L = 444.222'$   
 $C = 443.972'$   
 $E = 6.467'$

**RAMP No 2** .. E CURVE DATA

SPIRAL DATA		CENTRAL CURVE	
$\theta_s = 3^{\circ}-00'-00''$	$\Delta = 2^{\circ}-00'-00''$	$L_s = 150'$	$L_c = 4^{\circ}-00'-00''$
$L_s = 150.014'$	$L_c = 1432.395'$	$S.T. = 50.073'$	$T = 25.003'$
$L_c = 149.982'$	$L_c = 50.000'$	$T = 74.993'$	$E = 49.997'$
$E = 0.653'$	$E = 0.216'$		

**NOTE:** FOR PLAN & PROFILE OF JACKSON ST., SEE SHEET No 134.  
FOR PLAN & PROFILE OF S.R. No 44 RELOC., SEE SHEET No 22.  
FOR ADDITIONAL RAMP No 2 DETAILS, SEE SHEET Nos 128 & 129.



DATUM ELEV. ON RAMP

EXIST. ELEV. ON RAMP

**GUARD RAIL**

Ref. No	Station		E-15 LIN. FT. STANDARD No 2-A
	FROM	TO	
1-G	7+50	11+50±	400.0
2-G	8+12±	JACKSON ST.	550.0
3-G	0+00	2+30	231.0
<b>TOTAL (U-388 (12) MUNICIPAL)</b>			<b>1181.0</b>

**UNDERDRAINS**

Ref. No	Station		ITEM I-1 LIN. FT.		ITEM I-5 EACH	S-29 CU. YDS.	
	FROM	TO	Class I-3 SHALLOW	6" Tee			
1-F	0+00	JACKSON ST.	1402	10	1	0.3	
2-F	0+00	JACKSON ST.	1352	14	1		
<b>TOTAL (U-388 (12) MUNICIPAL)</b>			<b>2754</b>	<b>14</b>	<b>10</b>	<b>2</b>	<b>0.3</b>

EARTHWORK AND SEEDING QUANTITIES INCLUDED IN MAIN LINE QUANTITIES

PLAN & PROFILE ... RAMP No 2, STA. 0+00 TO STA. 13+72.10