

B.M. #7 - R.R. SPIKE IN S. ROOT OF TRIPLE MAPLE
 STA. 290+64.3 (115' L. OF C) ADJ. ELEV. = 650.174

RAMP NO 1 & CURVE DATA

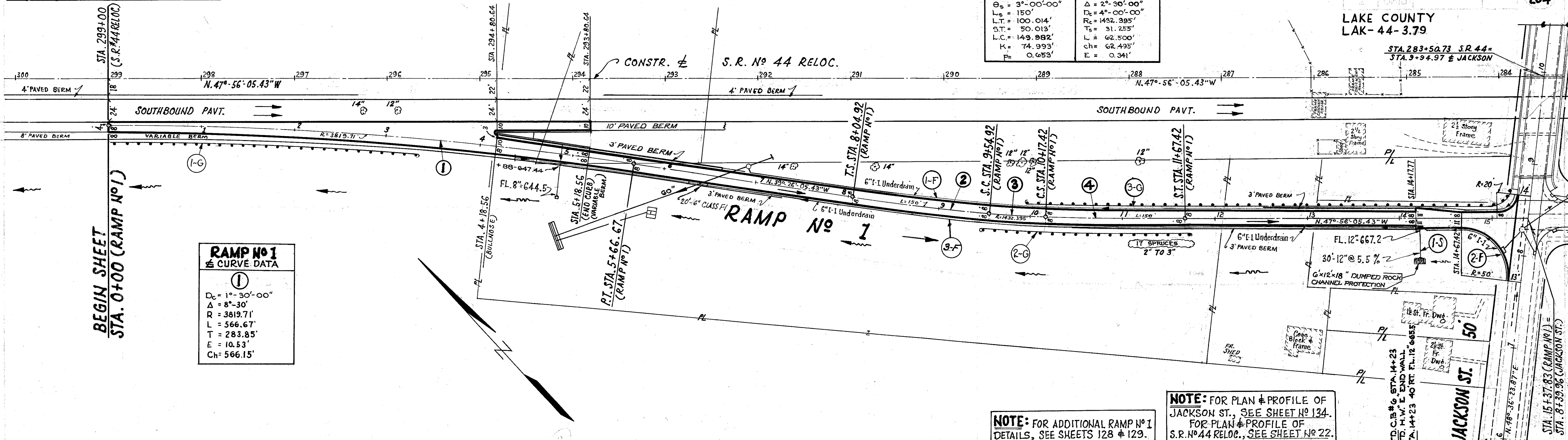
② & ④ SPIRAL DATA		③ CENTRAL CURVE
$\theta_s = 3^\circ-00'-00''$	$\Delta = 2^\circ-30'-00''$	$\Delta = 2^\circ-30'-00''$
$L_s = 150'$	$D_c = 4^\circ-00'-00''$	$D_c = 4^\circ-00'-00''$
$L.T. = 100.014'$	$R_c = 1432.395'$	$R_c = 1432.395'$
$S.T. = 50.013'$	$L = 62.500'$	$L = 62.500'$
$L.C. = 149.982'$	$T_s = 31.255'$	$T_s = 31.255'$
$K = 74.993'$	$ch = 62.495'$	$ch = 62.495'$
$P = 0.653'$	$E = 0.341'$	$E = 0.341'$

B.M. #6 - "O" IN OPEN FIRE HYD. IN FRONT
 OF #1186 W. JACKSON ST. ELEV. = 677.082

LAKE COUNTY
 LAK-44-3.79

STA. 283+50.73 S.R. 44-
 STA. 9+94.97 & JACKSON

125
 204



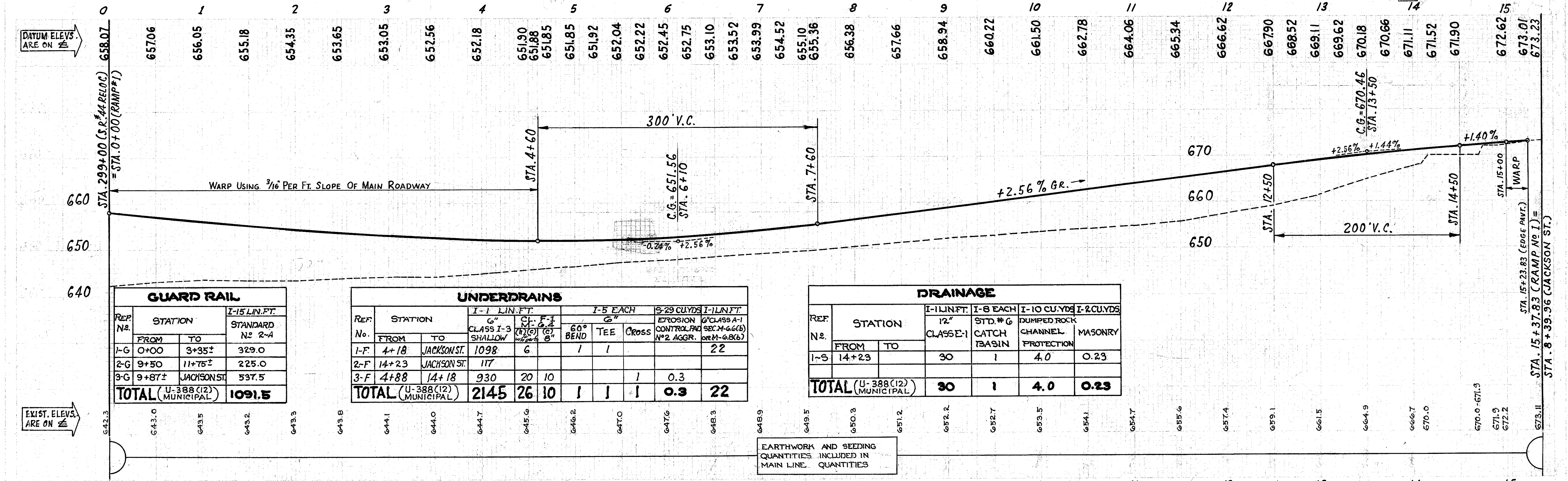
RAMP NO 1 & CURVE DATA

①

$D_c = 1^\circ-30'-00''$
$\Delta = 8^\circ-30'$
$R = 3819.71'$
$L = 566.67'$
$T = 283.85'$
$E = 10.53'$
$Ch = 566.15'$

NOTE: FOR ADDITIONAL RAMP NO 1
 DETAILS, SEE SHEETS 128 & 129.

NOTE: FOR PLAN & PROFILE OF
 JACKSON ST., SEE SHEET NO 134.
 FOR PLAN & PROFILE OF
 S.R. NO 44 RELOC., SEE SHEET NO 22.



GUARD RAIL

REP. No.	STATION	I-15 LIN. FT.	STANDARD No 2-4
1-G	0+00 TO 3+35±	329.0	
2-G	9+50 TO 11+75±	225.0	
3-G	9+87± TO JACKSON ST.	537.5	
TOTAL (U-388 (12) MUNICIPAL)		1091.5	

UNDERDRAINS

REF. No.	STATION	I-1 LIN. FT.			I-5 EACH			EROSION CONTROL PAD NO 2 AGGR. OR M-6.8(b)	I-1 LIN. FT.
		CLASS I-3 SHALLOW	CL. F-1 (1)(2) (3) (4) (5) (6)	M. 6.4	60° BEND	TEE	Cross		
1-F	4+18 TO JACKSON ST.	1098	6		1	1		22	
2-F	14+23 TO JACKSON ST.	117							
3-F	4+88 TO 14+18	930	20	10		1	0.3		
TOTAL (U-388 (12) MUNICIPAL)		2145	26	10	1	1	0.3	22	

DRAINAGE

REF. No.	STATION	I-1 LIN. FT.		I-8 EACH		I-10 CU. YDS		I-2 CU. YDS	
		12" CLASS I-1	12" CLASS I-1	STD. # 6 CATCH BASIN	STD. # 6 CATCH BASIN	DUMPED ROCK CHANNEL PROTECTION	DUMPED ROCK CHANNEL PROTECTION	MASONRY	MASONRY
1-S	14+23	30		1		4.0		0.23	
TOTAL (U-388 (12) MUNICIPAL)		30		1		4.0		0.23	

EARTHWORK AND SEEDING QUANTITIES INCLUDED IN MAIN LINE QUANTITIES

PLAN & PROFILE . . . RAMP No 1 . . . STA. 0+00 TO STA. 15+37.83