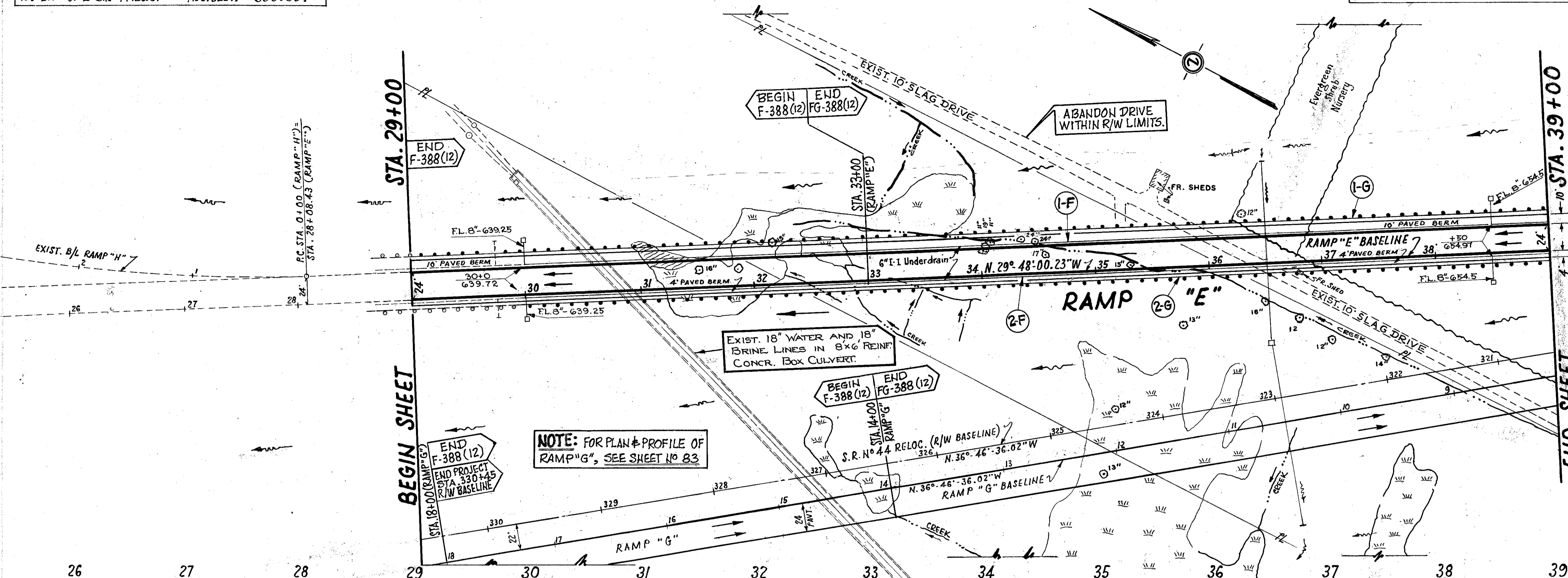


LH

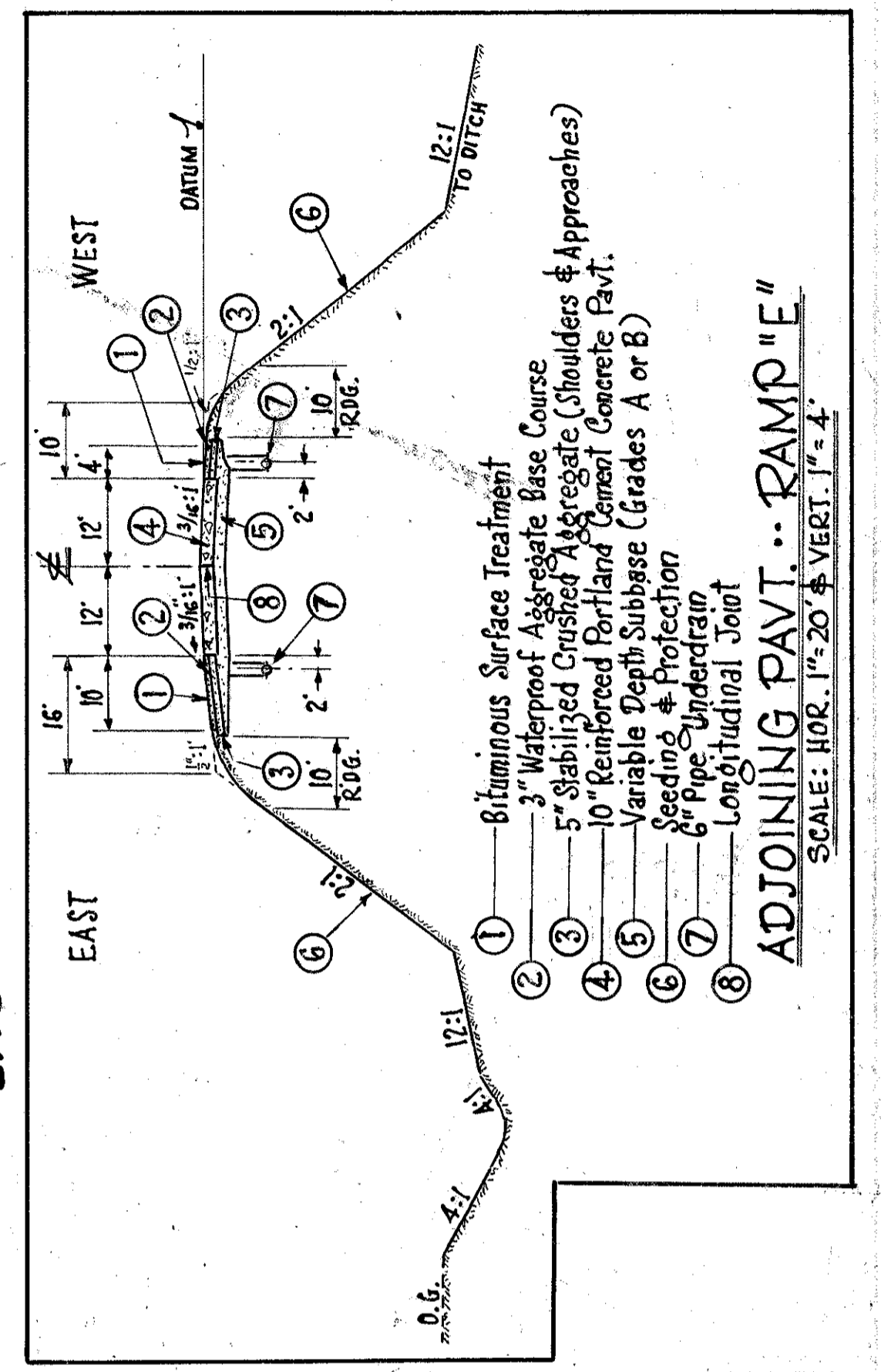
B.M. #11 -- SPIKE IN C.E.I. POLE #192836 (27'S. OF BLACKBROOK RD.)  
189' LEFT OF ± S.R.#44 RELOC. ADJ. ELEV. = 630.83

B.M. #1 -- R.R. SPIKE SET IN 12" OAK, STA. 322+85,  
(165' R. OF R/W BASELINE) ADJ. ELEV. = 633.011

LAKE COUNTY  
LAK - 44 - 3.79

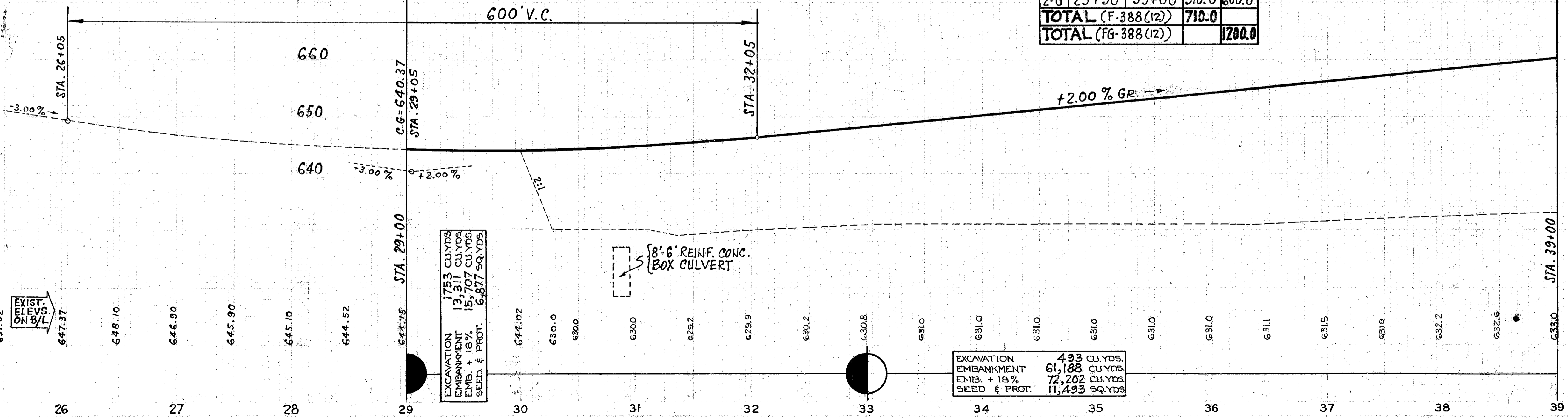


NOTE: FOR PLAN & PROFILE OF RAMP "G", SEE SHEET NO 83



DATUM ELEV. ON BASELINE	
26	644.15
27	644.12
28	644.04
29	643.38
30	643.97
31	644.02
32	644.12
33	644.27
34	644.47
35	644.73
36	645.04
37	645.40
38	645.81
39	646.27
60	646.37 1/2
61	647.27
62	648.27
63	649.27
64	650.27
65	651.27
66	652.27
67	653.27
68	654.27
69	655.27
70	656.27
71	657.27
72	658.27
73	659.27
74	660.27

Ref. No	Station		I-15 LIN. FT. STANDARD No 2-A	
	FROM	TO	F	FG
1-G	29+00	39+00	400.0	600.0
2-G	29+90	39+00	310.0	600.0
<b>TOTAL (F-388(12))</b>			<b>710.0</b>	
<b>TOTAL (FG-388(12))</b>				<b>1200.0</b>



EXCAVATION	1753 CU.YDS
EMBANKMENT	13,311 CU.YDS
EMB. + 18%	15,707 CU.YDS
SEED & PROT.	6,877 SQ.YDS

EXCAVATION	493 CU.YDS.
EMBANKMENT	61,188 CU.YDS.
EMB. + 18%	72,202 CU.YDS.
SEED & PROT.	11,493 SQ.YDS.

Ref. No	Station	ITEM I-1 LIN. FT.		ITEM I-5 EACH (S-29 CU.YDS)	
		SHALLOW	DEEP	6\"/>	
F	30+00	33+00	310	10	0.3
F	30+00	33+00	310	10	0.3
FG	33+00	39+00	606	10	0.3
FG	33+00	39+00	606	10	0.3
<b>TOTAL (F-388(12))</b>		<b>620</b>	<b>20</b>	<b>2</b>	<b>0.6</b>
<b>TOTAL (FG-388(12))</b>		<b>1212</b>	<b>20</b>	<b>2</b>	<b>0.6</b>

PLAN & PROFILE... RAMP "E" ... STA. 29+00 to STA. 39+00