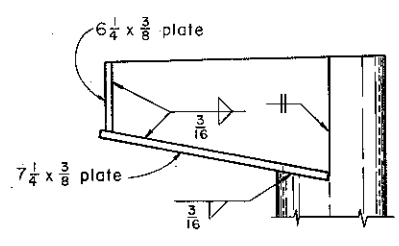
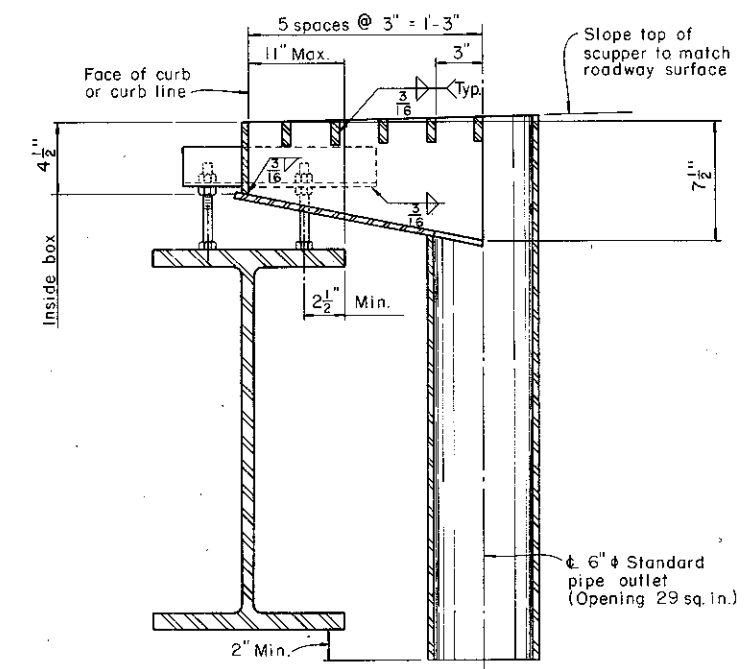


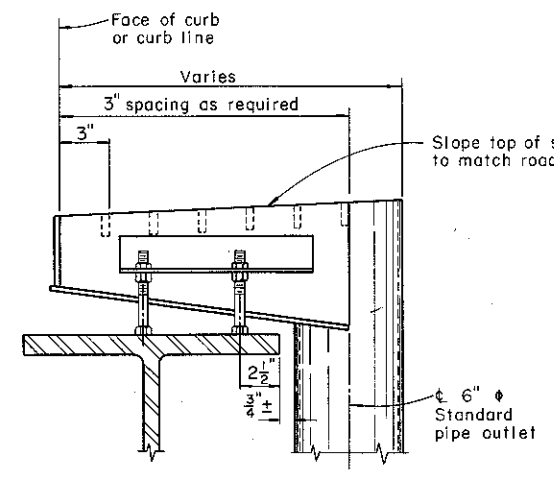
PLAN  
STANDARD SCUPPER



SCUPPER ELEVATION

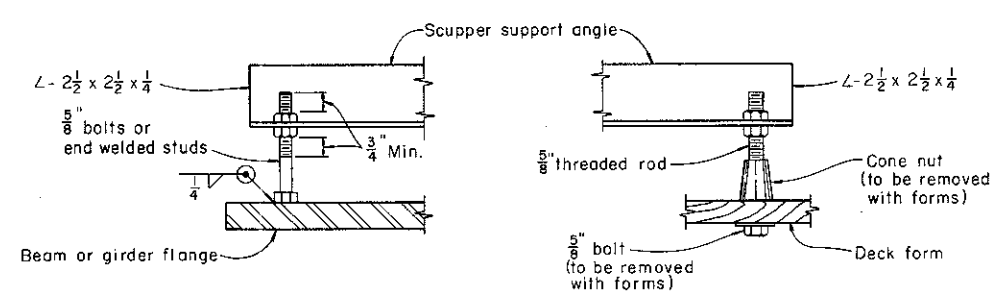


SECTION A-A



DETAIL A

Scupper elevation showing method for lengthening scupper where necessary to clear the flanges.



DETAIL B

DETAIL C

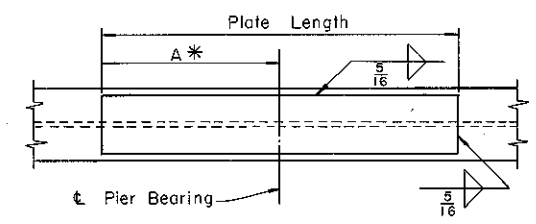
SCUPPER SUPPORT BOLTS

Scuppers shall be furnished in sufficient number to provide one square inch of net scupper opening for each 12 to 15 square feet of deck area to be drained. The downspout shall have at least one square inch of opening for each five square inch of net scupper opening, with a minimum nominal diameter of 6 inches.

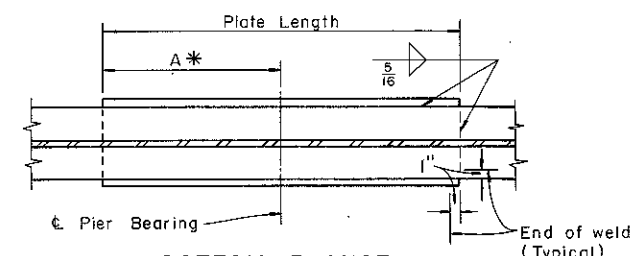
Scupper should clear crossframes by at least 6" and abutments by 2'-6". They shall be no nearer than 1/4 of pier bearings than 0.10 of span length.

The support angles and support bolts are included with scupper for payment.

Scuppers, including support angles, shall be galvanized in accordance with 711.



TOP FLANGE



BOTTOM FLANGE

MOMENT PLATES

\* See Standard Drawings or project plans for dimension "A". Dimension "A" equals 1/2 plate length unless otherwise shown, in which case the plans shall indicate the span to which dimension "A" applies.

REVISIONS	STATE OF OHIO DEPARTMENT OF HIGHWAYS DIVISION OF DESIGN AND CONSTRUCTION BUREAU OF BRIDGES			
	<b>STANDARD SUPERSTRUCTURE DETAILS FOR STEEL BEAM AND GIRDER BRIDGES</b>			
APPROVED:	DATE: 6-12-69			DRAWING NUMBER
PREPARED	TRACED	CHECKED	REVIEWED	SHEET NO 3
MPB	NRB	WJJ	CDG RVH DFG	OF 4 SHEETS