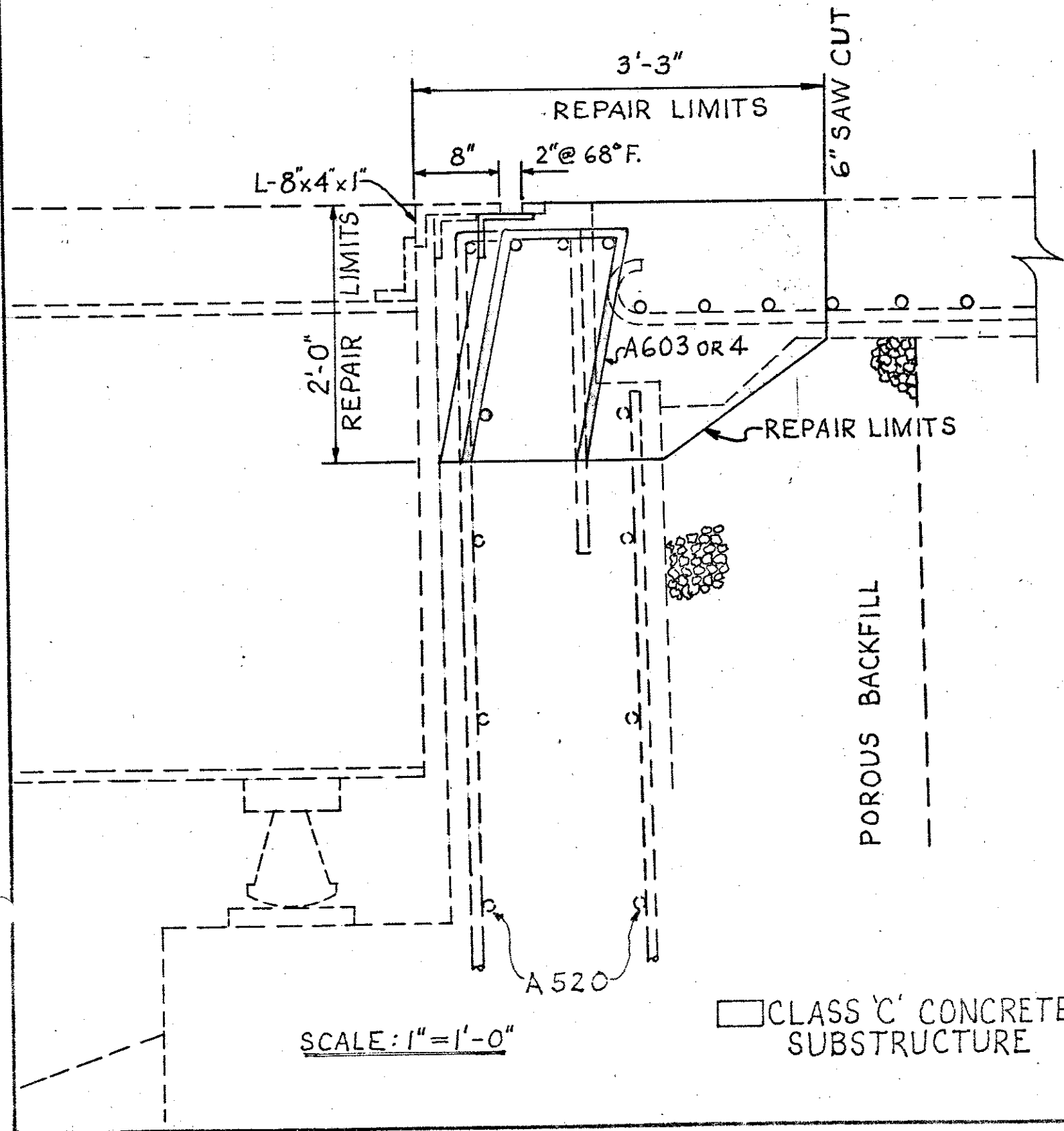


M & R 695

# BACKWALL REPAIR DETAIL

LAK.44-0207L - SOUTH ABUTMENT

LAK44-0207R - NORTH ABUTMENT



# BACKWALL REPAIR DETAIL

LAK.44-0207L-NORTH ABUTMENT

LAK.44-0207R-SOUTH ABUTMENT

LAKE COUNTY  
LAK-44-202

LAK-90-14.68

38  
47

PLAN NO.

