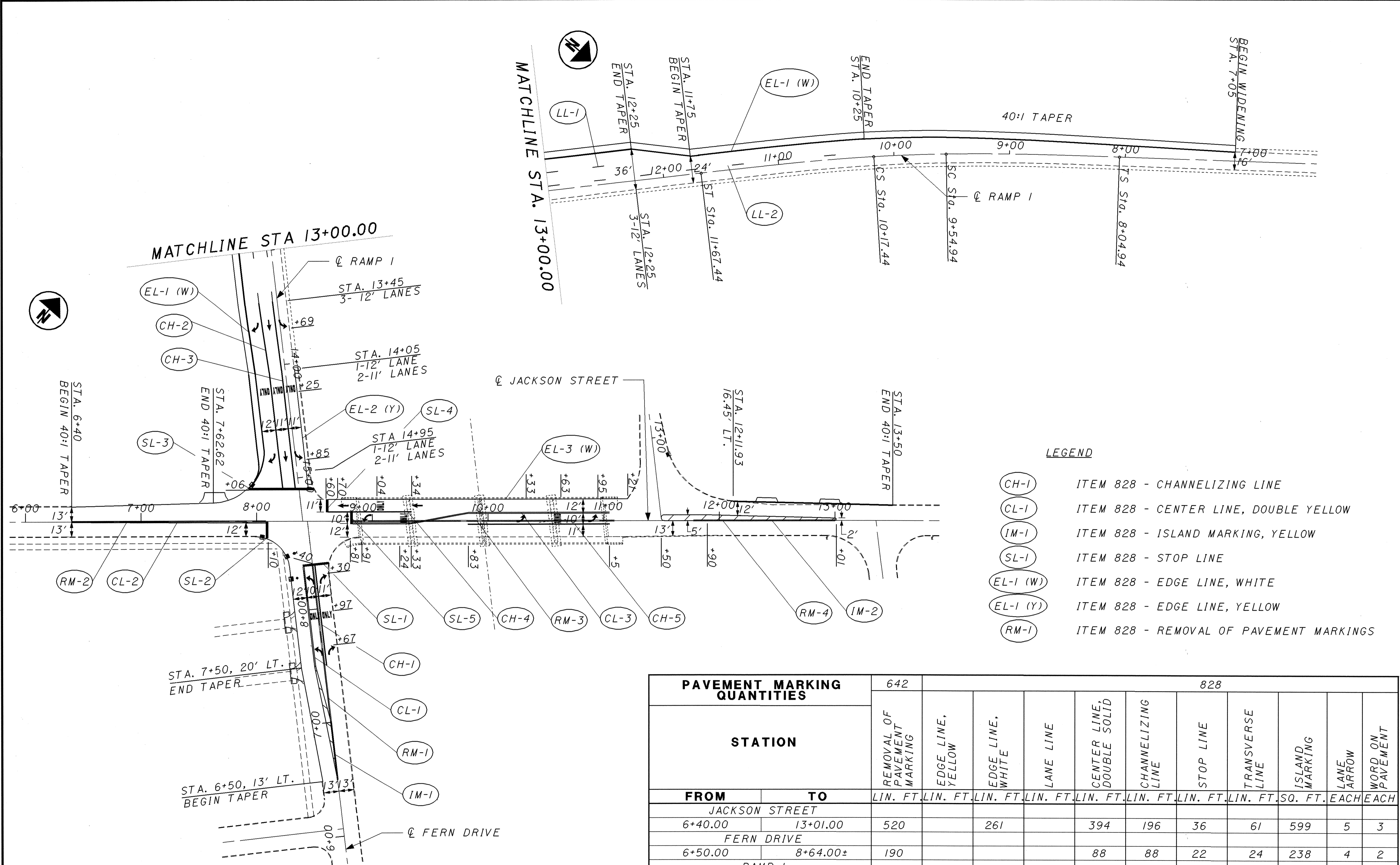


CALCULATED  
CHECKED

PAVEMENT MARKING PLAN

LAKE COUNTY  
LAK-2/44-13.05/4.14

50P  
93



LEGEND

- (CH-1) ITEM 828 - CHANNELIZING LINE
- (CL-1) ITEM 828 - CENTER LINE, DOUBLE YELLOW
- (IM-1) ITEM 828 - ISLAND MARKING, YELLOW
- (SL-1) ITEM 828 - STOP LINE
- (EL-1 (W)) ITEM 828 - EDGE LINE, WHITE
- (EL-1 (Y)) ITEM 828 - EDGE LINE, YELLOW
- (RM-1) ITEM 828 - REMOVAL OF PAVEMENT MARKINGS

PAVEMENT MARKING QUANTITIES		828										
STATION		REMOVAL OF PAVEMENT MARKING	EDGE LINE, YELLOW	EDGE LINE, WHITE	LANE LINE	CENTER LINE, DOUBLE SOLID	CHANNELIZING LINE	STOP LINE	TRANSVERSE LINE	ISLAND MARKING	LANE ARROW	WORD ON PAVEMENT
FROM	TO	LIN. FT.	LIN. FT.	LIN. FT.	LIN. FT.	LIN. FT.	LIN. FT.	LIN. FT.	LIN. FT.	SQ. FT.	EACH	EACH
JACKSON STREET												
6+40.00	13+01.00	520		261		394	196	36	61	599	5	3
FERN DRIVE												
6+50.00	8+64.00±	190				88	88	22	24	238	4	2
RAMP 1												
7+05.00	15+25.00±		105	807	440		325	56			6	3
SUB-TOTALS		710	105	1068	440	482	609	114	85	837	15	8
TOTALS CARRIED TO GENERAL SUMMARY		710	0.02 MI.	0.20 MI.	0.08 MI.	0.09 MI.	609	114	85	837	15	8

I:\PROJECTS\PI\1839\B&N\PLANS\21365TP.DGN 14-AUG-2001 10:00PM fkonopka