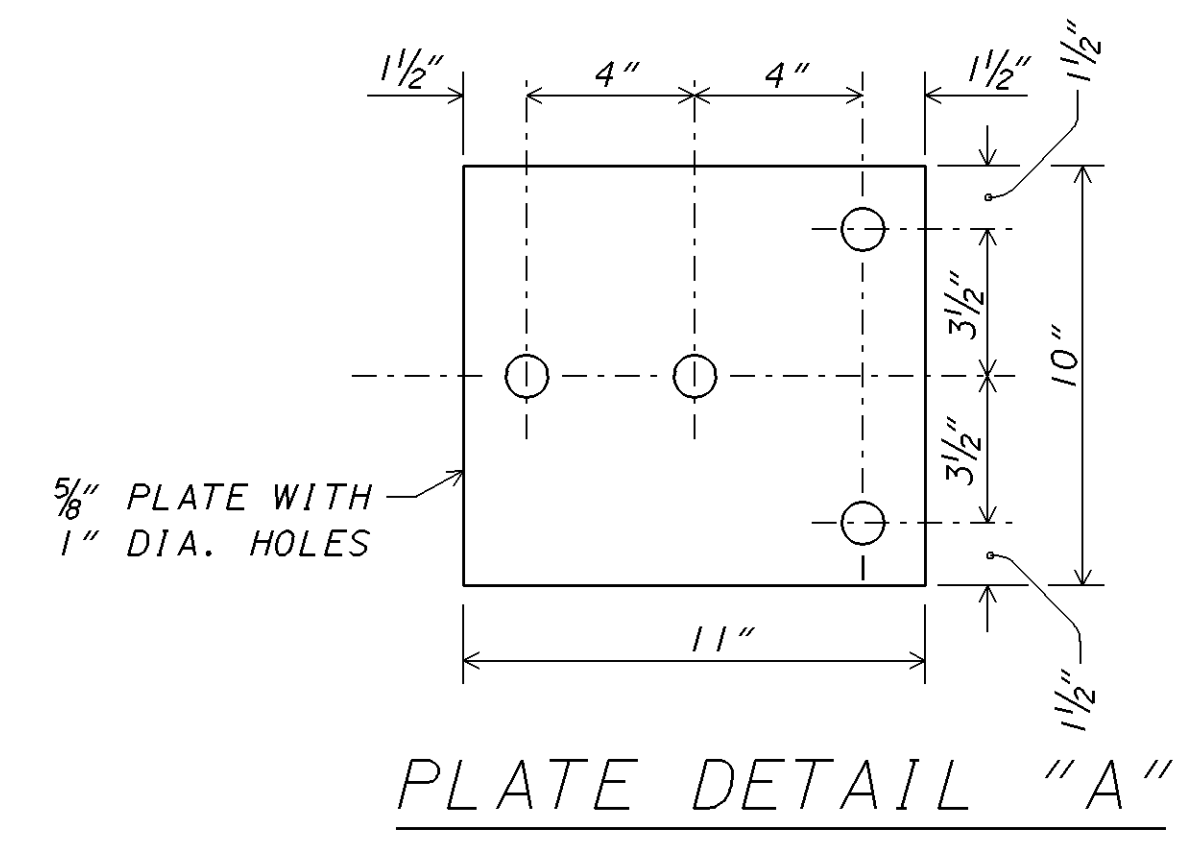
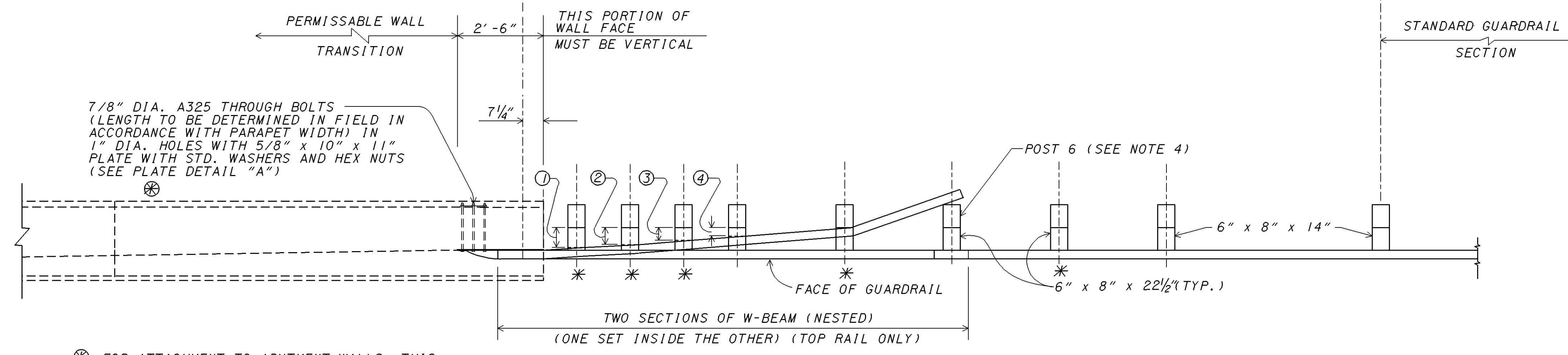


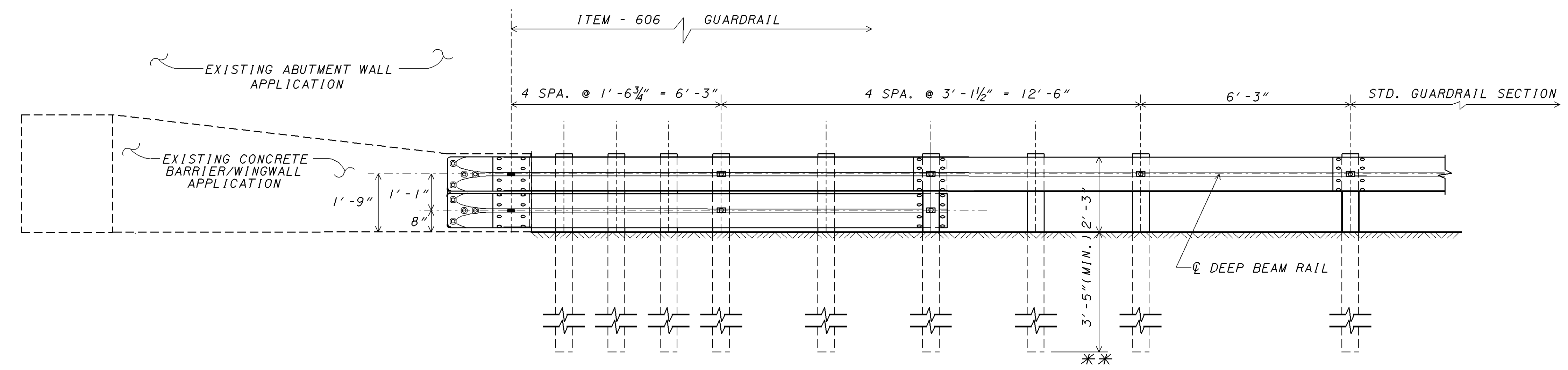
BRIDGE TERMINAL ASSEMBLY, TYPE 4, AS PER PLAN



PLAN

⊗ - FOR ATTACHMENT TO ABUTMENT WALLS, THIS ITEM REQUIRES THE USE OF POLYESTER RESIN ANCHORS WITH FEMALE THREADED INSERTS (10" LONG) TO ACCEPT 7/8" DIAMETER BOLTS. (PLATE DETAIL NOT REQUIRED)

\* GUARDRAIL NOT ATTACHED TO POSTS. BLOCKOUT FASTENED TO POST WITH STD. POST BOLT.



ELEVATION

\*\*SEE STD. CONSTRUCTION DRAWING GR-1.2 FOR ADDITIONAL POST EMBEDMENT DETAILS.

GENERAL NOTES

1. THIS GUARDRAIL TRANSITION IS APPROPRIATE FOR CONNECTION TO A VERTICAL CONCRETE SHAPE AND SHOULD NOT BE CONNECTED DIRECTLY TO A CONCRETE SAFETY SHAPE. CONCRETE SAFETY SHAPE BARRIERS SHOULD BE TRANSITIONED TO A VERTICAL SHAPE AT THE GUARDRAIL CONNECTION.
2. THE RUBRAIL MAY BE SHOP BENT IN THE LAST 3 FEET TO FACILITATE INSTALLATION.
3. BOTTOM WOOD BLOCKS, LOCATED ON POSTS 1,2,3, AND 4 ARE CENTER DRILLED AND SECURED WITH 5/8" CARRIAGE BOLTS.
4. POSTS 1,2,3,4, AND 6 REQUIRE AN ADDITIONAL HOLE TO ATTACH LOWER BLOCKS AND/OR LOWER BEAM.
5. SEE STANDARD CONSTRUCTION DRAWINGS GR-1.2M AND GR-3.4M FOR ADDITIONAL DETAILS.

BLOCKOUT CHART BOTTOM BEAM WOOD BLOCKS 1'-2" X 6"	
POST	THICKNESS
①	7"
②	6"
③	4.5"
④	3"

THIS DETAIL MODIFIES A BRIDGE TERMINAL ASSEMBLY, TYPE 4 FOR CONNECTION TO A VERTICAL WALL. ALL DIMENSIONS AND DETAILS SHOWN ARE IN AGREEMENT WITH THE APPROVED CRASHWORTHY GUARDRAIL TRANSITION FOUND IN "FHWA TECHNICAL ADVISORY T 5040.26" AND THE "ROADSIDE DESIGN GUIDE"

PLOTTED FROM PROJECTS\P\d\18391\dgn\18391.grf.dgn