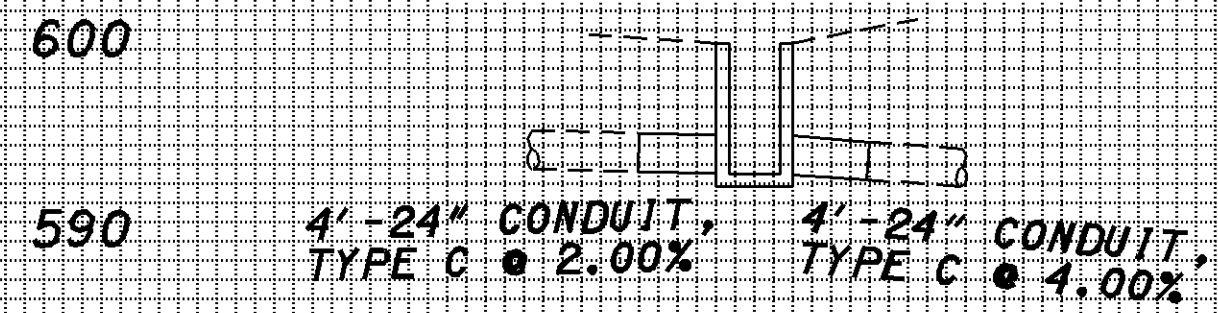
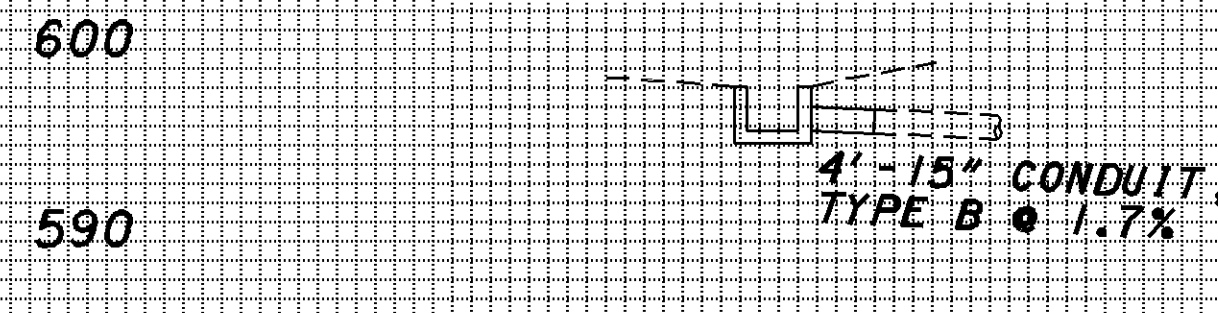


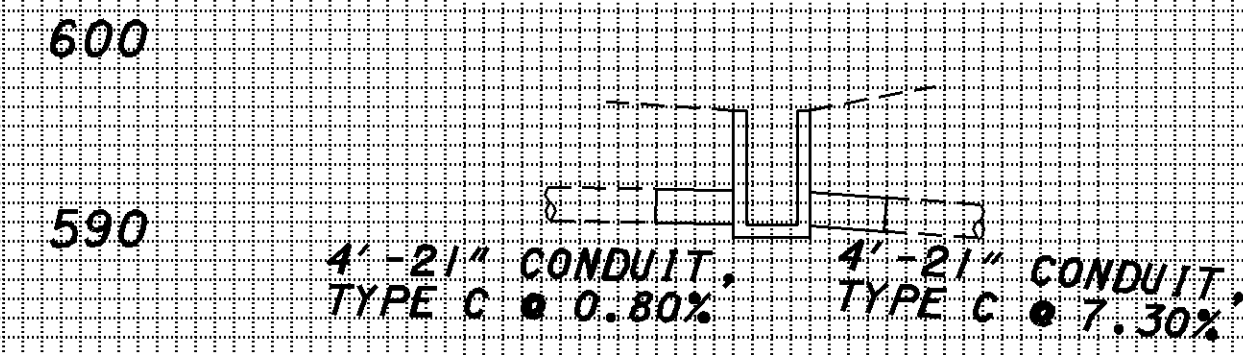
PLOTTED FROM: I:\PROJECTS\PI\18391\dgn\18391gxa.dgn



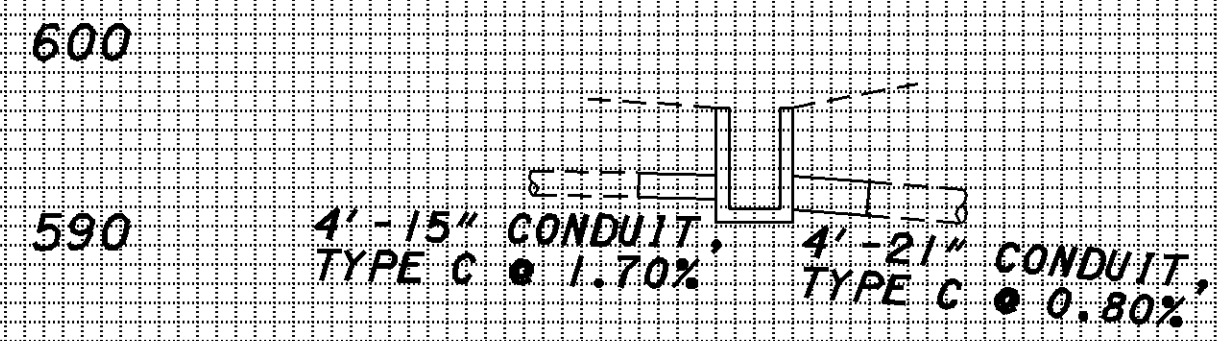
D-2
 CATCH BASIN, NO. 5
 STA 73+65, SR-44,
 58' LT
 GRATE EL. = 601.30
 E 24" = 594.54
 E 6" = 595.87



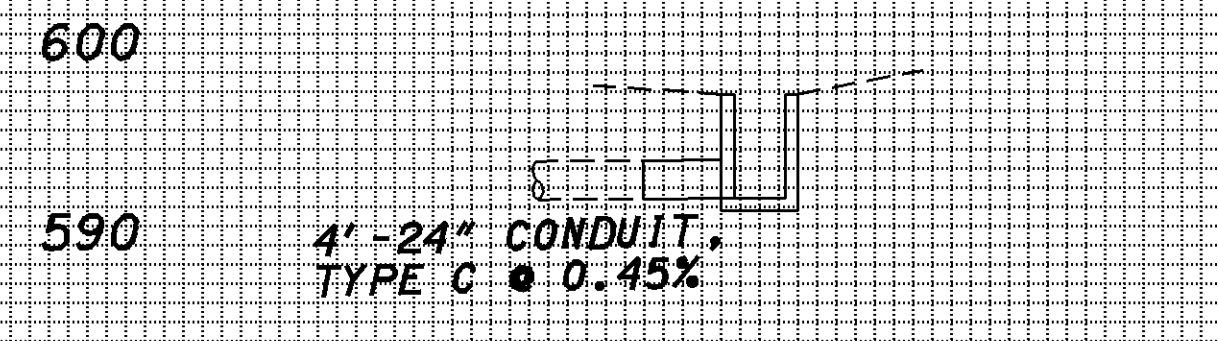
D-3
 CATCH BASIN, NO. 5
 STA 75+50, SR-44,
 58' RT
 GRATE EL. = 599.07
 E 15" = 596.77
 E 6" = 597.35



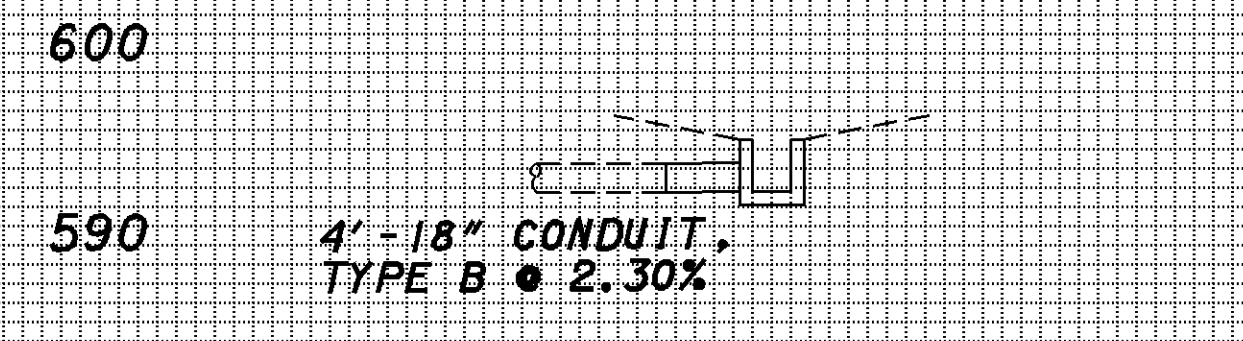
D-4
 CATCH BASIN, NO. 5
 STA 77+00, SR-44,
 62' LT
 GRATE EL. = 597.80
 E 21" = 591.88
 E 6" = 592.96



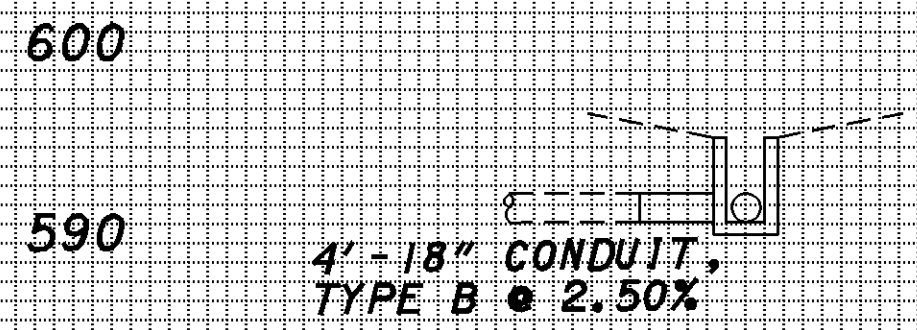
D-5
 CATCH BASIN, NO. 5
 STA 77+50, SR-44,
 58' RT
 GRATE EL. = 598.14
 E 21" = 592.90
 E 15" = 593.40
 E 6" = 593.98



D-6
 CATCH BASIN, NO. 5
 STA 13+50, RAMP D,
 19' RT
 GRATE EL. = 598.84
 E 24" = 593.46
 E 6" = 594.79



D-7
 CATCH BASIN, NO. 2-2A
 STA 98+88, SR-44,
 72' RT
 GRATE EL. = 596.50
 WINDOW EL = 596.00
 E 18" = 593.80
 E 6" = 594.80



D-8
 CATCH BASIN, NO. 2-2A
 STA 99+60, SR-44,
 60' RT
 GRATE EL. = 596.50
 WINDOW EL = 596.00
 E 18" = 592.10

DRAWN	EMK
CALCULATED	EMK
CHECKED	LDH
REVISED	

STORM SEWER PROFILE

LAKE COUNTY
LAK-2/44-13.05/4.14