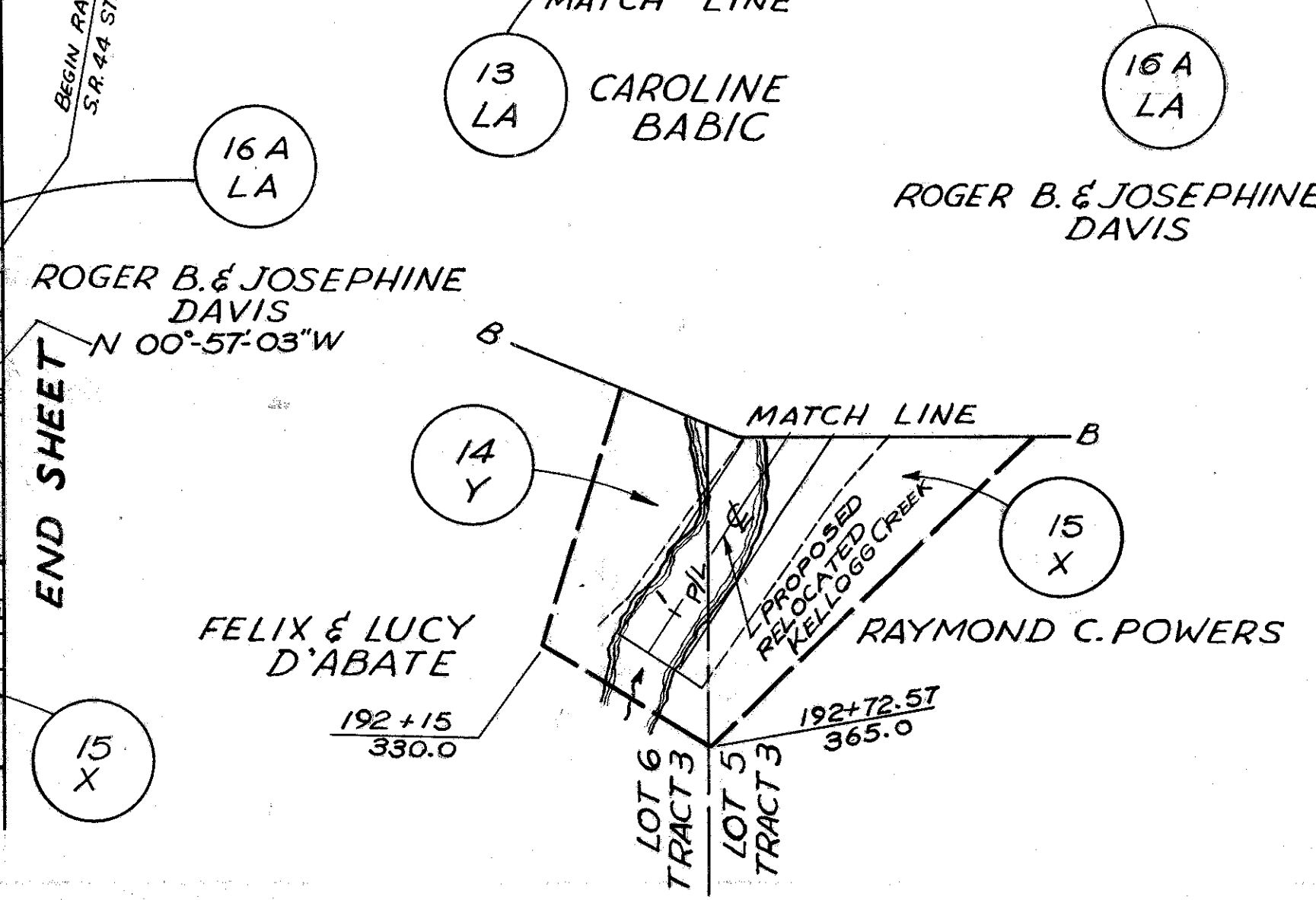
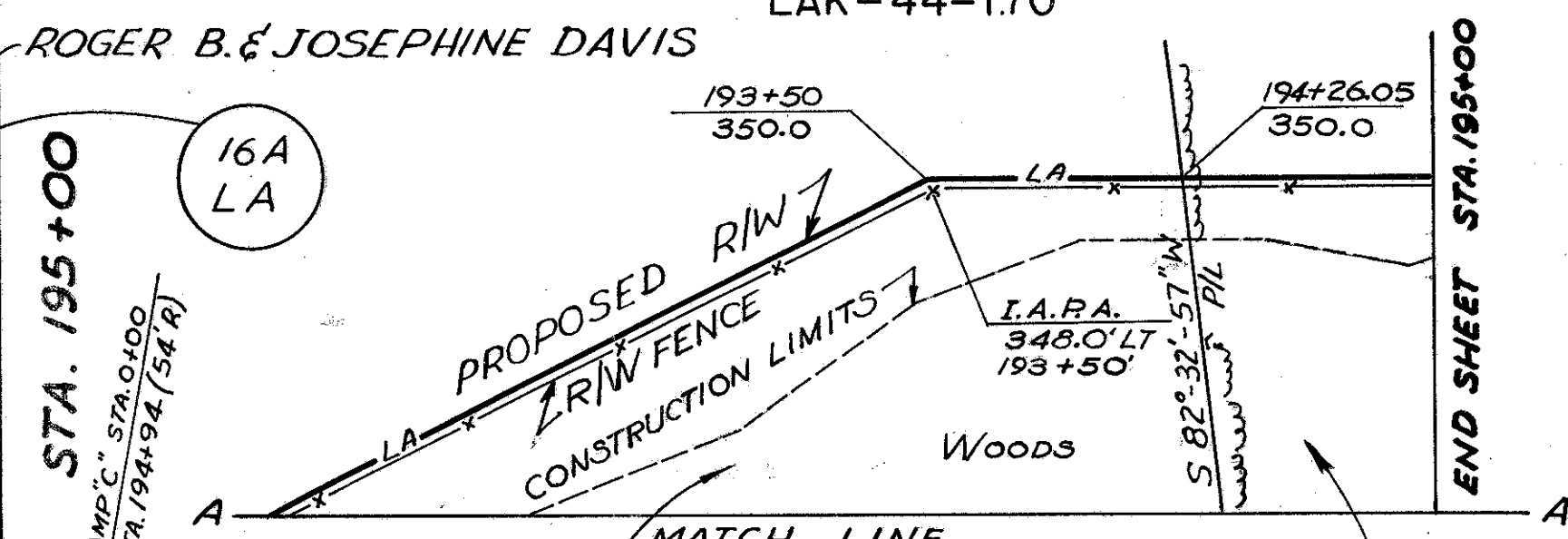
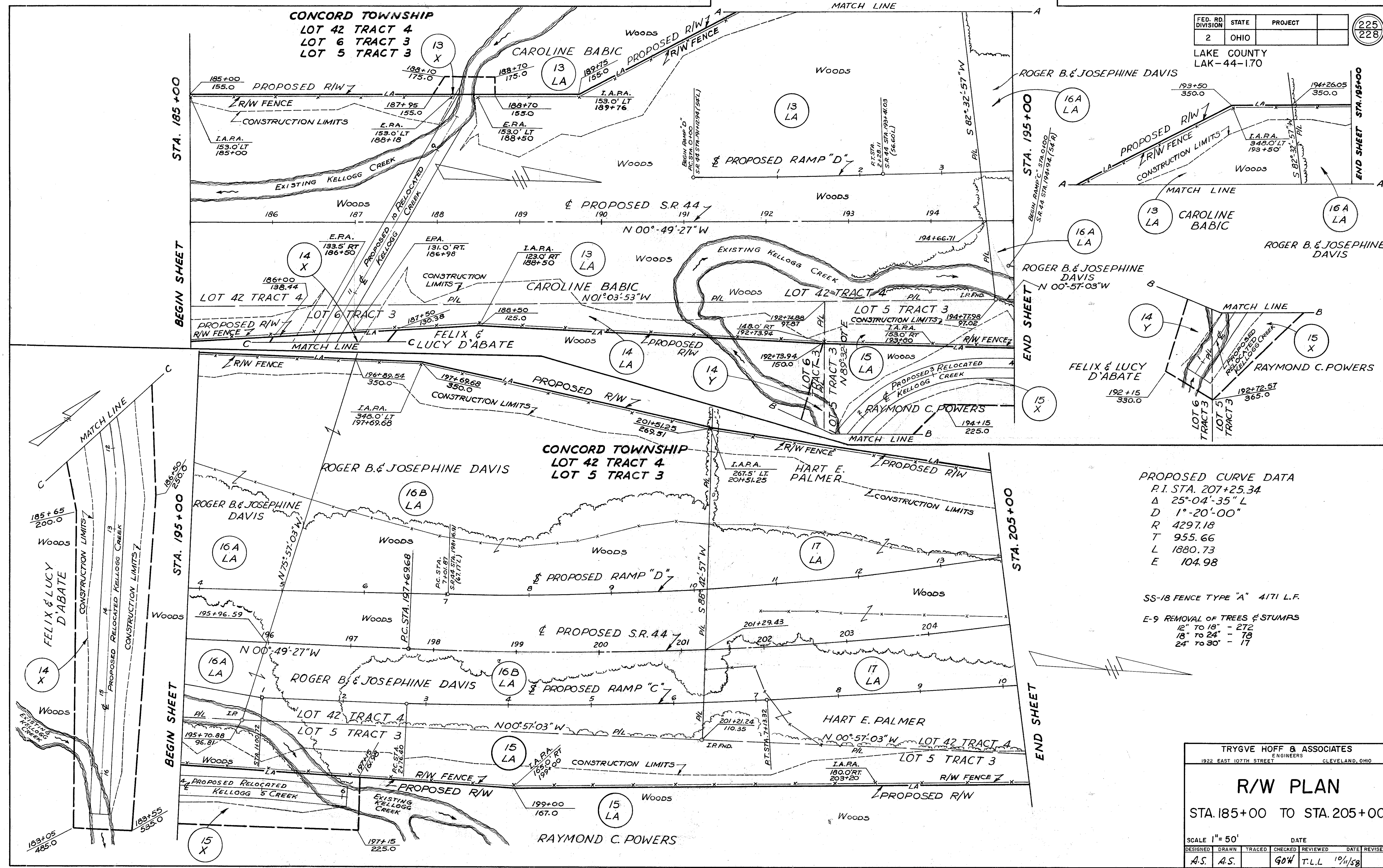


LAKE COUNTY  
LAK-44-170



PROPOSED CURVE DATA  
 P.I. STA. 207+25.34  
 $\Delta$  25°-04'-35" L  
 D 1°-20'-00"  
 R 4297.18  
 T 955.66  
 L 1880.73  
 E 104.98

SS-18 FENCE TYPE "A" 4171 L.F.  
 E-9 REMOVAL OF TREES & STUMPS  
 12" TO 18" - 272  
 18" TO 24" - 78  
 24" TO 30" - 17

TRYGVE HOFF & ASSOCIATES  
 ENGINEERS  
 1922 EAST 107TH STREET CLEVELAND, OHIO

# R/W PLAN

STA. 185+00 TO STA. 205+00

SCALE 1" = 50'	DATE
DESIGNED A.S.	DRAWN A.S.
TRACED	CHECKED
REVIEWED	DATE
90W	T.L.L. 10/1/58