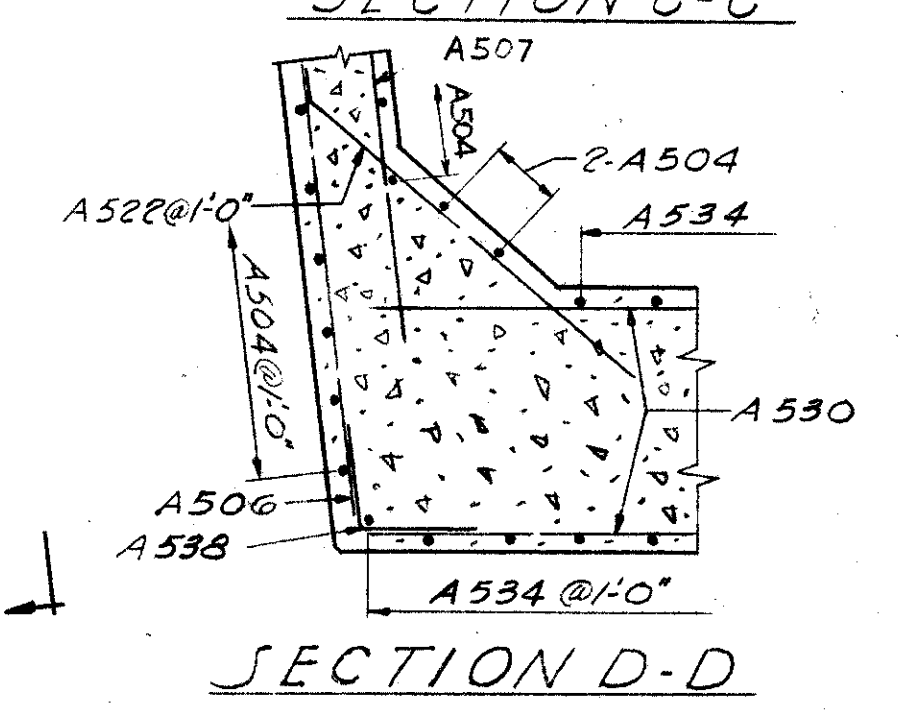
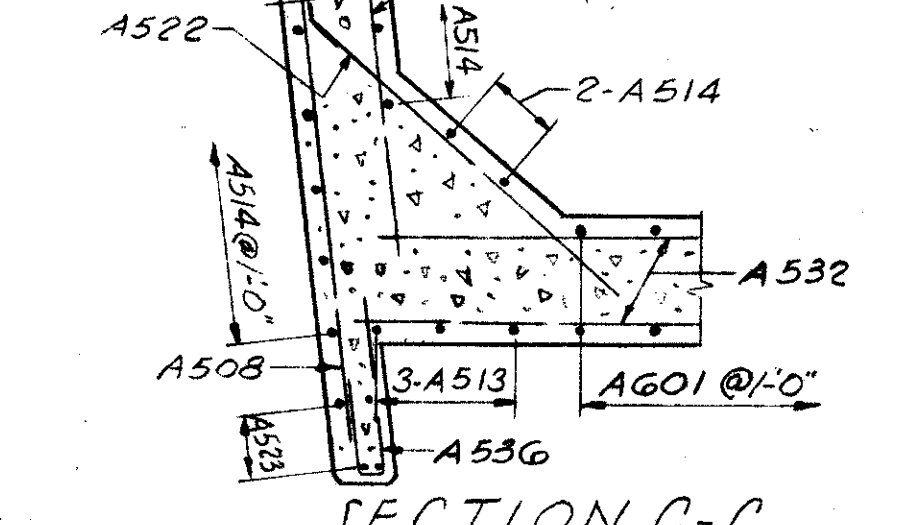
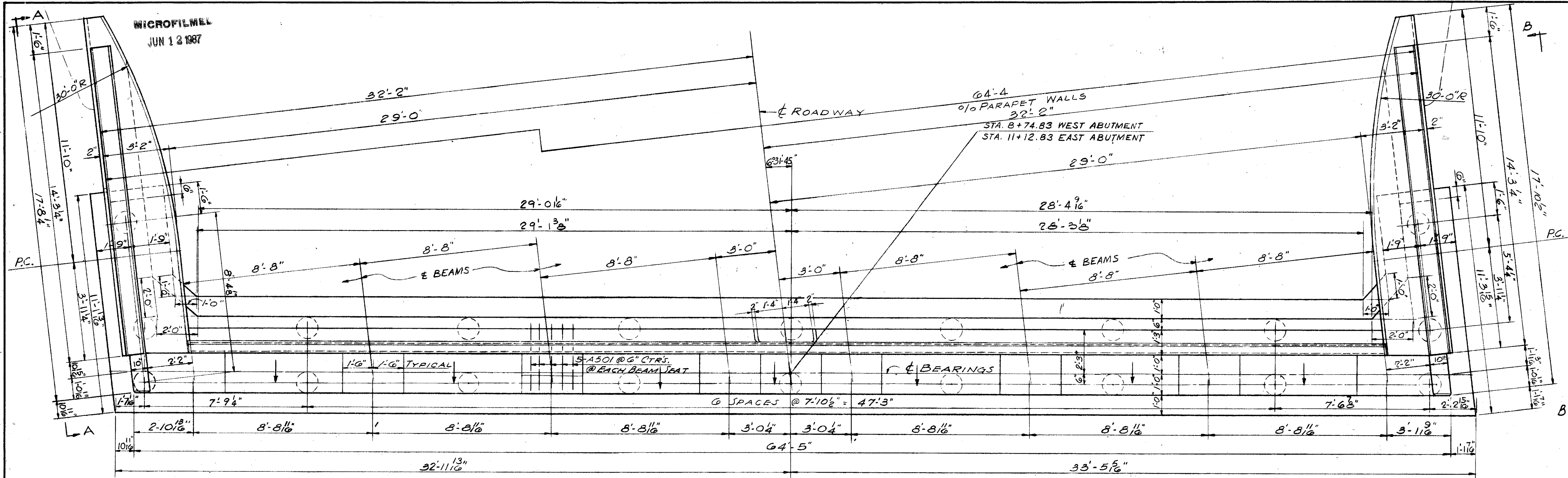


MICROFILMED
JUN 12 1987

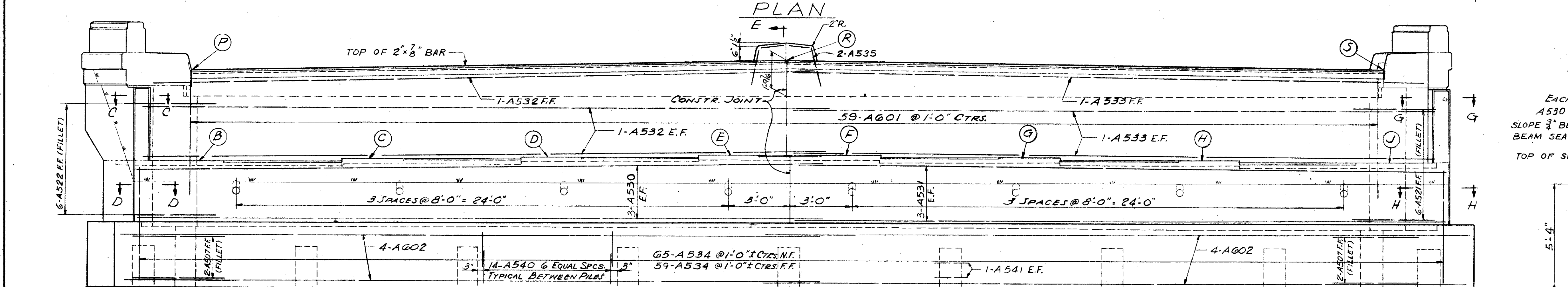
FED. RD. DIVISION	STATE	PROJECT
2	OHIO	

(212
228)

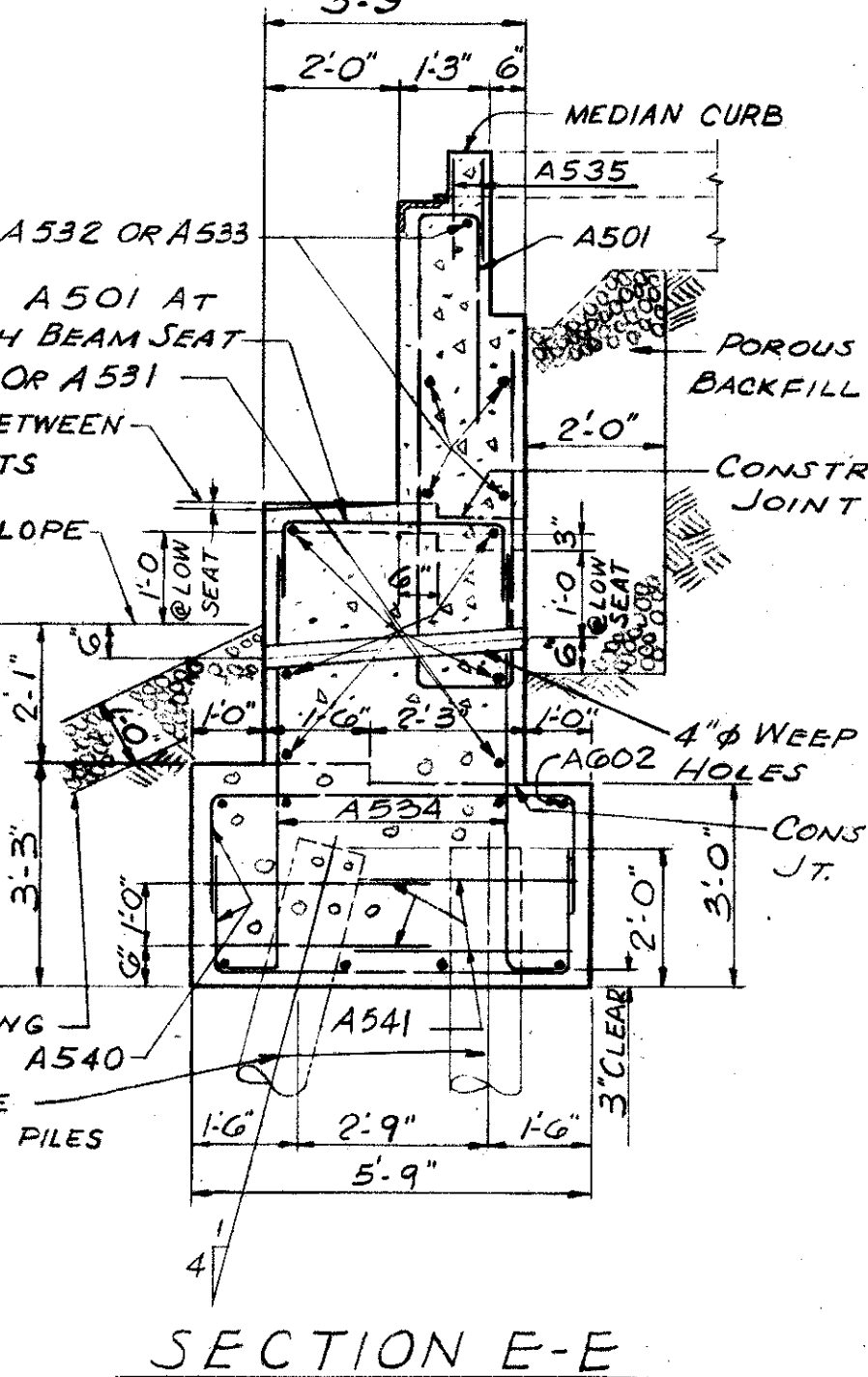
LAKE COUNTY
LAK-44-1.70



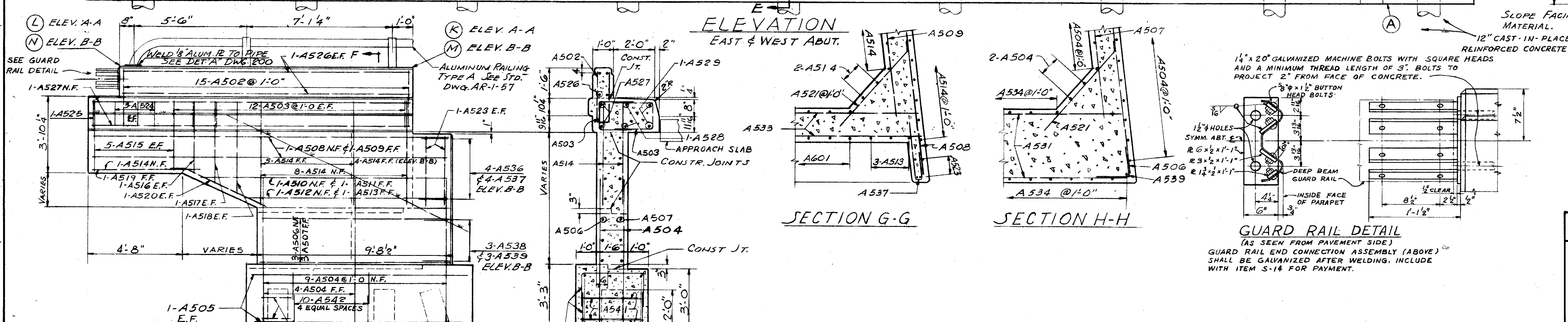
PLAN



ELEVATION

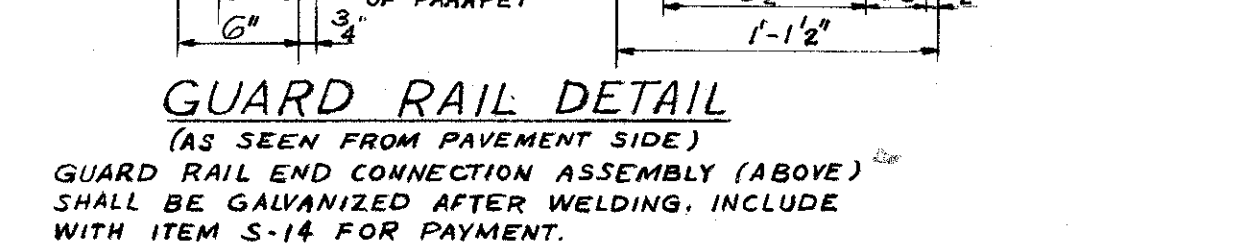


SECTION E-E



SECTION G-G

SECTION H-H



GUARD RAIL DETAIL

SEE DWG. 200 FOR NOTES.

TRYGVE HOFF & ASSOCIATES
ENGINEERS
1922 EAST 107TH STREET CLEVELAND, OHIO
ABUTMENT DETAILS
BRIDGE NO. LAK-44-0411
S.R. 44 UNDER S.R. 84
LAKE COUNTY S.R. 44
STA. 217+54.03
SCALE DATE
DESIGNED DRAWN TRACED CHECKED REVIEWED DATE REVISED
CAT CAT GLP A.J. 4-24-58

ELEVATIONS	A	B	C	D	E	F	G	H	J	K	L	M	N	P	R	S
EAST ABUT.	746.86	753.19	753.30	753.45	753.59	753.59	753.45	753.30	753.17	760.19	760.24	760.16	760.21	757.83	758.27	757.81
WEST ABUT.	746.08	752.41	752.54	752.69	752.83	752.83	752.69	752.54	752.41	759.39	759.34	759.42	759.37	757.03	757.49	757.05

ELEVATION A-A (SHOWN)
ELEVATION B-B (OPPOSITE & AS NOTED)

SECTION F-F