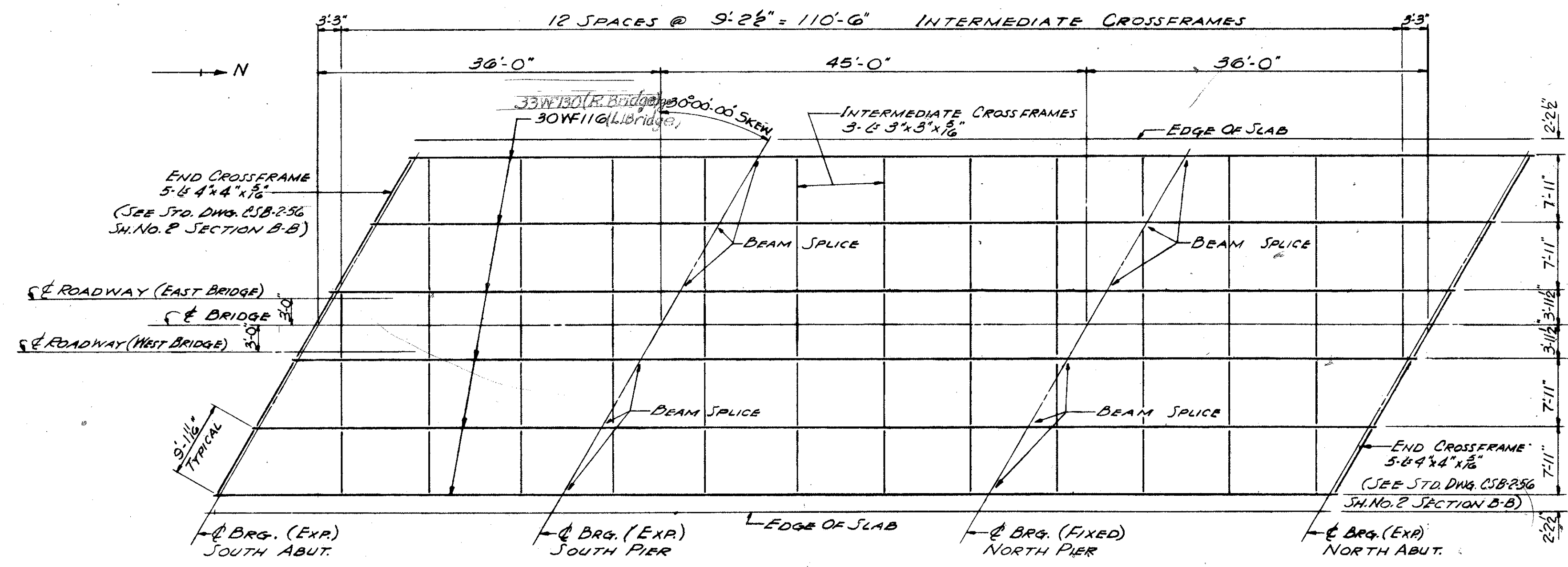


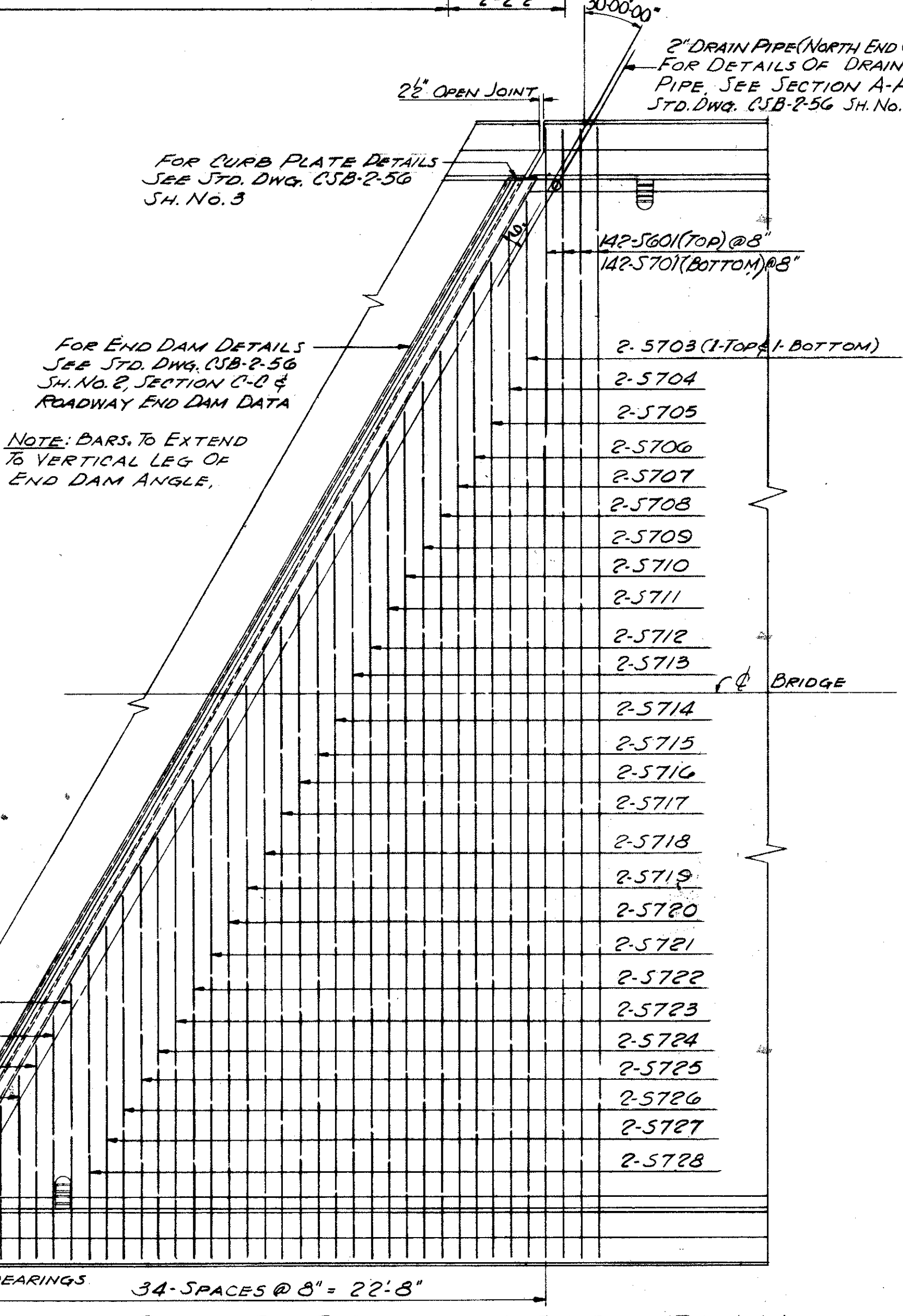
BEAM SPLICE WELDING PROCEDURE

BUTT-WELD THE BEAM FLANGES & WEB, USING THE FOLLOWING SEQUENCE: MAKE ONE PASS ON EACH FLANGE, THEN ONE ON THE WEB, REPEAT UNTIL WELDS ARE COMPLETED. FOR DETAILS SEE STD. DWG. CSB-2-56 SH. NO. 3. NO SPLICE PLATES ARE REQUIRED.

TRANSVERSE SECTION (RIGHT HALF ONLY SHOWN)

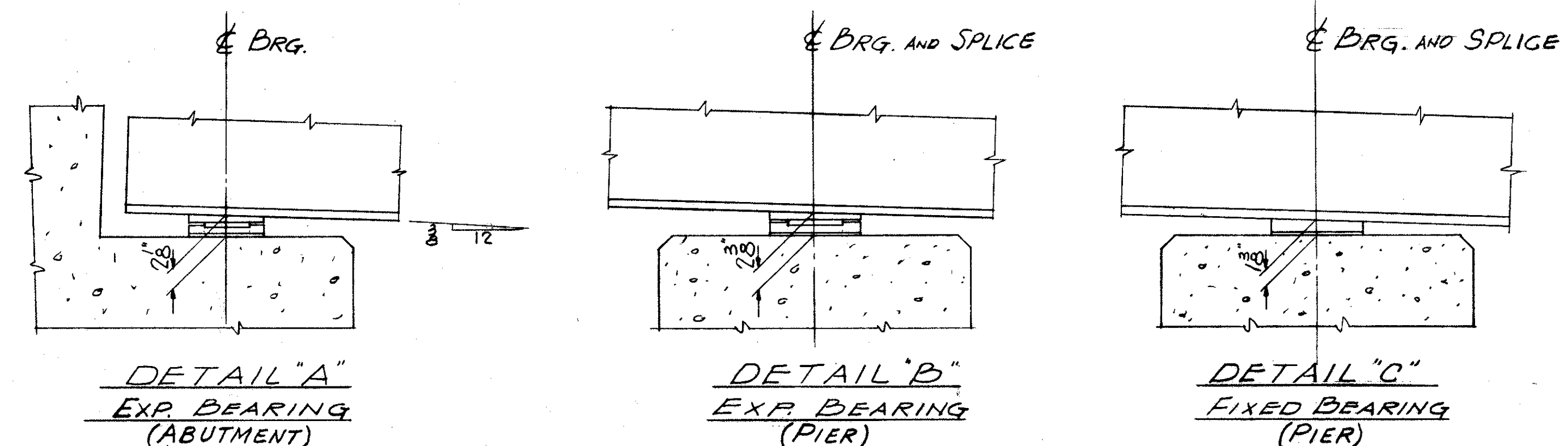


FRAMING PLAN



NOTES

FOR NOTES SEE DWG. 215 FOR WELDED BUTT JOINT IN SUPERSTRUCTURE END DAM ANGLES AT E OF ROADWAY, SEE STD. DWG. CSB-2-56 SH. NO. 2.



TRYGVE HOFF & ASSOCIATES
ENGINEERS
1922 EAST 107TH STREET CLEVELAND, OHIO

SUPERSTRUCTURE DETAILS

BRIDGE NO. LAK-44-0353, L&R
SR. 44 OVER KELLOGG CREEK
LAKE COUNTY SR. 44
STA. 187+50

SCALE	DATE
DESIGNED	DRAWN
TRACED	CHECKED
REVIEWED	DATE
REVISED	

C.A.T. C.A.T. A.J. G.L.P. 8-15-58