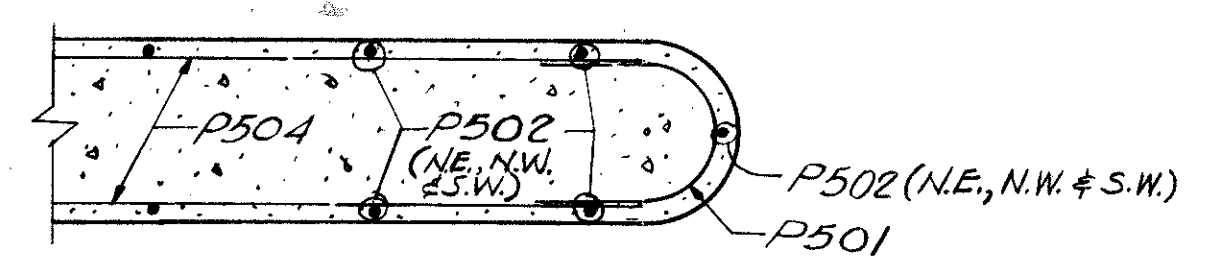
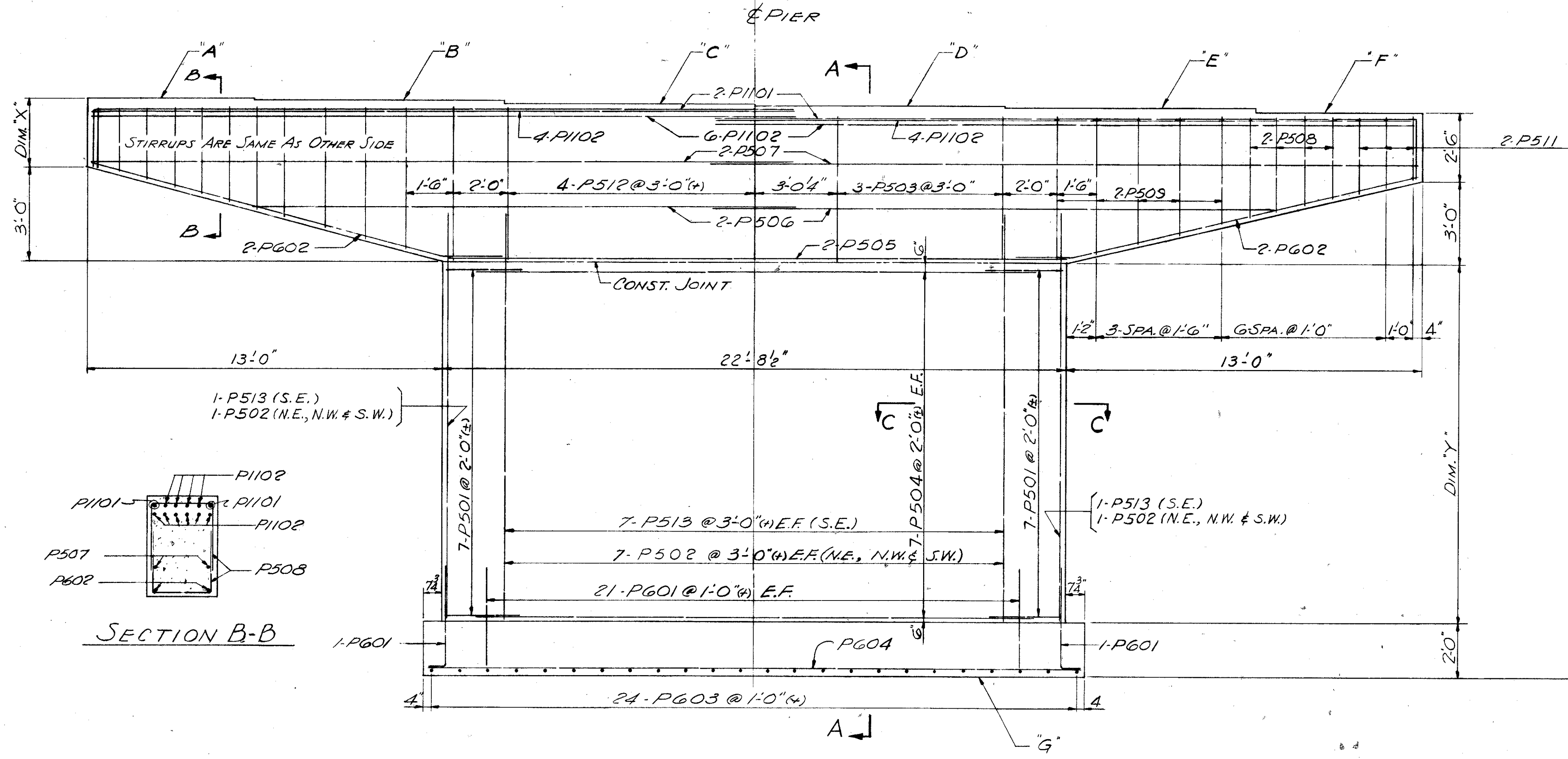


PLAN

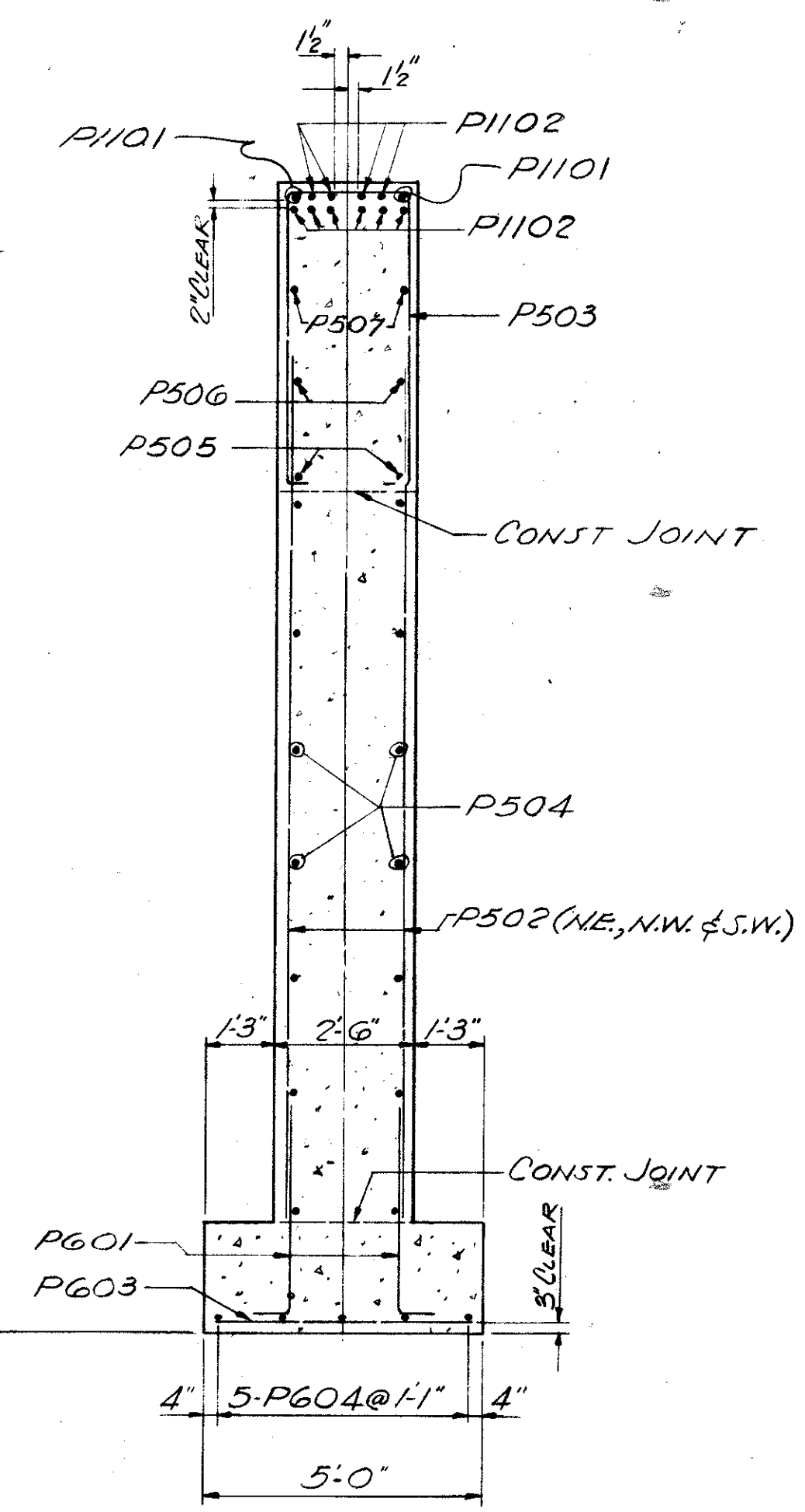


SECTION C-C

ANCHOR BARS-1/2" x 1'-3"
(12 REQD. PER PIER)
SET 1'-0" INTO CONCRETE



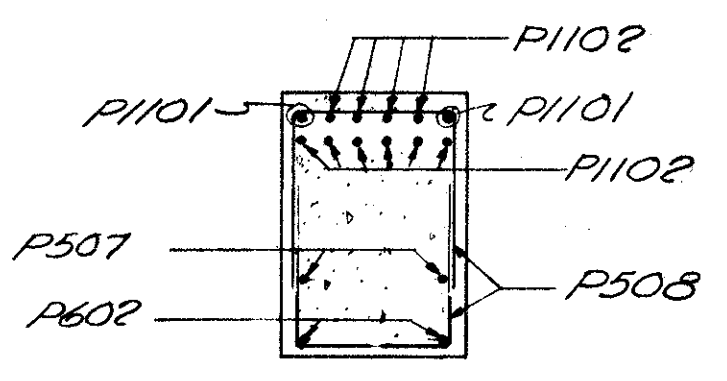
ELEVATION



SECTION A-A

NOTE
SPECIAL CARE SHALL BE TAKEN IN PLACING REINFORCING STEEL IN THE CENTER OF PIER CAP SO THAT IT WILL NOT INTERFERE WITH BEARING ANCHOR BOLTS.

1-P513 (S.E.)
1-P502 (N.E., N.W. & S.W.)



SECTION B-B

TRYGVE HOFF & ASSOCIATES
ENGINEERS
1922 EAST 107TH STREET CLEVELAND, OHIO

PIER DETAILS
BRIDGE NO. LAK-44-0353, L#R
SR 44 OVER KELLOGG CREEK
LAKE COUNTY SR 44
STA. 187 + 50

DESIGNED	DRAWN	TRACED	CHECKED	REVIEWED	DATE
C.A.T.	C.A.T.		A.J.	G.L.P.	8-15-58

ELEVATIONS		A"	B"	C"	D"	E"	F"	G"	DIM. X"	DIM. Y"
EAST BRIDGE	NORTH PIER	702.24	702.23	702.22	702.18	701.92	701.66	680.00	3'-1"	14'-1 1/8"
	SOUTH PIER	703.49	703.48	703.47	703.43	703.17	702.91	680.00	3'-1"	15'-4 1/8"
WEST BRIDGE	NORTH PIER	700.80	700.79	700.78	700.54	700.28	700.02	680.00	3'-3 3/8"	12'-6 1/4"
	SOUTH PIER	702.05	702.04	702.03	701.79	701.53	701.27	680.00	3'-3 3/8"	13'-9 1/4"