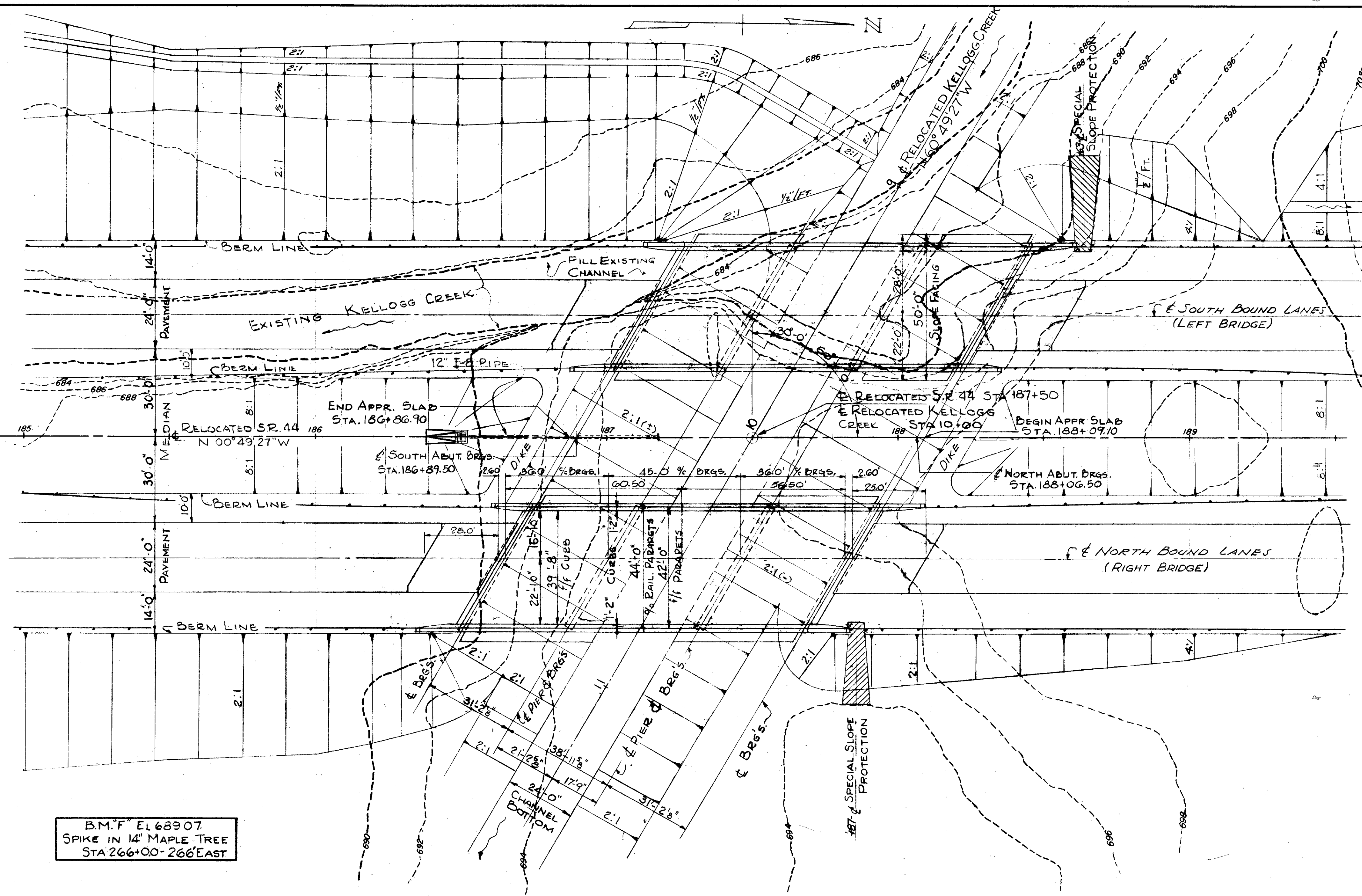


MICROFILM  
JUN 12 1967

FED. RD. DIVISION	STATE	PROJECT	
2	OHIO		

LAKE COUNTY  
LAK-44-170

204  
228



**PROPOSED STRUCTURES**

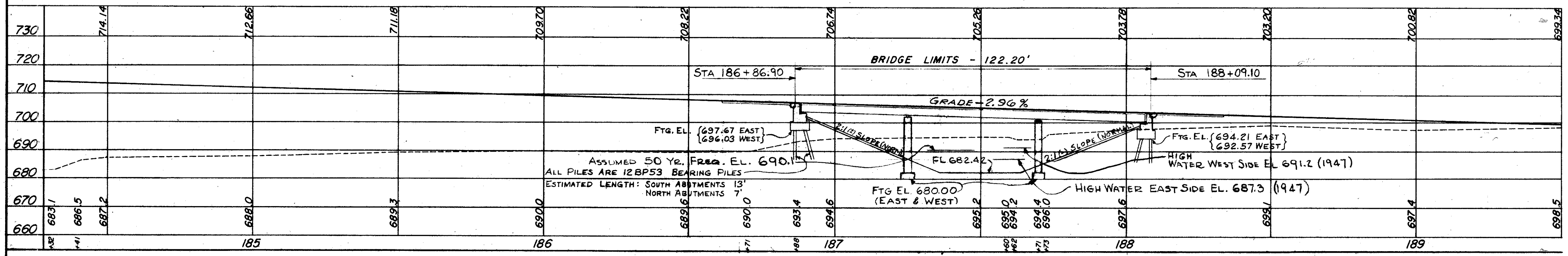
TYPE: CONTINUOUS STEEL BEAM WITH REINF. CONC. DECK & SUBSTRUCTURE  
 SPANS: 36.0', 45.0', 36.0', EAST & WEST BRIDGES  
 ROADWAY: 39'-8" f/f of 1'-0" CURBS  
 EAST & WEST BRIDGES  
 LOAD FREQUENCY: CF=2000 (57) ADEQUATE FOR A.A.S.H.O. ALTERNATE LOADING  
 WEARING SURFACE: 1" MONOLITHIC CONC.  
 APPROACH SLABS: AS-1-54 25' LONG  
 ALIGNMENT: TANGENT  
 SKEW: 30°-00' L.F.

DRAINAGE AREA = 12.2 Sq. Mi.  
 Q<sub>25</sub> = 1700 CFS } FROM U.S.G.S.  
 Q<sub>50</sub> = 1950 CFS }  
 LOCATION: 41°-41'-08" LAT; 81°-15'-19.5" LONG.  
 U.S.G.S. MENTOR QUAD (7.5 MIN SERIES)

**FOUNDATION SOUNDINGS:**  
 FOUNDATION DESIGN AND FOUNDATION QUANTITIES ARE BASED ON A STUDY OF STANDARD PENETRATION TESTS AND SOIL SAMPLING MADE AT THE SITE. THIS INFORMATION MAY BE INSPECTED IN THE OFFICE OF THE BUREAU OF BRIDGES IN COLUMBUS OR IN THE DIVISION OFFICE, BUT THE STATE DOES NOT GUARANTEE THE ACCURACY THEREOF.

**NOTE:**  
 FOR DETAIL OF SPECIAL SLOPE PROTECTION SEE SHEET 6

B.M. F' EL 689.07  
 SPIKE IN 14" MAPLE TREE  
 STA 266+00-266 EAST



TRYGVE HOFF & ASSOCIATES  
 ENGINEERS  
 1922 EAST 107TH STREET CLEVELAND, OHIO

**SITE PLAN**

BRIDGE NO. LAK-44-0353, L&R  
 S.R. 44 OVER KELLOGG CREEK  
 LAKE COUNTY S.R. 44  
 STA. 187+50

SCALE 1"=20' DATE

DESIGNED	DRAWN	TRACED	CHECKED	REVIEWED	DATE	REVISED
JWP	JWP		Ad	T.L.L.	10/11/58	