

MICROFILMEL
JUN 11 1987

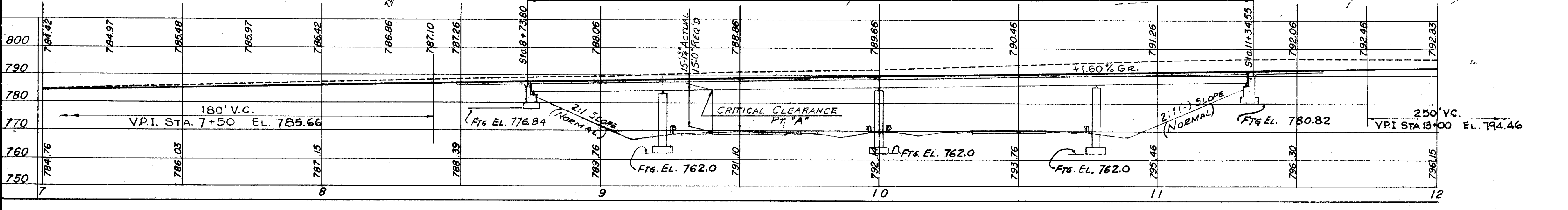
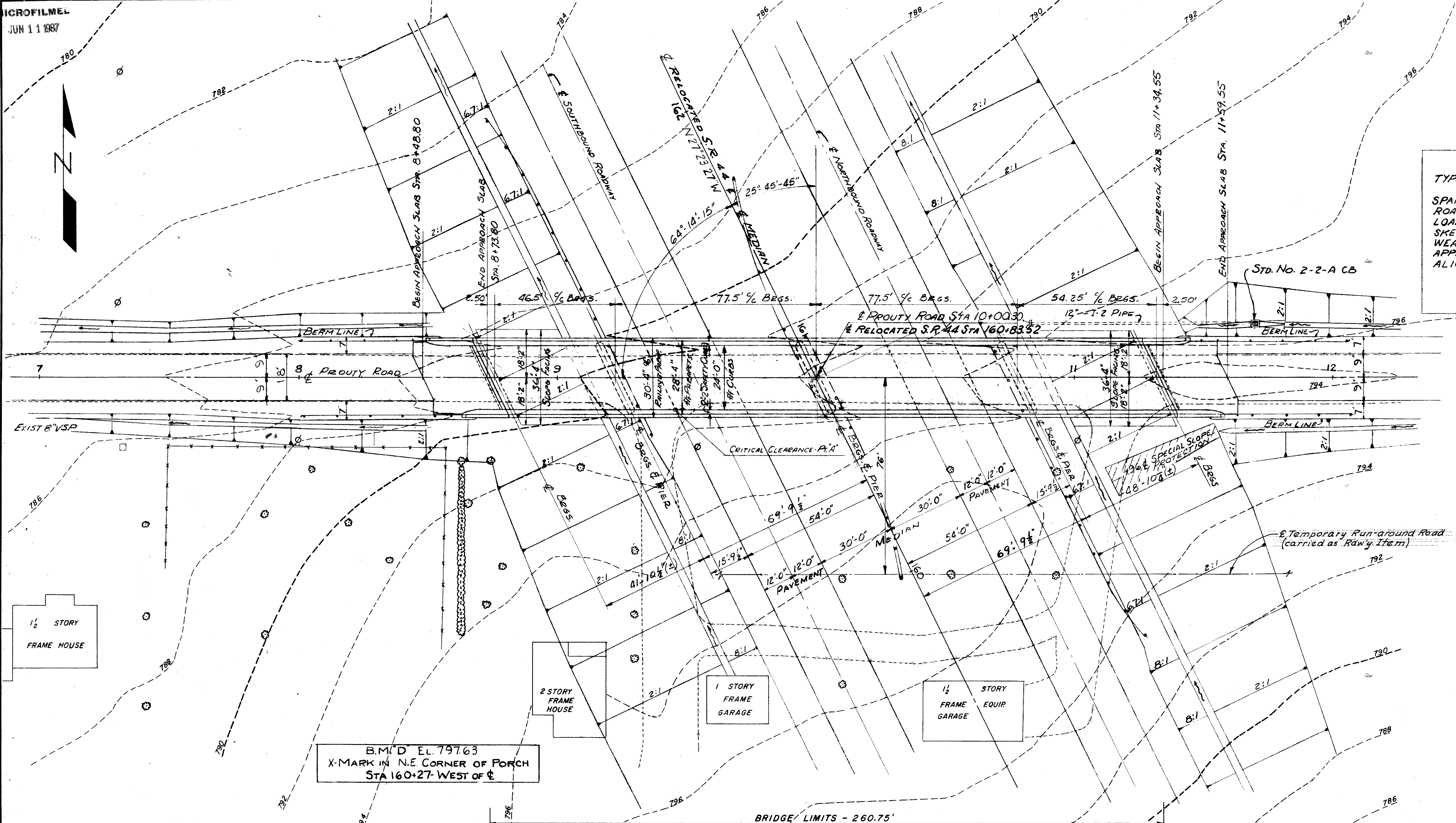
FED. RD. DIVISION	STATE	PROJECT	198 228
2	OHIO		

LAKE COUNTY
LAK-44-1.70

PROPOSED STRUCTURE
 TYPE: CONTINUOUS STEEL BEAM WITH REINF. CONC. DECK AND SUBSTRUCTURE
 SPAN: 46.5', 77.5', 77.5', 54.25'
 ROADWAY: 24'-0" W/F OF 2'-2" SAFETY CURBS
 LOAD FREQUENCY: CF 130 (57)
 SKEW: 25° 45' 45" D.F.
 WEARING SURFACE: 3" MONOLITHIC CONC.
 APPROACH SLABS: 25' LONG
 ALIGNMENT: TANGENT

FOUNDATION SOUNDINGS:
 FOUNDATION DESIGN AND FOUNDATION QUANTITIES ARE BASED ON A STUDY OF STANDARD PENETRATION TESTS AND SOIL SAMPLING MADE AT THE SITE. THIS INFORMATION MAY BE INSPECTED IN THE OFFICE OF THE BUREAU OF BRIDGES IN COLUMBUS OR IN THE DIVISION OFFICE, BUT THE STATE DOES NOT GUARANTEE THE ACCURACY THEREOF.

NOTE:
 FOR DETAIL OF SPECIAL SLOPE PROTECTION SEE SHEET 6



SCALE: 1"=20'

TRYGVE HOFF & ASSOCIATES
 ENGINEERS
 1922 EAST 107TH STREET CLEVELAND, OHIO

SITE PLAN
 BRIDGE NO. LAK-44-0304
 SR. 44 UNDER PROUTY ROAD
 LAKE COUNTY SR. 44
 STA. 160+83.52

DESIGNED	DRAWN	TRACED	CHECKED	REVIEWED	DATE	REVISED
R.D.	R.D.		JWP	T.L.L.	10/1/58	