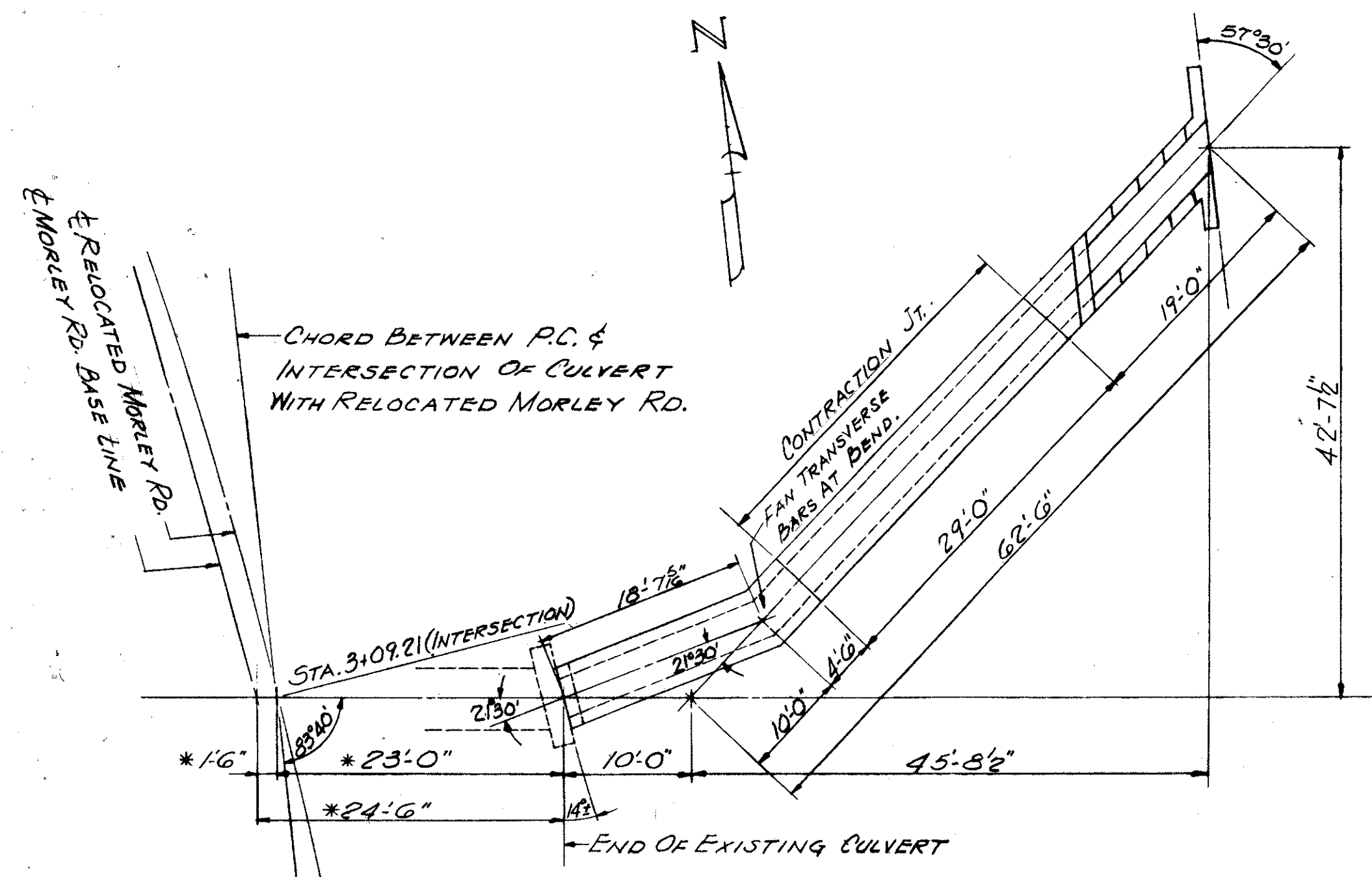


LAKE COUNTY
LAK-44-170

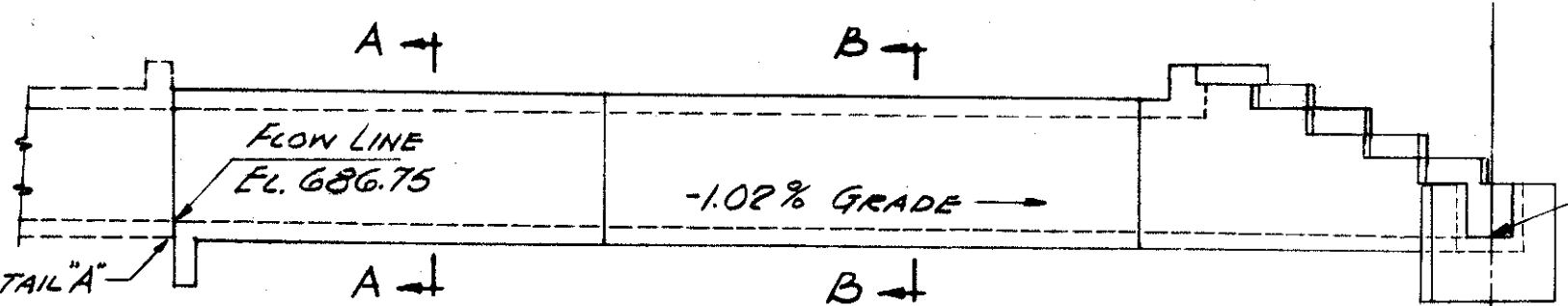
NOTE:
ALL LONGITUDINAL BARS
C504 FOR SECTION B-B



GENERAL PLAN

* VERIFY THESE DIMENSIONS IN THE FIELD.

P.C. RELOCATED MORLEY RD.
STA. 1+33.11

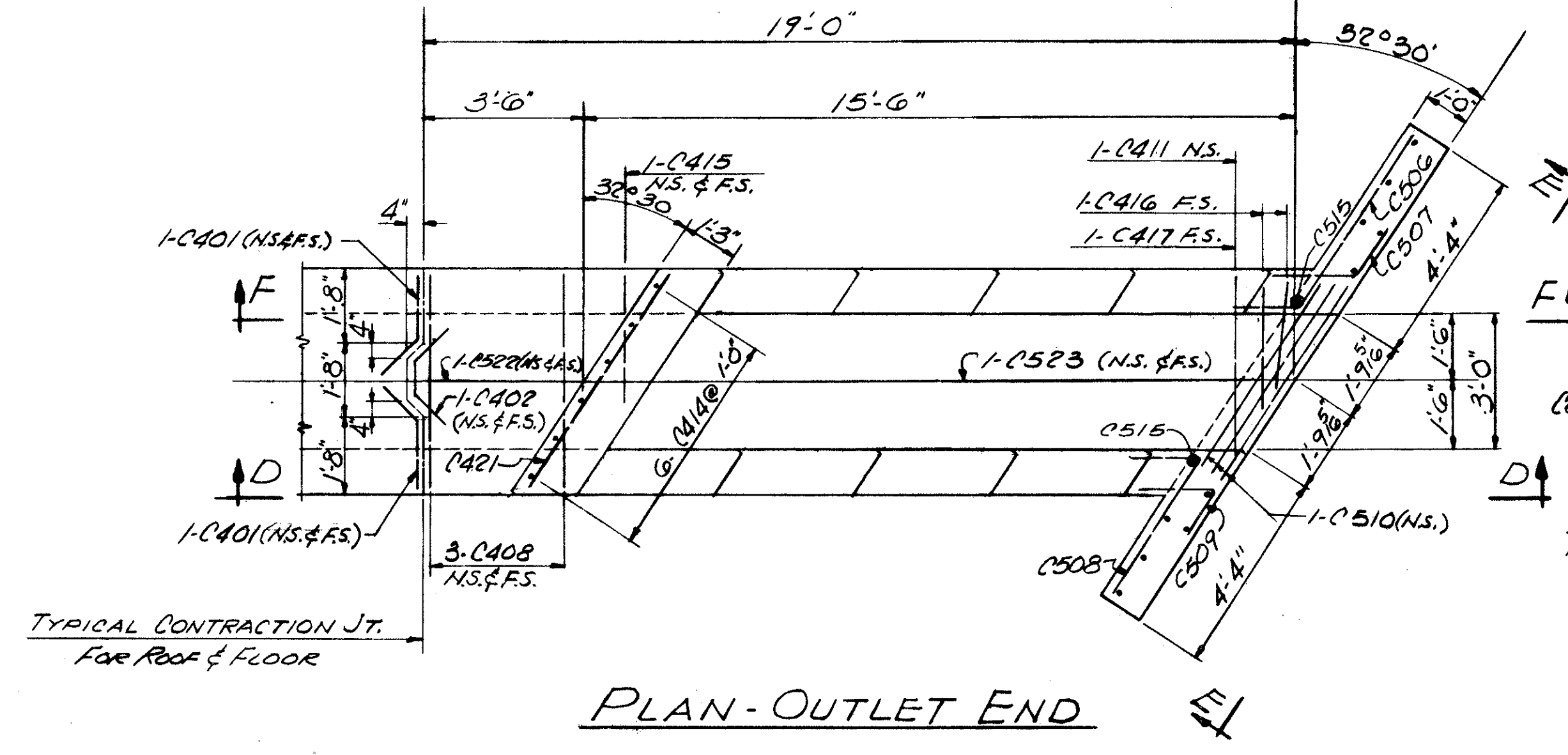


GENERAL ELEVATION (DEVELOPED)

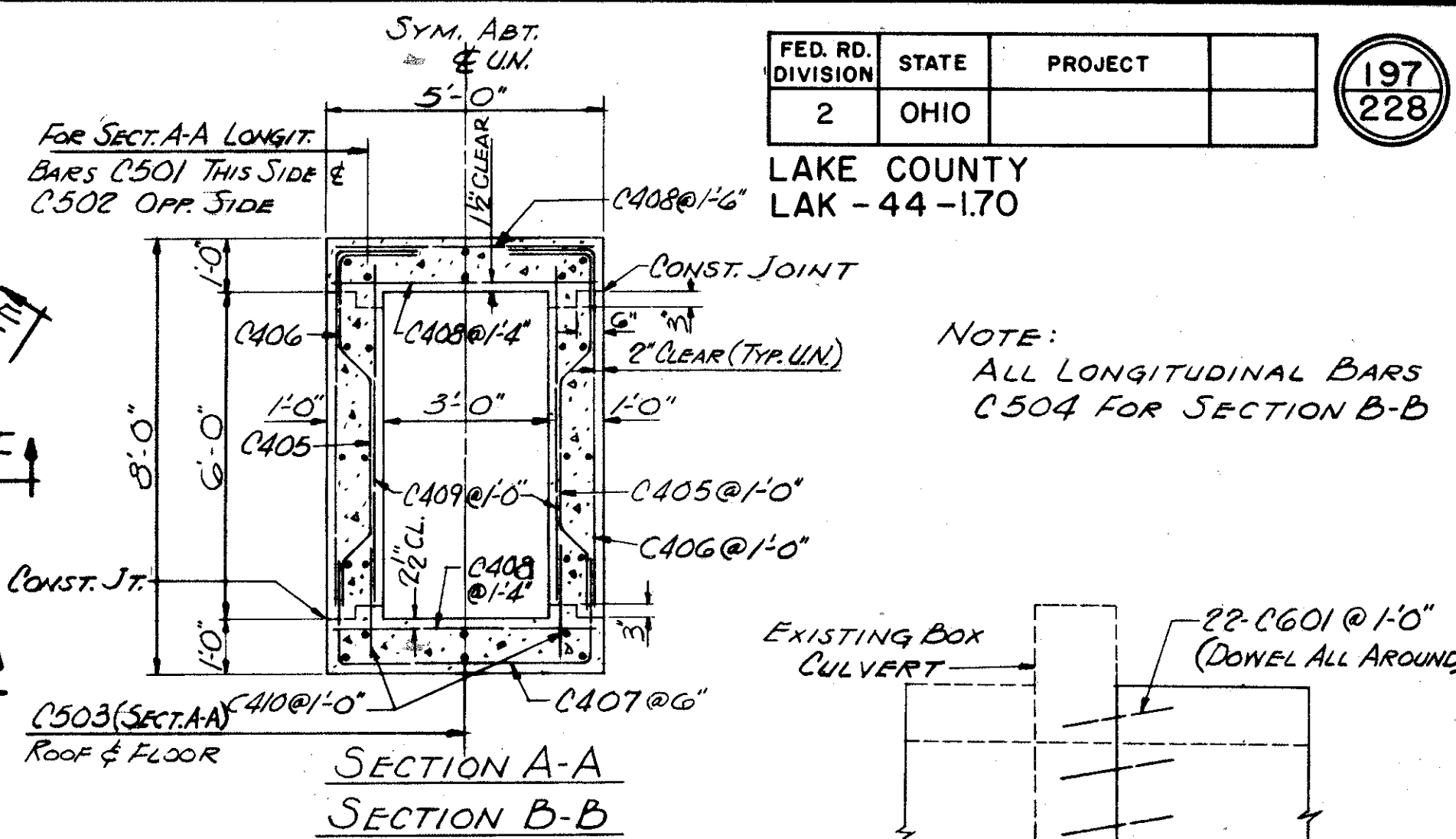
REINFORCING STEEL LIST				BENDING DIAGRAM			
MARK	No. REQS.	LENGTH	SHAPE WEIGHT	MARK	No. REQS.	LENGTH	SHAPE WEIGHT
C601	22	20"	STR. 66	C401	16	2'-10"	BENT 31
C501	10	23'-6"	BENT 245	C402	8	4'-0"	22
C502	10	21'-6"	BENT 224	C403	16	3'-10"	42
C503	4	22'-8"	BENT 95	C404	8	5'-0"	27
C504	24	28'-6"	STR. 713	C405	114	9'-0"	685
C505	3	11'-10"	STR. 37	C406	114	8'-6"	647
C506	3	3'-5"	BENT 17	C407	140	8'-2"	BENT 769
C507	3	3'-3"	10	C408	139	4'-8"	STR. 435
C508	3	4'-4"	Z 14	C409	114	6'-0"	475
C509	3	3'-3"	BENT 10	C410	114	1'-10"	139
C510	3	9'-6"	STR. 30	C411	13	3'-11"	34
C511	2	7'-6"	16	C412	10	6'-0"	STR. 40
C512	2	6'-2"	13	C413	10	4'-0"	BENT 27
C513	2	4'-11"	10	C414	6	3'-6"	BENT 14
C514	2	3'-8"	8	C415	2	3'-0"	STR. 4
C515	2	2'-5"	5	C416	2	4'-10"	BENT 7
C516	6	17'-0"	107	C417	1	5'-10"	BENT 4
C517	4	14'-10"	62	C418	12	7'-9"	STR. 63
C518	4	11'-10"	49	C419	12	6'-5"	52
C519	2	9'-0"	19	C420	12	5'-2"	42
C520	6	19'-10"	124	C421	3	5'-6"	11
C521	2	17'-10"	37	C422	3	2'-8"	STR. 15
C522	2	4'-6"	9	TOTAL FOR CULVERT			5564
C523	2	18'-8"	STR. 39	REPLACEMENT			
				RE601	1	5'-11"	STR.
				RE501	1	5'-7"	STR.
				RE401	1	5'-3"	STR.

NOTES: BAR SIZE IS INDICATED IN THE BAR MARK. THE FIRST DIGIT WHERE THREE DIGITS ARE USED, AND THE FIRST TWO DIGITS WHERE FOUR ARE USED, INDICATES THE BAR SIZE NUMBER. FOR EXAMPLE C601 IS A No. 6 SIZE BAR.

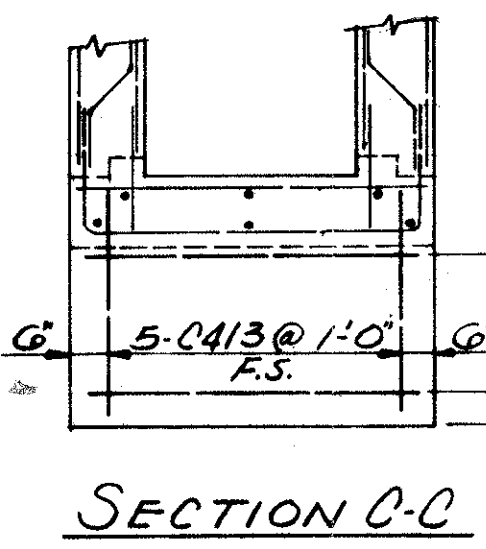
REPLACEMENT BARS: IF REINFORCING BARS ARE FABRICATED FROM STEEL WHICH HAS PREVIOUSLY BEEN TESTED AND APPROVED BY THE OHIO HIGHWAY TESTING LABORATORY, TEST SAMPLES AS PROVIDED IN SEC. 5-4.02 NEED NOT BE FURNISHED AND REPLACEMENT BARS WILL NOT BE REQUIRED.



PLAN-OUTLET END

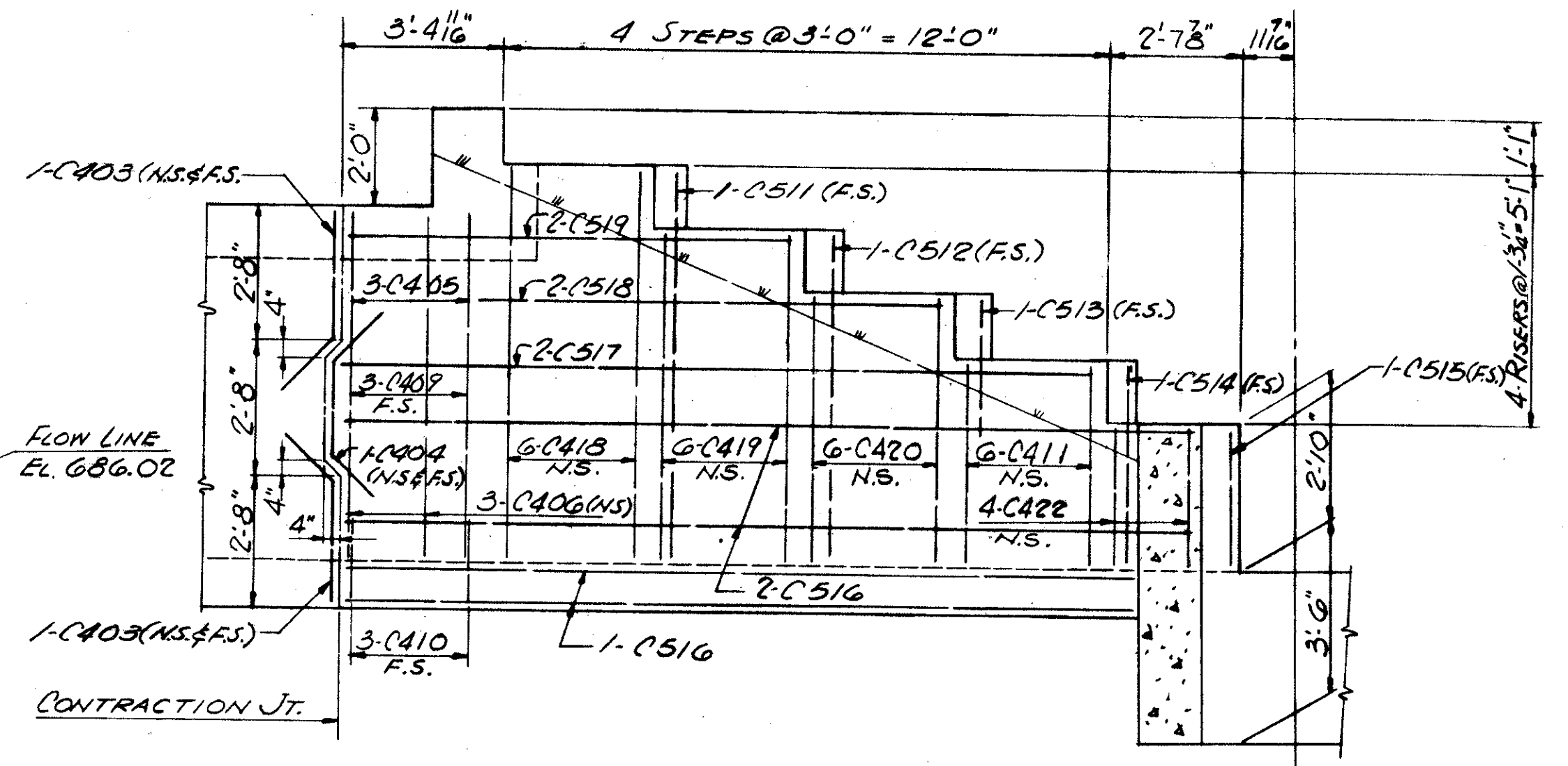


SECTION A-A
SECTION B-B

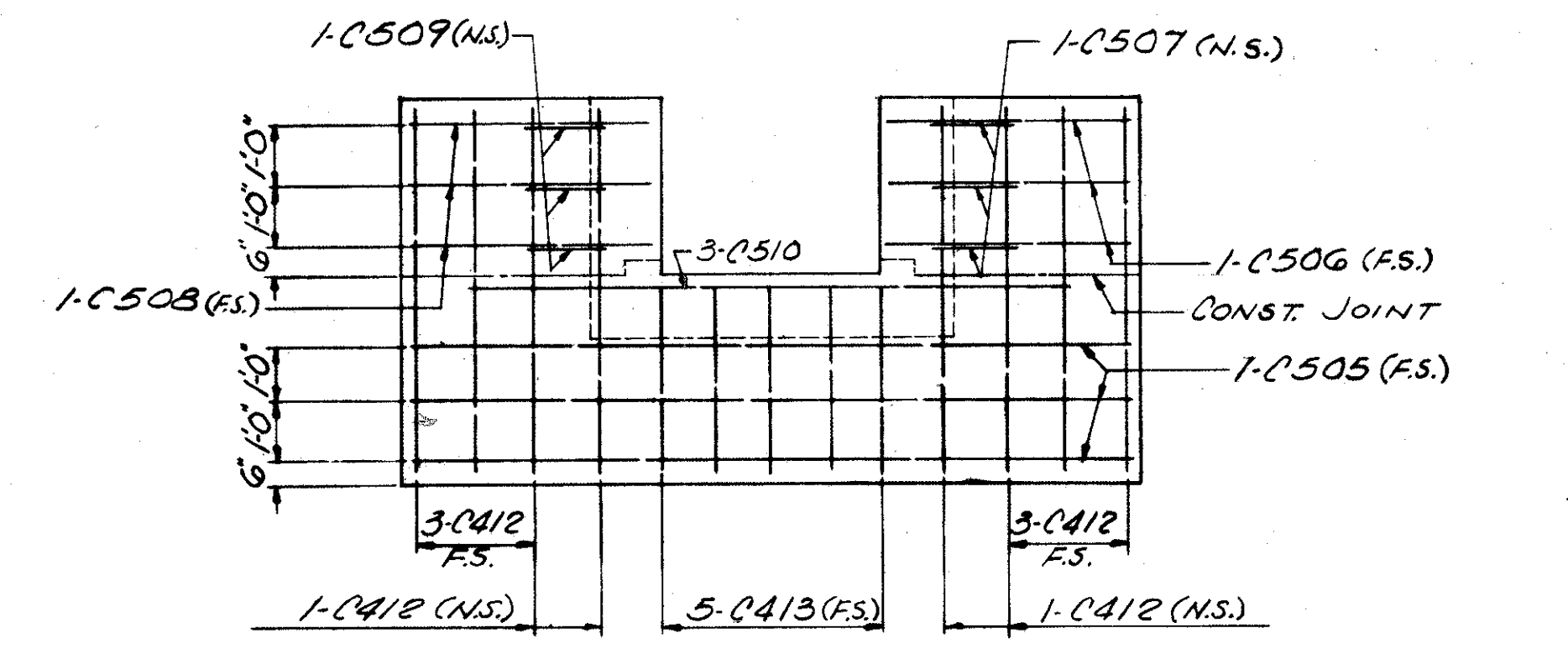


SECTION C-C

ENL'D DETAIL 'A'

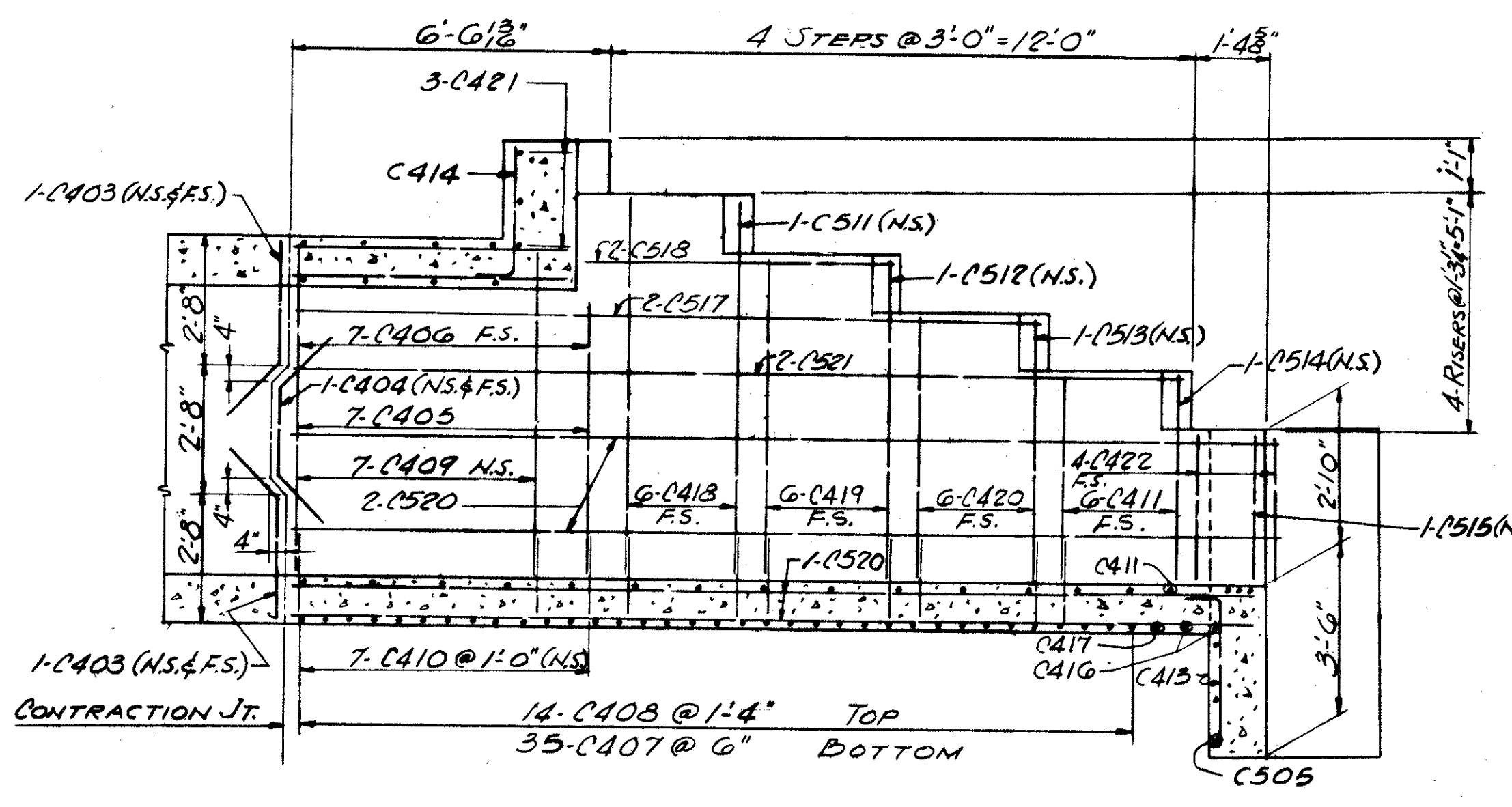


SECTION D-D



ELEVATION E-E

FOUNDATION MATERIAL OF APPROXIMATELY UNIFORM BEARING CAPACITY IS CONTEMPLATED. SPOTS OF SOFT EARTH SHALL BE REMOVED AND REPLACED WITH THOROUGHLY COMPACTED GRANULAR MATERIAL. EMBANKMENT SHALL BE PLACED SYMMETRICALLY ON BOTH SIDES OF THE CULVERT AFTER THE TOP SLAB IS IN PLACE. EMBANKMENT OVER THE BARREL SHALL BE PLACED IN HORIZONTAL LAYERS SIMULTANEOUSLY WITH THAT ON EACH SIDE OF CULVERT.



SECTION F-F

TRYGVE HOFF & ASSOCIATES
ENGINEERS
1922 EAST 107TH STREET CLEVELAND, OHIO

ADDITION TO BOX CULVERT
STA. 3+09.21-RELOCATED MORLEY RD.
GENERAL PLAN, ELEVATION,
DETAILS & REINFORCING
STEEL LIST

SCALE	DATE
DESIGNED	DRAWN
TRACED	CHECKED
REVIEWED	DATE
GLP	CAT. 9-30-58