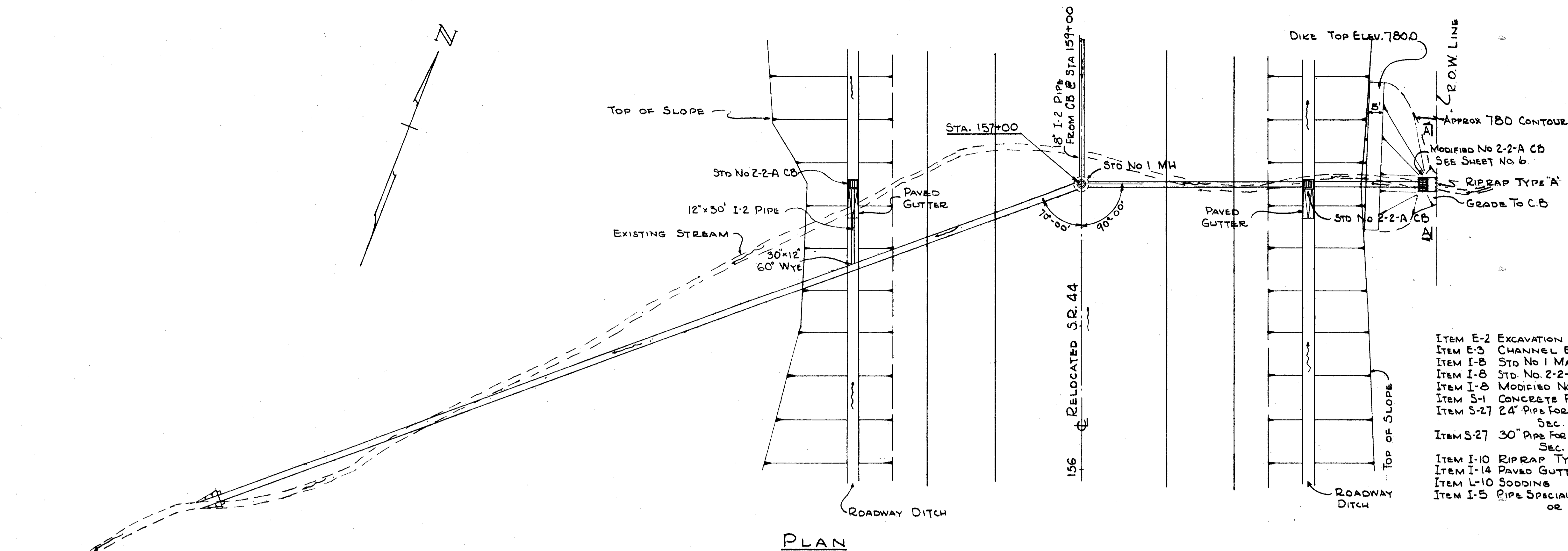
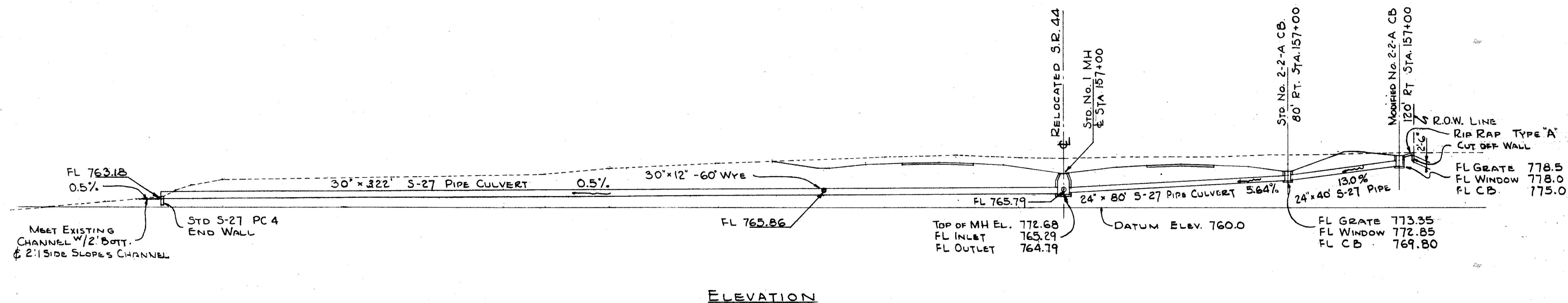
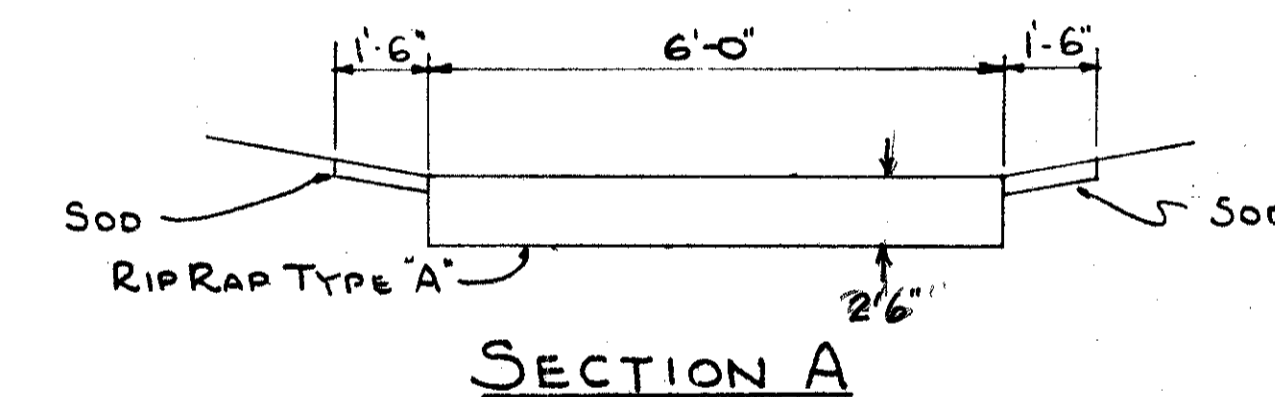


DRAINAGE AREA = 9.8 AC
Q₂₅ = 24 CFS



ESTIMATED QUANTITIES

ITEM E-2 EXCAVATION FOR STRUCTURES	556	Cu. Yds.
ITEM E-3 CHANNEL EXCAVATION	11	Cu. Yds
ITEM I-8 STD No 1 MANHOLE	1	EACH
ITEM I-8 STD. No. 2-2-A CATCH BASIN	1	EACH
ITEM I-8 MODIFIED No 2-2-A CATCH BASIN	1	EACH
ITEM S-1 CONCRETE FOR STRUCTURES CLASS "E"	0.51	Cu. Yds.
ITEM S-27 24" PIPE FOR ROADWAY CULVERT SEC. M-6.6(b) OR SEC. M-6.8(b)	120	LIN. FT.
ITEM S-27 30" PIPE FOR ROADWAY CULVERT SEC. M-6.6(b) OR SEC. M-6.8(b)	322	LIN. FT.
ITEM I-10 RIPRAP TYPE "A"	2.67	Sq. Yds
ITEM I-14 PAVED GUTTER TYPE B (SPECIAL)	10	LIN. FT.
ITEM L-10 SODDING	47	Sq. Yds
ITEM I-5 PIPE SPECIAL 30'x12' 60° WYE BRANCH SEC. M-6.6(b) OR SEC. M-6.8(b)	1	EACH



TRYGVE HOFF & ASSOCIATES
ENGINEERS
1922 EAST 107TH STREET CLEVELAND, OHIO

PIPE CULVERT ⑦

RELOCATED S.R. 44
STA. 157+00

SCALE 1" = 20' DATE

DESIGNED	DRAWN	TRACED	CHECKED	REVIEWED	DATE	REVISED
JWF			JPC	T.L.L.	10/1/58	