

LAKE COUNTY
LAK-44-1.70

ESTIMATED QUANTITIES

ITEM E-2	EXCAVATION FOR STRUCTURES	682 Cu. Yds.
ITEM E-3	CHANNEL EXCAVATION	58 Cu. Yds.
ITEM I-10	RIP-RAP TYPE "A"	304 Sq. Yds.
ITEM I-10	DUMPED ROCK CHANNEL PROTECTION	167 Cu. Yds.
ITEM S-1	CONCRETE FOR STRUCTURES-CLASS "E"	3.1 Cu. Yds.
ITEM S-27	33" PIPE FOR ROADWAY CULVERT SEC. M-6.4(d), 10656	380 LIN. FT.
ITEM L-10	SODDING	84 Sq. Yds.

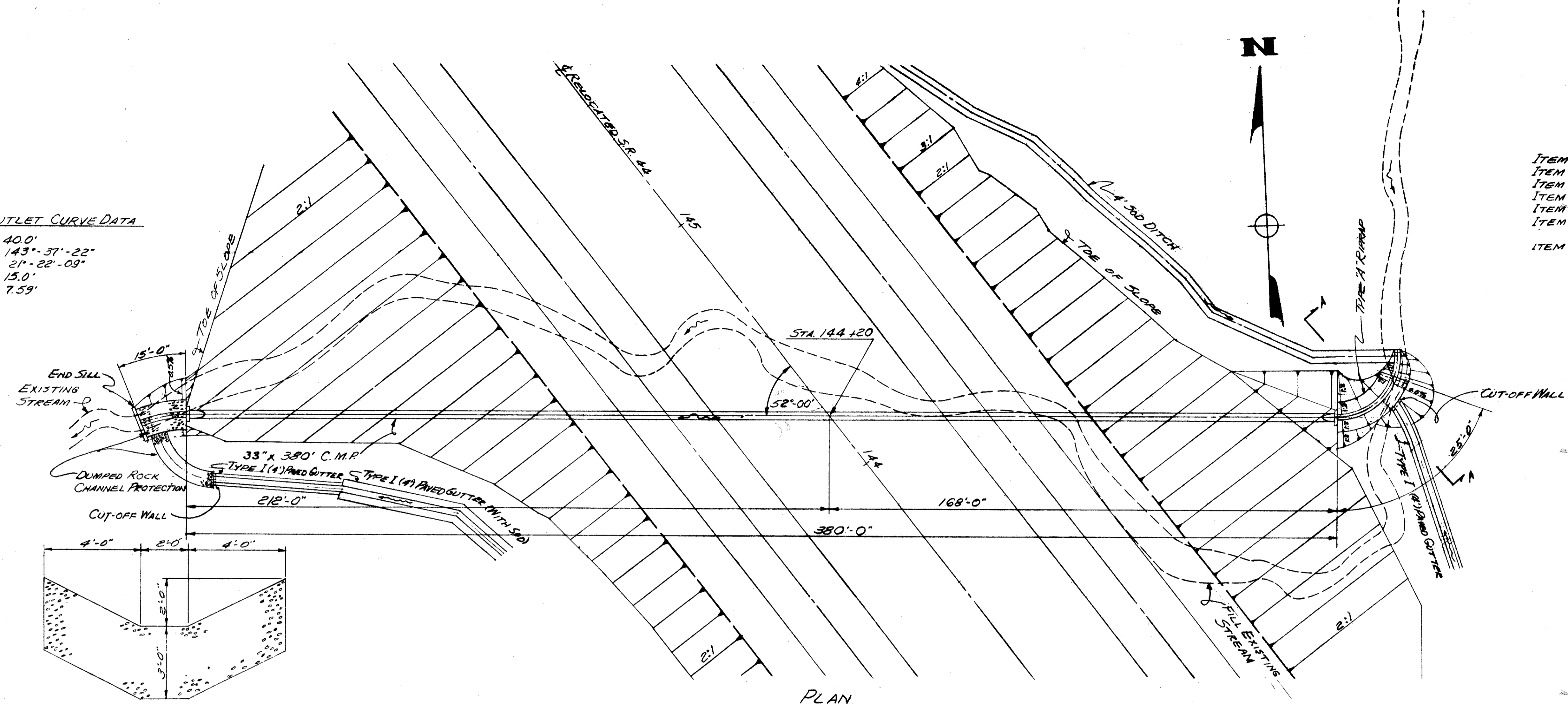
DRAINAGE AREA = 24 ACRES
Q₂₅ = 45 C.F.S.

INLET CURVE DATA

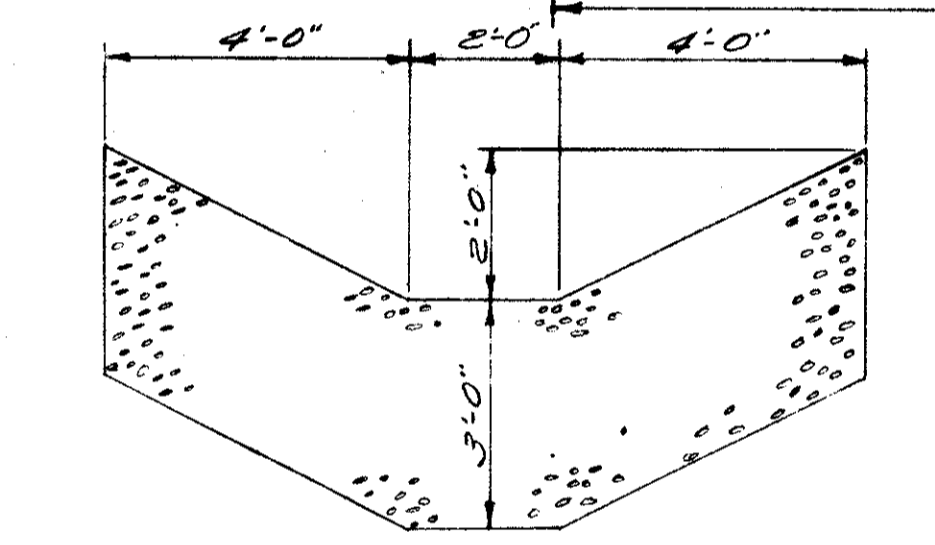
R: 20.0'
Δ: 97°-00"
D: 286'-28".44"
L: 33.86'
T: 22.61'

OUTLET CURVE DATA

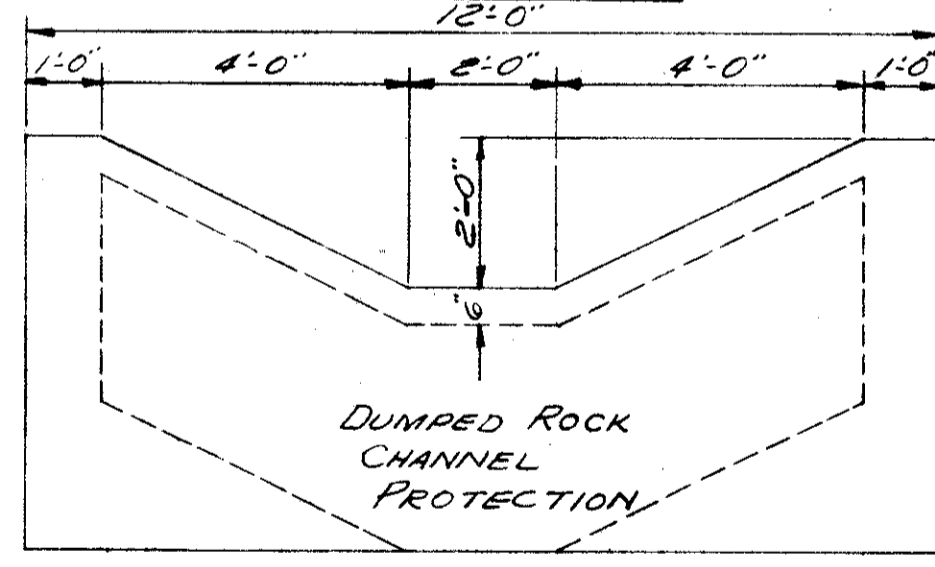
R: 40.0'
D: 143°-37'-22"
Δ: 21°-22'-09"
L: 15.0'
T: 7.59'



PLAN

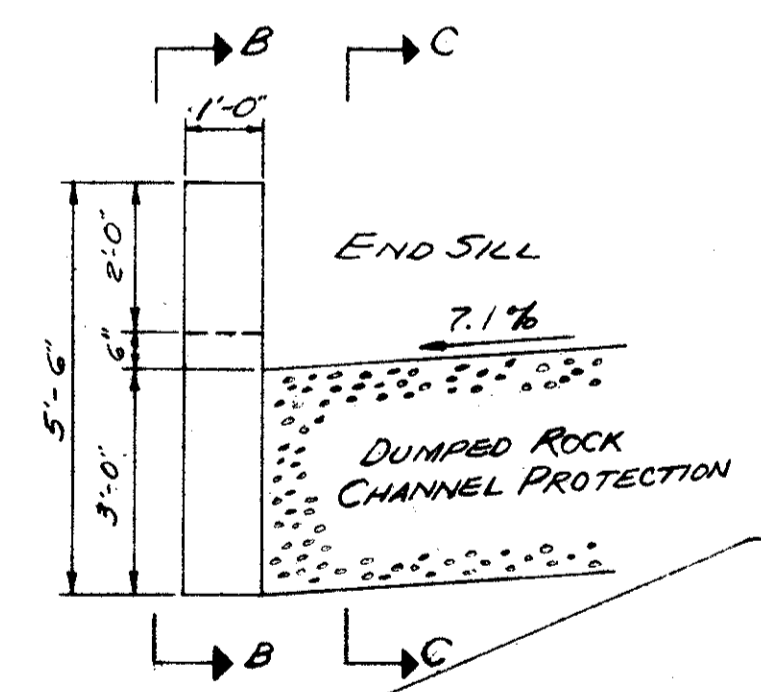


SECTION C-C

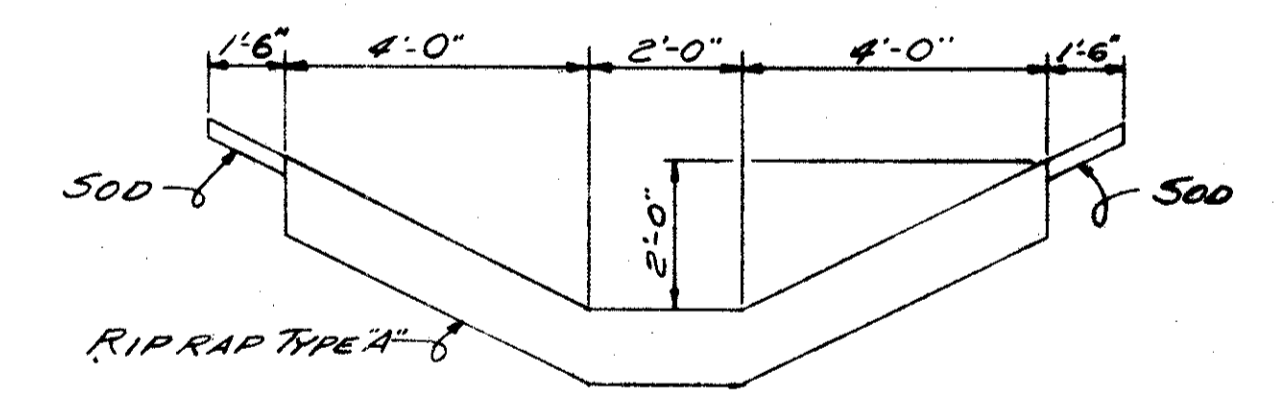


SECTION B-B

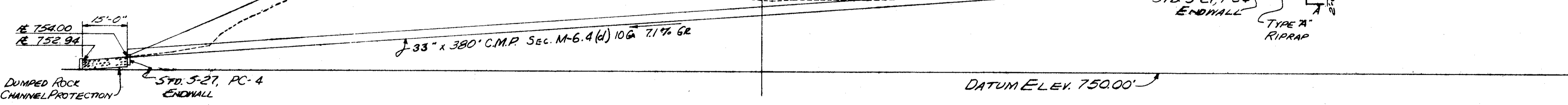
DETAIL OUTLET PROTECTION



END SILL



SECTION A-A



ELEVATION

TRYGVE HOFF & ASSOCIATES
ENGINEERS
1922 EAST 107TH STREET CLEVELAND, OHIO

PIPE CULVERT

RELOCATED S.R. 44
STA. 144+20

SCALE 1"=20' DATE

DESIGNED	DRAWN	TRACED	CHECKED	REVIEWED	DATE	REVISED
JPC			JWP	T.L.L.	10/1/58	