

ESTIMATED QUANTITIES*

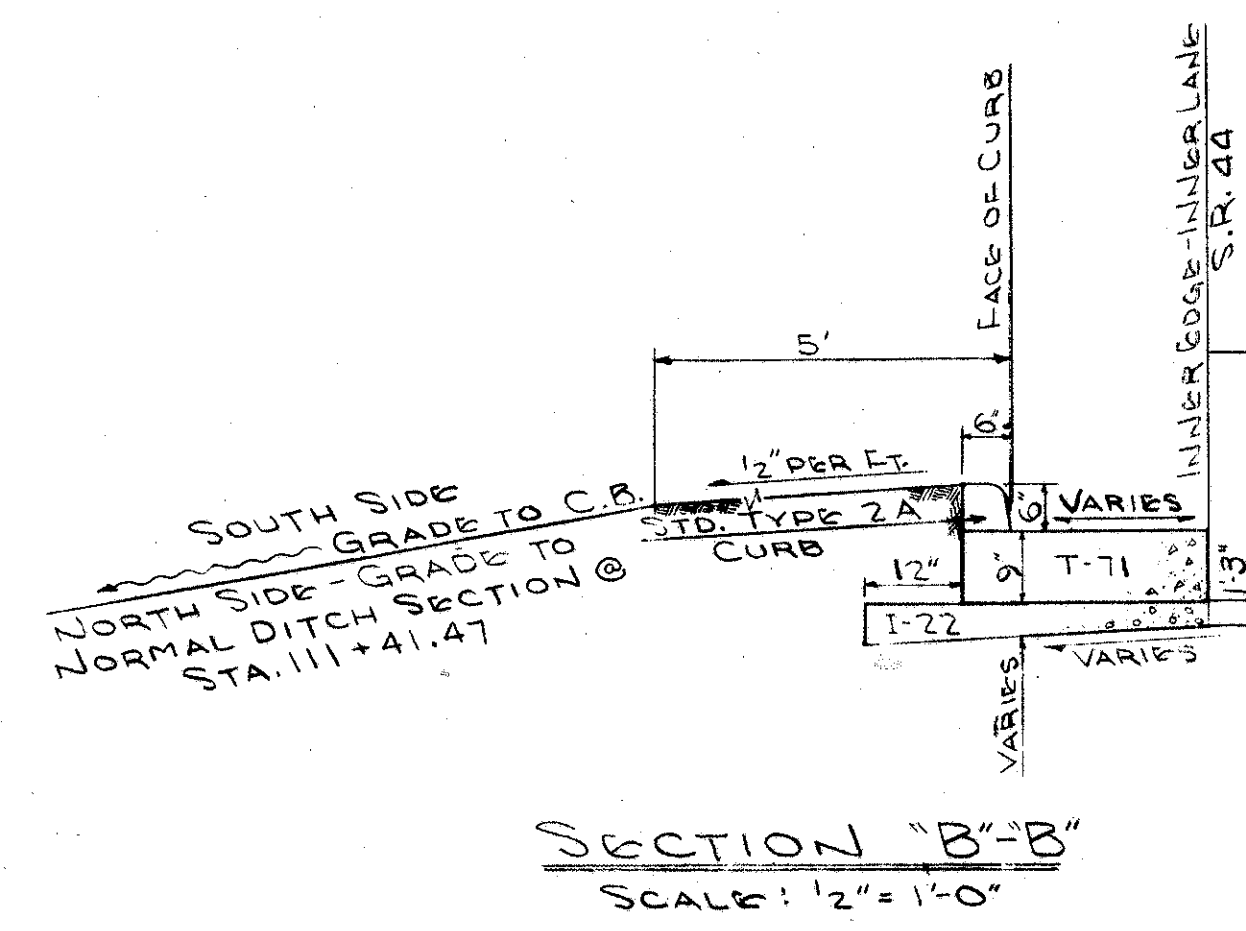
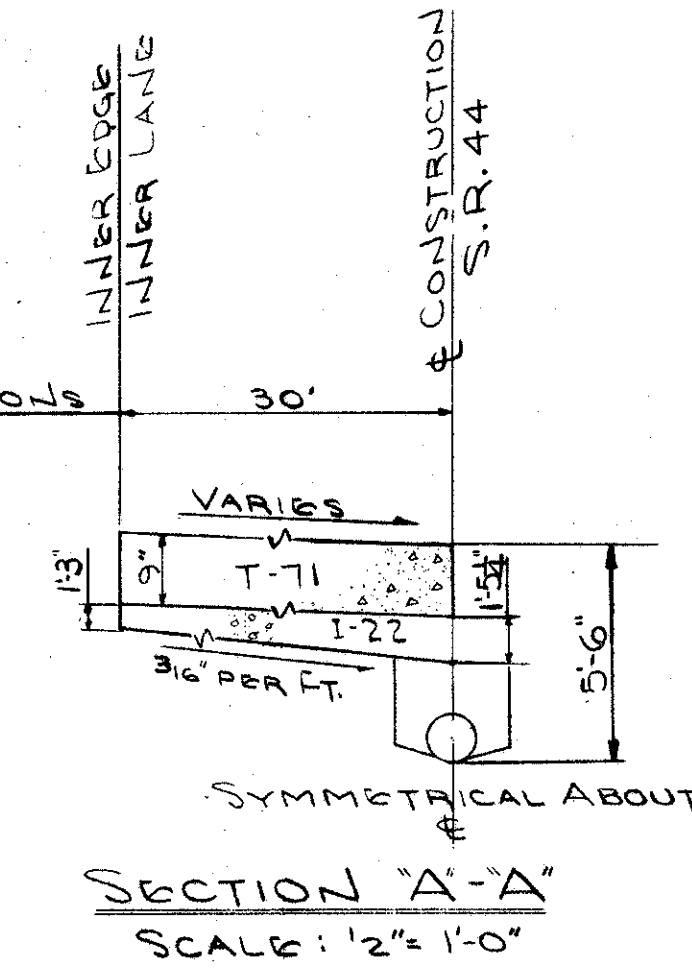
ITEM	DESCRIPTION	QUANTITY	UNIT
B-219	WATERPROOFED AGGREGATE BASE COURSE (TYPE "B")	75.21	CU.YD.
T-31	BITUMINOUS SURFACE TREATMENT	902.57	SQ.YD.
T-71	9" REINFORCED PORTLAND CEMENT CONCRETE PAVEMENT	2271.82	SQ.YD.
L-9	SEEDING AND PROTECTING	1230	SQ.YD.
E-101	ROADWAY EXCAVATION	2490	CU.YD.
I-12	CONCRETE CURB (STANDARD TYPE 2-A)	348.42	LN.FT.
I-18	STABILIZED CRUSHED AGGREGATE SHOULDERS AND APPROACHES	132.95	CU.YD.
I-22	SUBBASE	1142.96	CU.YD.

* INCLUDES THE DECELERATION LANE CONCRETE PAVEMENT, SUBBASE & PAVED BERM MATERIALS. CONCRETE PAVEMENT & SUBBASE MATERIAL FOR S.R.44 PROPER ARE COVERED ON SHEET 4

NOTES

- FOR TRUE ELEVATIONS ADD 900.00 TO THOSE SHOWN, UNLESS NOTED.
- ALL ELEVATIONS ON ROUNDINGS GIVEN AT 10' INTERVALS, STARTING AT S.R.44 OR P.C. POINTS. ELEVATIONS ON E AND EXTENDED EDGES OF PAVEMENT GIVEN AT 25' STATIONS, UNLESS NOTED.
- ALL RADII GIVEN TO FACE OF CURB OR EDGE OF PAVEMENT, UNLESS NOTED.
- THE PAVED BERM VARIES UNIFORMLY FROM 10' TO 4' ALONG THE EDGE OF PAVEMENT CURVE. THE SHOULDER & SHOULDER SLOPES ALSO VARY UNIFORMLY.
- ALL DRAINAGE ITEMS (CB, PIPES, SODDING ETC.) FOR THIS INTERSECTION ARE FURNISHED ON OTHER SHEETS.

JOINT SYMBOLS
SEE SHEET NO. 132



SEE TYPICAL SECTION - SHEET NO. 4

TRYGVE HOFF & ASSOCIATES
ENGINEERS
1922 EAST 107TH STREET
CLEVELAND, OHIO

**AUBURN ROAD - S.R. 44
INTERSECTION DETAILS**

SCALE 1" = 20' DATE

DESIGNED	DRAWN	TRACED	CHECKED	REVIEWED	DATE	REVISED
J.C.B.	S.C.		J.C.B.	T.L.L.	10/11/68	