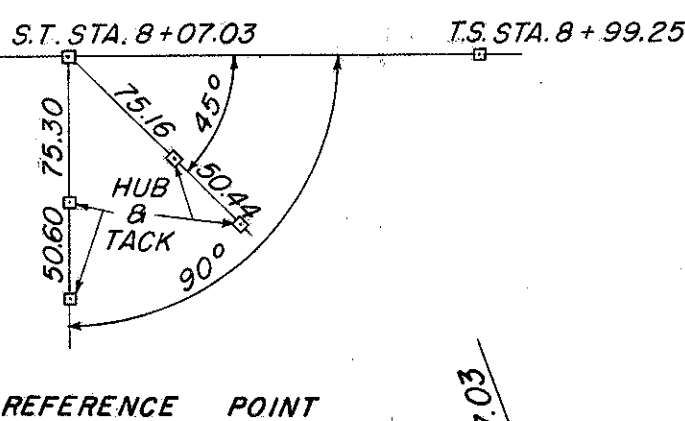
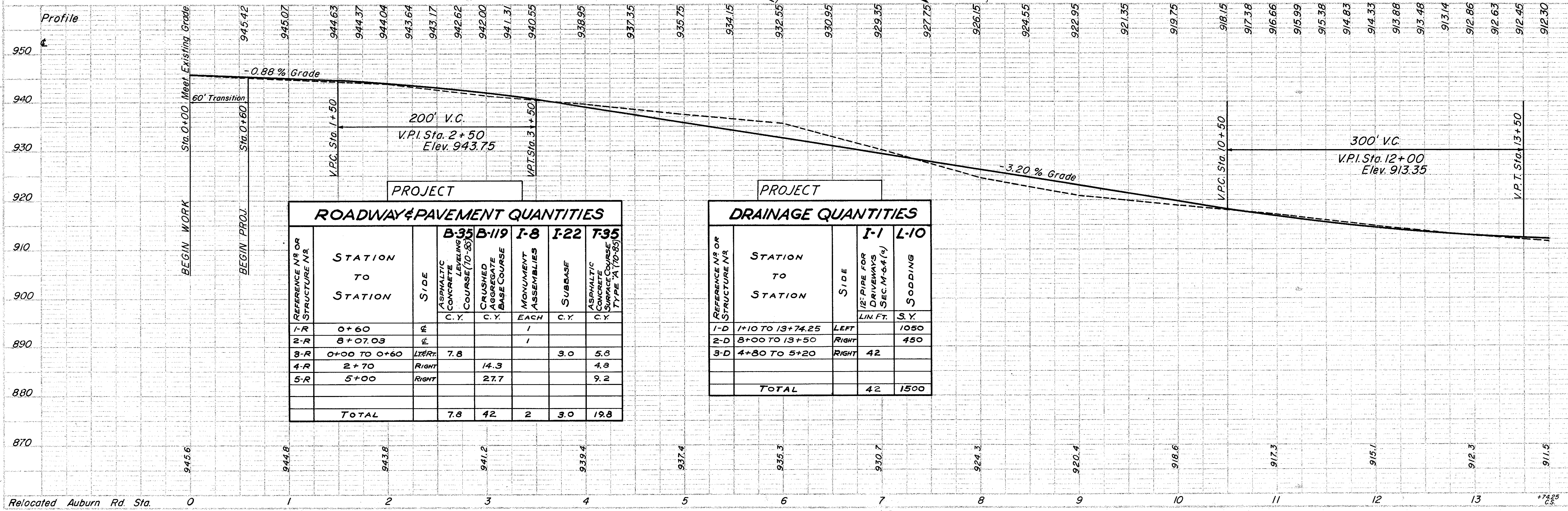
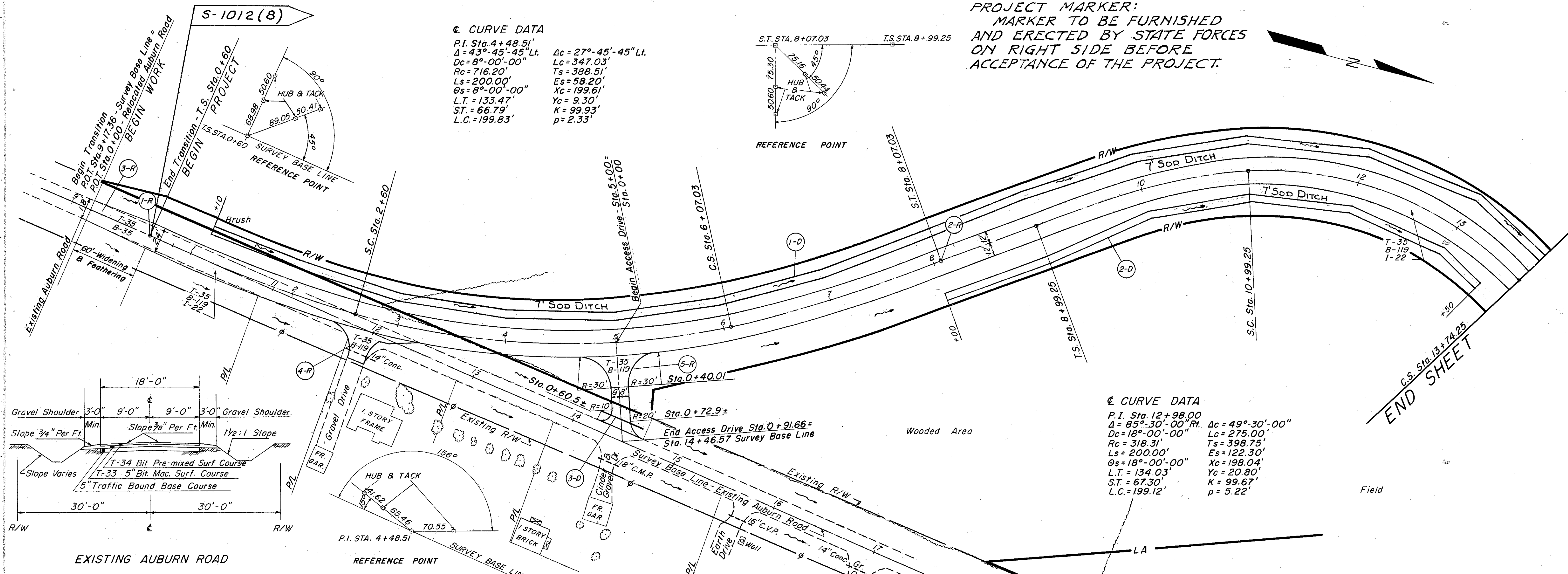


PROJECT MARKER:
MARKER TO BE FURNISHED
AND ERECTED BY STATE FORCES
ON RIGHT SIDE BEFORE
ACCEPTANCE OF THE PROJECT.

€ CURVE DATA
P.I. Sta. 4+48.51'
Δ = 43°-45'-45" Lt. Δc = 27°-45'-45" Lt.
Dc = 8°-00'-00" Lt. Lc = 347.03'
Rc = 716.20' Ts = 388.51'
Ls = 200.00' Es = 58.20'
Os = 8°-00'-00" Xc = 199.61'
L.T. = 133.47' Yc = 9.30'
S.T. = 66.79' K = 99.93'
L.C. = 199.83' p = 2.33'



€ CURVE DATA
P.I. Sta. 12+98.00
Δ = 85°-30'-00" Rt. Δc = 49°-30'-00"
Dc = 18°-00'-00" Rt. Lc = 275.00'
Rc = 318.31' Ts = 398.75'
Ls = 200.00' Es = 122.30'
Os = 18°-00'-00" Xc = 198.04'
L.T. = 134.03' Yc = 20.80'
S.T. = 67.30' K = 99.67'
L.C. = 199.12' p = 5.22'



REFERENCE NO. OR STRUCTURE NO.	STATION TO STATION	SIDE	B-35 B-119 I-8 I-22 T-35	
			ASPHALTIC CONCRETE LEVELING COURSE (10-85) C.Y.	CRUSHED AGGREGATE BASE COURSE MONUMENT ASSEMBLIES EACH C.Y.
1-R	0+60	RIGHT		1
2-R	8+07.03	RIGHT		1
3-R	0+00 TO 0+60	LEFT	7.8	3.0
4-R	2+70	RIGHT	14.3	4.8
5-R	5+00	RIGHT	27.7	9.2
TOTAL			7.8	42

REFERENCE NO. OR STRUCTURE NO.	STATION TO STATION	SIDE	I-1 L-10	
			12" PIPE FOR DRIVEWAYS SEC. M-4(4) LIN. FT.	SODDING S.Y.
1-D	1+10 TO 13+74.25	LEFT		1080
2-D	8+00 TO 13+50	RIGHT		450
3-D	4+80 TO 5+20	RIGHT	42	
TOTAL			42	1500