

NOTES
 UNLESS OTHERWISE SPECIFIED THE FOLLOWING NOTES APPLY.
 ELEVATIONS ARE GIVEN TO TOP OF PAVEMENT AT JOINTS AND AT EVEN 50', 25' OR 10' STATIONS.
 DIMENSIONS ARE GIVEN TO JOINTS, EDGE OF PAVEMENT OR FACE OF CURB.
 RADII ARE GIVEN TO FACE OF CURB OR EDGE OF PAVEMENT.
 FOR TRUE ELEVATIONS ADD 700.00 TO THOSE SHOWN.
 * DENOTES QUANTITIES ARE CARRIED ON PLAN & PROFILE SHEETS.
 ** DENOTES QUANTITIES ARE CARRIED ON CALCULATION SHEET NO.10.

ESTIMATED QUANTITIES CODE 7221

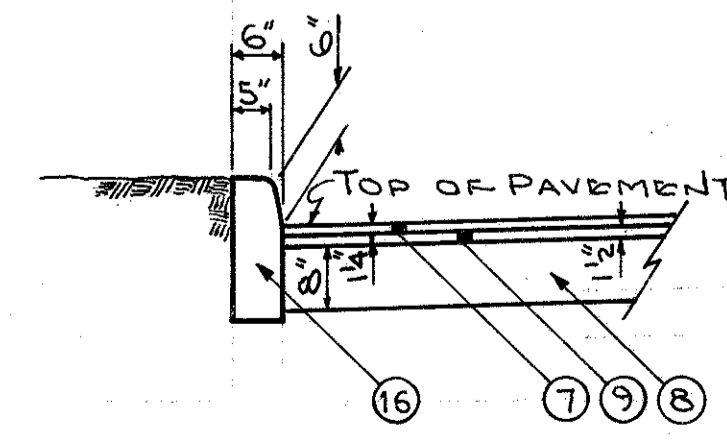
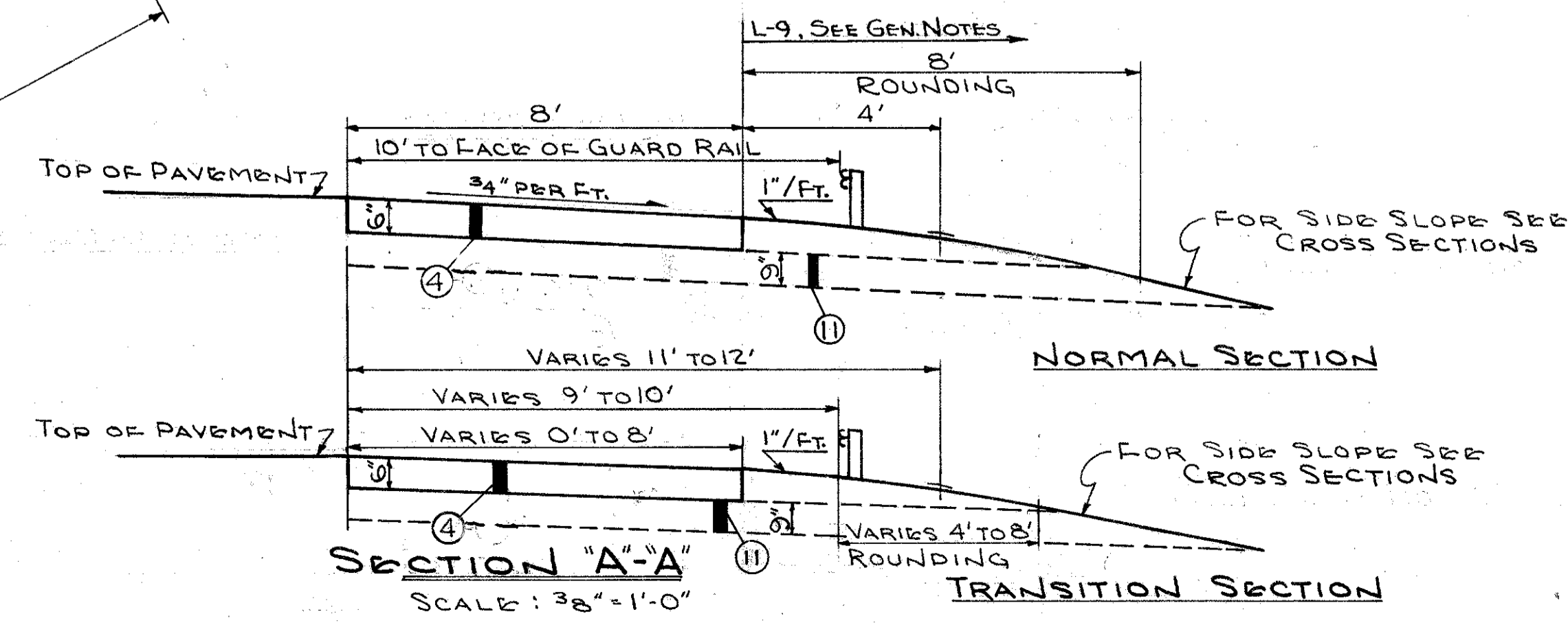
ITEM	DESCRIPTION	QUANTITY
T-31	BITUMINOUS SURFACE TREATMENT	142.28 SQ. YD.
T-35	ASPHALTIC CONCRETE SURFACE COURSE (TYPE "A") (70-85)	24.04 CU. YD.
T-71	9" REINFORCED PORTLAND CEMENT CONCRETE PAVEMENT	773.84 SQ. YD.
I-12	CONCRETE CURB - STANDARD TYPE 6	196.50 LIN. FT.
I-18	STABILIZED CRUSHED AGGREGATE SHOULDERS & APPROACHES	68.93 CU. YD.
I-22	SUBBASE	159.42 CU. YD.
B-219	WATERPROOFED AGGREGATE BASE COURSE (TYPE "B")	11.86 CU. YD.
	CALCIUM CHLORIDE, FURNISHED & APPLIED, FOR STABILIZING SHOULDERS - SEE NOTE IN PROPOSAL	0.5 TON
B-35	ASPHALTIC CONCRETE LEVELING COURSE (70-85)	28.83 CU. YD.
B-35	SEALING VERTICAL FACE OF EXISTING PAVEMENT	212.27 LIN. FT.
B-119	CRUSHED AGGREGATE BASE COURSE	158.43 CU. YD.
SPEC.	MIXING CALCIUM CHLORIDE AND CRUSHED AGGREGATE	414 SQ. YD.

LEGEND

- * (6) ITEM I-4 6" UNDERDRAINS (FOR LOCATION SEE PLAN & PROFILE SHEETS)
- (4) ITEM I-18 STABILIZED CRUSHED AGGREGATE SHOULDERS & APPROACHES WITH CALCIUM CHLORIDE (DEPTH AS SHOWN)
- (7) ITEM T-35 ASPHALTIC CONCRETE SURFACE COURSE, TYPE "A" (DEPTH AS SHOWN) (70-85)
- (8) ITEM B-119 CRUSHED AGGREGATE BASE COURSE (DEPTH AS SHOWN)
- (9) ITEM B-35 ASPHALTIC CONCRETE LEVELING COURSE (DEPTH AS SHOWN) (70-85)
- ** (11) ITEM I-9 STONE UNDERDRAINS, No. 2
- (16) ITEM I-12 CONCRETE CURB (TYPE 6)

JOINT SYMBOL

- (L) STANDARD LONGITUDINAL JOINT
- (E) STANDARD EXPANSION JOINT



TRYGVE HOFF & ASSOCIATES
 ENGINEERS
 1922 EAST 107TH STREET CLEVELAND, OHIO

**MORLEY ROAD INTERSECTION
 PAVEMENT DETAILS**

SCALE: 1" = 20' UNLESS NOTED DATE

DESIGNED	DRAWN	TRACED	CHECKED	REVIEWED	DATE	REVISED
DMJ	GC		GM	T.L.L.	10/11/58	