

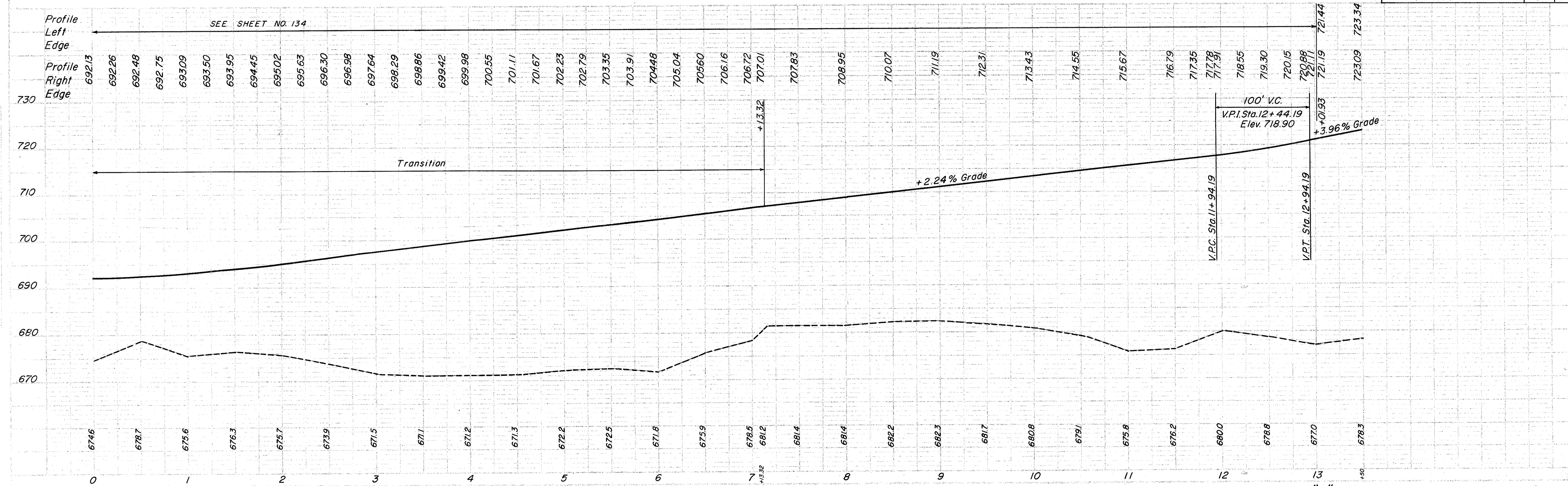
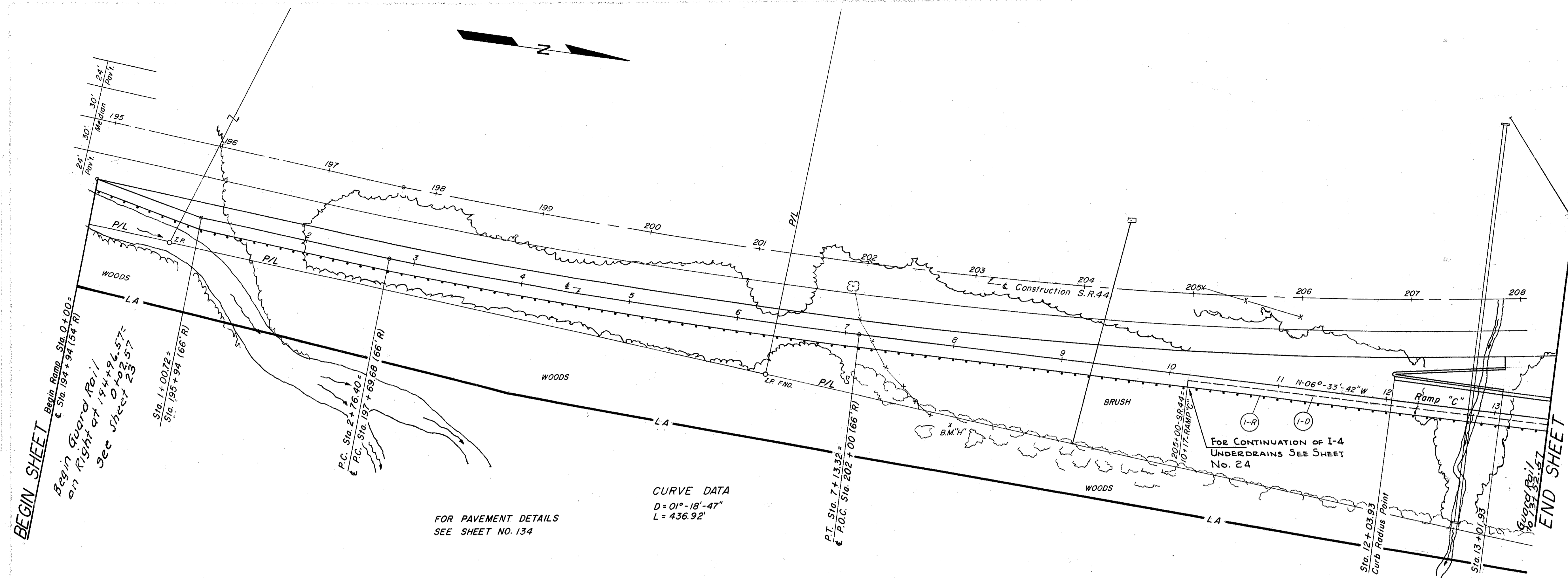
LAKE COUNTY
LAK-44-1.70

ROADWAY & PAVEMENT QUANTITIES

REFERENCE NO.	STATION TO STATION	SIDE	I-15 GUARD RAIL STEEL BEAM TYPE (DEEP)
I-R	0+02.57 to 13+52.57	RT.	1350
TOTALS			1350

DRAINAGE QUANTITIES

REFERENCE NO. OR STRUCTURE NO.	STATION TO STATION	SIDE	I-4 6" PIPE UNDERDRAINS (SHALLOW)
I-D	10+17 TO 13+50	RT.	333
TOTALS			333



PLAN & PROFILE RAMP "C" STA. 0+00 TO STA. 13+50