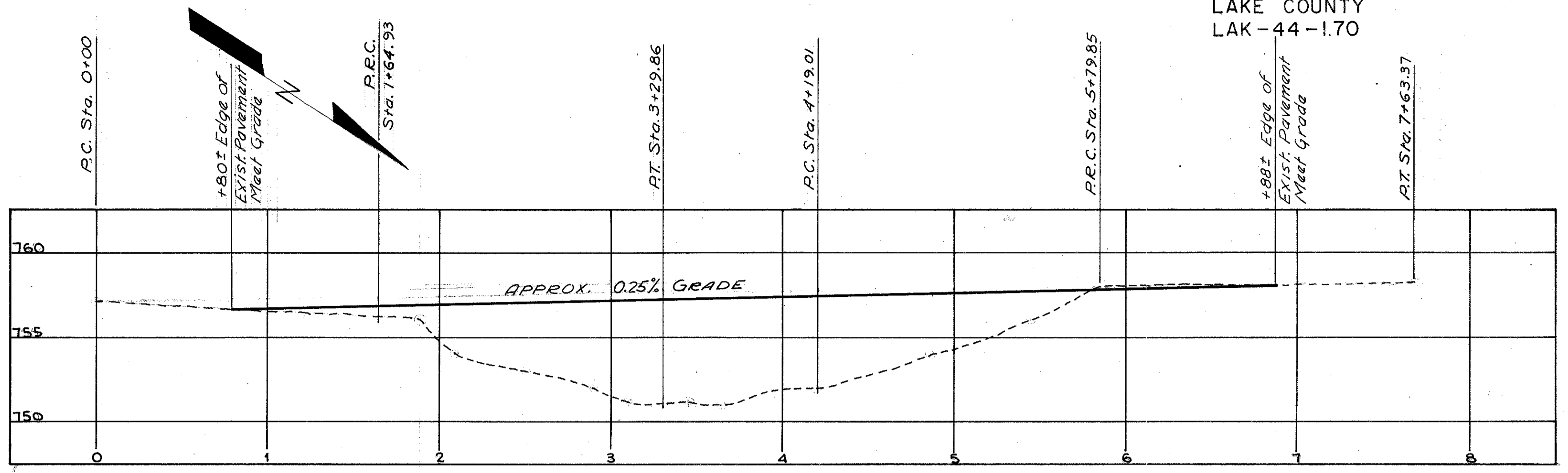
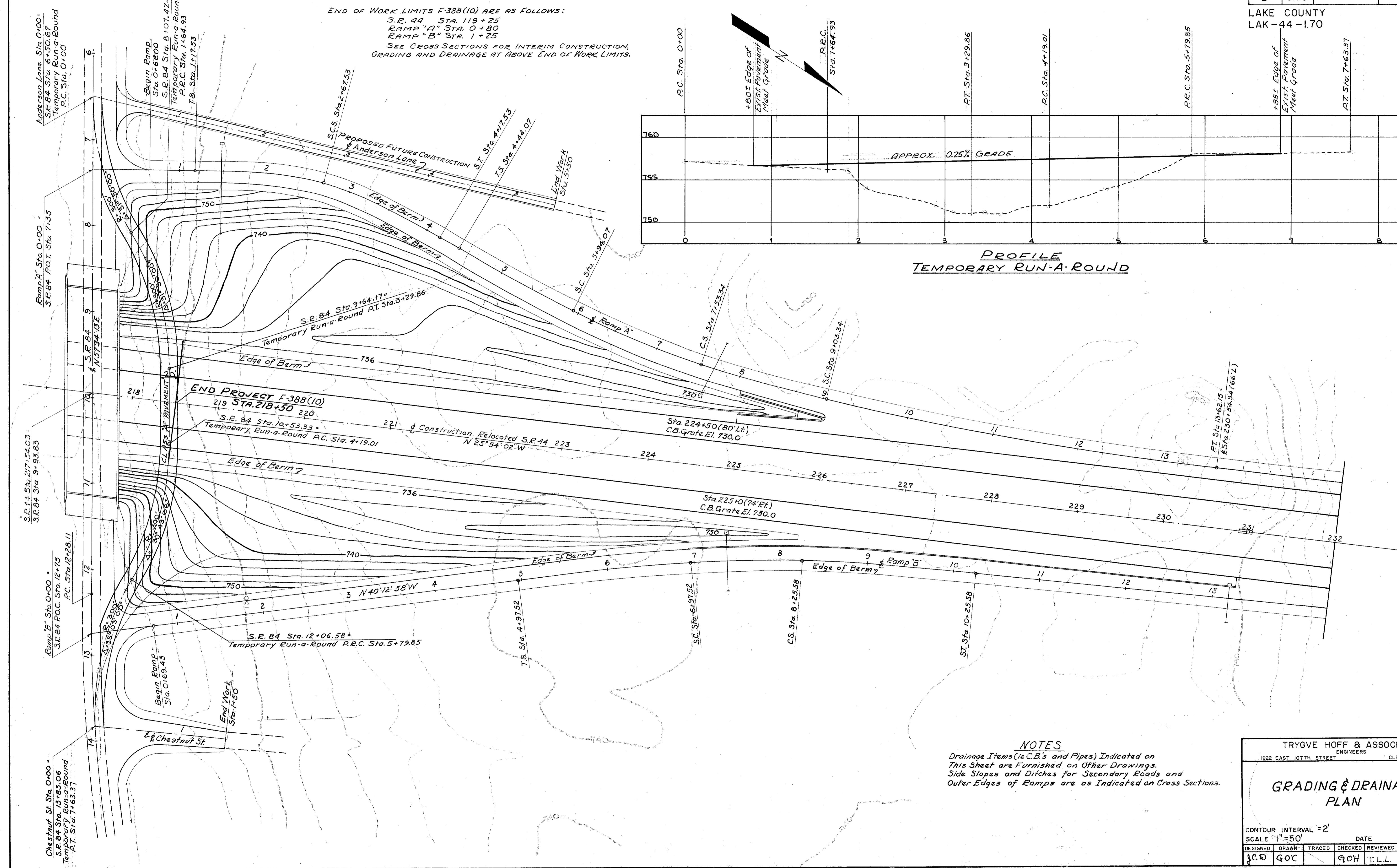


LAKE COUNTY
LAK-44-1.70

NOTE:
GRADING AND DRAINAGE PLAN AS SHOWN INCLUDES PROPOSED FUTURE CONSTRUCTION NORTH OF S.R. 84.
END OF WORK LIMITS F-388(10) ARE AS FOLLOWS:
S.R. 44 STA. 119+25
RAMP "A" STA. 0+80
RAMP "B" STA. 1+25
SEE CROSS SECTIONS FOR INTERIM CONSTRUCTION, GRADING AND DRAINAGE AT ABOVE END OF WORK LIMITS.



PROFILE
TEMPORARY RUN-A-ROUND



NOTES
Drainage Items (i.e. C.B.'s and Pipes) Indicated on This Sheet are Furnished on Other Drawings. Side Slopes and Ditches for Secondary Roads and Outer Edges of Ramps are as Indicated on Cross Sections.

TRYGVE HOFF & ASSOCIATES
ENGINEERS
1922 EAST 107TH STREET CLEVELAND, OHIO

GRADING & DRAINAGE PLAN

CONTOUR INTERVAL = 2'
SCALE 1" = 50'
DATE

DESIGNED	DRAWN	TRACED	CHECKED	REVIEWED	DATE	REVISED
JCD	GC		GH	T.L.L.	10/1/58	