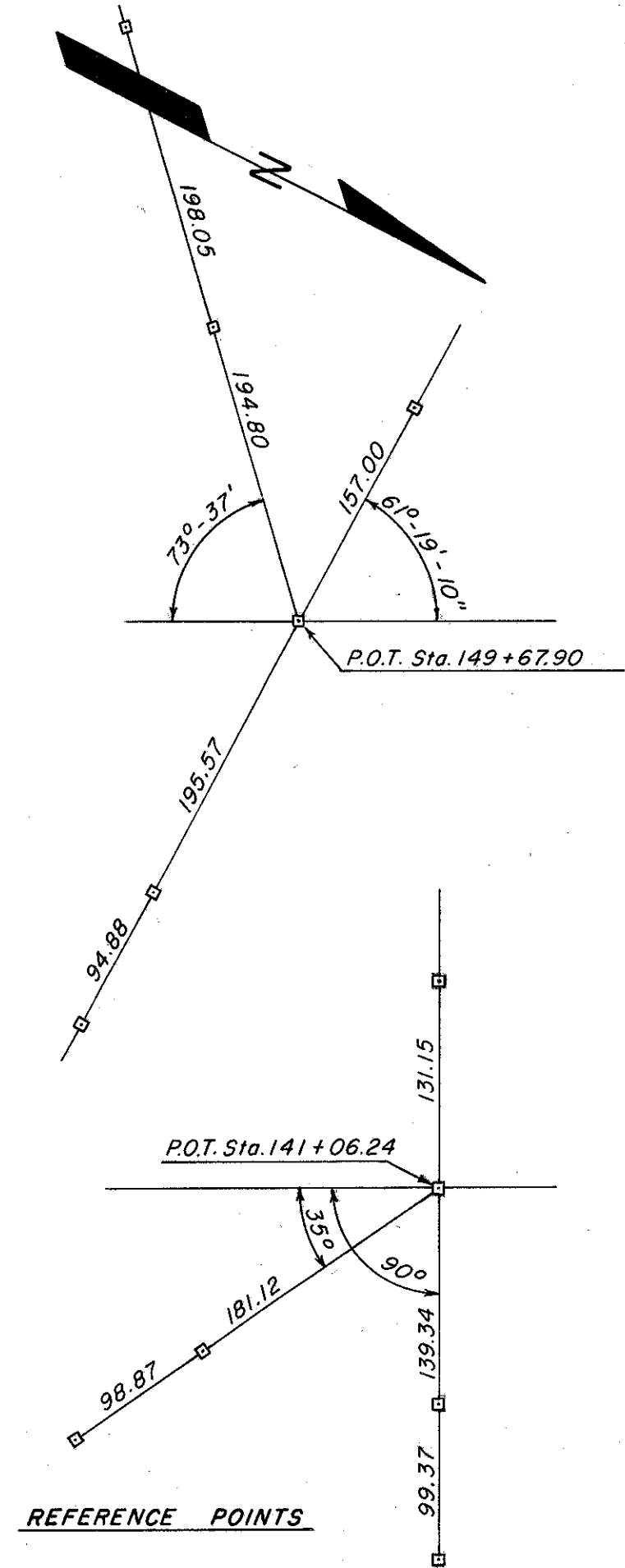
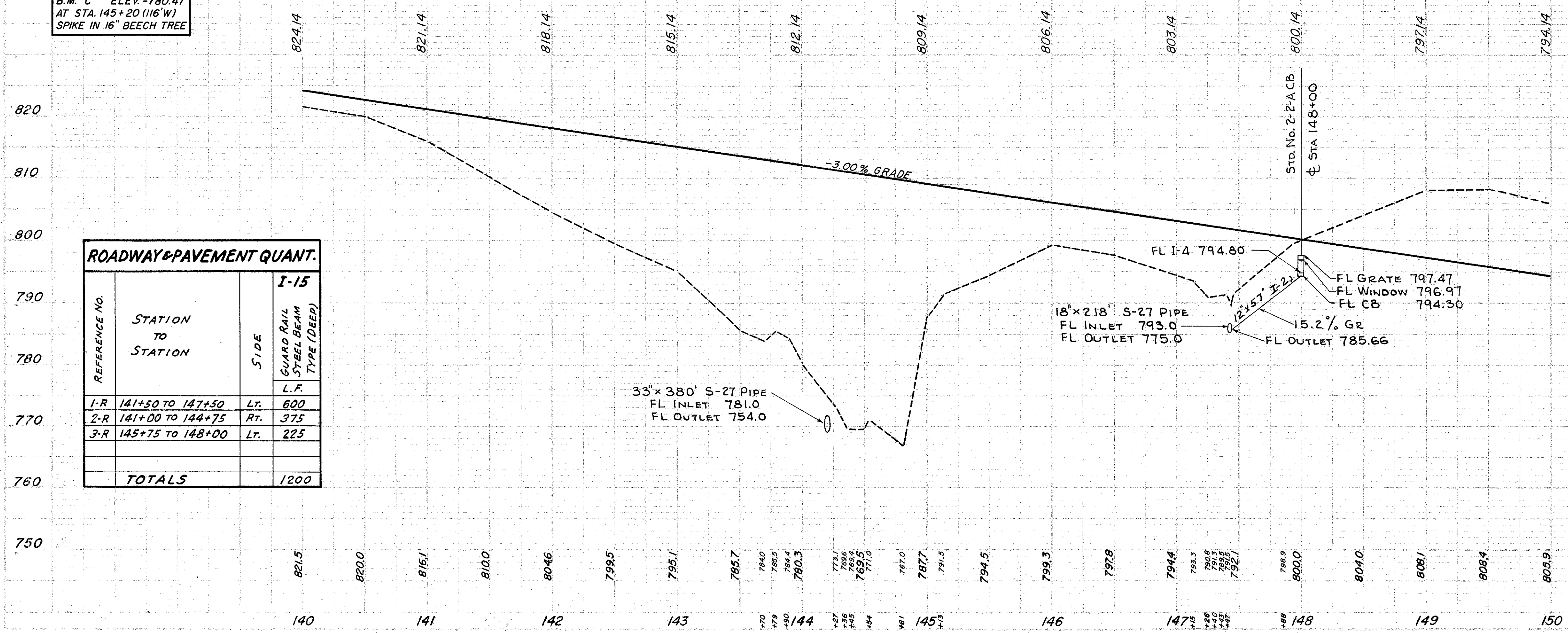
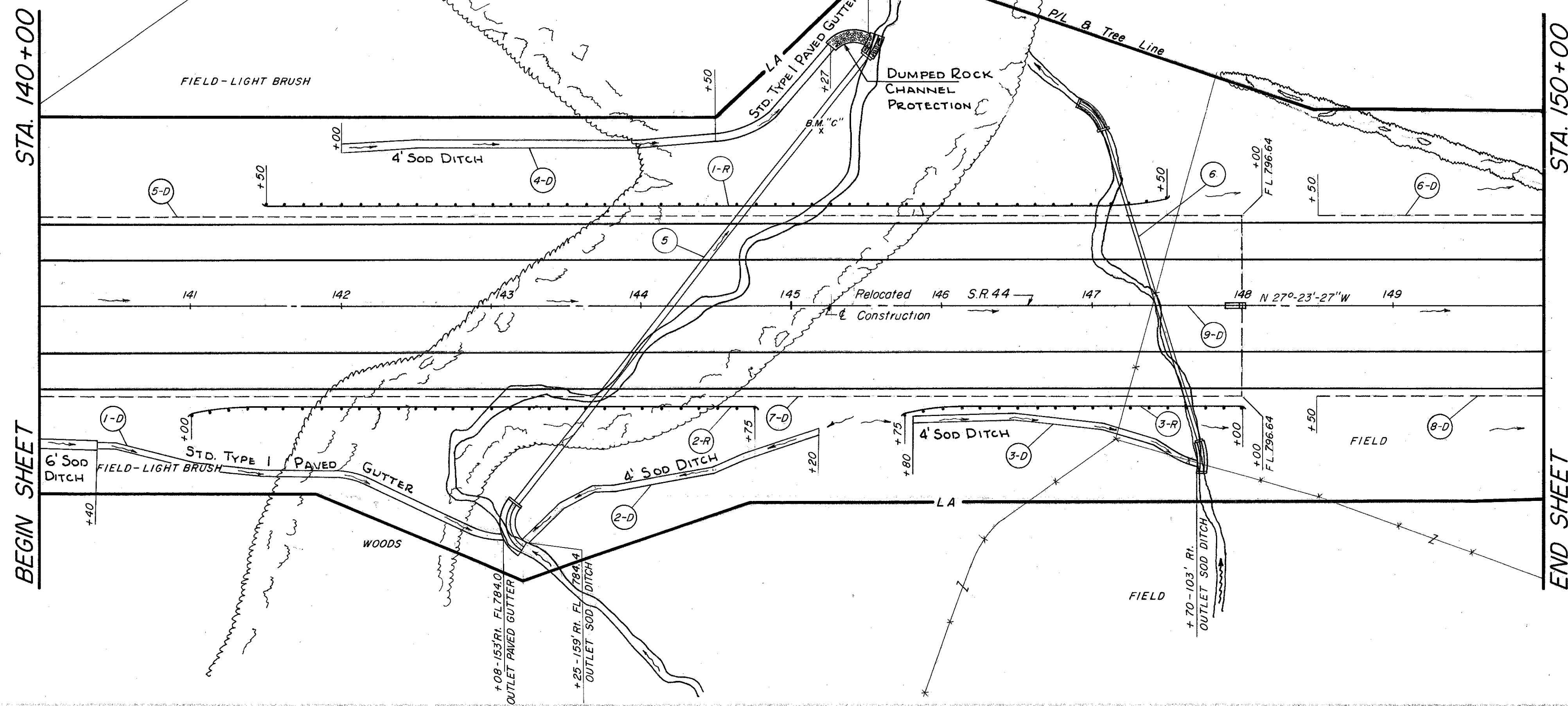


LAKE COUNTY
LAK-44-170



B.M. "C" ELEV. -780.47
AT STA. 145+20 (116'W)
SPIKE IN 16" BEECH TREE



ROADWAY & PAVEMENT QUANT.			
REFERENCE NO.	STATION TO STATION	SIDE	I-15 GUARD RAIL STEEL BEAM TYPE (DEEP)
1-R	141+50 TO 147+50	Lt.	600
2-R	141+00 TO 144+75	Rt.	375
3-R	145+75 TO 148+00	Lt.	225
TOTALS			1200

STATION TO STATION	REFERENCE NO.	SIDE		TOTALS
		Rt.	Lt.	
140+00 TO 143+08	I-D			
143+25 TO 145+20	2-D			
145+80 TO 147+70	3-D			
142+00 TO 145+27	4-D			
140+00 TO 148+00	5-D			
148+50 TO 150+00	6-D			
140+00 TO 148+00	7-D			
148+00 TO 150+00	8-D			
147+43 TO 148+00	9-D			
144+20 S.L.M. = 2.39 MI.	E-1	682		
147+43 S.L.M. = 2.45 MI.	E-2	145		
TOTALS		827	124	951

DRAINAGE QUANTITIES

REFERENCE NO.	DESCRIPTION	QUANTITY	UNIT	PRICE	TOTAL
I-15	GUARD RAIL STEEL BEAM TYPE (DEEP)	1200	L.F.		
I-14	PAVED GUTTER TYPE A SPECIAL	100	L.F.		
I-14	PAVED GUTTER TYPE I STD. TYPE	100	L.F.		
I-10	DUMPED ROCK CHANNEL PROTECTION	18.3	Sq. Yd.		
I-10	RIP RAP TYPE A	30.4	Sq. Yd.		
I-8	CATCH BASIN STD. NO. 2-24	1	EACH		
I-5	PIPE SPECIAL 18" x 12" 60' WYE BRANCH	1	EA		
I-5	6" PIPE SPECIAL 90° BEND	1	EA		
I-4	6" PIPE UNDERDRAIN (SHALLOW)	150	L.F.		
I-4	6" PIPE UNDERDRAIN (DEEP)	150	L.F.		
I-2	12" STORM SEWER OR M-6.8(b)	57	L.F.		
E-3	CHANNEL EXCAVATION	58	Sq. Yd.		
E-2	EXCAVATION FOR STRUCTURES	145	Sq. Yd.		
TOTALS		827			