

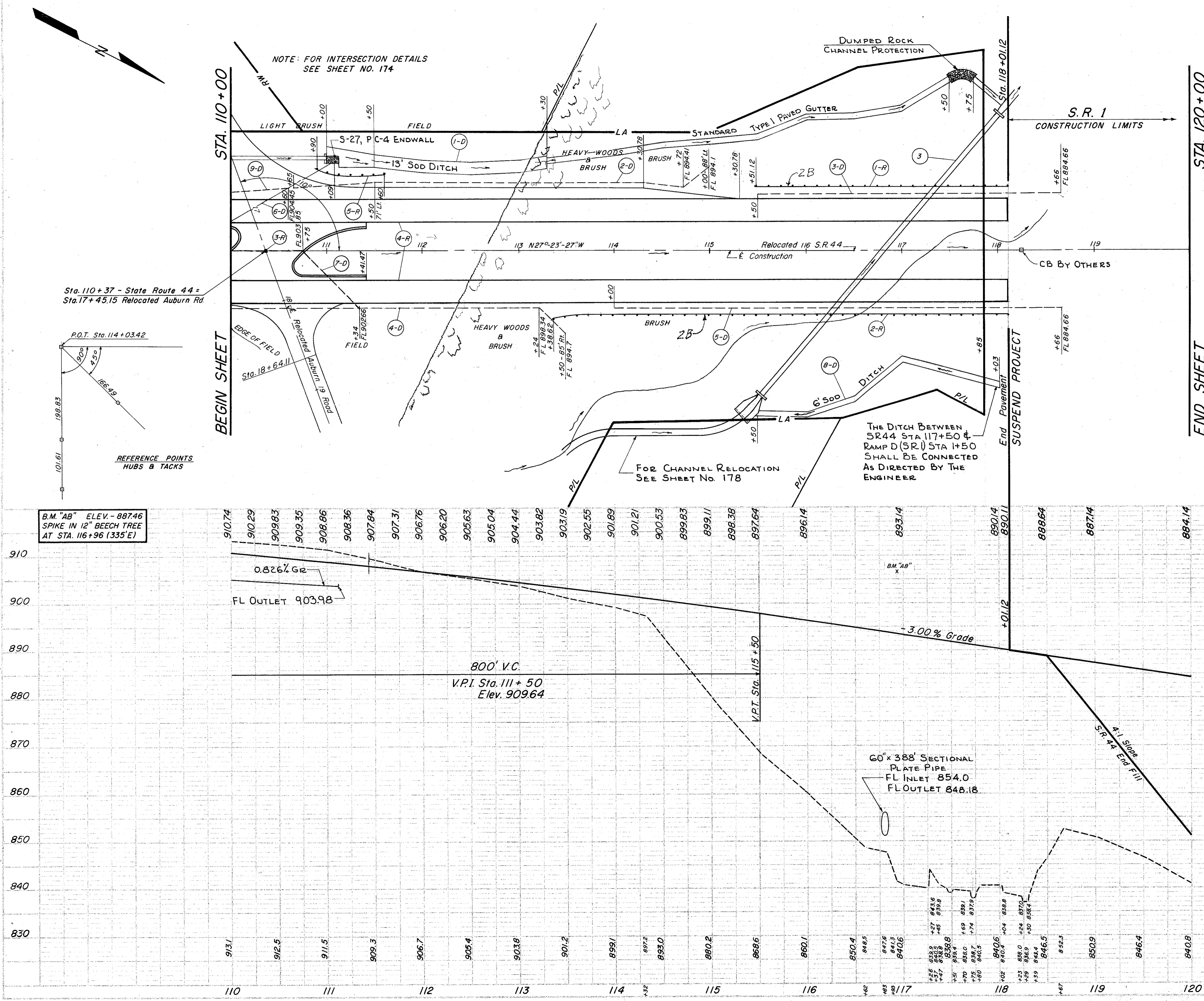
ROADWAY & PAVEMENT QUANTITIES

REFERENCE NO.	STATION TO STATION	SIDE	ITEMS			
			I-8 MONUMENT ASSEMBLIES EACH	I-15 GUARD RAIL STEEL BEAM TYPE (DEEP) L.F.	I-22 SUBBASE (12" ADDED DEPTH) CU. YD.	I-15 GUARD RAIL STEEL BEAM DEEP - 2'S L.F.
1-R	115+51.12 TO 118+01.12	LT.				250
2-R	113+38.62 TO 118+01.12	RT.				462.5
3-R	110+37 S.F. 44	CL.	1			
4-R	110+00 TO 112+00	LT/RT.		75	509.39	
5-R	110+90 TO 111+60	LT.				
TOTALS			1	75	509.39	712.5

* SEE NOTE, SHEET No. 3

DRAINAGE QUANTITIES

REFERENCE NO.	OR STRUCTURE NO.	STATION TO STATION	SIDE	ITEMS	QUANTITIES
1-D		111+00 TO 118+01.12	LT.	6" PIPE SPECIAL	10
2-D		110+00 TO 115+00	LT.	6" PIPE SPECIAL	64
3-D		115+50 TO 118+06	LT.	6" PIPE SPECIAL	10
4-D		110+00 TO 113+50	RT.	6" PIPE SPECIAL	64
5-D		114+00 TO 118+06	LT.	6" PIPE SPECIAL	128
6-D		110+00 TO 111+11	LT.	6" PIPE SPECIAL	1
7-D		110+00 TO 111+34	RT.	6" PIPE SPECIAL	1
8-D		115+50 TO 118+03	RT.	6" PIPE SPECIAL	34
9-D		116+80 S.L.M. - 187 MI. L.T. RT.	LT.	6" PIPE SPECIAL	353
TOTALS					1005



PLAN & PROFILE STA. 110+00 TO STA. 120+00

DATE: 10-11-58
DRAWN BY: J.S.
CHECKED BY: J.S.
APPROVED BY: J.S.

PROJECT: LAKE COUNTY
SHEET: 16
SCALE: AS SHOWN

B.M. "AB" ELEV. - 887.46
SPIKE IN 12" BEECH TREE
AT STA. 116+96 (335'E)

REFERENCE POINTS
HUBS & TACKS

NOTE: FOR INTERSECTION DETAILS
SEE SHEET NO. 174

FOR CHANNEL RELOCATION
SEE SHEET No. 178

THE DITCH BETWEEN
SR44 STA 117+50 &
RAMP D (SR) STA 1+50
SHALL BE CONNECTED
AS DIRECTED BY THE
ENGINEER