

Mark	Size	Length	No	Spacing	Weight
S	1"φ	23'-8"	63	5"	3984
T	1/2"φ	26'-8"	11	2'-0"	196
W	3/4"φ	9'-0"	16		216
K	3/8"φ	2'-0"	52	Staggered 1'-0"	108
F	3/8"φ	4'-6"	59	1'-6"	277
TOTAL WEIGHT					4781

Mark	Size	Length	No	Spacing	Weight
S <sub>1</sub>	3/4"φ	14'-6"	57	5"	1241
S <sub>2</sub>	3/4"φ	11'-6"	47	6"	812
T <sub>1</sub>	3/8"φ	Shown	9	3'+	67
TOTAL WEIGHT					2120

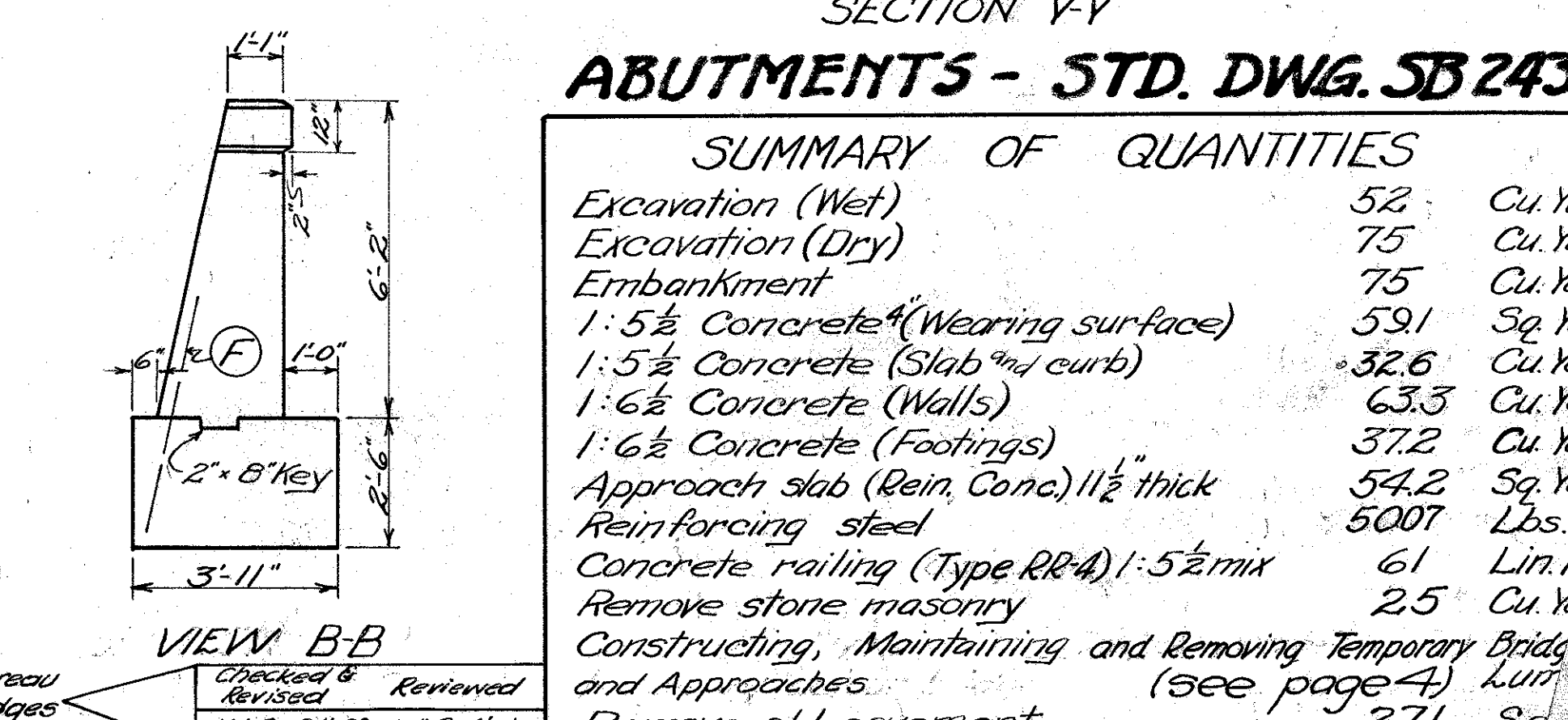
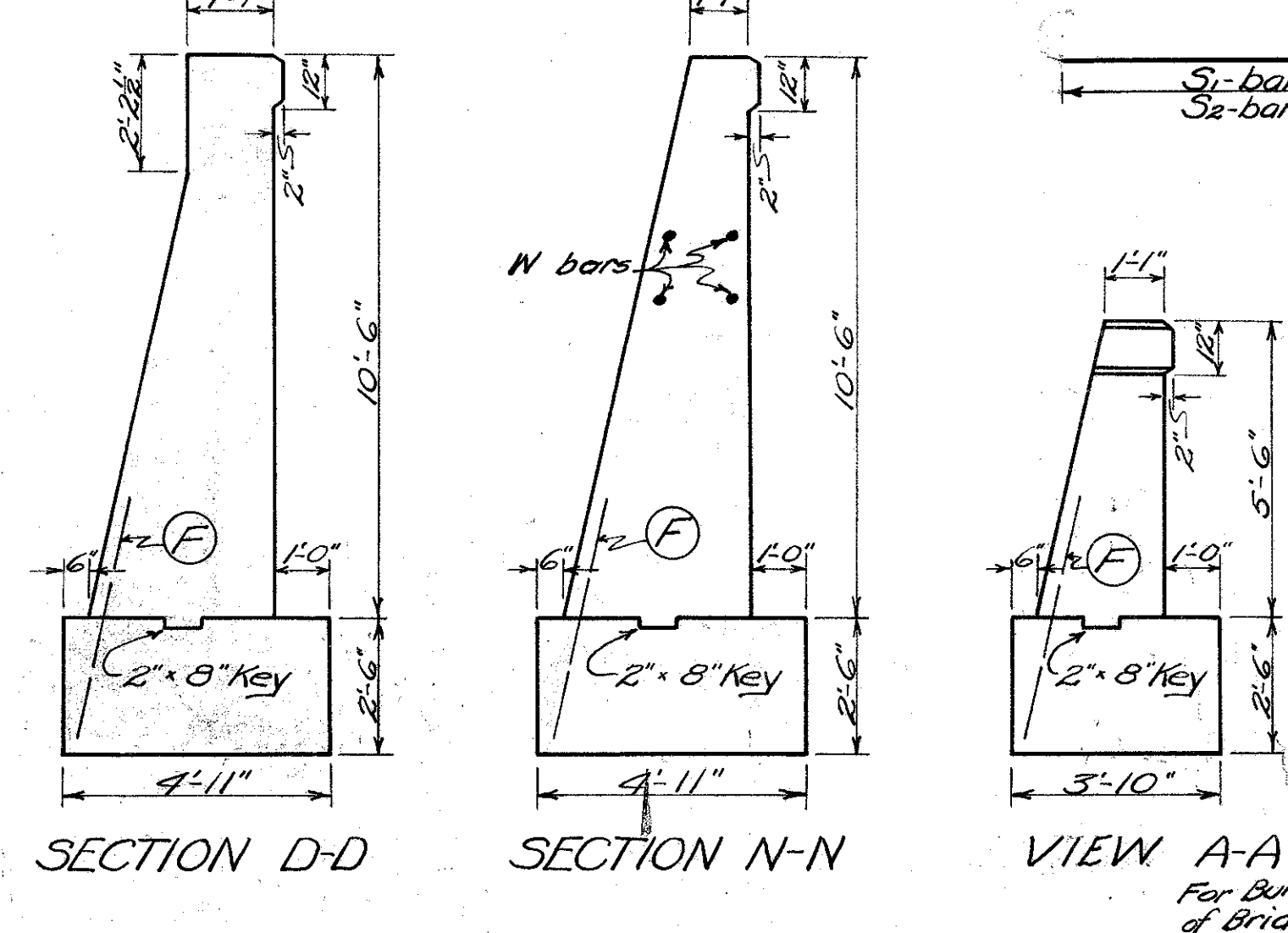
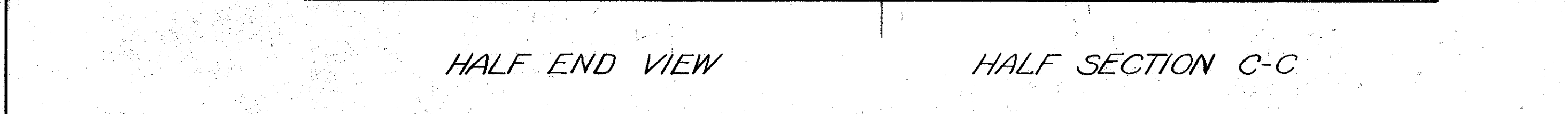
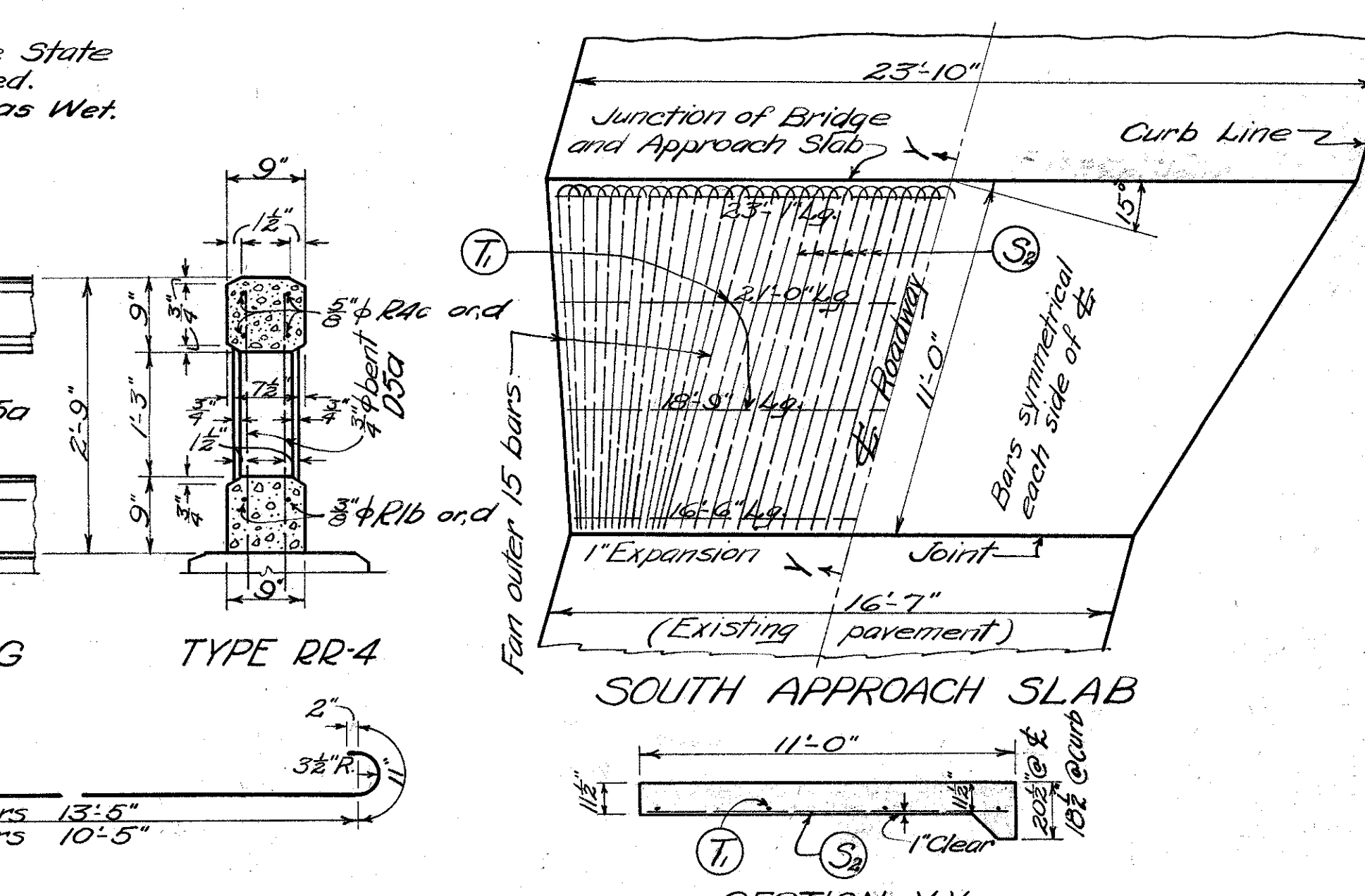
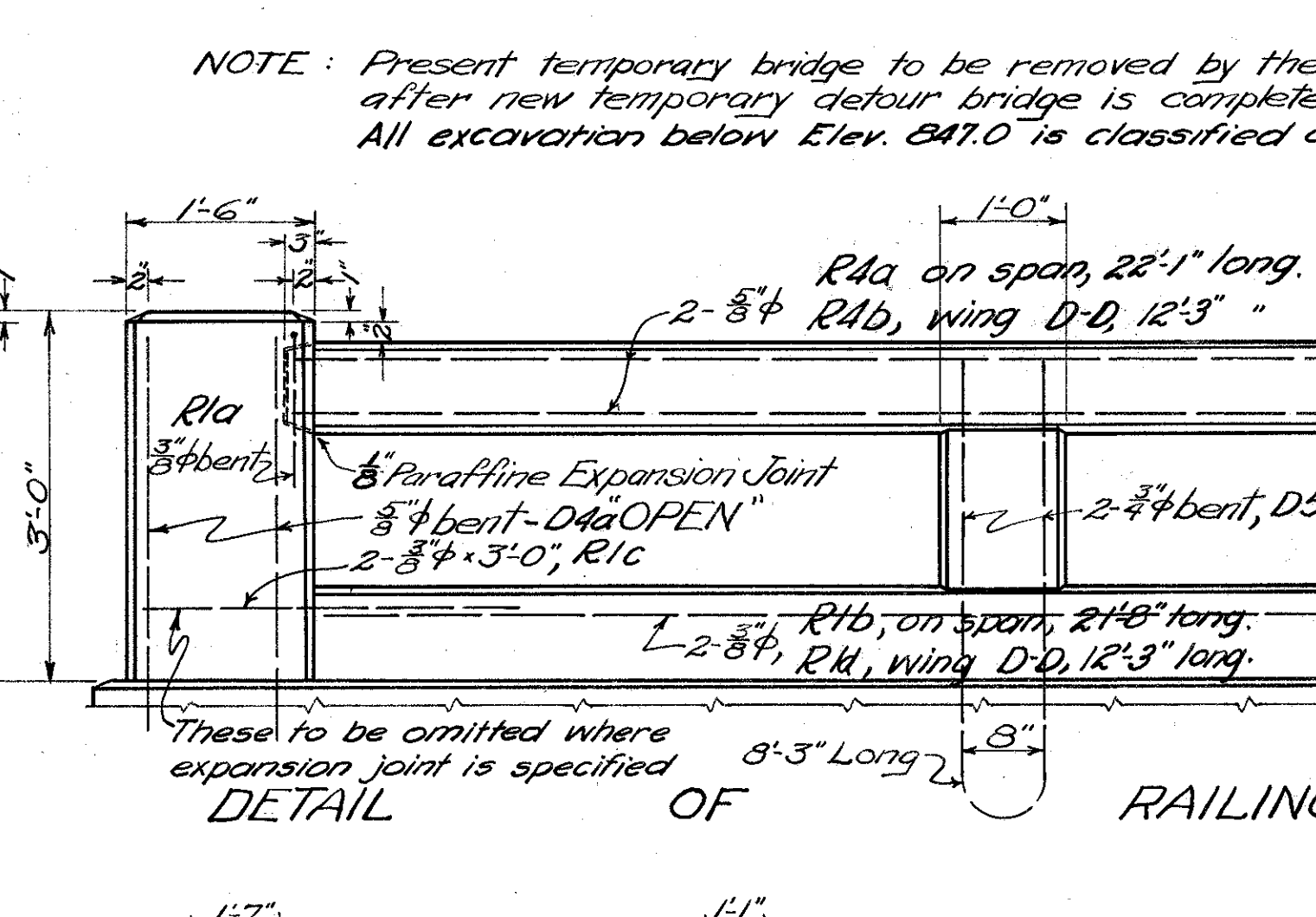
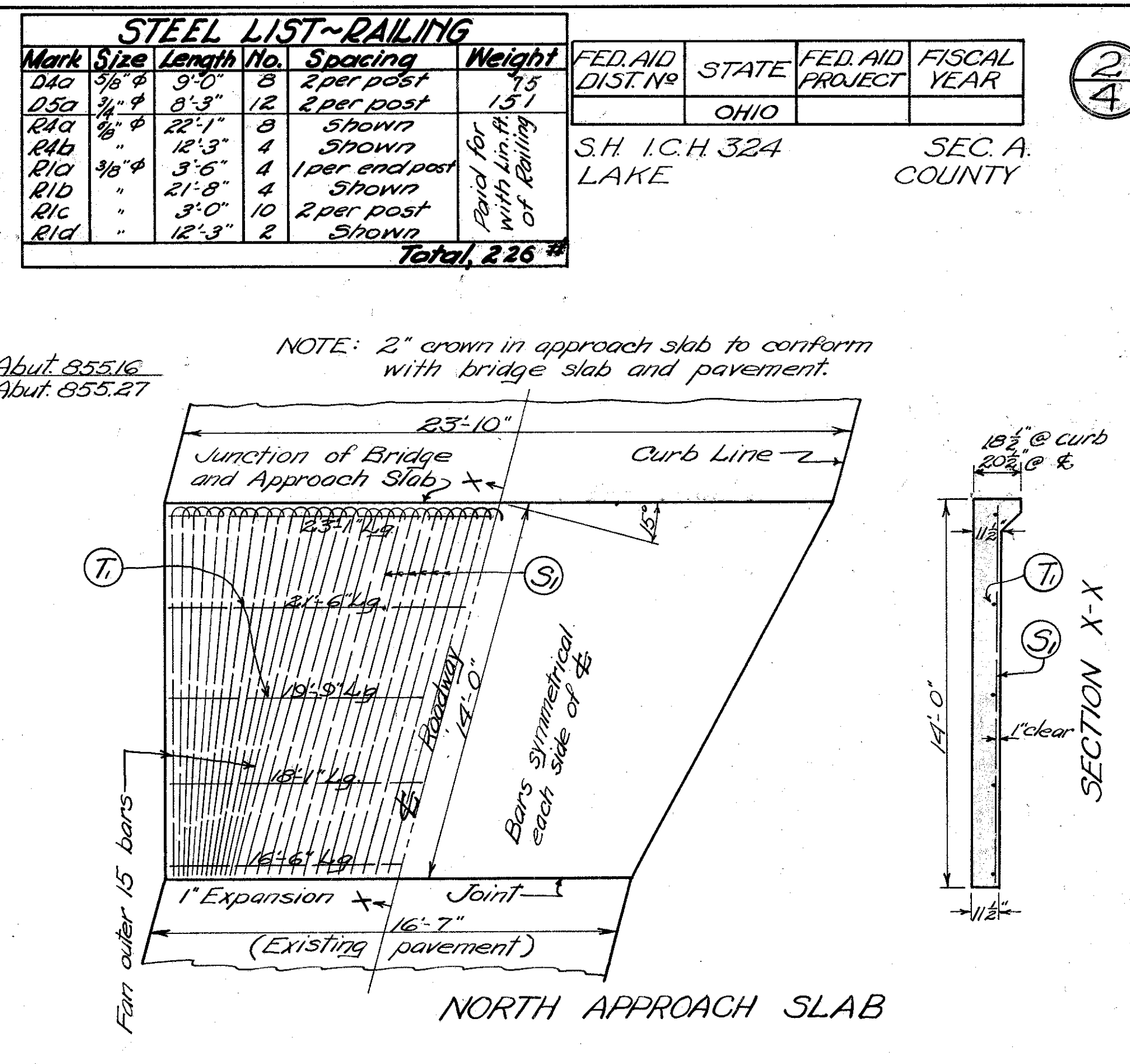
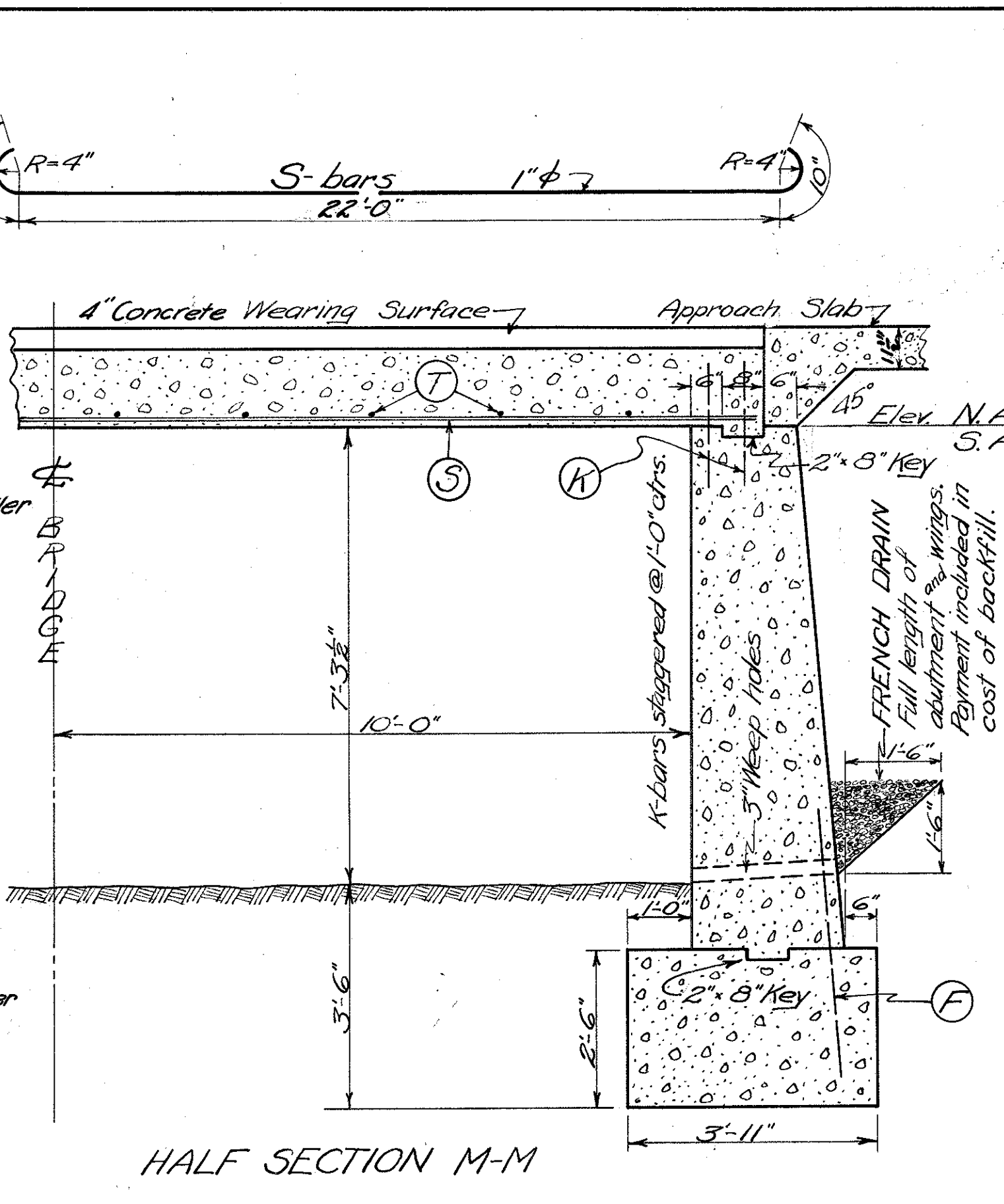
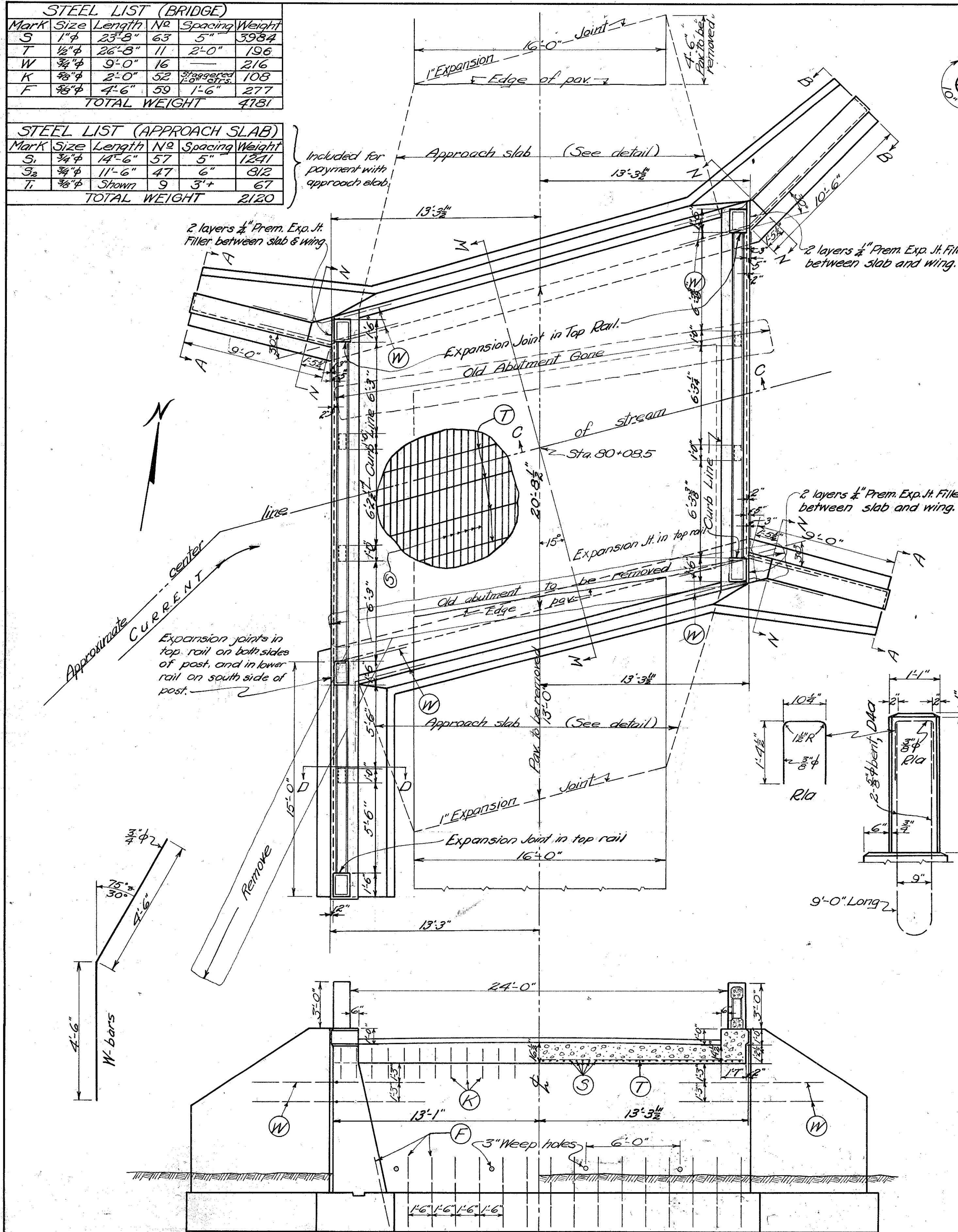
Mark	Size	Length	No	Spacing	Weight
D4a	3/8"φ	9'-0"	8	2 per post	45
D5a	1/2"φ	8'-3"	12	2 per post	151
R4a	1/2"φ	22'-1"	8	Shown	
R4b	1/2"φ	12'-3"	4	Shown	
R1a	3/8"φ	3'-6"	4	1 per end post	
R1b	"	21'-8"	4	Shown	
R1c	"	3'-0"	10	2 per post	
R1d	"	12'-3"	2	Shown	
TOTAL					226 #

FED. AID DIST. NO.	STATE	FED. AID PROJECT	FISCAL YEAR
	OHIO		

S.H. I.C.H. 324  
LAKE

SEC. A.  
COUNTY

2  
4



**ABUTMENTS - STD. DWG. SB 2430**

**SUMMARY OF QUANTITIES**

Excavation (Wet)	52	Cu. Yds.
Excavation (Dry)	75	Cu. Yds.
Embankment	75	Cu. Yds.
1:5 1/2 Concrete (Wearing surface)	591	Sq. Yds.
1:5 1/2 Concrete (Slab and curb)	32.6	Cu. Yds.
1:6 1/2 Concrete (Walls)	63.3	Cu. Yds.
1:6 1/2 Concrete (Footings)	37.2	Cu. Yds.
Approach slab (Rein. Conc.) 1 1/2\"/>		
Reinforcing steel	5007	Lbs.
Concrete railing (Type RR-4) 1:5 1/2 mix	61	Lin. Ft.
Remove stone masonry	2.5	Cu. Yd.
Constructing, Maintaining and Removing Temporary Bridge and Approaches (see page 4)		Lin. Ft.
Remove old pavement	271	Sq.
1\"/>		
1/4\"/>		

Checked & Revised  
V.A.E. 6-11-29 11/16, 6/16/29

NOTE: Present temporary bridge to be removed by the State after new temporary detour bridge is completed. All excavation below Elev. 847.0 is classified as Wet.

NOTE: 2\"/>