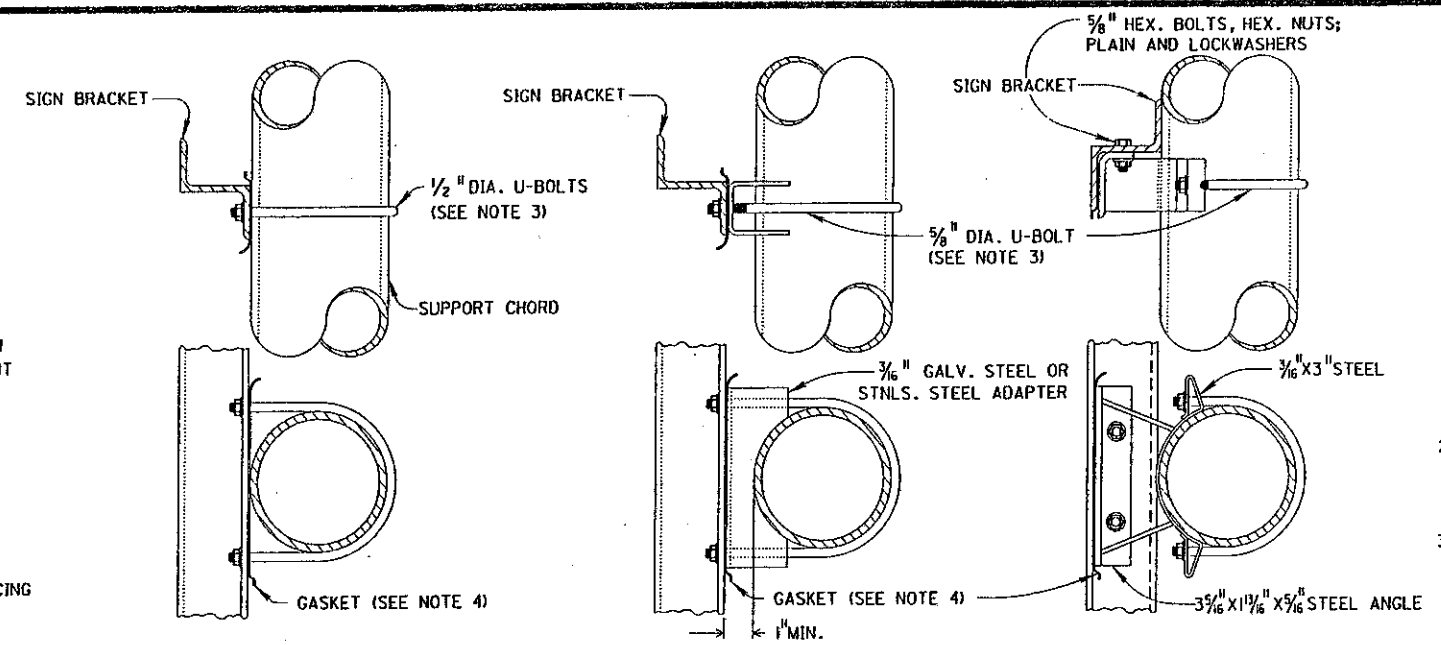


DETAIL C
(SEE NOTE 7)

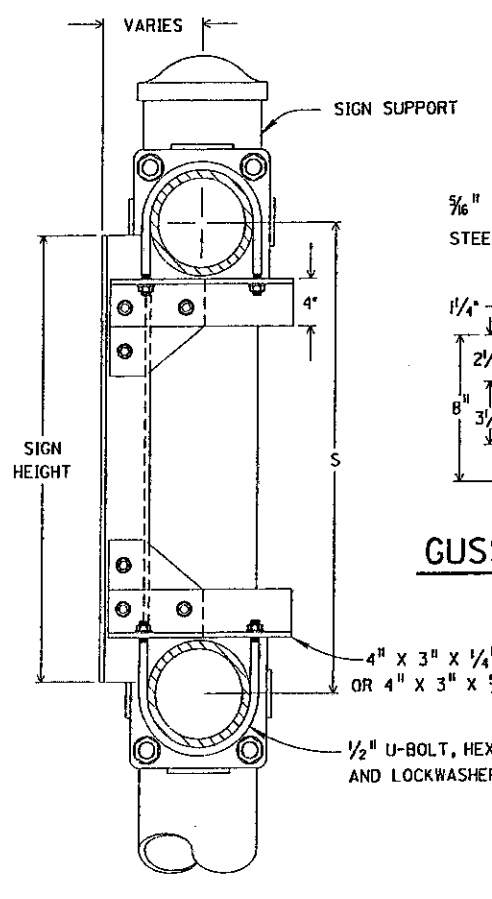
SUPPORT TYPE	ATTACHMENT POINT SPACING		SIGN BRACKET			
	DESIGN	S	L (feet)	NUMBER OF BRACKETS	BRACKET SPACING (inches)	
7.2	1	2'-4"	4	6	36	6
	2	3'	5	6	48	6
	3	4'	6	6	60	6
7.3	1 & 2	3'	7	6	72	6
	3 & 4	4'	8	10 3/8	75 3/8	10 1/4
7.4	1	3'	9	16 3/8	75 3/8	16 1/4
7.5	2 & 3	4'	10	10 3/8	99 3/8	10 1/4
7.6	4	5'	11	16 3/8	99 3/8	16 1/4
7.65	6 & 6 ALT.	3'	12	6	66	66
	8 & 8 ALT.	5'	13	6	72	72
9.12	SINGLE ARM		14	8 3/8	75 3/8	75 3/8
9.24	1 THRU 4	4'	15	14 3/8	75 3/8	14 3/8
	1 THRU 5	4'	16	8 3/8	75 3/8	99 3/8
10.48	6 THRU 8	6'	17	14 3/8	75 3/8	99 3/8
11.08	SINGLE ARM		18	8 3/8	99 3/8	99 3/8
12.24	1 THRU 4	4'	19	14 3/8	99 3/8	99 3/8
	5 THRU 8	6'	20	7	75 3/8	75 3/8
12.30	1 THRU 4 ALT.	4'	21	13	75 3/8	75 3/8
	5 THRU 12 ALT.	6'	22	7	75 3/8	75 3/8
15.8	ALL	3'	23	13	75 3/8	75 3/8
15.115	ALL	5'	24	7	75 3/8	99 3/8
16.10	SINGLE ARM		25	13	75 3/8	99 3/8
			26	7	99 3/8	99 3/8
			27	13	99 3/8	99 3/8



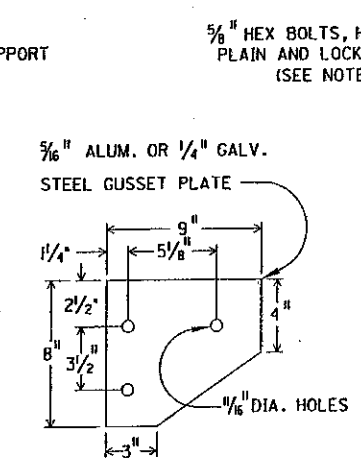
DOUBLE CHORDS

SINGLE ARM

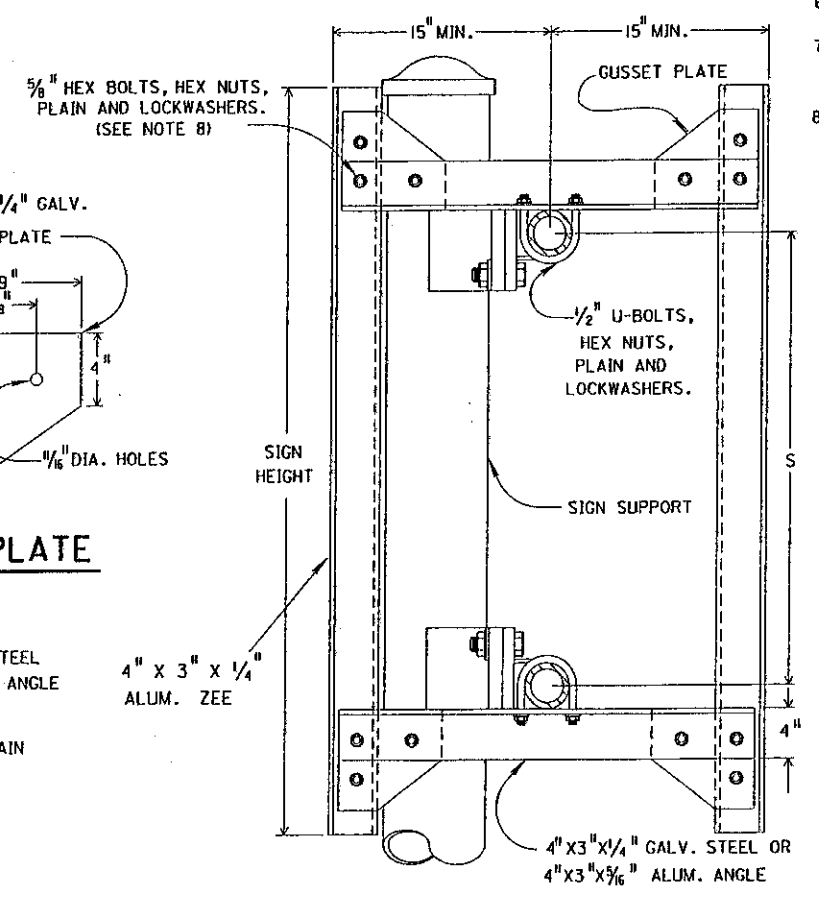
ALTERNATE CLAMP



TYPE A
(SEE NOTE 5)



GUSSET PLATE



TYPE B
(SEE NOTE 6)

NOTES

- SIGN BRACKETS SHALL BE A 4" X 3" X 1/4" ALUMINUM ZEE AT 2.85 POUNDS PER FOOT.
- INTERMEDIATE SIGN BRACKETS SHALL BE PROVIDED IF THE SIGN EXTENDS MORE THAN FOUR (4) FEET ABOVE OR BELOW AN ATTACHMENT POINT.
- U-BOLTS, OTHER BOLTS, NUTS AND WASHERS SHALL BE STAINLESS STEEL FOR USE WITH ALUMINUM CHORDS. WHEN USED WITH GALVANIZED SIGN STRUCTURES THE U-BOLTS ONLY MAY BE GALVANIZED STEEL.
- CONTACT BETWEEN ALUMINUM AND GALVANIZED PARTS SHALL BE PREVENTED WITH A MINIMUM 1/16" THICK CHLOROPRENE GASKET OR APPROVED EQUAL.
- TYPE A SHALL BE FOR SUPPORTS WHERE THE SIGN HEIGHT IS LESS THAN ONE (1) FOOT GREATER THAN THE ATTACHMENT POINT SPACING.
- TYPE B SHALL BE FOR BACK TO BACK MOUNTED SIGNS.
- DETAIL C - FIXTURE SUPPORT ARM MOUNTING FOR MERCURY VAPOR LIGHTED SIGNS COMPLYING WITH TC-31.21.
- GUSSET PLATES MAY BE ATTACHED BY BOLTING OR WELDING.

BUREAU OF DESIGN SERVICES
DIVISION OF HIGHWAYS
OHIO DEPARTMENT OF TRANSPORTATION

TRAFFIC CONTROL	DATE
SIGN ATTACHMENT ASSEMBLIES	08/19/77 03/01/79 09/01/92
STANDARD CONSTRUCTION DRAWING	TC-22.20
APPROVED <i>Ray A. Cragg</i> ENGR. OF DESIGN SERVICES	