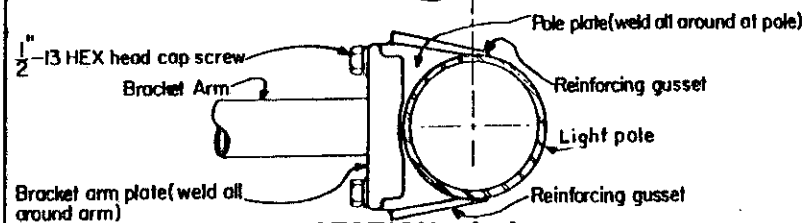
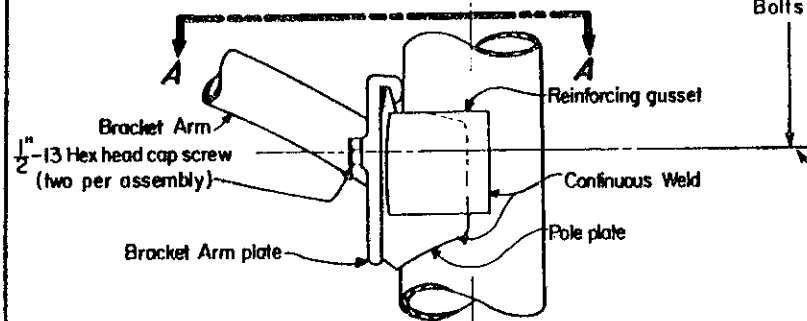
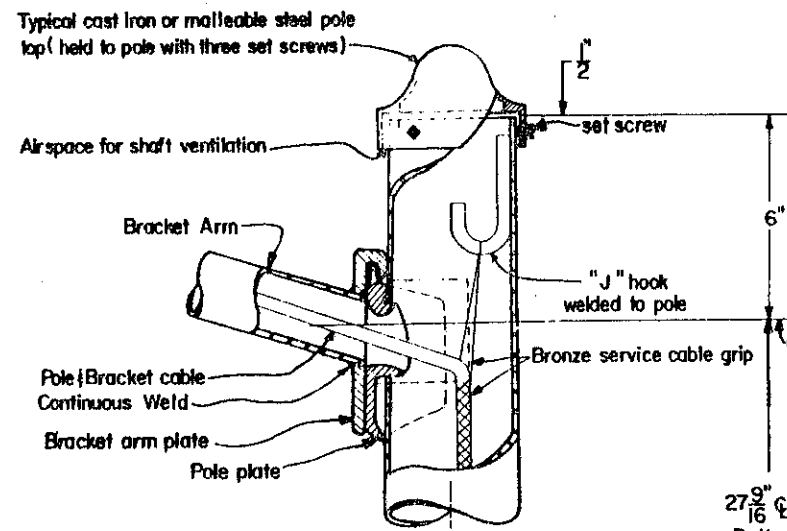


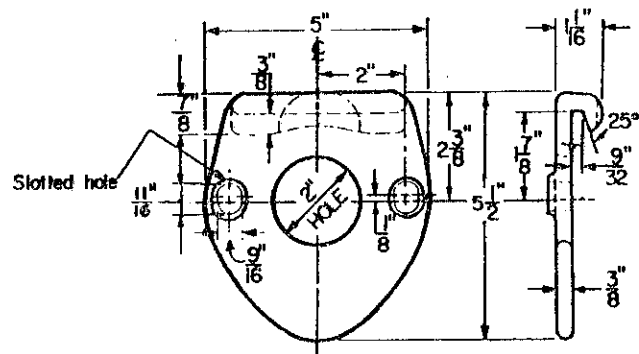
LIGHT POLE DETAILS

NOTES

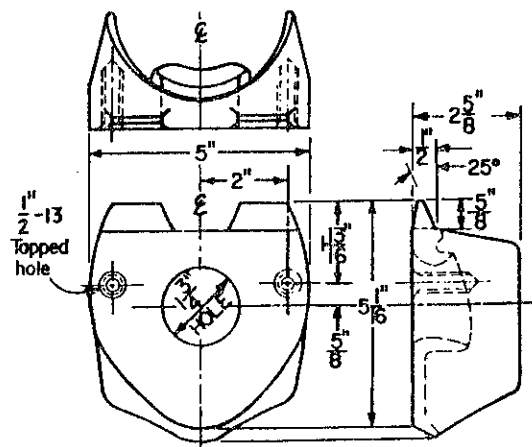
1. Handholes are not required on poles with transformer bases.
2. Handholes shall be opposite the roadway unless such location renders them inaccessible. (See NOTE 6)
3. Use of Reinforcing gussets is optional.
4. Circuit and light pole numbers shall be as scheduled on light plan sheets. Labels shall meet the requirements of 713.18 and shall contain 3" series "B" letters and numbers as per the "Standard Alphabets for Highway Signs" published by the Federal Highway Administration.
5. Handholes for bridge poles shall be on roadway side and 17" from center of handhole to bottom of base.
6. All light poles mounted on raised concrete median barriers shall be equipped with handholes. Handholes shall be located beneath the bracket arm extending over the Northbound or Westbound traffic lanes.
7. Details shown hereon are essentially for galvanized steel pole designs meeting T13.01 requirements. For aluminum designs, or other permitted steel material designs, variations from these details will be acceptable, as approved by the Engineer.
8. Circuit identification details are applicable to all pole designs.
9. See HL-60.11 For details of termination for ground cable.



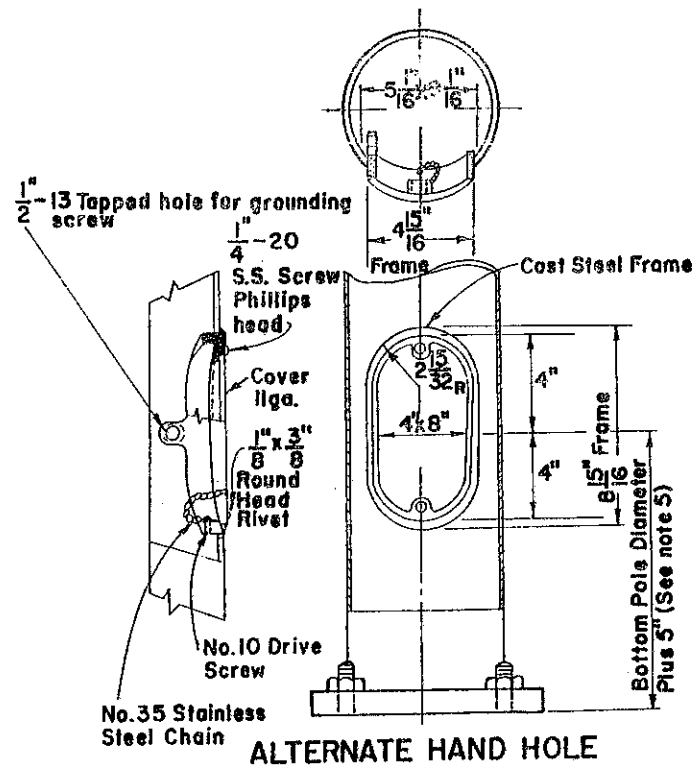
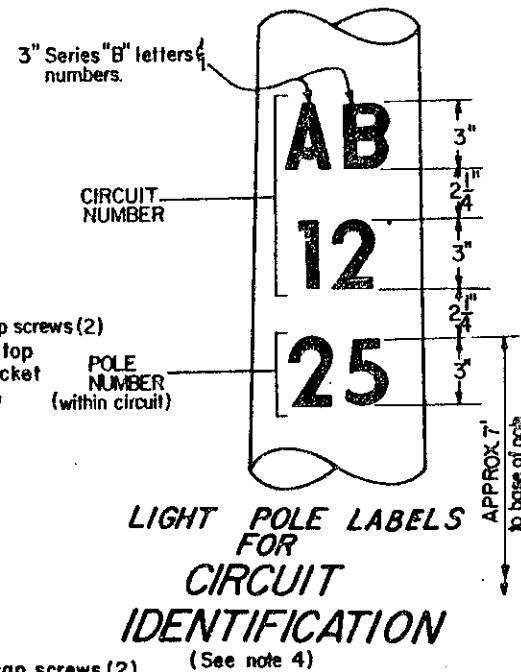
**SECTION A-A
POLE TOP and BRACKET ARM
ASSEMBLIES**



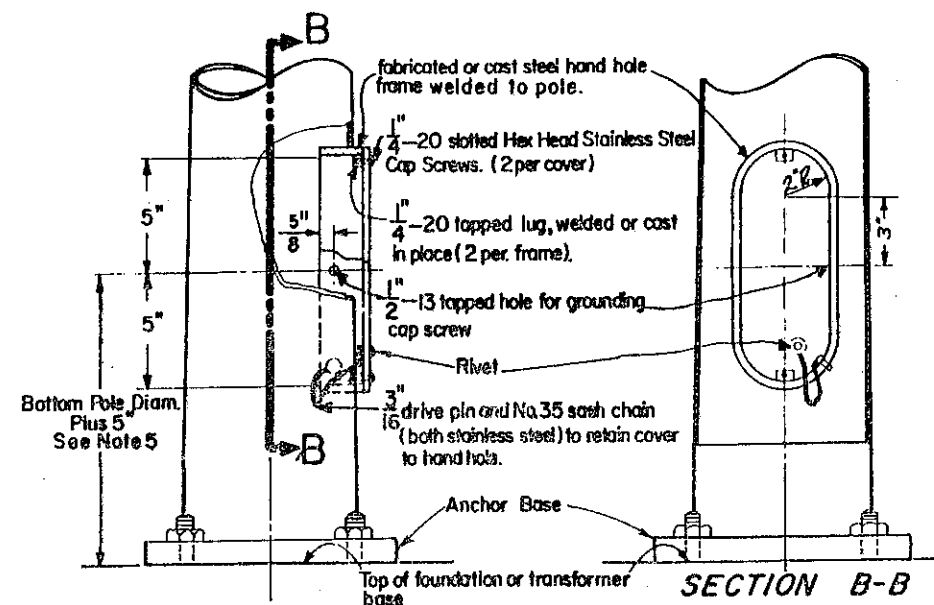
**BRACKET ARM PLATE
(CAST STEEL)**



**POLE PLATE
(CAST STEEL)**



ALTERNATE HAND HOLE



**HAND HOLE WITH COVER
See Notes 1 & 2**

BUREAU OF DESIGN SERVICES DIVISION OF HIGHWAYS OHIO DEPARTMENT OF TRANSPORTATION	
HIGHWAY LIGHTING	DATE 5-1-87
LIGHT POLE DETAILS	
STANDARD CONSTRUCTION DRAWING HL-10.12	
APPROVED _____ Engineer of Design Services	