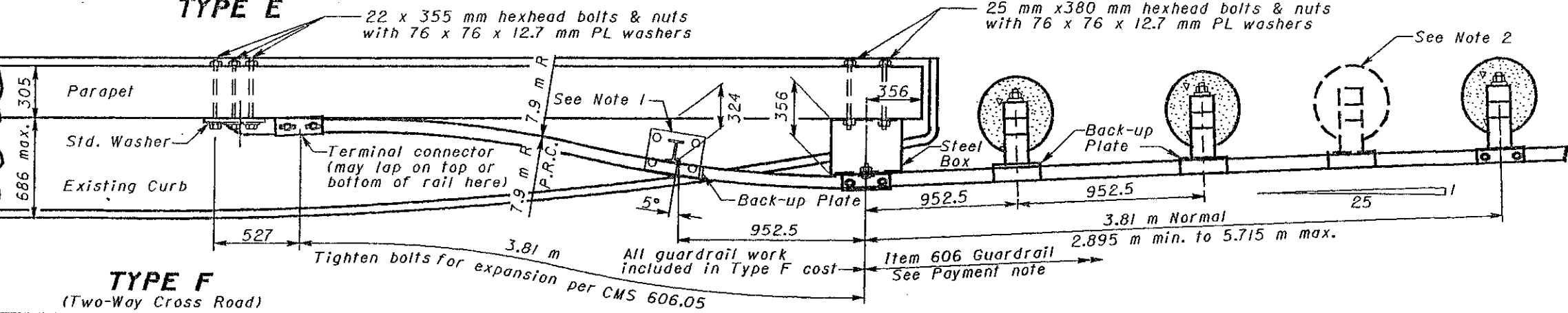
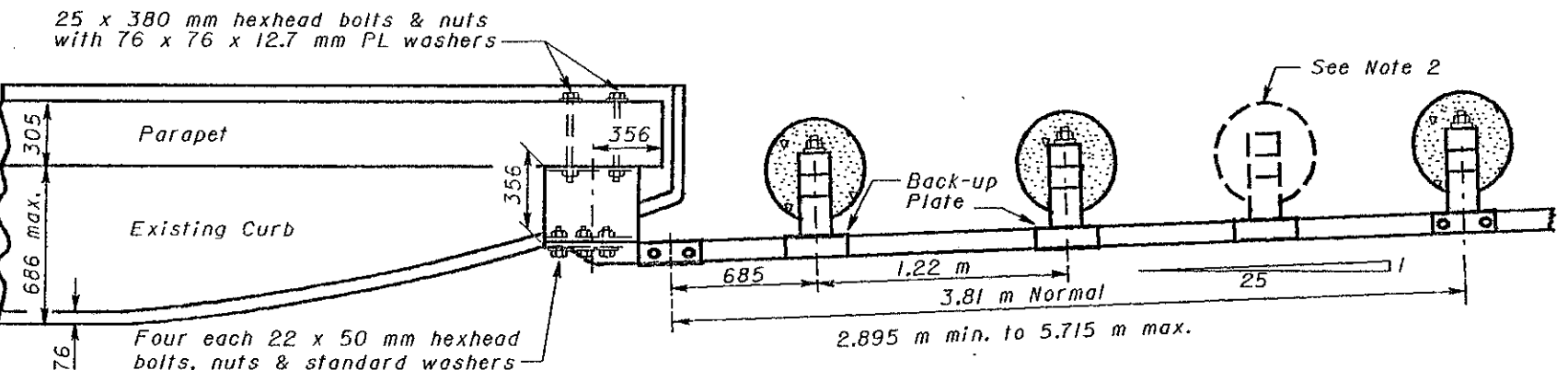
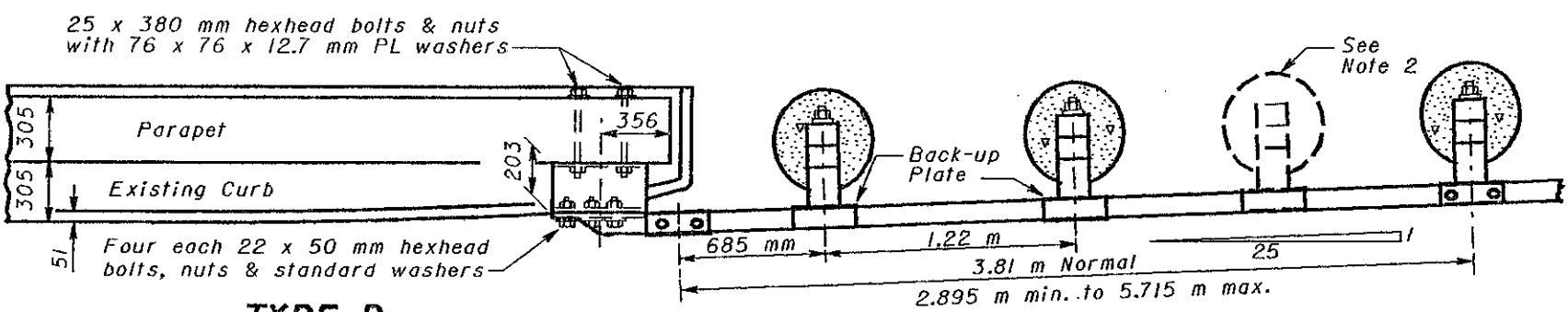
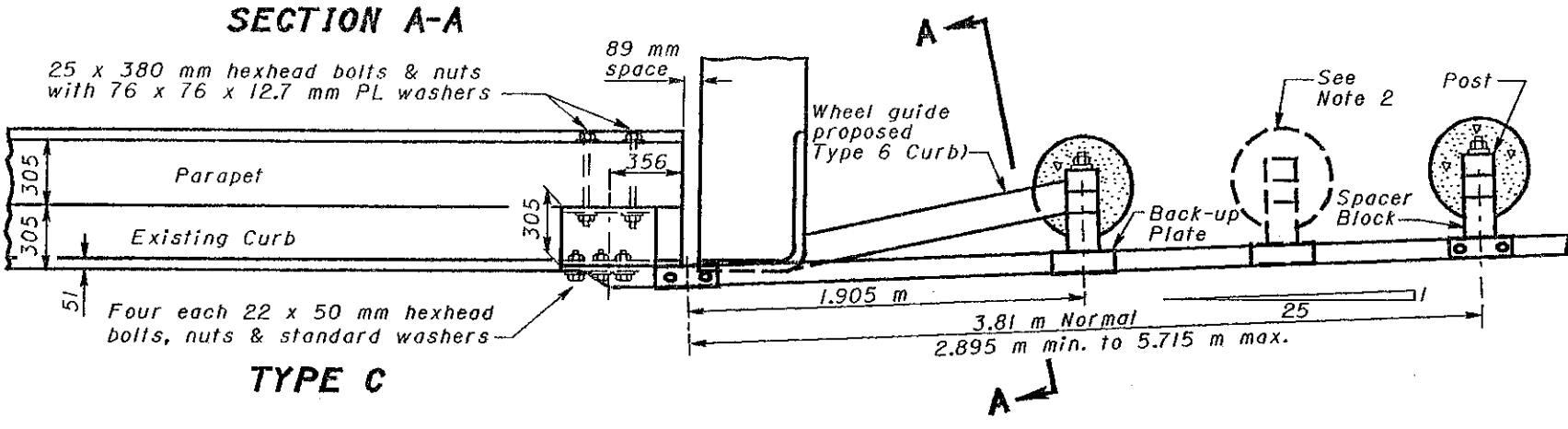


All dimensions are in millimeters unless otherwise noted.



NOTES

PAYMENT: Payment for Item 606, Each, Bridge Terminal Assembly, Type _____, shall include the additional cost in excess of normal guardrail cost, such as: additional or heavier posts, concrete encasement, extra rail, steel box, curb, embankment, terminal connector, anchors and other hardware, etc.

POSTS: Shall be 150x200 mm wood or W150 x22.5 steel (except Note 1 post) of the same material type as used on approach guardrail, with 100 mm min. concrete encasement.

DETAILS NOT SHOWN: See SCD's GR-1.1M, GR-1.2M, and GR-1.3M and other Drawings pertaining to the design of specific guardrail Type.

NOTE 1: Use W150x13.5 inlet mounted post as detailed on SCD GR-1.2M with length to mount rail top 706 mm above bridge deck.

NOTE 2: Place one additional encased post halfway between adjacent posts when the 3.81 m normal rail section is increased.

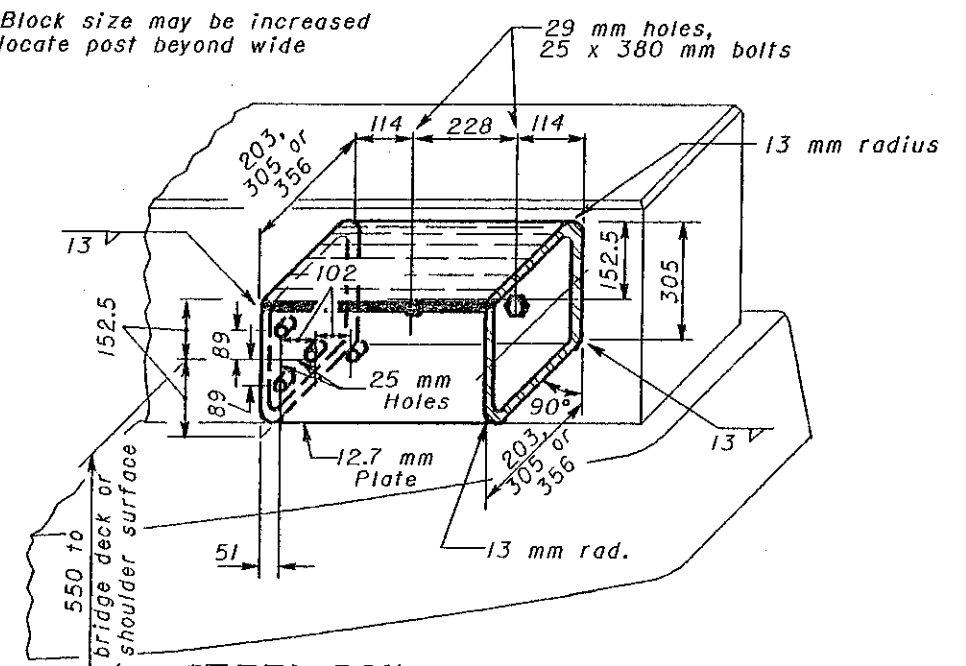
GUARDRAIL TERMINATION: As directed by the Engineer. The 3.81 m normal rail section may vary as shown to facilitate connection of or reconstruction of existing approach guardrail. The 356 mm terminal connector location dimension may be increased to avoid existing parapet steel.

SELF-DRILLING ANCHORS: Meeting requirements of CMS 712.01, or Group VIII Type 1 anchors per FF-S-325, with 22 x 38 mm bolts with washers may be substituted for the 22 x 355 mm bolt shown in the parapet for Type F.

STEEL BOX: Appropriate size steel box, galvanized after welding any two opposite corners, shall be mounted on the parapet so the rail is 706 mm above the bridge deck.

Anchor installations not satisfactory to the Engineer shall be replaced with bolts as shown extending through the parapet or as directed by the Engineer.

SPACER BLOCK: Block size may be increased if necessary to locate post beyond wide approach slab.



STEEL BOX DETAIL



This Drawing Replaces GR-3A.

OHIO DEPARTMENT OF TRANSPORTATION	
BRIDGE TERMINAL ASSEMBLIES	DATE 11-30-94 10-21-97
STANDARD CONSTRUCTION DRAWING GR-3.6M	APPROVED <i>Roy T. Latheland</i>