

STA. 122+00 MATCH LINE

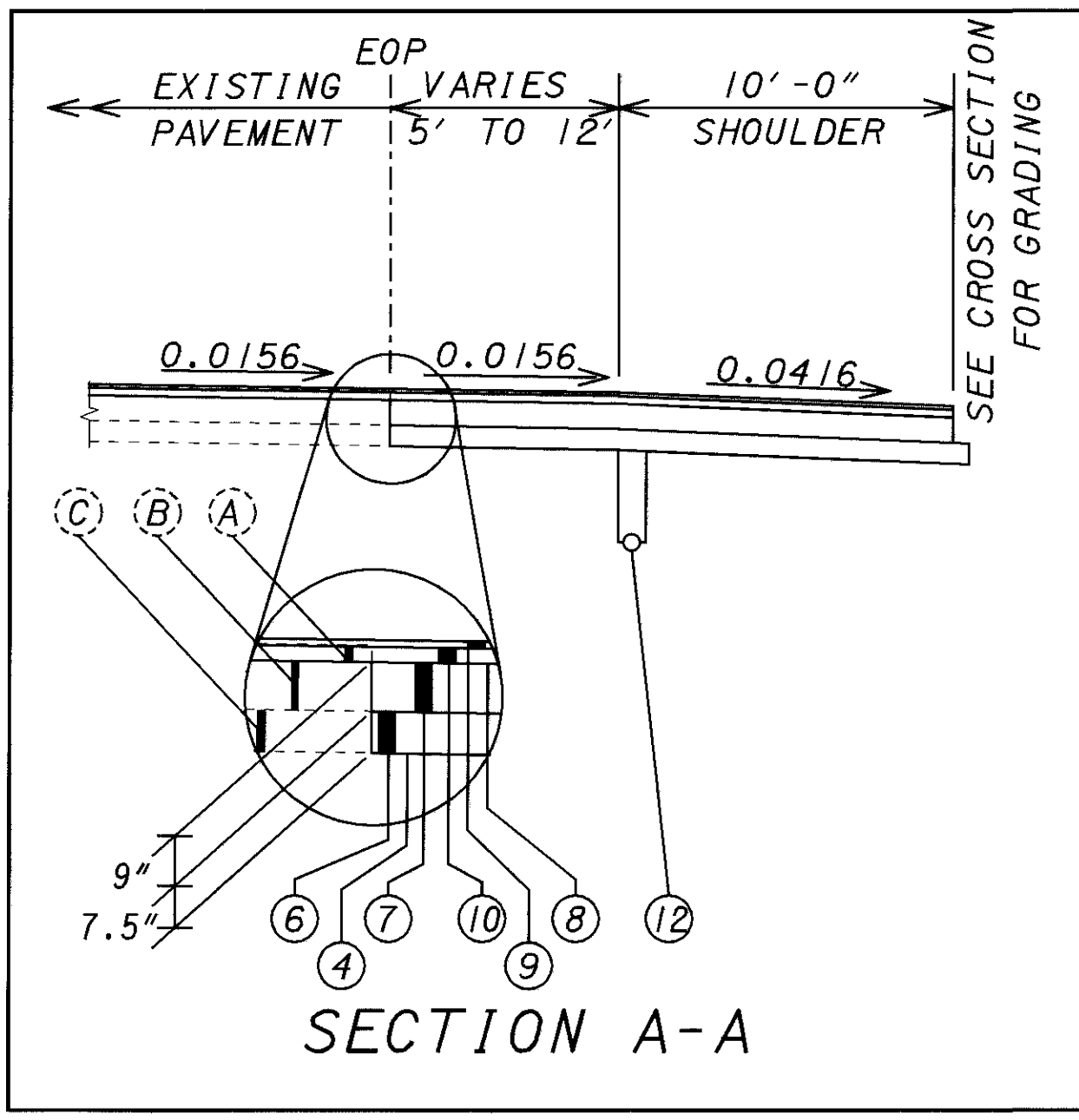
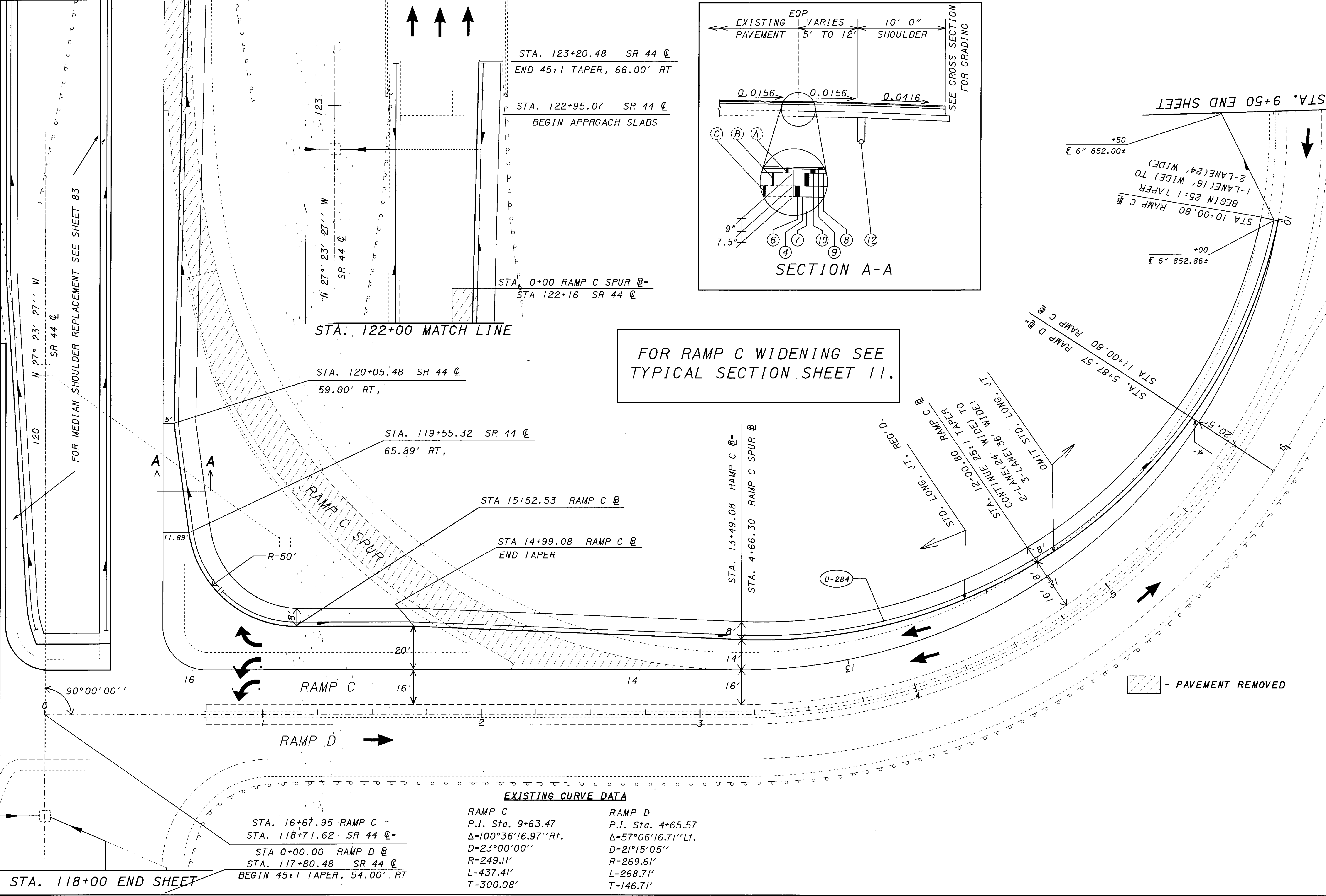
STA. 123+50 END SHEET

PLOT SUBMITTED: 10-FEB-1999 13:31

09866gah.dgn

09866gah.dgn

PLOTTED BY: jgrmvsse
PLOTTED FROM: I:\PROJECTS\pid09866\09866gah.dgn



FOR RAMP C WIDENING SEE
TYPICAL SECTION SHEET 11.

STA. 123+20.48 SR 44 $\text{\textcircled{C}}$
END 45:1 TAPER, 66.00' RT

STA. 122+95.07 SR 44 $\text{\textcircled{C}}$
BEGIN APPROACH SLABS

STA. 0+00 RAMP C SPUR $\text{\textcircled{B}}$
STA 122+16 SR 44 $\text{\textcircled{C}}$

N 27° 23' 27" W
SR 44 $\text{\textcircled{C}}$

STA. 120+05.48 SR 44 $\text{\textcircled{C}}$
59.00' RT,

STA. 119+55.32 SR 44 $\text{\textcircled{C}}$
65.89' RT,

STA 15+52.53 RAMP C $\text{\textcircled{B}}$

STA 14+99.08 RAMP C $\text{\textcircled{B}}$
END TAPER

STA. 13+49.08 RAMP C $\text{\textcircled{B}}$
STA. 4+66.30 RAMP C SPUR $\text{\textcircled{B}}$

STD. LONG. JT. REQ. D.
STA. 12+00.80 RAMP C $\text{\textcircled{B}}$
CONTINUE 25:1 TAPER TO
3-LANE (24' WIDE) TO
OMIT STD. LONG. JT.

STA. 5+87.57 RAMP D $\text{\textcircled{B}}$
STA. 1+00.80 RAMP C $\text{\textcircled{B}}$

- PAVEMENT REMOVED

EXISTING CURVE DATA

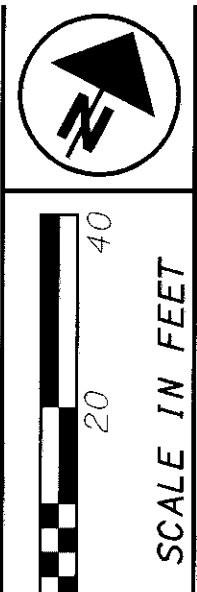
STA. 16+67.95 RAMP C =
STA. 118+71.62 SR 44 $\text{\textcircled{C}}$
STA 0+00.00 RAMP D $\text{\textcircled{B}}$
STA. 117+80.48 SR 44 $\text{\textcircled{C}}$
BEGIN 45:1 TAPER, 54.00' RT

RAMP C
P.I. Sta. 9+63.47
 $\Delta=100^{\circ}36'16.97''$ Rt.
D=23°00'00"
R=249.11'
L=437.41'
T=300.08'

RAMP D
P.I. Sta. 4+65.57
 $\Delta=57^{\circ}06'16.71''$ Lt.
D=21°15'05"
R=269.61'
L=268.71'
T=146.71'

STA. 118+00 END SHEET

STA. 9+50 END SHEET



CALCULATED XXX
CHECKED XXX

PAVEMENT DETAIL SHEET
SR-44 & I-90 INTERCHANGE - RAMP C-D

LAK-44-0.01