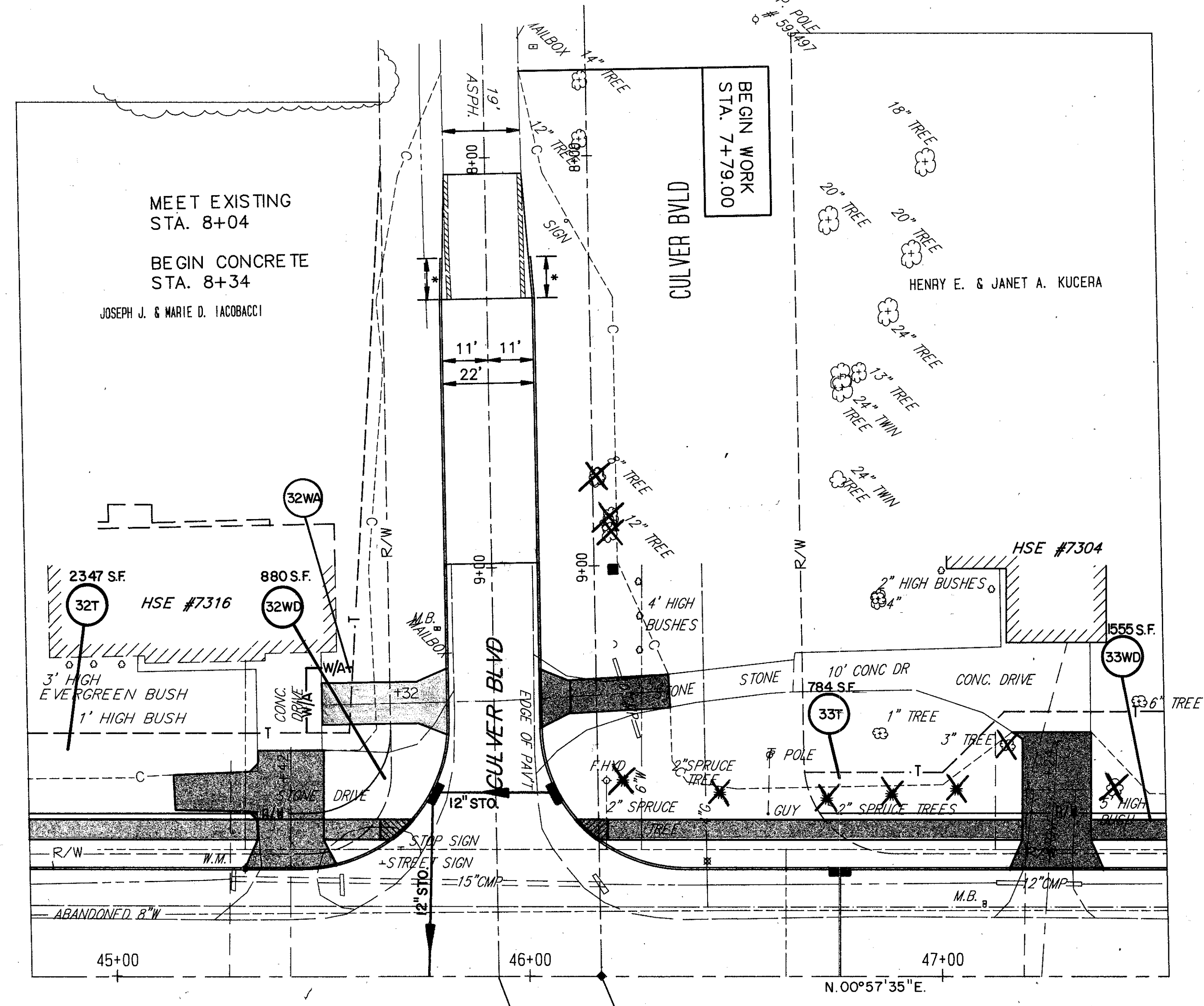


STATE ROUTE 306

ℰ = ℰ STA. 46+17.34 = STA. 10+00.00
 ℰ = ℰ STA. 45+92.50 = STA. 10+00.00

SEE SHEET NO. 27 & 28 FOR MAINLINE



STATE ROUTE 306

ℰ = ℰ STA. 46+17.34 = STA. 10+00.00
 ℰ = ℰ STA. 45+92.50 = STA. 10+00.00

	5-25-90	REVISED PARCEL 33
	8-15-90	ADDED DRIVE AND PARCEL 32 W/A
REV.	DATE	COMPLETION DATE:

4-27-90

LAK-306-7.12