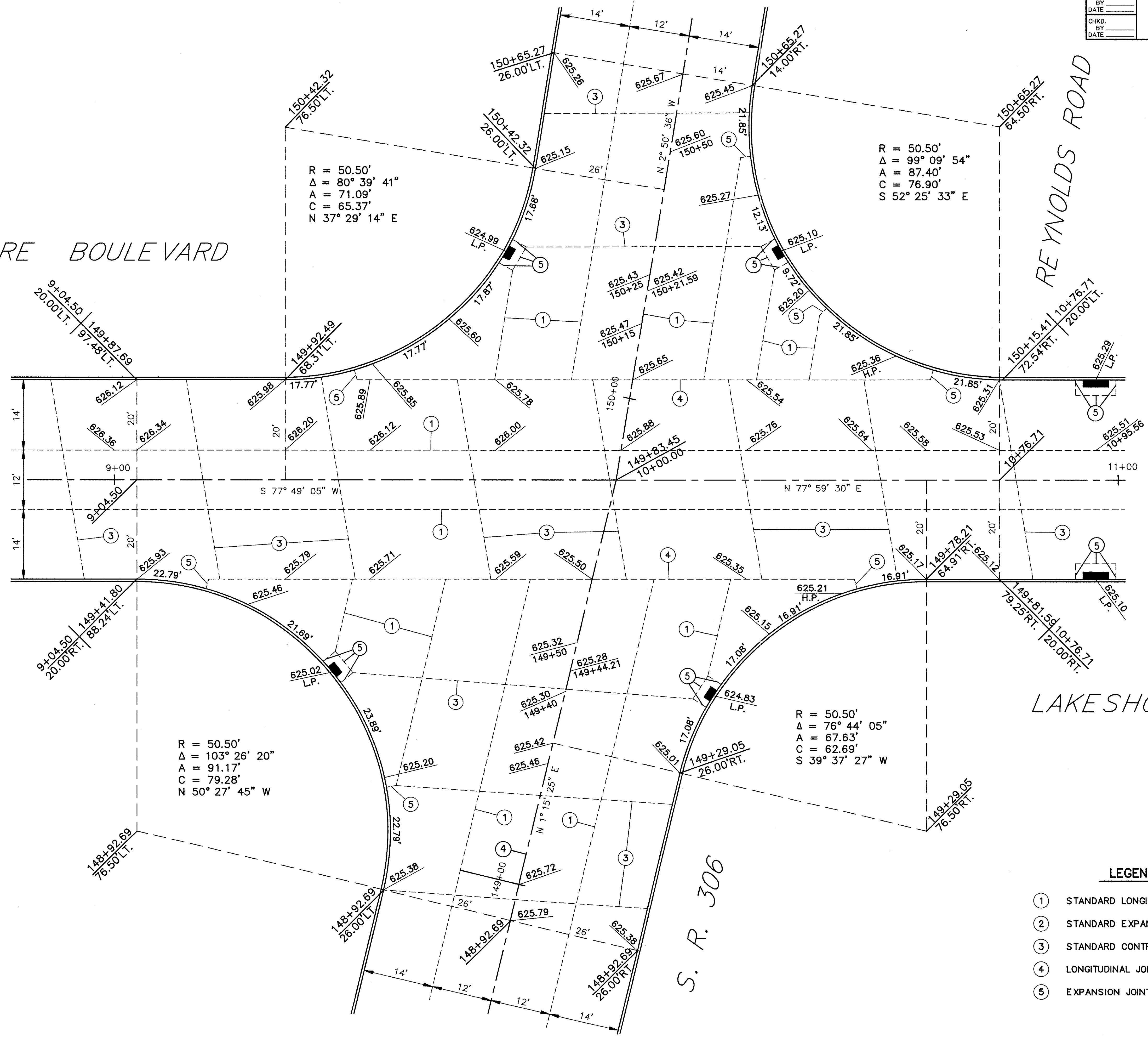
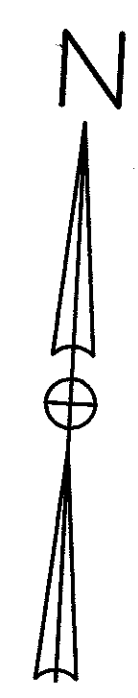


LAKE SHORE BOULEVARD

REYNOLDS ROAD

LAKE SHORE BOULEVARD

S. R. 306



R = 50.50'
 Δ = 80° 39' 41"
 A = 71.09'
 C = 65.37'
 N 37° 29' 14" E

R = 50.50'
 Δ = 99° 09' 54"
 A = 87.40'
 C = 76.90'
 S 52° 25' 33" E

R = 50.50'
 Δ = 103° 26' 20"
 A = 91.17'
 C = 79.28'
 N 50° 27' 45" W

R = 50.50'
 Δ = 76° 44' 05"
 A = 67.63'
 C = 62.69'
 S 39° 37' 27" W

LEGEND

- ① STANDARD LONGITUDINAL JOINT
- ② STANDARD EXPANSION JOINT
- ③ STANDARD CONTRACTION JOINT
- ④ LONGITUDINAL JOINT WITHOUT TIEBARS
- ⑤ EXPANSION JOINT WITHOUT DOWELS