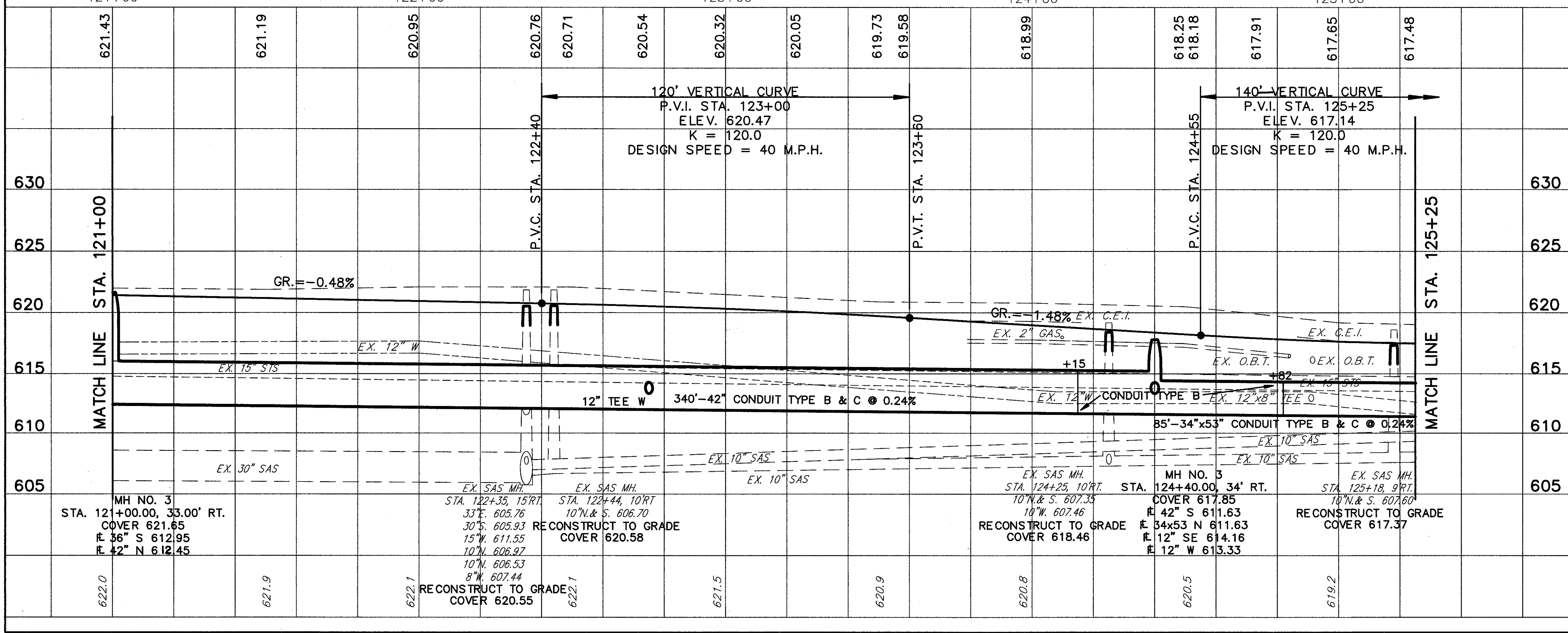
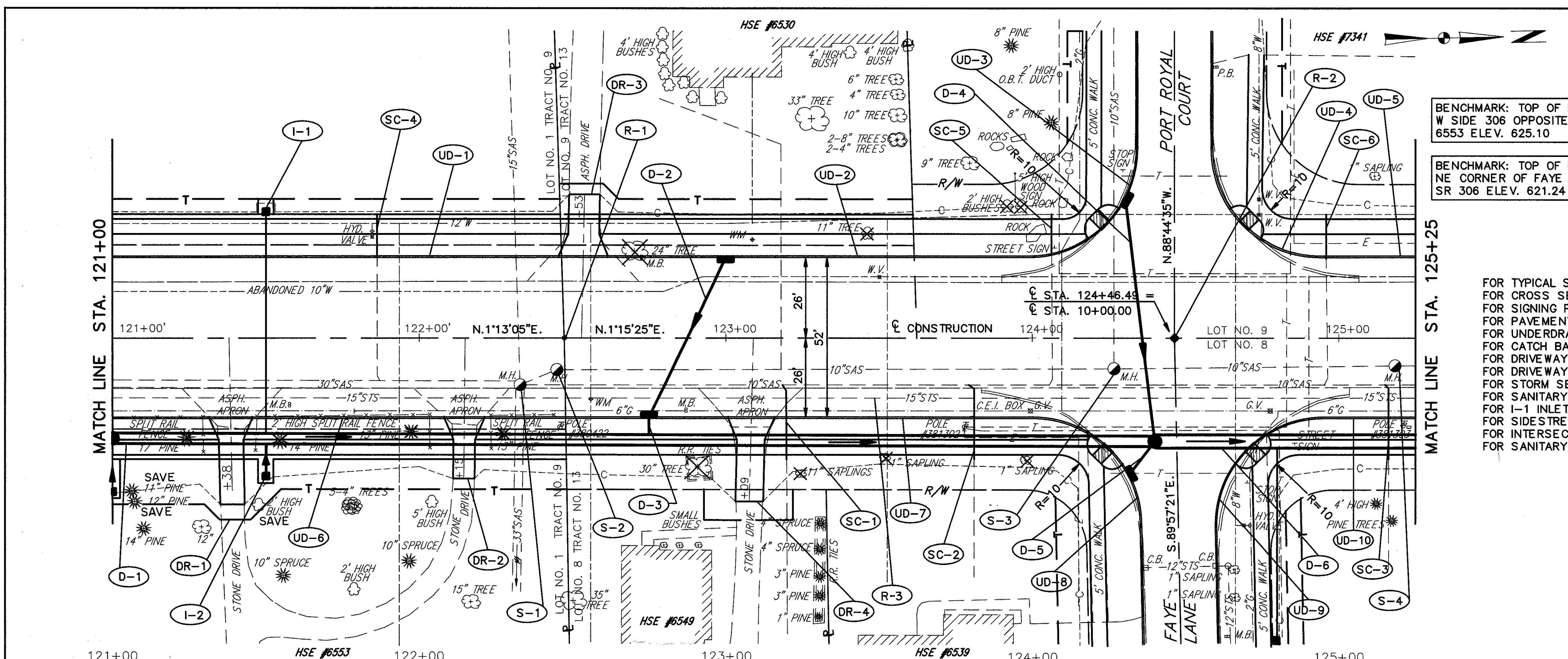


BENCHMARK: TOP OF HYDRANT W SIDE 306 OPPOSITE H.N. 6553 ELEV. 625.10  
 BENCHMARK: TOP OF HYDRANT NE CORNER OF FAYE LN. & SR 306 ELEV. 621.24

FOR TYPICAL SECTIONS SEE SHEET 6  
 FOR CROSS SECTIONS SEE SHEET 202-204  
 FOR SIGNING PLAN SEE SHEET 363-365  
 FOR PAVEMENT DETAILS SEE SHEET 352-353  
 FOR UNDERDRAIN MARKING SEE SHEET 52-55  
 FOR CATCH BASIN DETAILS SEE SHEET 323  
 FOR DRIVEWAY DETAILS SEE SHEET 333-334  
 FOR DRIVEWAY PROFILES SEE SHEET 286-287  
 FOR STORM SEWER CONNECTION SCHEDULE SEE SHEET 68-70  
 FOR SANITARY SEWER CONNECTION SCHEDULE SEE SHEET 71-73  
 FOR I-1 INLET QUANTITIES SEE SHEET 82  
 FOR SIDE STREET PLAN & PROFILE SEE SHEET 139-140  
 FOR INTERSECTION DETAILS SEE SHEET 311  
 FOR SANITARY SEWER DETAILS SEE SHEET 329-331

| ROADWAY |   |      |     |
|---------|---|------|-----|
| REF.    | LOCATION                                  | EACH | LF. |
| R-1     | STA. 122+47.41 C                          | 1    |     |
| R-2     | STA. 124+46.49 C                          | 1    |     |
| R-3     | STA. 121+00.00 TO STA. 125+25.00, 20' RT. |      | 425 |
| TOTALS  |   | 2    | 425 |

| 604               | 202                        |
|-------------------|----------------------------|
| MONUMENT ASSEMBLY | PIPE REMOVED (24' & UNDER) |



| REF.              | LOCATION   | EA. | LF. |
|-------------------|--|-----|-----|
| TEE               | 42" x 12" x 42"                                      | 1   | 1   |
| MANHOLE           | RECONSTRUCTED TO GRADE AS PER PLAN                   | 1   | 4   |
| CATCH BASIN       | NO. 3A, AS PER PLAN                                  | 1   | 4   |
| MANHOLE           | NO. 3  | 1   | 4   |
| 34" x 53" CONDUIT | TYPE C, 706.04 CLASS HE II WITH JOINTS AS PER 706.11 | 43  | 43  |
| 34" x 53" CONDUIT | TYPE B, 706.04 CLASS HE II WITH JOINTS AS PER 706.11 | 42  | 42  |
| 42" CONDUIT       | TYPE C, 706.02 WITH JOINTS AS PER 706.11             | 315 | 315 |
| 42" CONDUIT       | TYPE B, 706.02 WITH JOINTS AS PER 706.11             | 25  | 25  |
| 12" CONDUIT       | TYPE C, 706.02 WITH JOINTS AS PER 706.11             | 4   | 4   |
| 12" CONDUIT       | TYPE B, 706.02 WITH JOINTS AS PER 706.11             | 14  | 14  |
| TOTALS            |  | 151 | 425 |

PLAN & PROFILE STA. 121+00 TO STA. 125+25